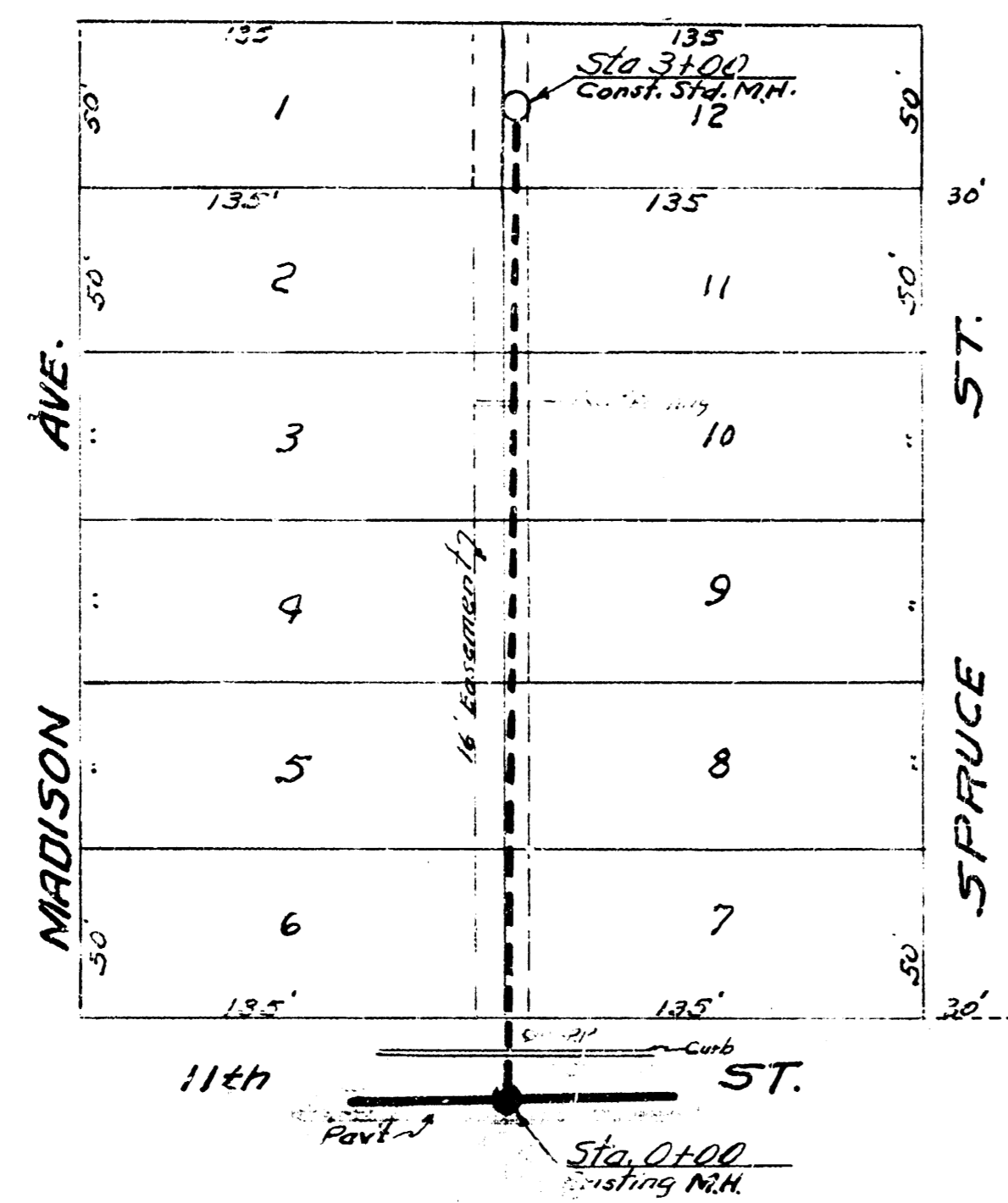
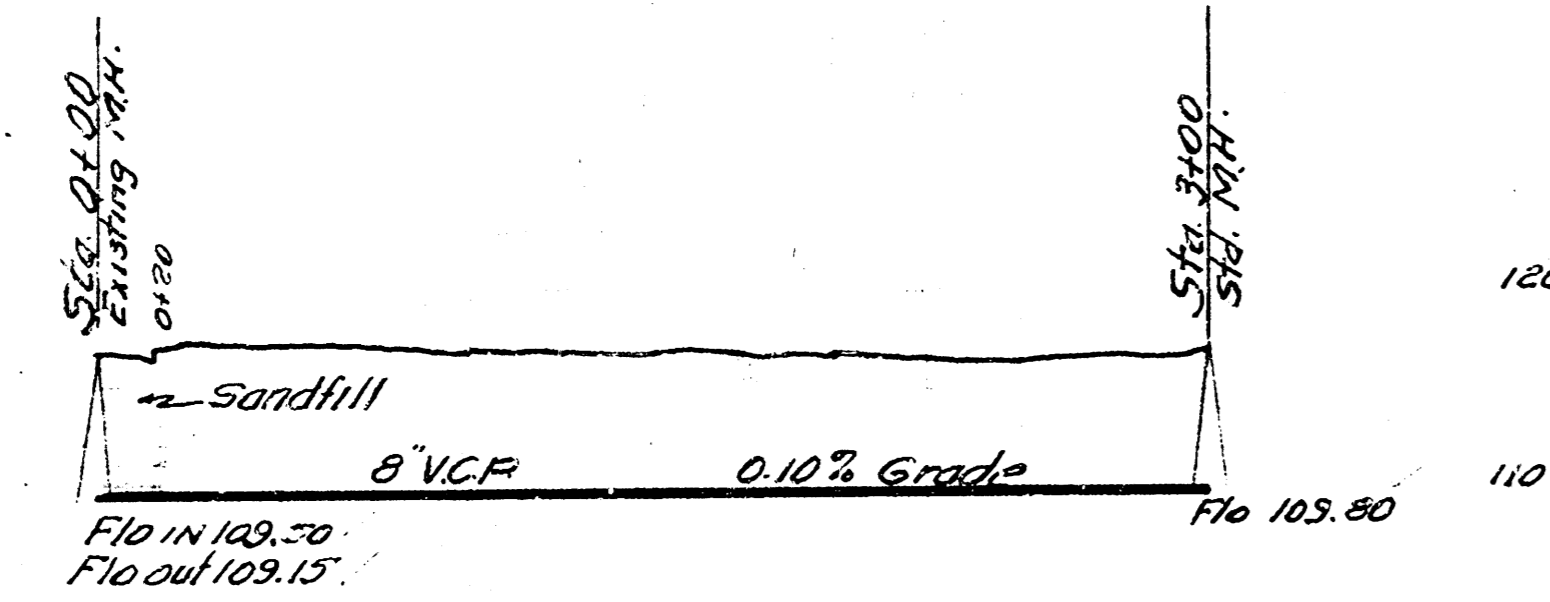


GENTRY 3rd ADD.

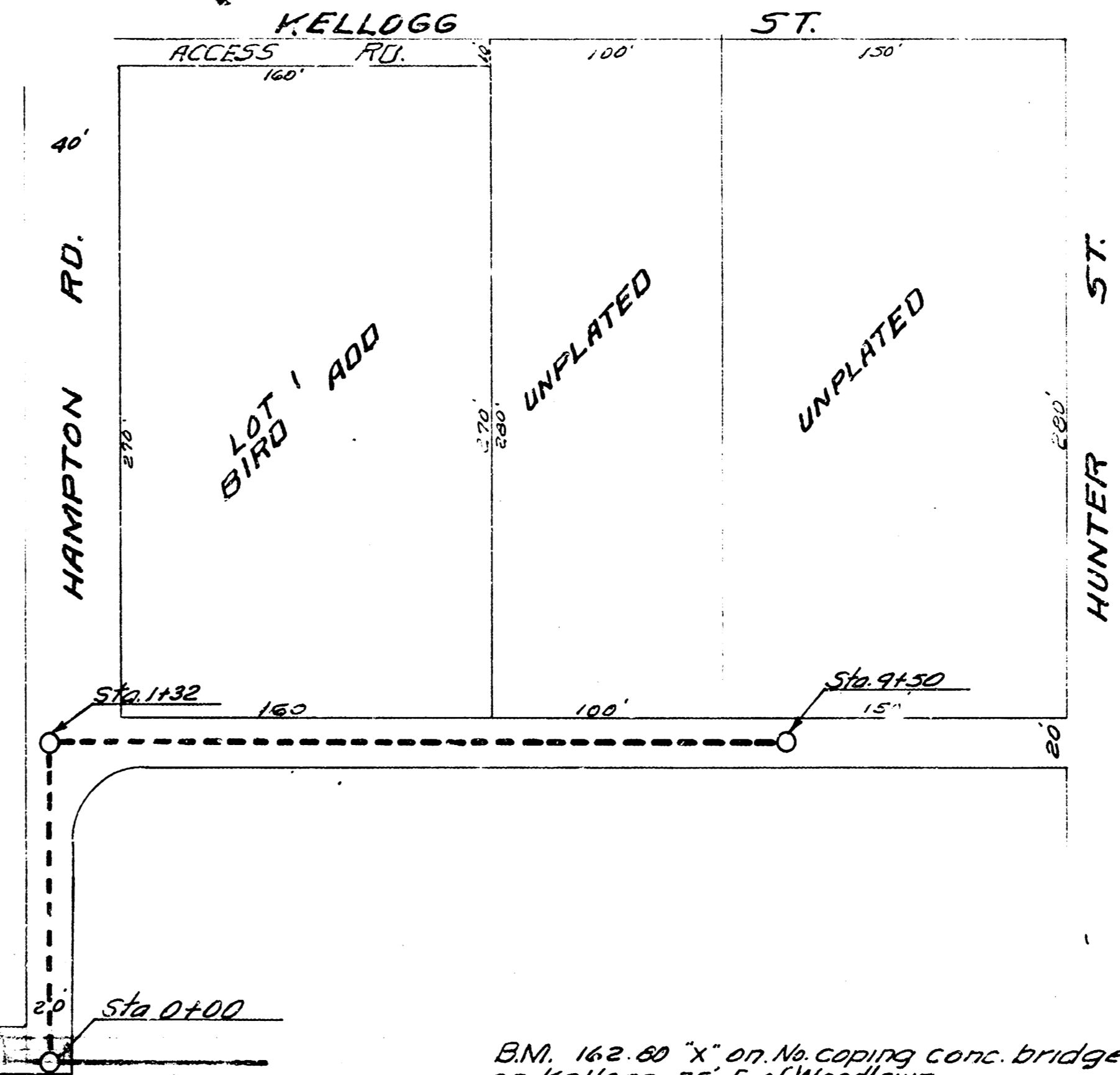


B.M. 117.09' 6" in Globe S.L. 11th W. c.b. Spruce

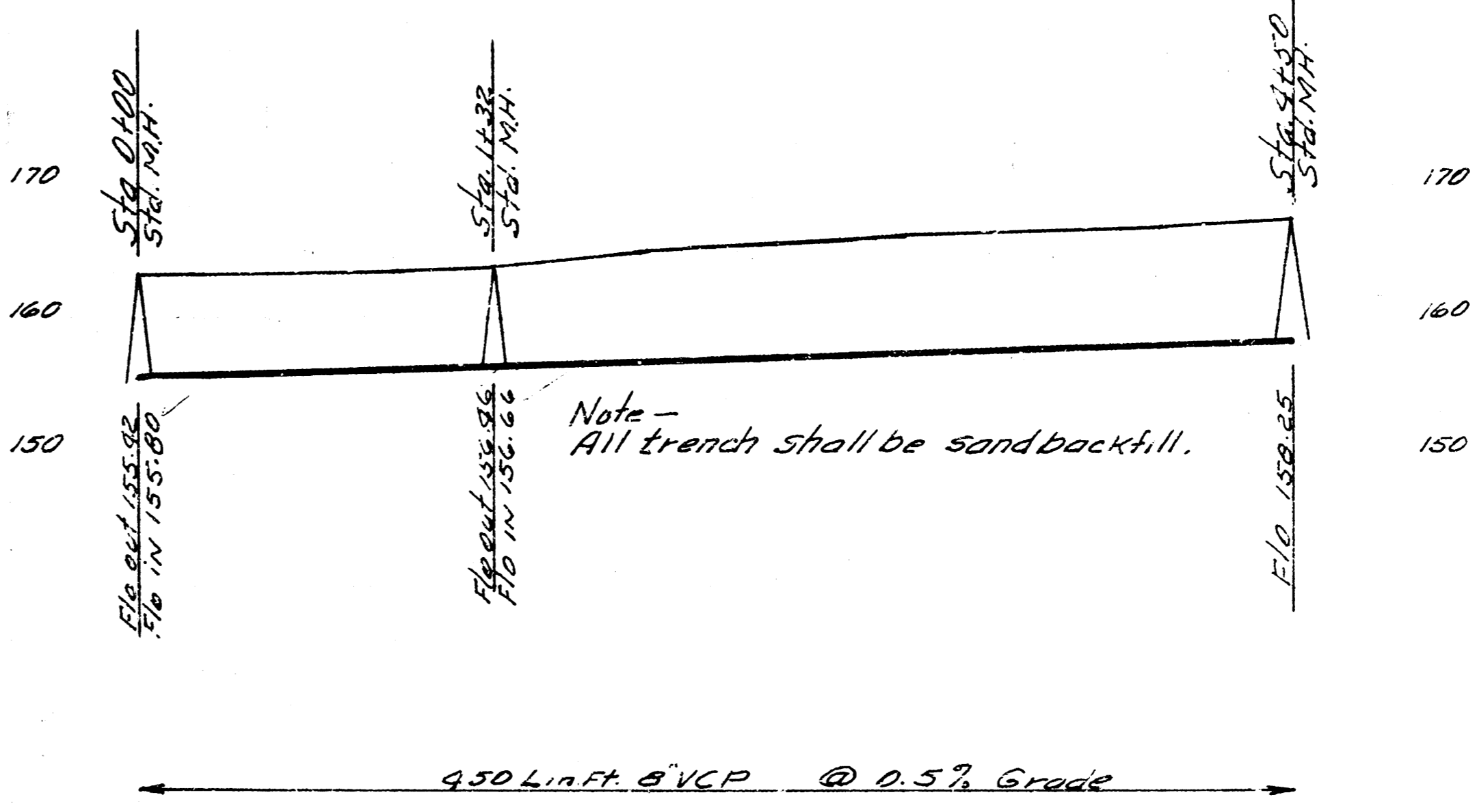


11-19  
 11-19-77  
 11-19-77  
 11-19-77

LAT. 26 DIST. E. S. 12  
 CITY OF WICHITA KANSAS  
 BE SMITH CITY ENGINEER  
 Proj No. C-24-77



B.M. 162.80' "X" on No. coping conc. bridge on Kellogg 75' E. of Woodlawn



11-19  
 11-19-77  
 11-19-77  
 11-19-77

LAT. 15 SUBMAIN J WIS.  
 CITY OF WICHITA KANSAS  
 BE SMITH CITY ENGINEER  
 Proj No. C-24-81