

# SANITARY SEWER IMPROVEMENTS SHADYBROOK COMMERCIAL ADDITION

## LATERAL 30, DISTRICT E, S.S. #12

Proj. No: 468-76-245-82284-000-000-001

Index Code: 741454

### GENERAL NOTES

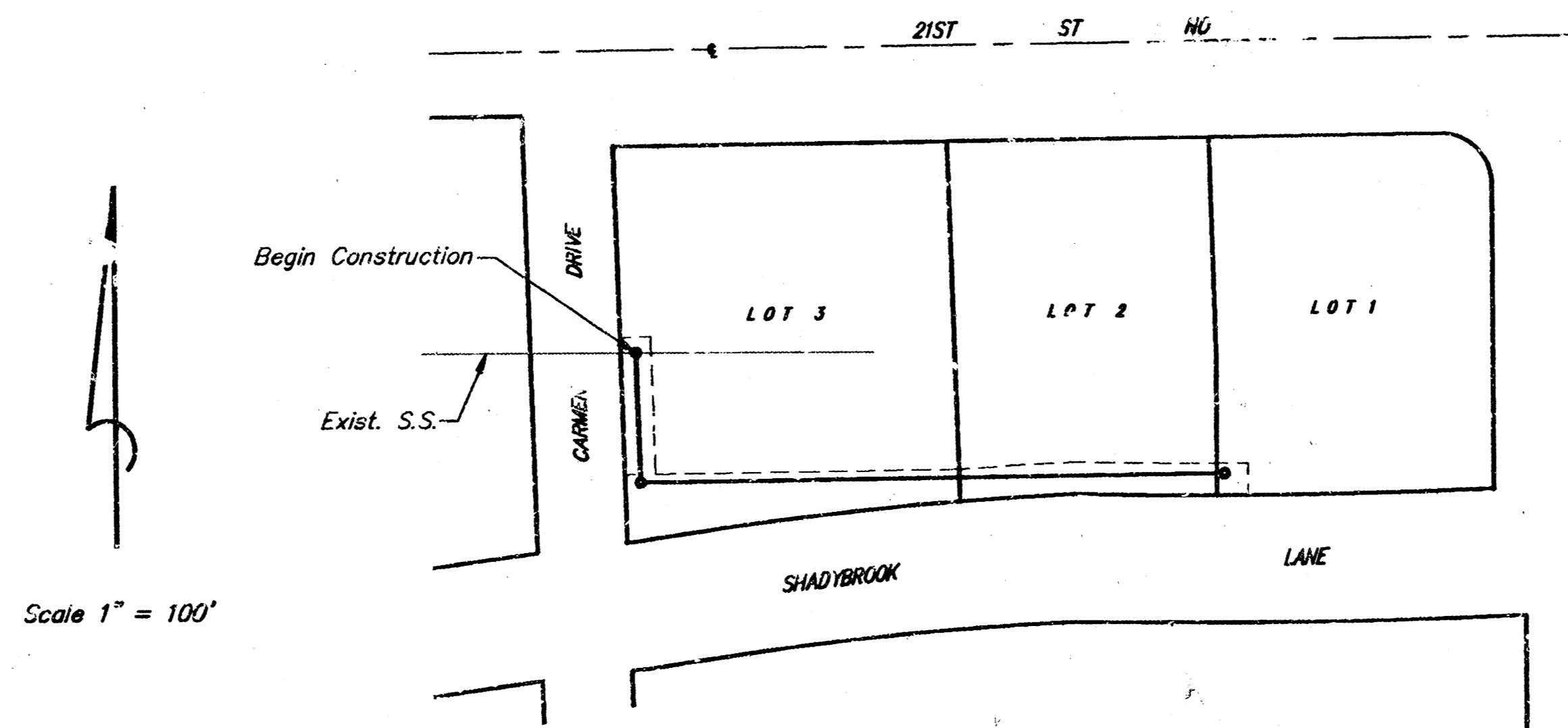
1. Traffic generated outside the project area and local business or residential traffic generated within the project area are to be carried through construction.
2. Underground utility service lines and overhead utility pole lines are to be adjusted by others if necessary prior to construction unless the plans specifically call for their adjustment by the Contractor or by their owner. Existing utilities and their location, as shown on the plans, represent the best information obtainable for design. The Contractor will be required to work around existing utilities within the right-of-way which do not conflict with proposed construction.
3. Rubble from the removal of miscellaneous structures and excess excavation which is to be wasted shall be disposed of on sites to be provided by the Contractor. These sites shall be approved by the Engineer as to suitability, appearance and site location. Locations that, in the opinion of the Engineer, will leave an unsightly appearance will not be approved. All disposal sites must be approved by the Kansas Department of Health and Environment. Material either stockpiled or disposed of in a flood plain would require a Kansas State Board of Agricultural permit. Any material dumped in waters of the United States or wetlands is subject to U.S. Corps of Engineers permitting regulations. Any material buried or stockpiled beyond approved construction limits would require additional archaeological investigations unless buried in a previously approved borrow location.
4. Trees and shrubs in public right-of-way which are in direct conflict with proposed construction shall be removed by the Contractor with the Engineer's approval. Trees and shrubs which are not in direct conflict with proposed construction shall be saved and protected from damage.
5. The Contractor shall give all property owners and/or tenants of developed property abutting the construction of this project a minimum of ten (10) days notice prior to start of construction.
6. The Contractor shall be responsible for preserving property irons. The Contractor will be required to re-establish any property irons which are disturbed by his construction operations. Such irons shall be re-established by a licensed Land Surveyor in accordance with state laws.
7. The Contractor shall contact all affected utility companies concerning the relocation of utility lines as per the plans. Contractor shall verify that existing utilities serving the homes to be abandoned have been disconnected and are no longer active.
8. Contractor will be required to provide a minimum notice of twenty-four (24) hours to utility companies prior to starting any excavation as follows:  
  

Kansas One-Call	687-2470
-----------------	----------

The Contractor must notify the following before construction and in case of an emergency:

K.P. & L. Gas Service Company	263-7511
Kansas Gas & Electric	264-1141
Arkla Gas Company	942-8350 or 263-8161
Southwestern Bell Telephone Company	1-371-2611
Cablevision	262-4270 or 263-2061
City of Wichita Water Department	268-4508
City of Wichita Sewer Maintenance	268-4071
9. The finished manhole top elevations are subject to revision. The Contractor shall verify manhole top elevations with the Engineer prior to ordering manhole sections.
10. Standard manhole details are on file in the City Engineers Office, 7th Floor City of Wichita, 455 N. Main, Wichita, Kansas.

**CITY OF WICHITA, KANSAS**  
**MICHAEL E. LINDEBAK - CITY ENGINEER**

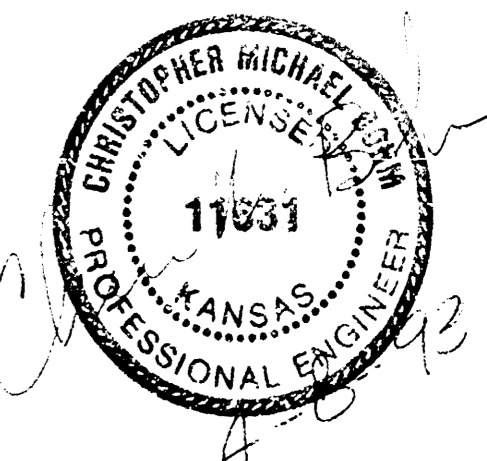


### INDEX OF SHEETS

1. TITLE SHEET
2. SEWER PLAN AND PROFILE
3. PLAT COPY, SHADYBROOK COMMERCIAL ADDN.

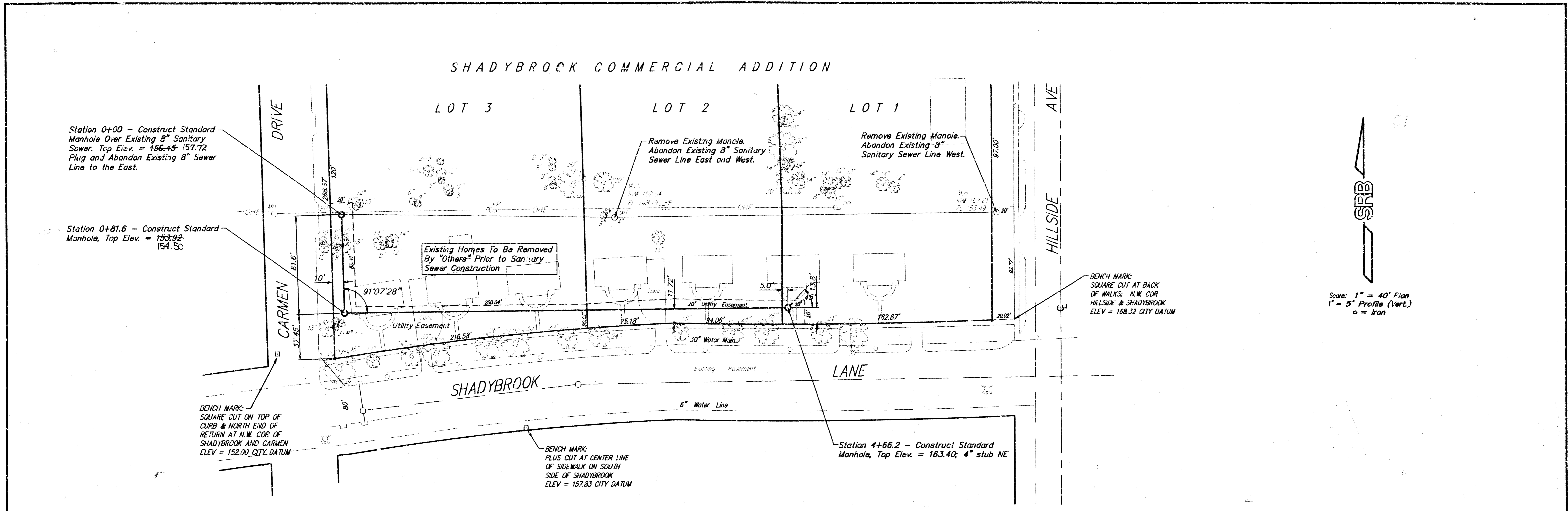
BENEFIT DISTRICT

Booked 7-21-93  
As per Plan

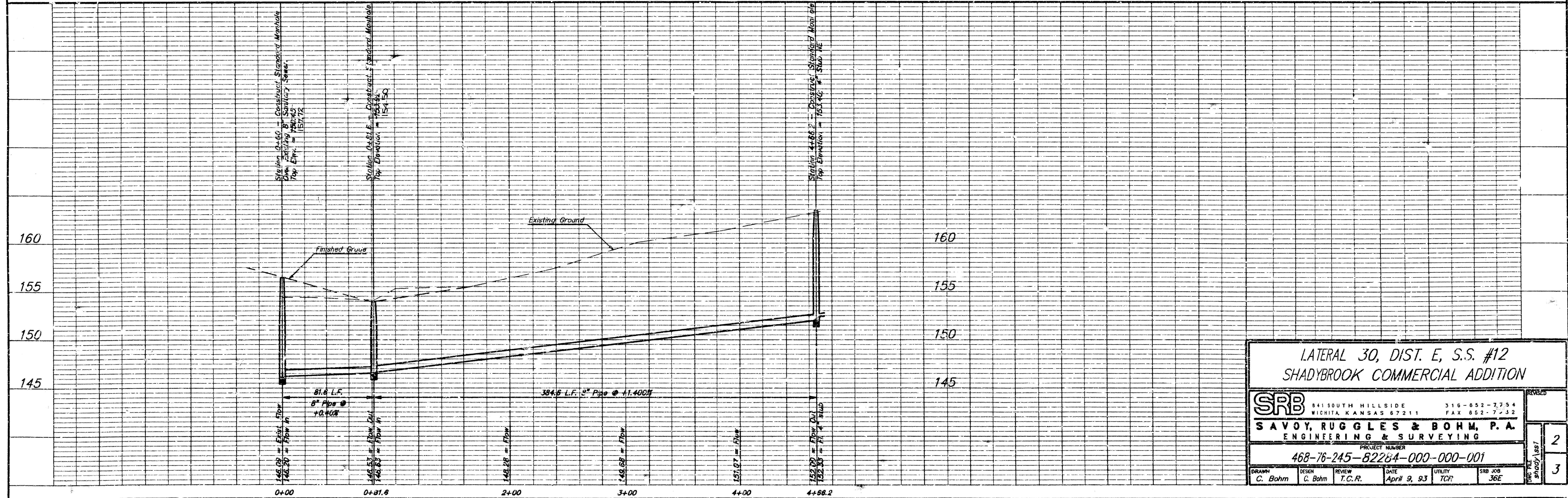


**SRB** 841 SOUTH HILLSIDE 316-652-7754  
WICHITA, KANSAS 67211 FAX 316-652-7932  
**SAVOY, RUGGLES & BOHM, P.A.**  
ENGINEERING & SURVEYING

SHADYBROOK COMMERCIAL ADDITION



Scale: 1" = 40' Plan  
1" = 5' Profile (Vert.)  
o = Iron



LATERAL 30, DIST. E, S.S. #12  
SHADYBROOK COMMERCIAL ADDITION

**SRB** 341 SOUTH HILLSIDE WICHITA, KANSAS 67211 316-652-1354 FAX 652-7-32

**SAVOY, RUGGLES & BOHM, P. A.**  
ENGINEERING & SURVEYING

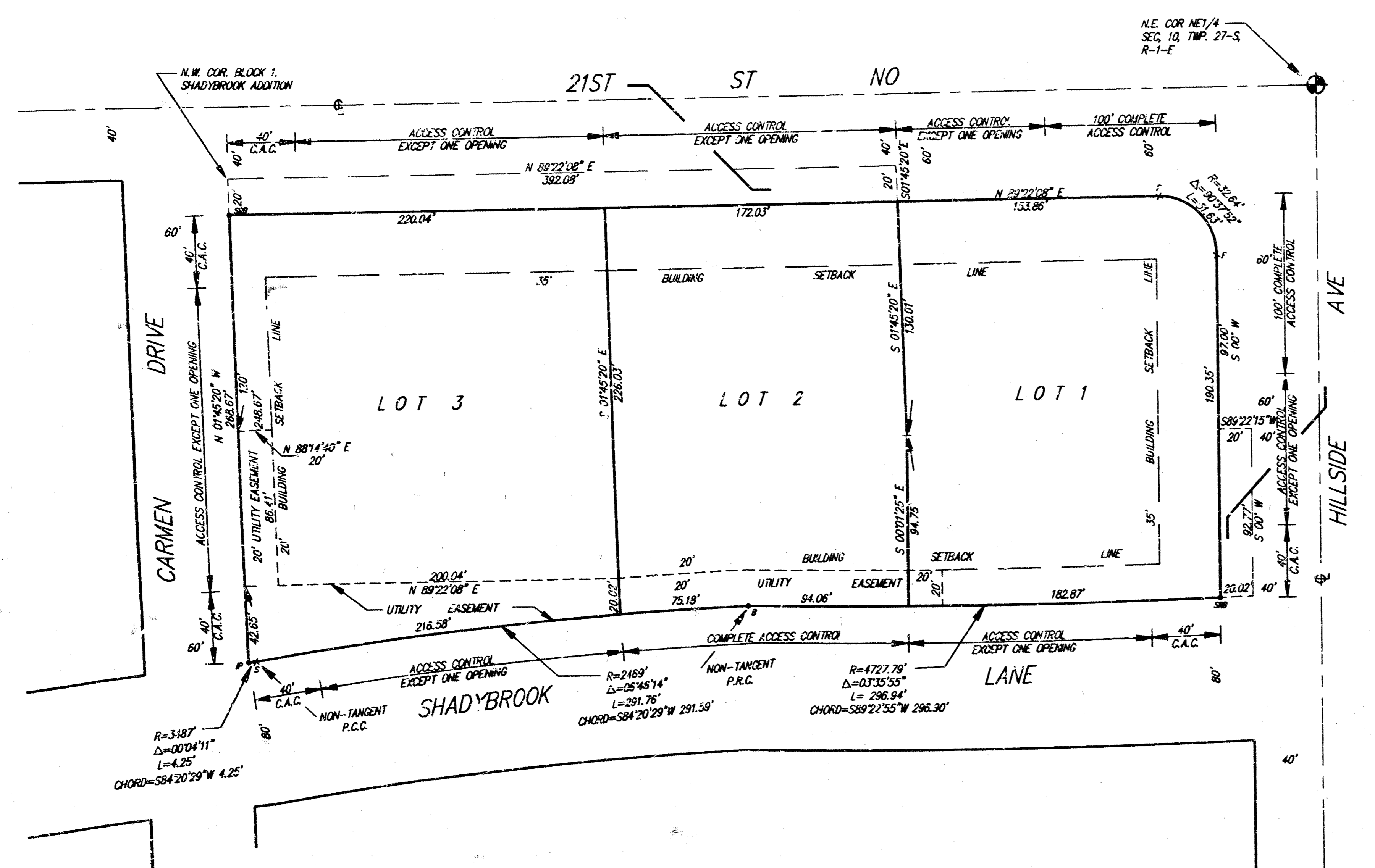
PROJECT NUMBER  
468-76-245-82284-000-001

DRAWN C. Bohm	DESIGN C. Bohm	REVIEW T.C.R.	DATE April 9, 93	UTILITY TCP	SSB JOB 36E
------------------	-------------------	------------------	---------------------	----------------	----------------

REVISED  
2  
3

# SHADYBROOK COMMERCIAL ADDITION

WICHITA, SEDGWICK COUNTY, KANSAS



1" = 50'  
C.A.C. = COMPLETE ACCESS CONTROL

- ⊕ 1/2" REBAR W/ SRB CAP (SET)
- ⊕ CHISEL CROSS (FOUND)
- ⊕ 1/2" REBAR W/ BAUGHMAN CAP (FOUND)
- ⊕ CHISEL CROSS (SET)
- ⊕ 3/4" IRON PIPE (FOUND)

BENCH MARK:  
SQUARE CUT ON TOP OF CURB & NORTH END OF RETURN AT N.W. COR. OF SHADYBROOK AND CARMEN  
ELEV = 152.00 CITY DATUM

BENCH MARK:  
SQUARE CUT AT BACK OF WALKER N.W. COR. HILLSIDE & SHADYBROOK  
ELEV = 168.32 CITY DATUM

State of Kansas) SS  
Sedgwick County)

We, Savoy, Ruggles & Bohm, P.A., Surveyors in aforesaid county and state do hereby certify that, under the supervision of the undersigned, we have surveyed and platted "SHADYBROOK COMMERCIAL ADDITION", Wichita, Sedgwick County, Kansas and that the accompanying plat is a true and correct exhibit of the property surveyed, described as and being a replat of Lot 1, Elizabeth's Addition, Wichita, Sedgwick County, Kansas and all of Reserve in Block 1, except that part platted as Elizabeth Addition, and all of Lots 1, 2, 3, 4, 5, 6, 7, and 8, Block 1, Shadybrook Addition to the City of Wichita, Kansas, Sedgwick County, Kansas.

Existing public easements and dedications being vacated by virtue of KSA 12-512(b).  
All being situated in the NE1/4 of Sec. 10, Twp. 27-S, R-1-E of the 6th P.M., Sedgwick County, Kansas.

Savoy, Ruggles & Bohm, P.A.  
Date \_\_\_\_\_ Surveyor  
Mark A. Savoy

Know all men by these presents that we, the undersigned, have caused the land described in the surveyors certificate to be platted into Lots and Streets to be known as "SHADYBROOK COMMERCIAL ADDITION", Wichita, Sedgwick County, Kansas. The drainage and utility easement is hereby granted as indicated for drainage purposes and for the construction and maintenance of all public utilities. The Streets are hereby dedicated to and for the use of the public. Access controls are hereby granted as indicated on the face of the plat to the appropriate governing body with the location of all openings being subject to the approval of the Engineer of the appropriate governing body.

The City of Wichita, Kansas

Mayor  
Frank M. Ojile  
City Clerk  
Pat Burnett

State of Kansas) SS  
Sedgwick County)

The foregoing instrument acknowledged before me, this \_\_\_\_\_ day of \_\_\_\_\_, 1993, by Frank M. Ojile, Mayor and Pat Burnett, City Clerk of the City of Wichita, Kansas, on behalf of the City of Wichita, Kansas.

Notary Public

My App't. Exp. \_\_\_\_\_

This plat of "SHADYBROOK COMMERCIAL ADDITION", Wichita, Sedgwick County, Kansas, has been submitted to and approved by the Wichita-Sedgwick County Metropolitan Area Planning Commission, Wichita, Kansas. Dated this \_\_\_\_\_ day of \_\_\_\_\_, 1993.

Wichita-Sedgwick County Metropolitan Area Planning Commission

Chairman  
L. O. Breckenridge, Jr.  
Secretary  
Marvin S. Krout

This plat approved and all dedications shown hereon, accepted by the City Council of the City of Wichita, Kansas, this \_\_\_\_\_ day of \_\_\_\_\_, 1993.

Mayor  
Frank M. Ojile  
City Clerk  
Pat Burnett

Entered on transfer record this \_\_\_\_\_ day of \_\_\_\_\_, 1993.

County Clerk  
Susan E. Crockett-Spoon

State of Kansas) SS  
Sedgwick County)

This is to certify that this plat has been filed for record in the office of the Register of Deeds, this \_\_\_\_\_ day of \_\_\_\_\_, 1993, at \_\_\_\_\_ o'clock \_\_\_\_\_ M. and is duly recorded.

Register of Deeds  
Pat Kettler  
Deputy  
Ed Resa

SHADYBROOK COMMERCIAL ADDITION NOT YET RECORDED					
SRB		841 SOUTH HILLSIDE WICHITA, KANSAS 67211		318-651-7754 FAX 652-7932	
SAVOY, RUGGLES & BOHM, P.A. ENGINEERING & SURVEYING					
PROJECT NUMBER 468-76-245-82284-000-000-001					
OWNER	DESIGN	REVIEW	DATE	UTILITY	SRB JOB