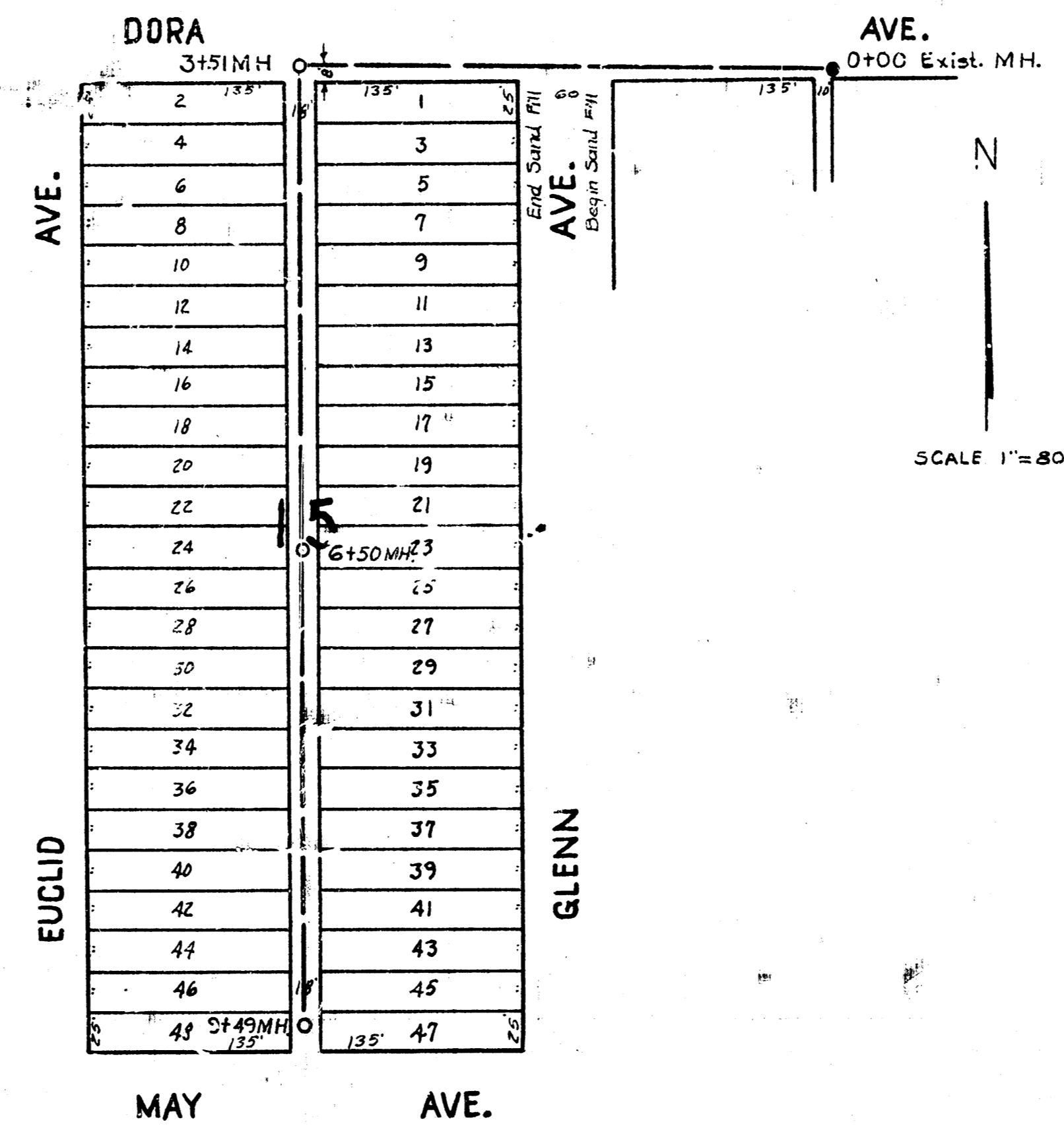


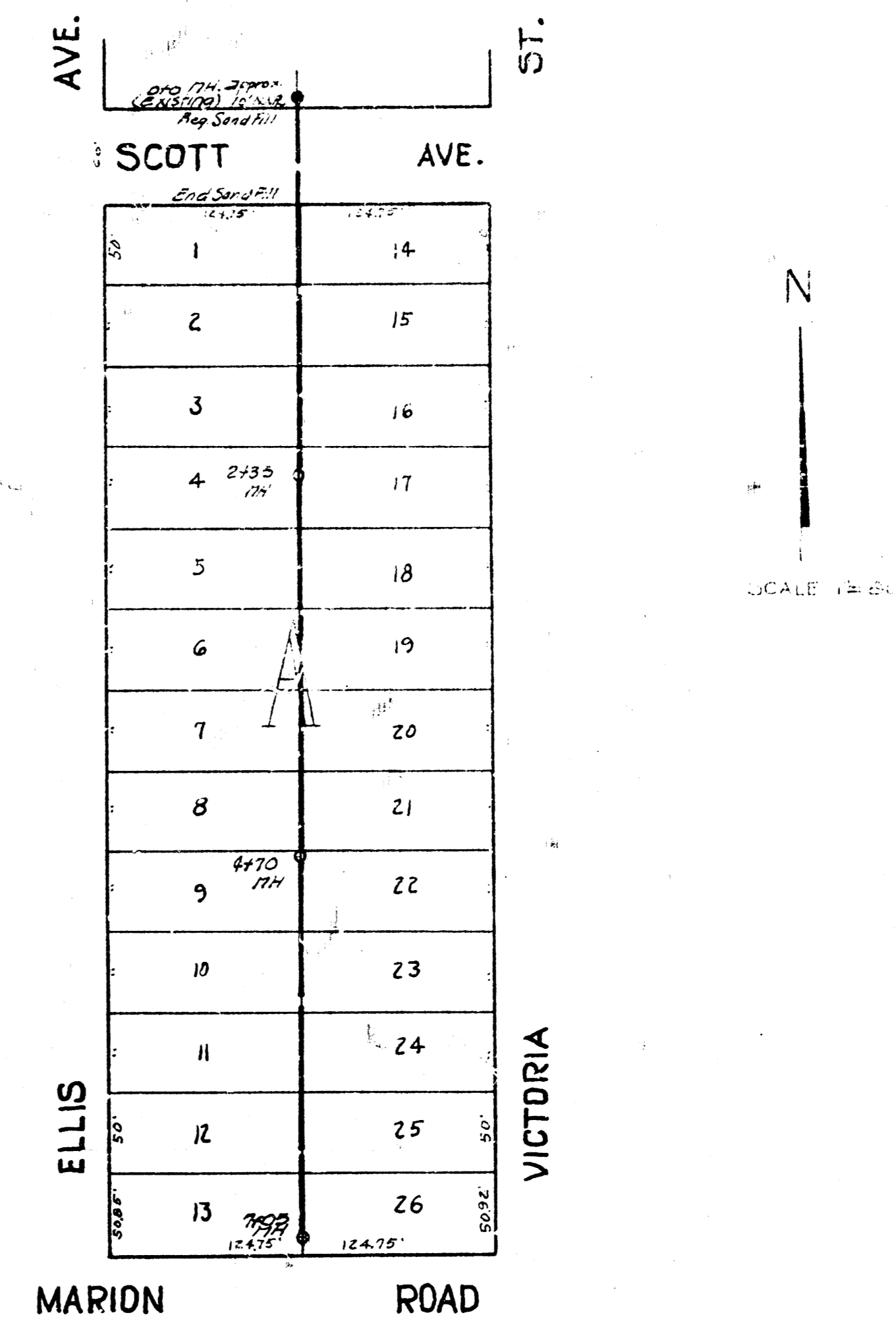
LAT. I, DIST. Q, S.S.\*12  
PROJECT NO. C 20-17

B. M. 118.97 N. W. Cor. Conc. Porch Ho. # 1114 N. Ash.  
B. M. 115.83 East Rim M. H. 11.0+00.



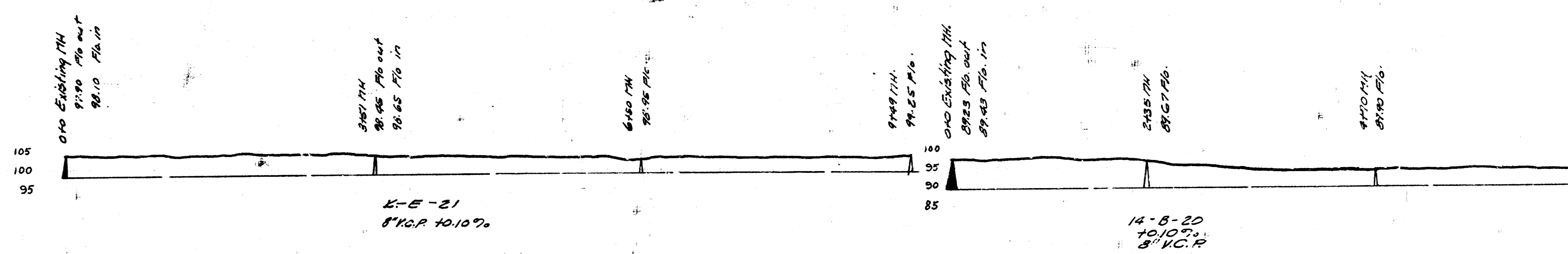
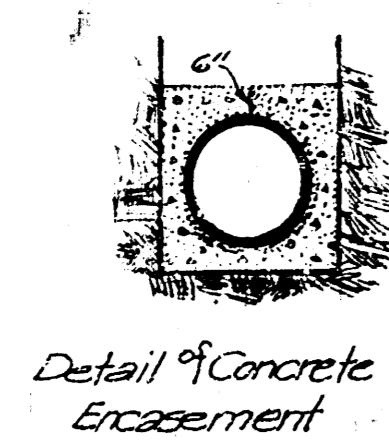
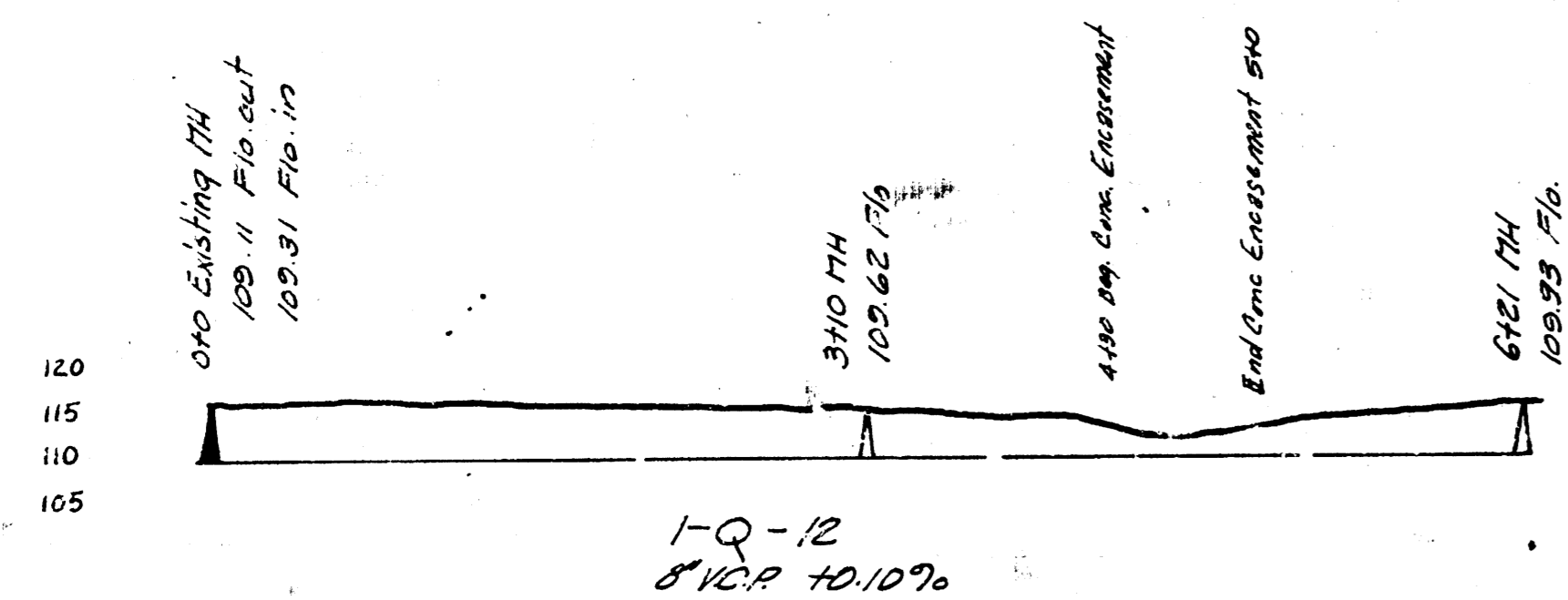
LAT. K, DIST. E, S.S.\*21  
PROJECT NO. C 20-14

B. M. 103.02 "G" in Globe E. cb. Vine N. L. Hwy.



LAT. 14, DIST. B, S.S.\*20  
PROJECT NO. C 29-63

B. M. 99.63 T in F. R. Greenwood & Pawnee.  
B. M. 37.26 No. Rim M.H. at Sta. 0+00.



Lat. I, Dist. Q, S.S.\*12 - Lat. K, Dist. E, S.S.\*21  
Lat. 14, Dist. B, S.S.\*20  
City of Wichita, Kansas  
L. H. White City Engineer  
Date 3-27-50 Proj. Nos. C20-17  
C20-14  
C29-63