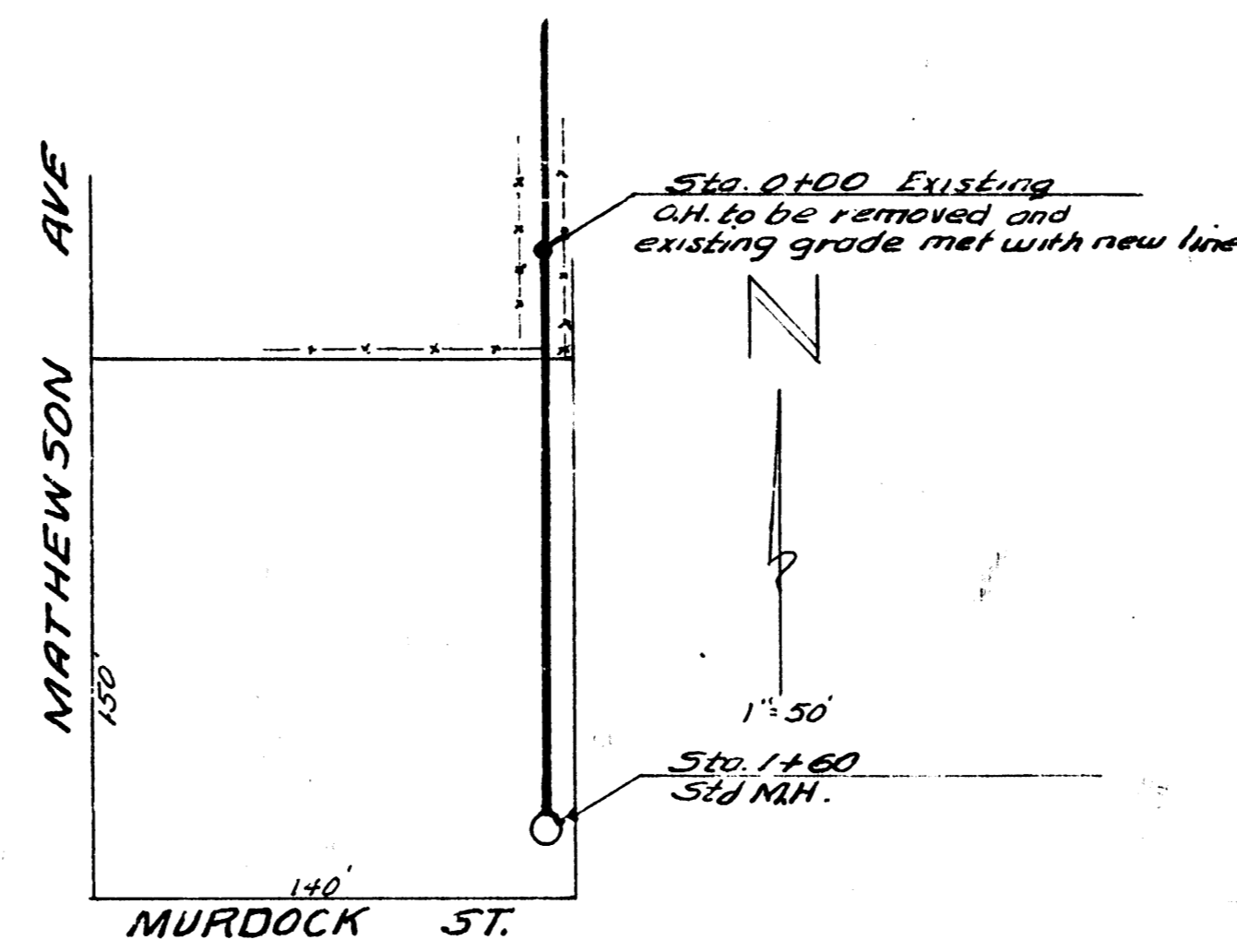
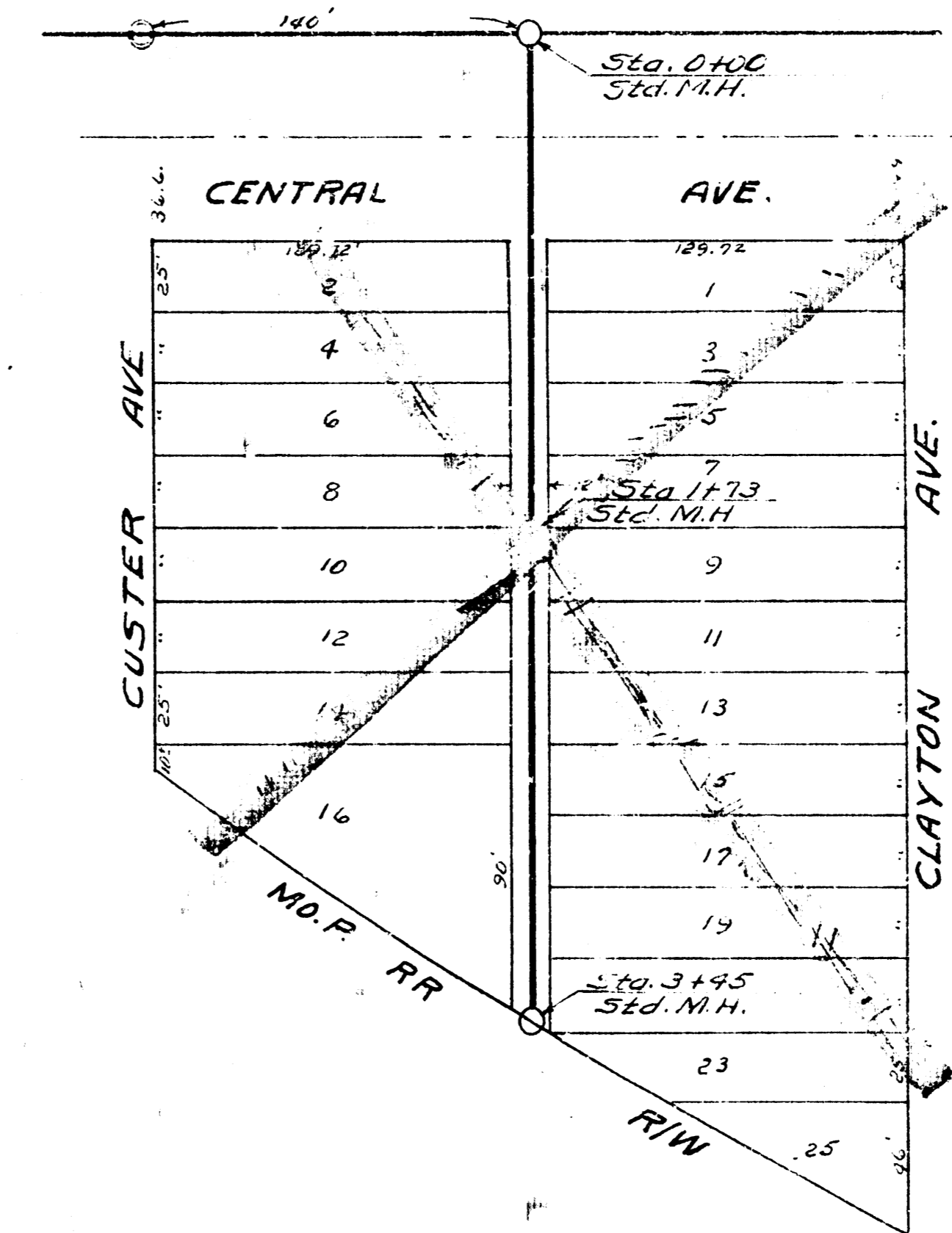


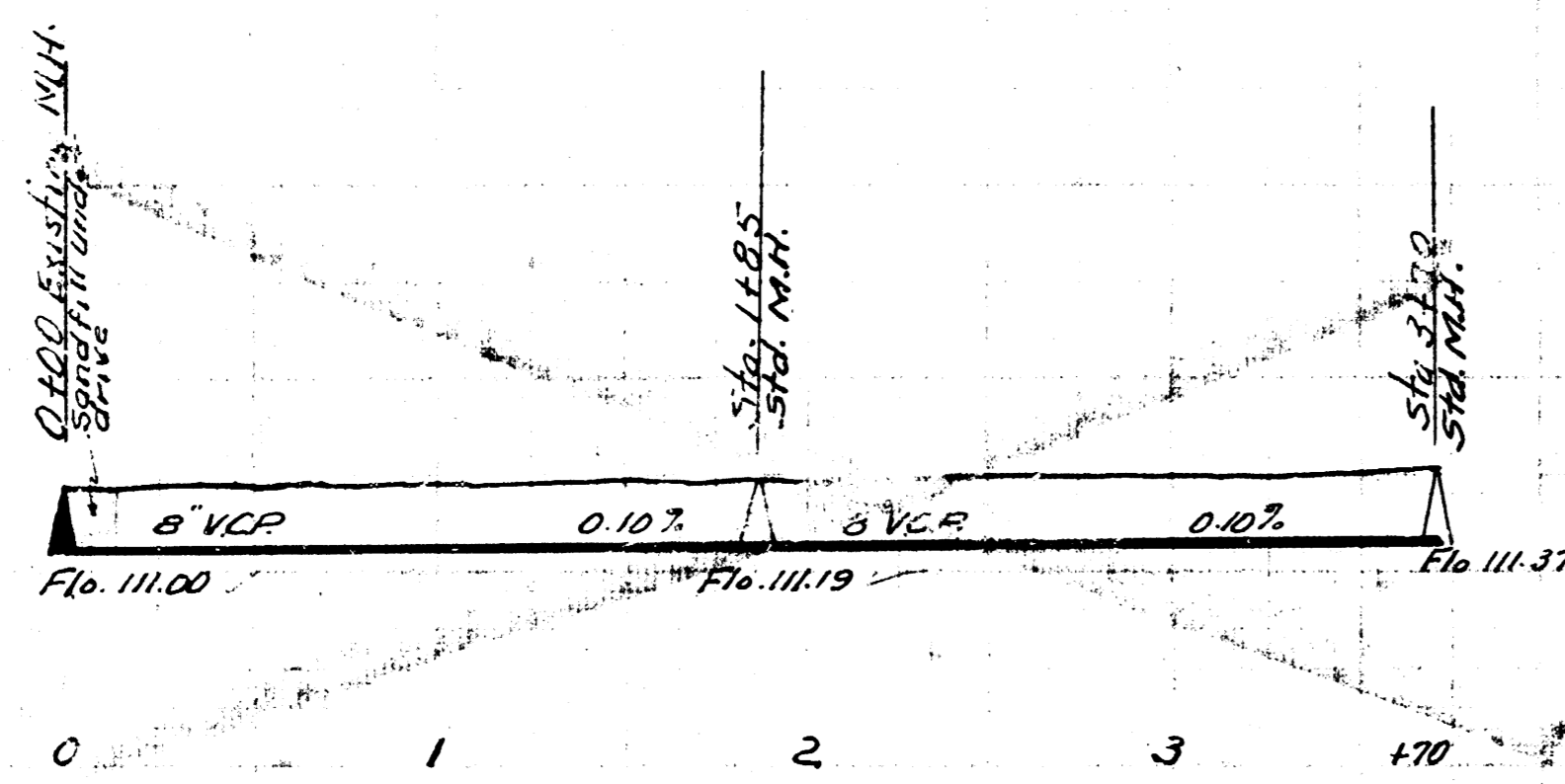
B.M. 119.41 5th St. M.H. 0+00



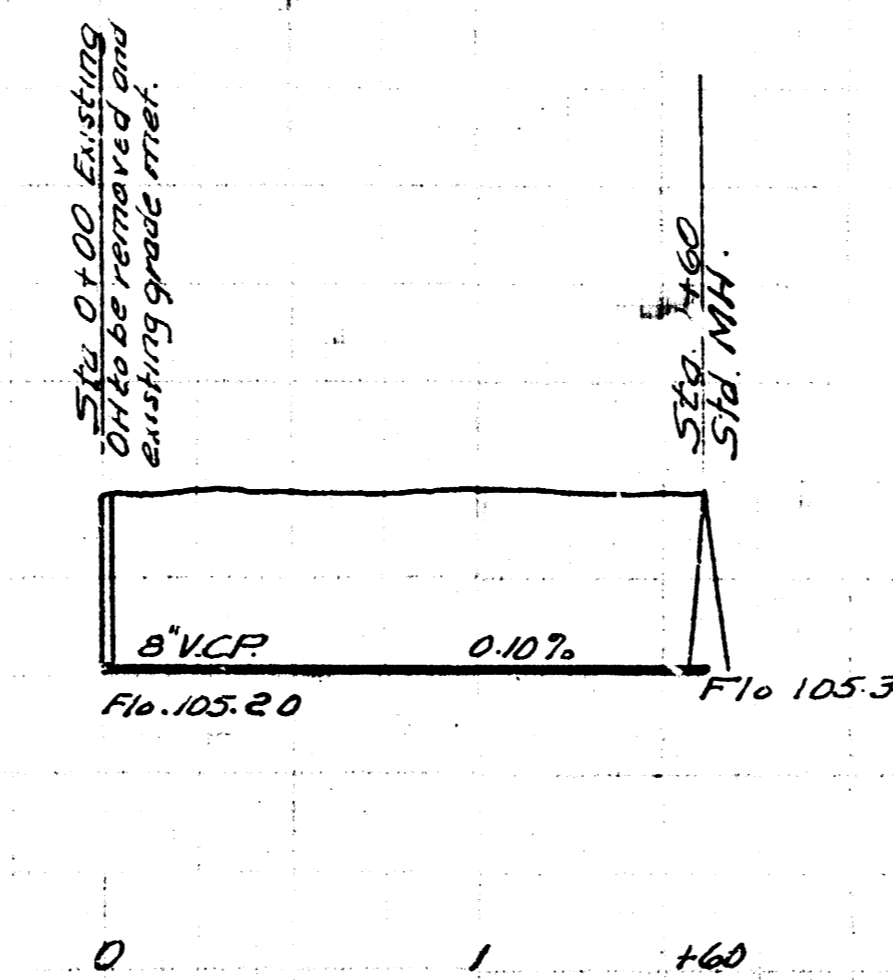
B.M. 113.01 Iron in thimble N.S. MURDOCK & MATHEWSON



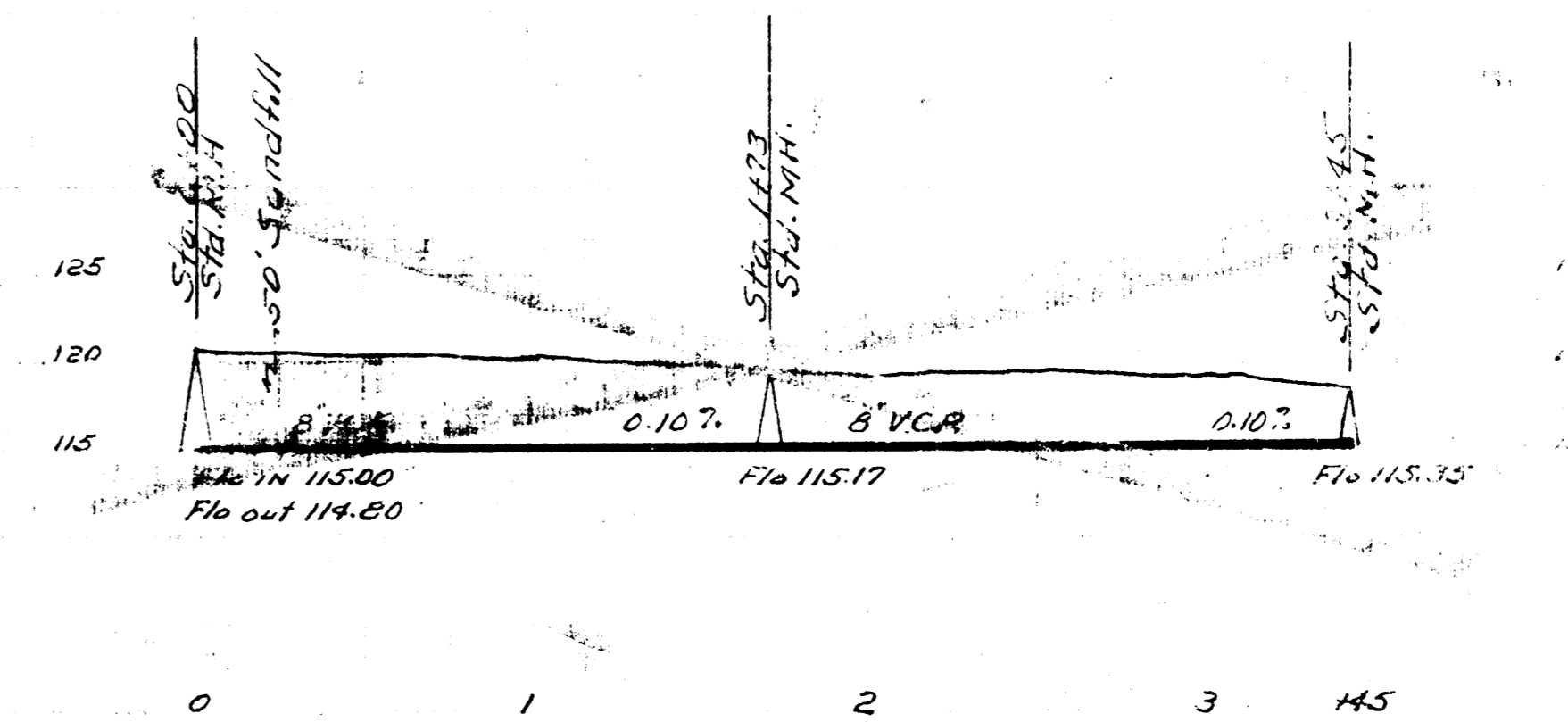
B.M. 121.29 "M" in Mueller F.P. SE Cor. Clayton & Central



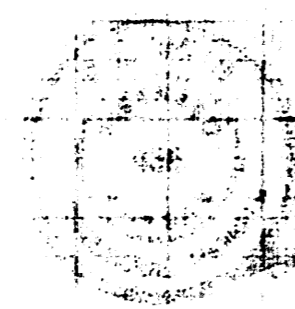
Date
Drawn by
Checked by
Sheet No.



Date
Drawn by
Checked by
Sheet No.



LAT. 2 DIST. 9 SS. 12
CITY OF WICHITA KANSAS
B.E. SMITH CITY ENGINEER
Proj. No. C-24-13



LAT. 40 SS. 20
CITY OF WICHITA KANSAS
B.E. SMITH CITY ENGINEER
Proj. No. C-24-9

LAT. 35 DIST. A SS. 21
CITY OF WICHITA KANSAS
B.E. SMITH CITY ENGINEER
Proj. No. C-24-16