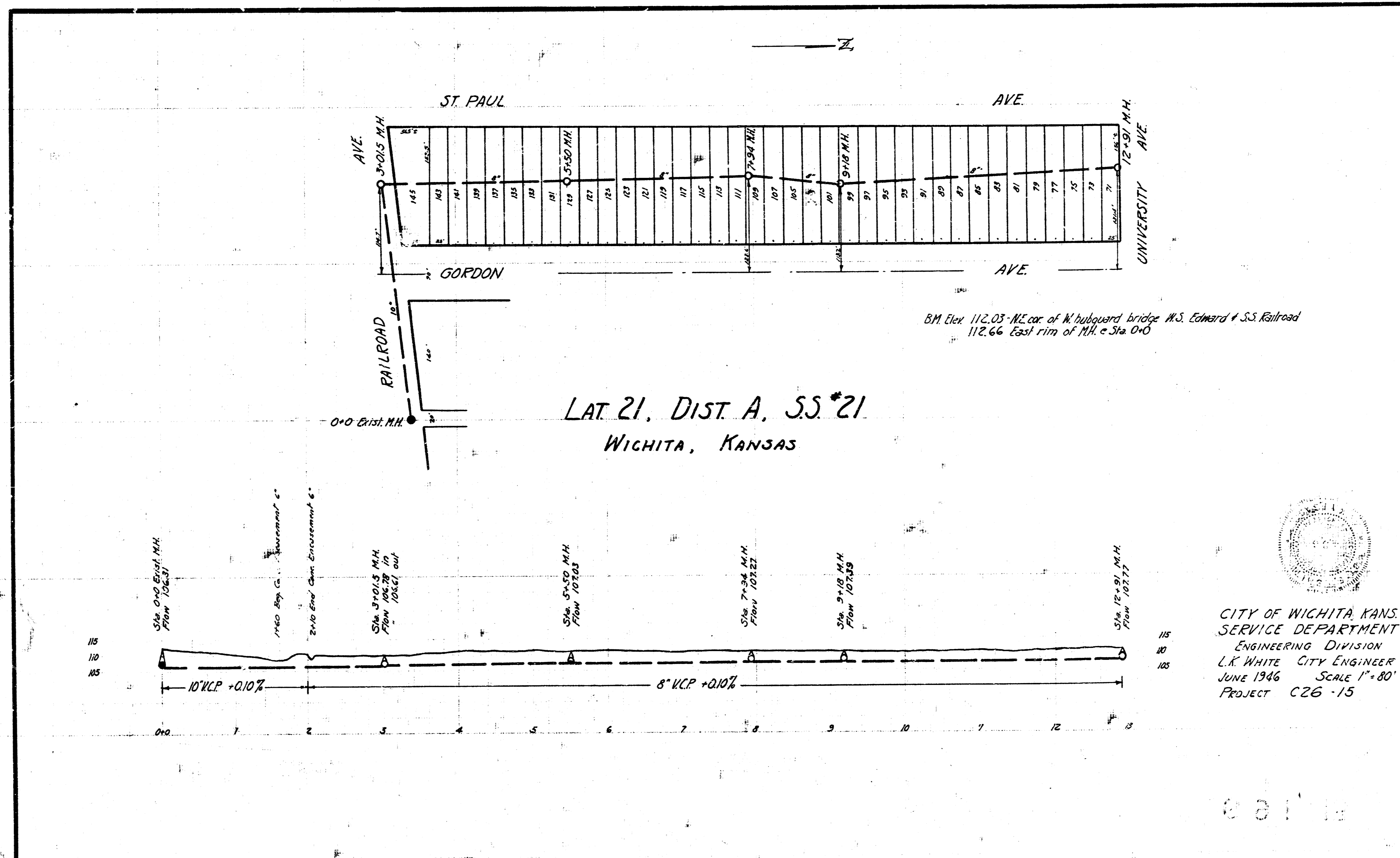
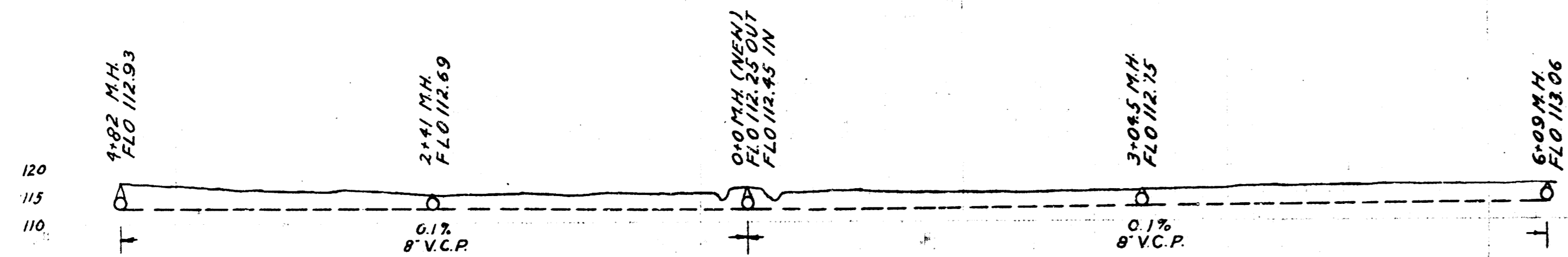
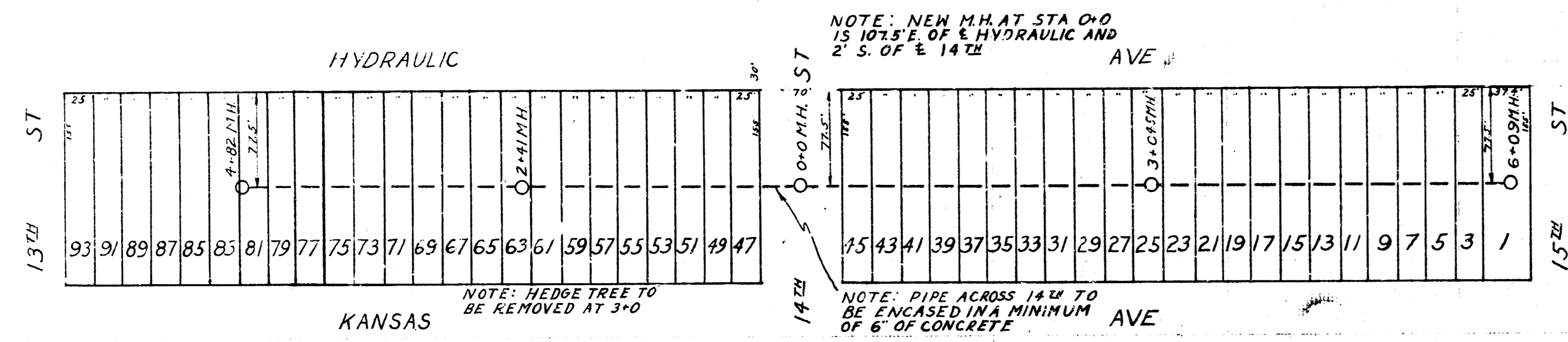


B.M. 11938 STANDARD S.E. COR. HYDRAULIC = 13.14'  
 B.M. 11800 20 P. SPIKE IN ELM 110' E. HYDRAULIC, S.S. 15<sup>TH</sup>

LAT. D, DIST. R. S.S. #12



CITY OF WICHITA, KANS.  
 SERVICE DEPARTMENT  
 ENGINEERING DIVISION  
 L.K. WHITE, CITY ENGINEER  
 JUNE 1946  
 SCALE 1" = 80'  
 PROJECT C26-15