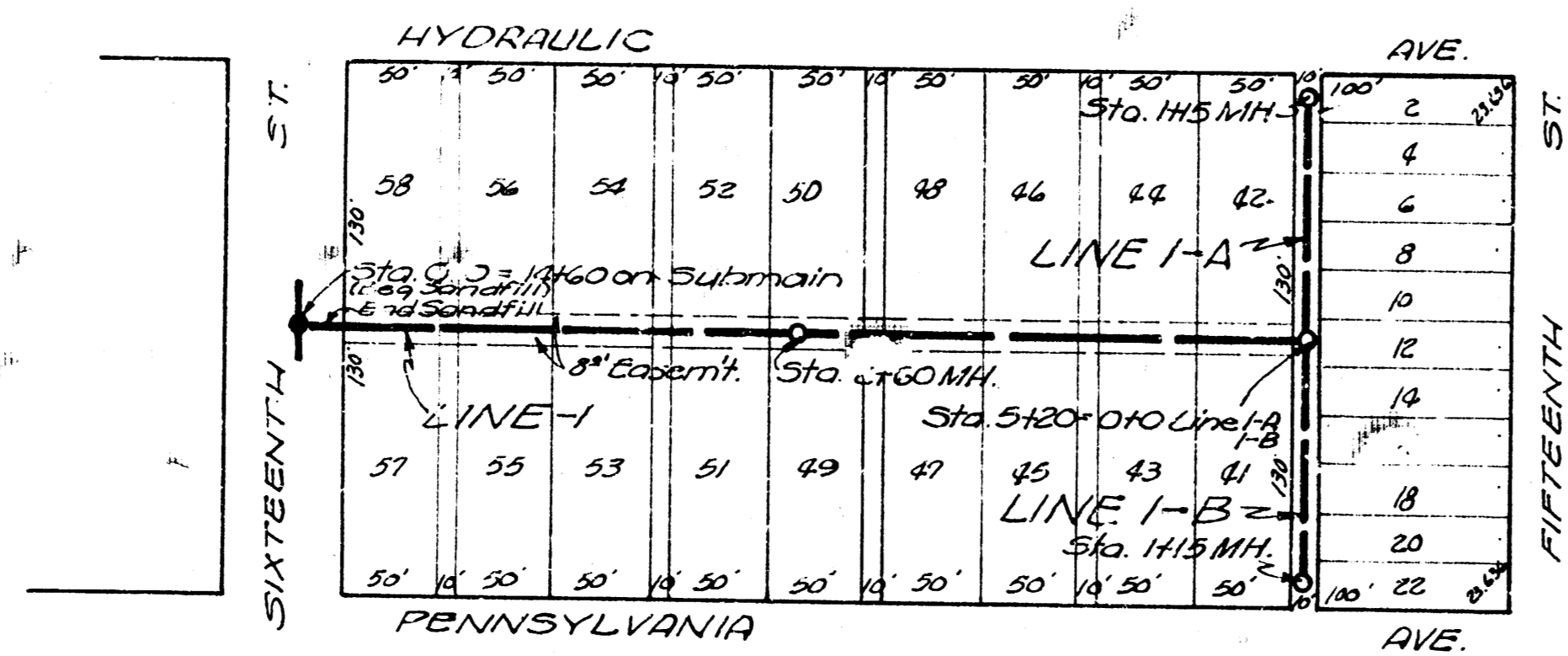
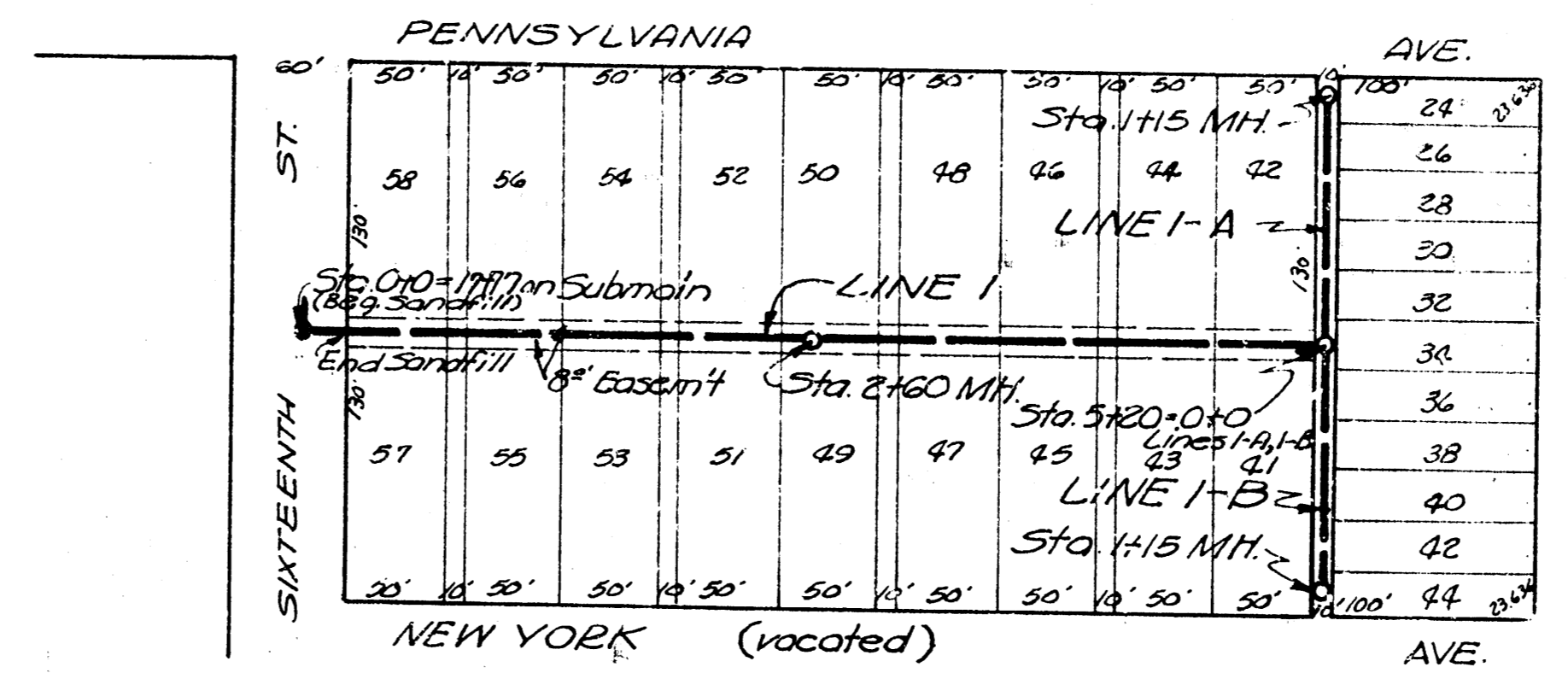


**SUBMAIN Y, SANITARY SEWER 12**  
 City of Wichita, Kansas  
 L. K. White City Engineer  
 Date: 10-5-50 Prof. No. C20-21

Scale 1"=80'

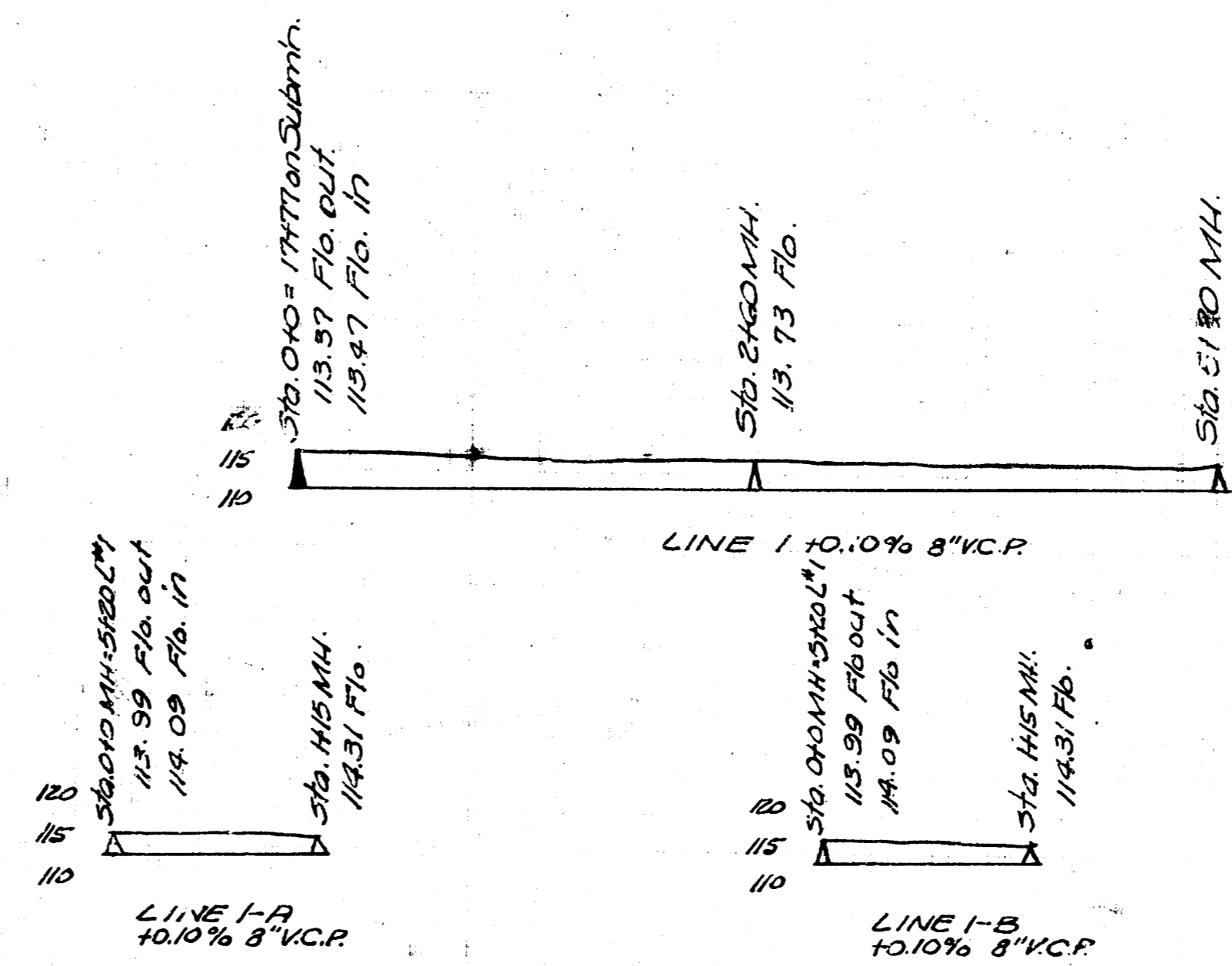
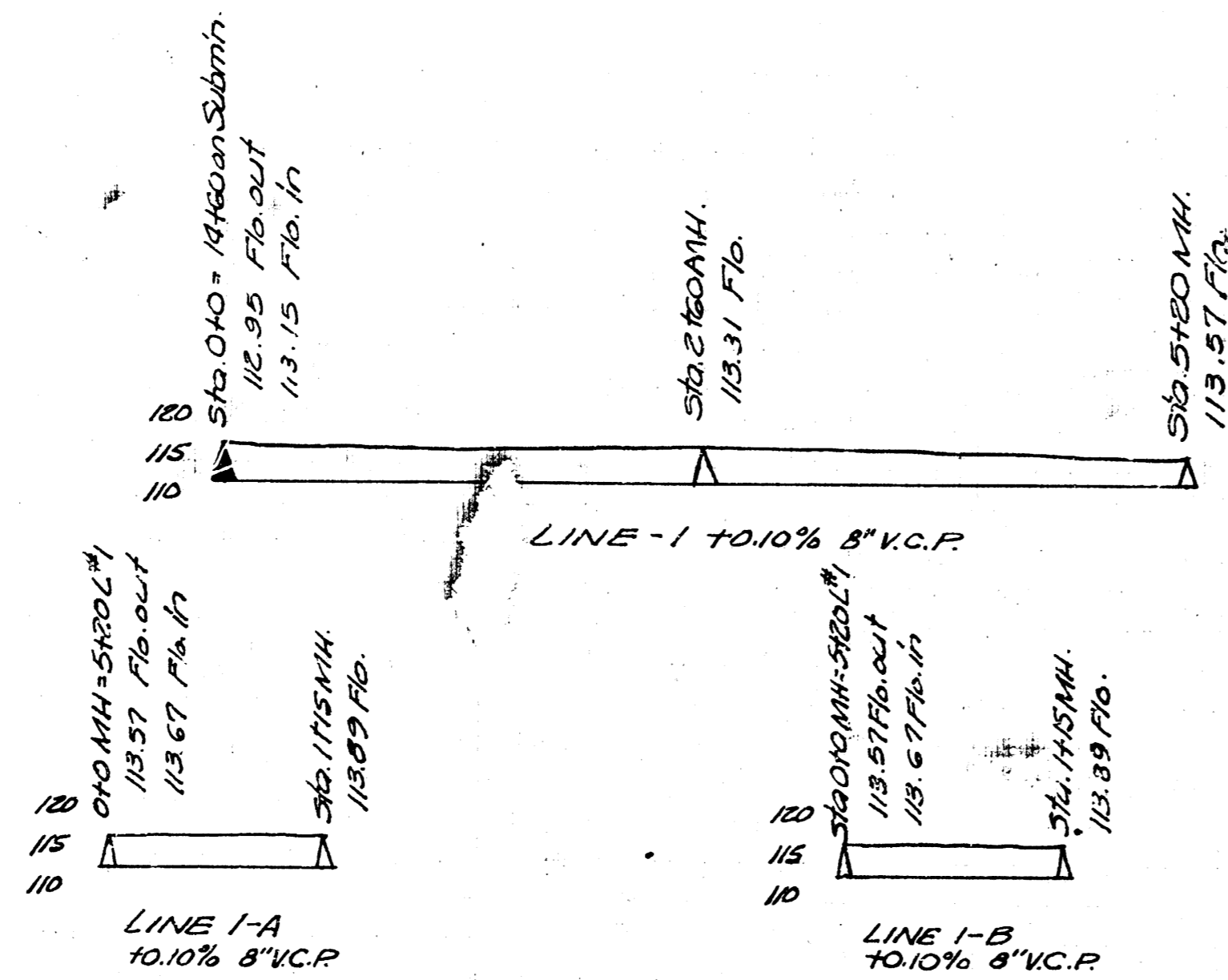


Lot 3, Submain Y, S.S. 12  
Proj. No. C20-24

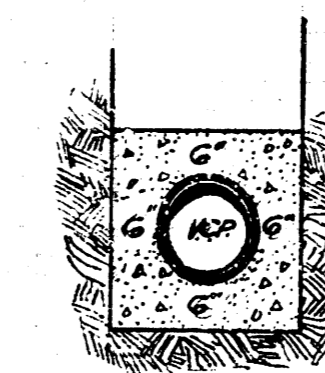


Lot 2, Submain Y, S.S. 12  
Proj. No. C20-23

B.M. 117.39, 50' Rim of M.H. at Sta. 0+00 1/4th Plat.  
B.M. 120.76 "C" in Chatanooga P.P. N.W. Cor. 15th Plat.



Note - All sewer ditch with less than 30" of cover to be Conc. Encased.



Detail of Conc. Encasement  
No Scale

Lot 2, SUBMAIN Y, S.S. 12  
Lot 3, " " " "

City of Wichita, Kans.  
L.K. White City Engineer

Date 10-5-50 Proj. No. C20-23  
C20-24