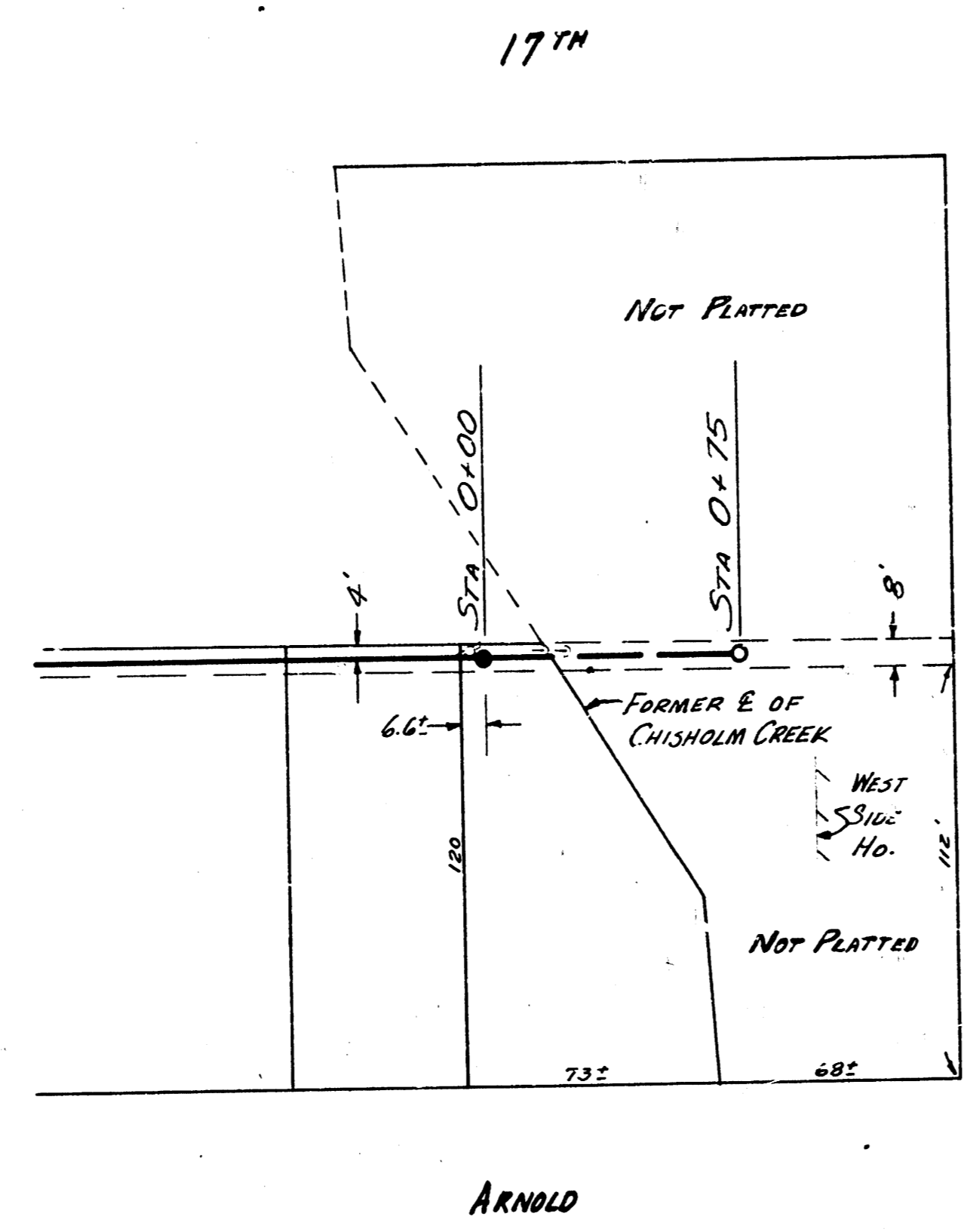
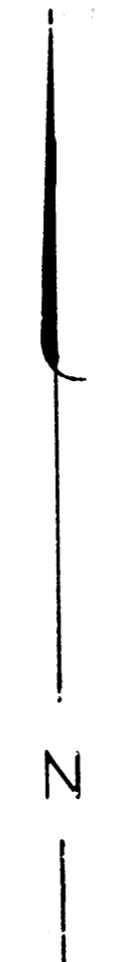


Surveyed Hanson Notebook 1A.26
 Plan Design Sellers
 Checked
 Date Nov. 1955

B.M. 117.97 W. Riv. M.H. 0+00



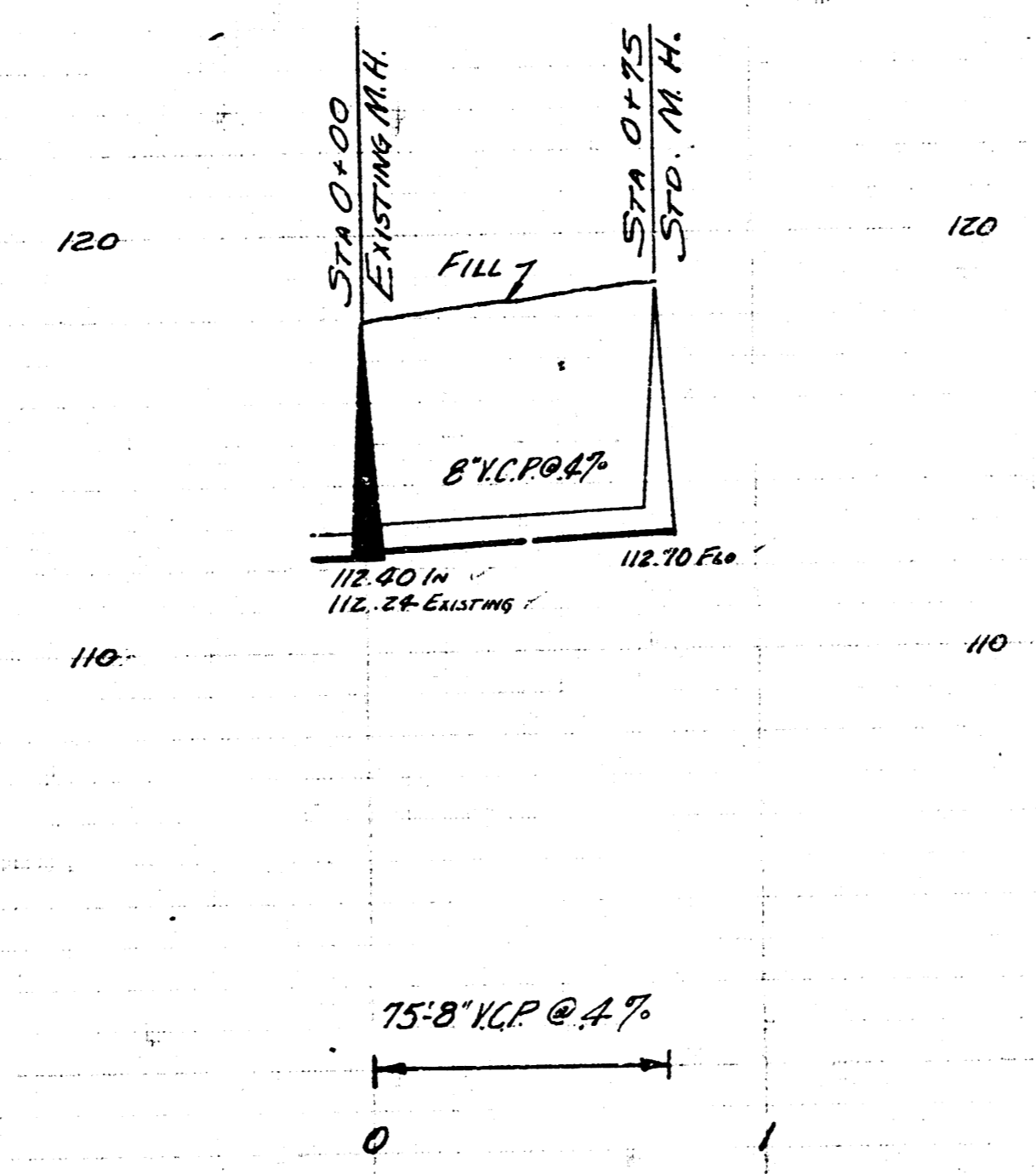
PENNSYLVANIA



NOTE

IN THE EVENT THAT THE PROPOSED SEWER IS ABOVE THE
 BED OF THE OLD CHISHOLM CREEK AND THE FILL MATERIAL
 IS UNSATISFACTORY (IN THE OPINION OF THE ENGINEER) TO
 SUPPORT THE SEWER, THE CONTRACTOR SHALL REMOVE THE
 FILL TO THE BED OF THE OLD CREEK AND REFILL THE TRENCH
 WITH A TWO SACK SAND MIX CONCRETE TO THE SPRING LINE OF
 THE SEWER PIPE.

PLAN SCALE 1" = 40'
 PROFILE SCALE 1" = 40' HOR. 1" = 4' VERTICAL



EXT. LAT. 10 SUB. Y SS. 12
 CITY OF WICHITA
 B.E. SMITH CITY ENGINEER
 NOV. 1955 PRIVATE CONTRACT