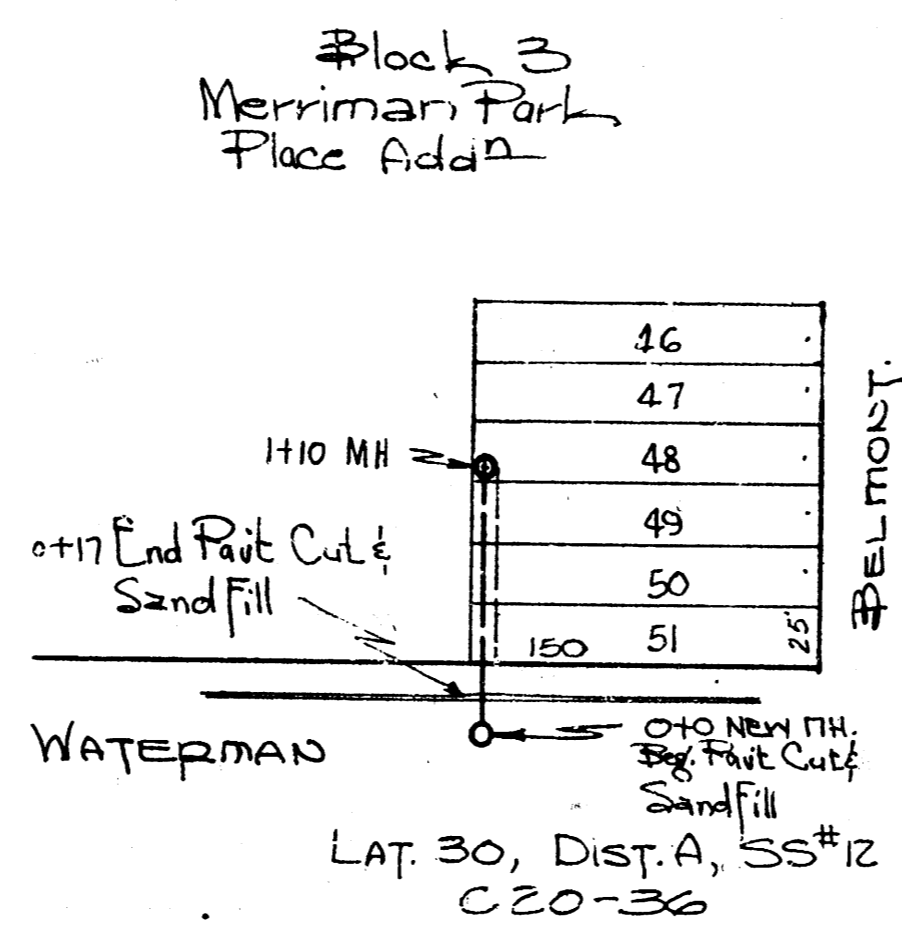
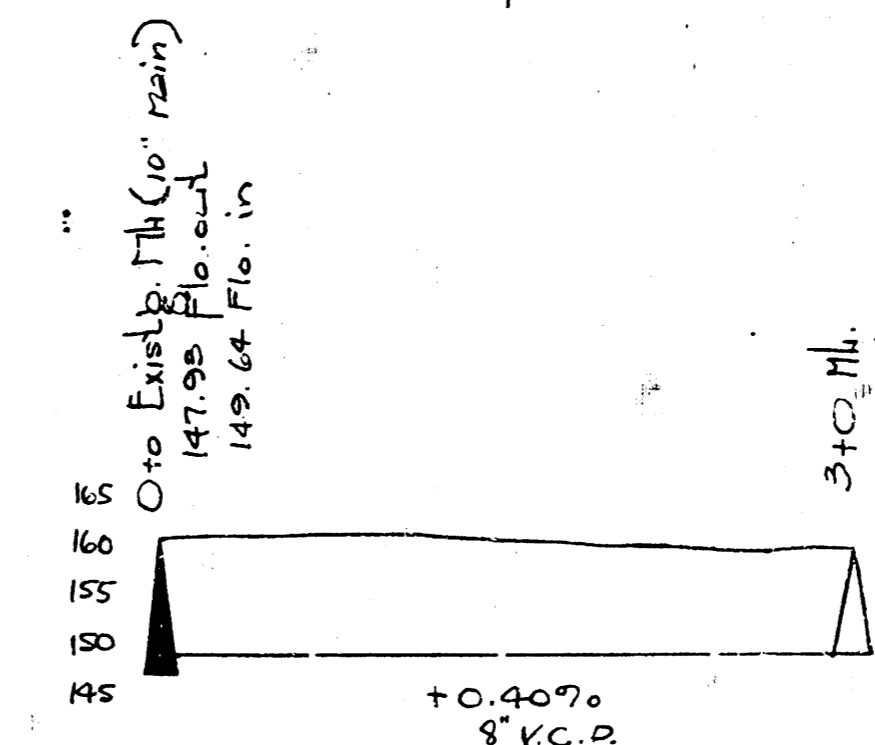
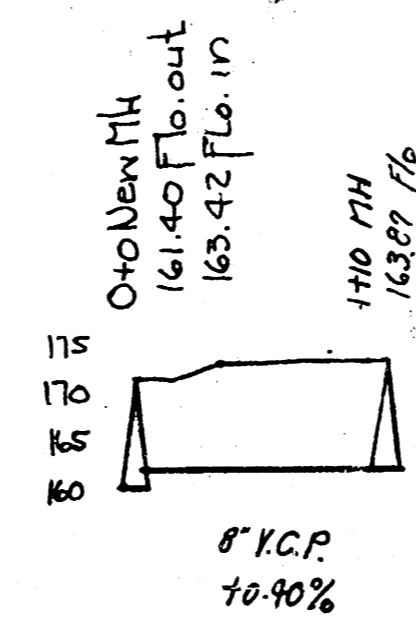
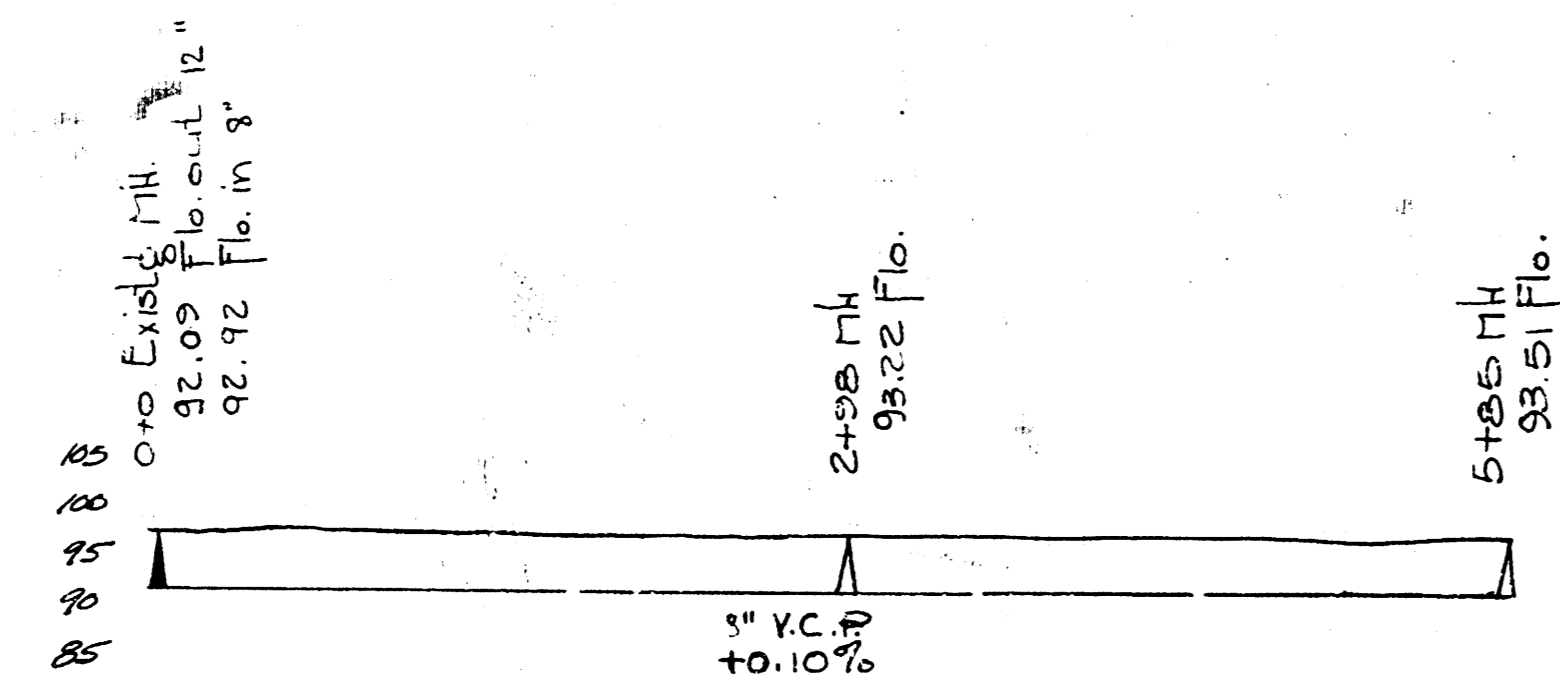
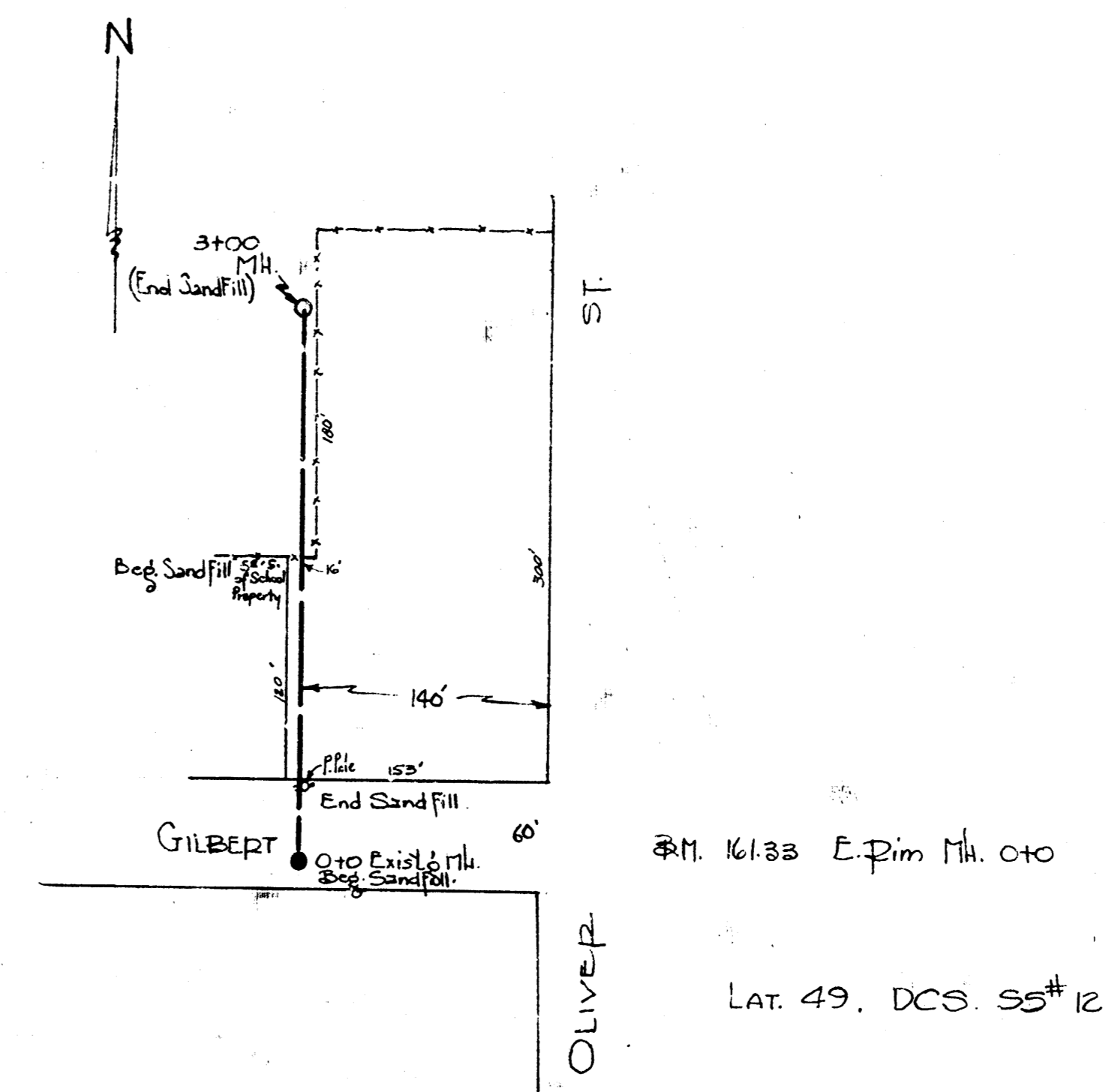


0+0 Existing M.H. on 12" Main  
 LEVY  
 LAT. 1, SUBMAIN Z, SS# 12  
 C20-42

B.M. 9859 Prop. iron N.L. Levy & C.L. Grove  
 B.M. 10076 "G" in Globe S. and E. cor. Estelle & Juniper.



B.M. 1543 "T" Top F.P. NW Corner  
 Waterman & Belmont.



LAT. 49, D.C.S. SS# 12  
 LAT. 30, DISTRICT A, SANITARY SEWER # 12  
 LAT. 1, SUBMAIN Z, SANITARY SEWER # 12  
 CITY OF NICHITA, KANSAS  
 L.K. White City Engineer  
 DATE 5-24-50 Proj. No. C20