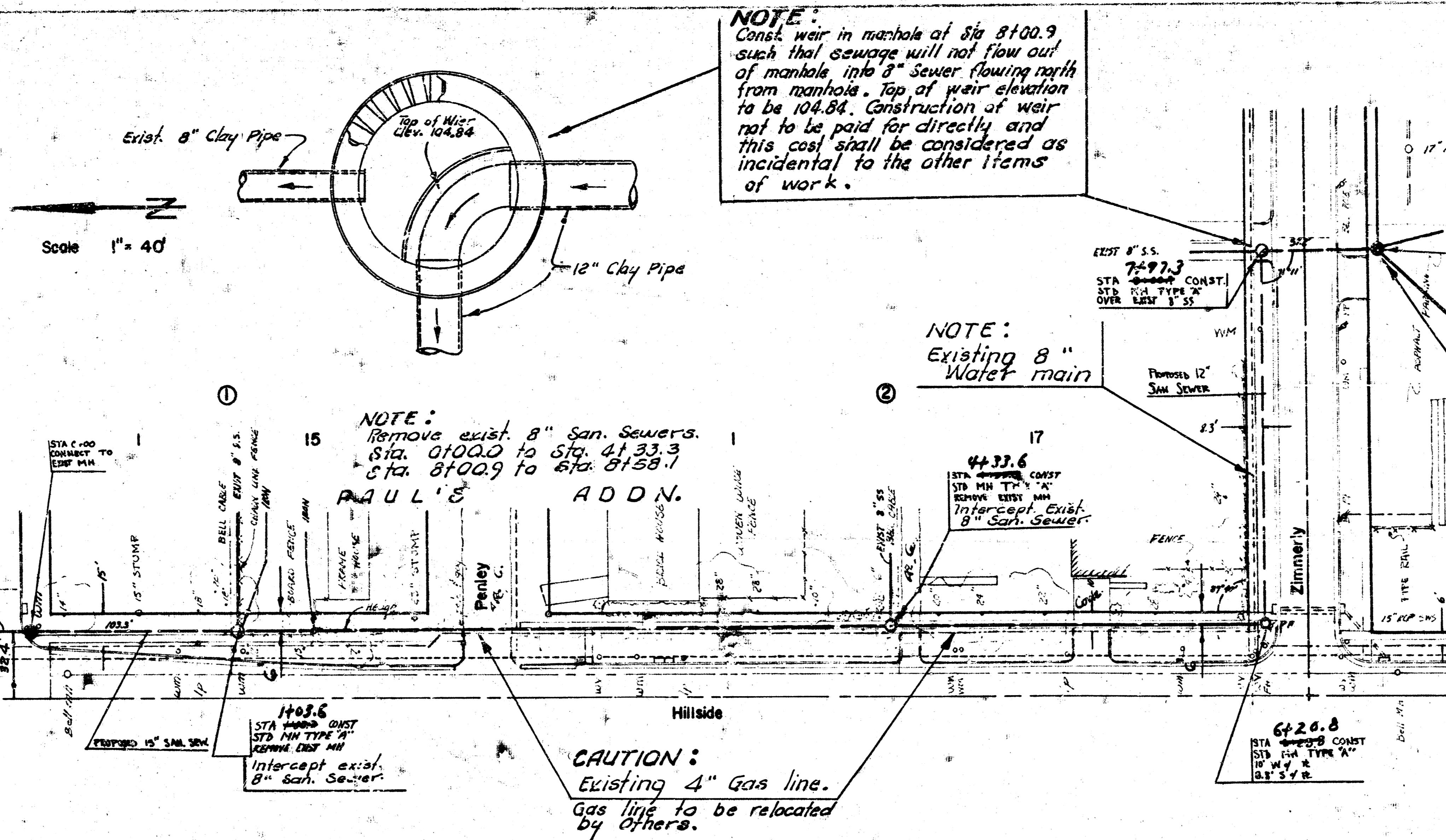


B.M. 110.38 NE cor. cons. porch house no. 753 S Hillside
 B.M. 108.59 Top SW cor ret wall on NE cor Bayley & Hillside
 B.M. 108.88 Top SW cor stone planter at N end step house no 1056 S. Hillside



NOTE: SAND FILL AND FLUSHING WILL NOT BE PAID FOR SEPARATELY AND THESE COSTS ARE TO BE INCLUDED IN THE UNIT PRICE BID FOR SEWER PIPE. NEW SEWER IS TO BE CONSTRUCTED IN SAME LOCATION AS EXISTING SEWER BETWEEN STA. 0+00 AND STA. 4+33.3. CONTRACTOR'S CONSTRUCTION METHODS SHALL BE SUCH THAT WILL PROVIDE CONTINUOUS FLOW OF SEWAGE DURING CONSTRUCTION OF THIS PROJECT. CONTRACTOR'S METHOD OF HANDLING SEWAGE FLOW SHALL MEET WITH THE APPROVAL OF THE ENGINEER.

