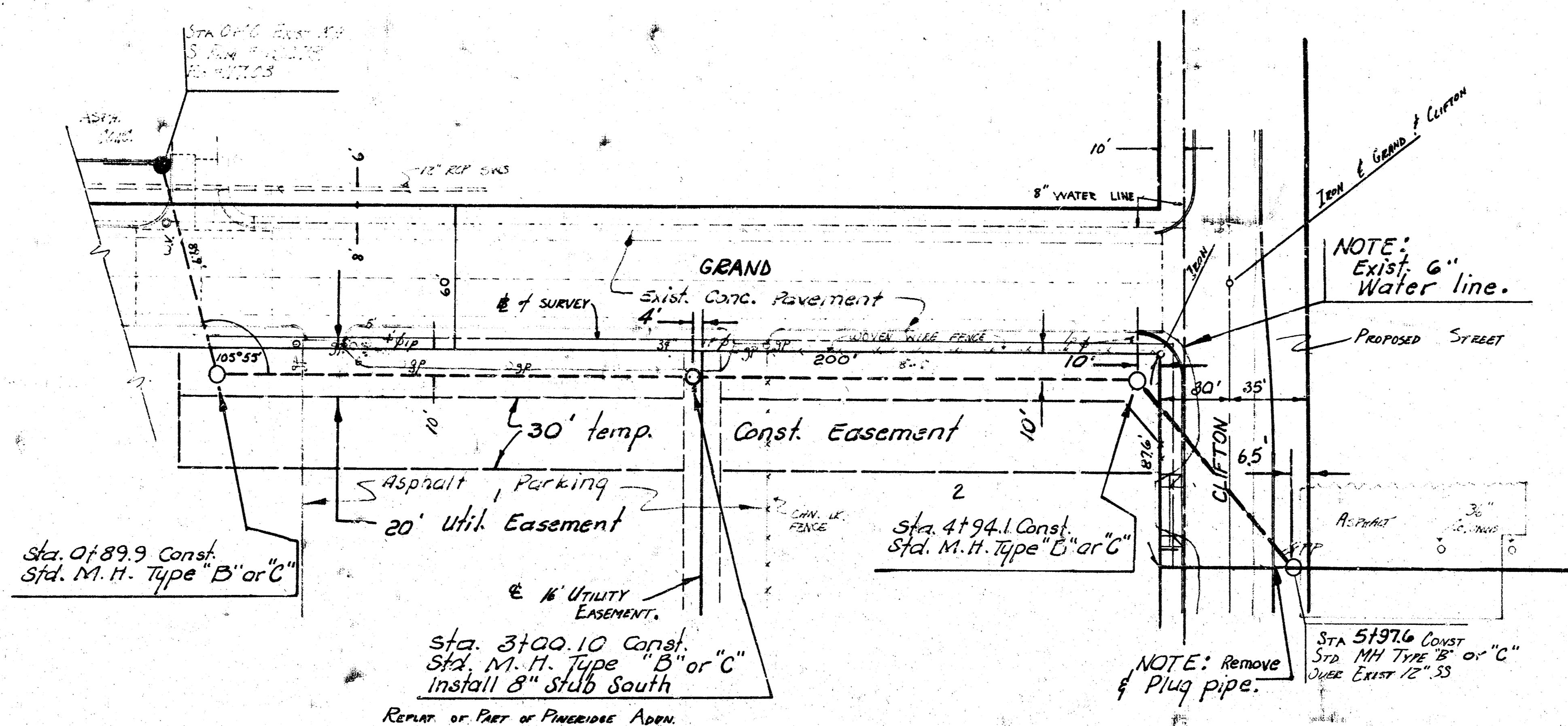
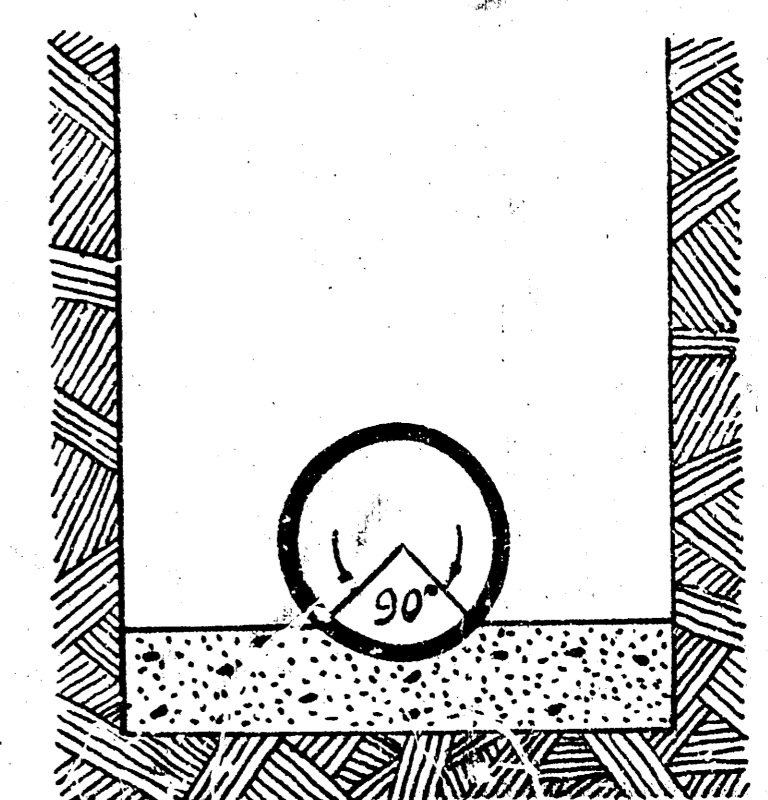


NOTE: Contractor to contact
Monsieur Herle
Phone No. 682-1415
prior to construction.

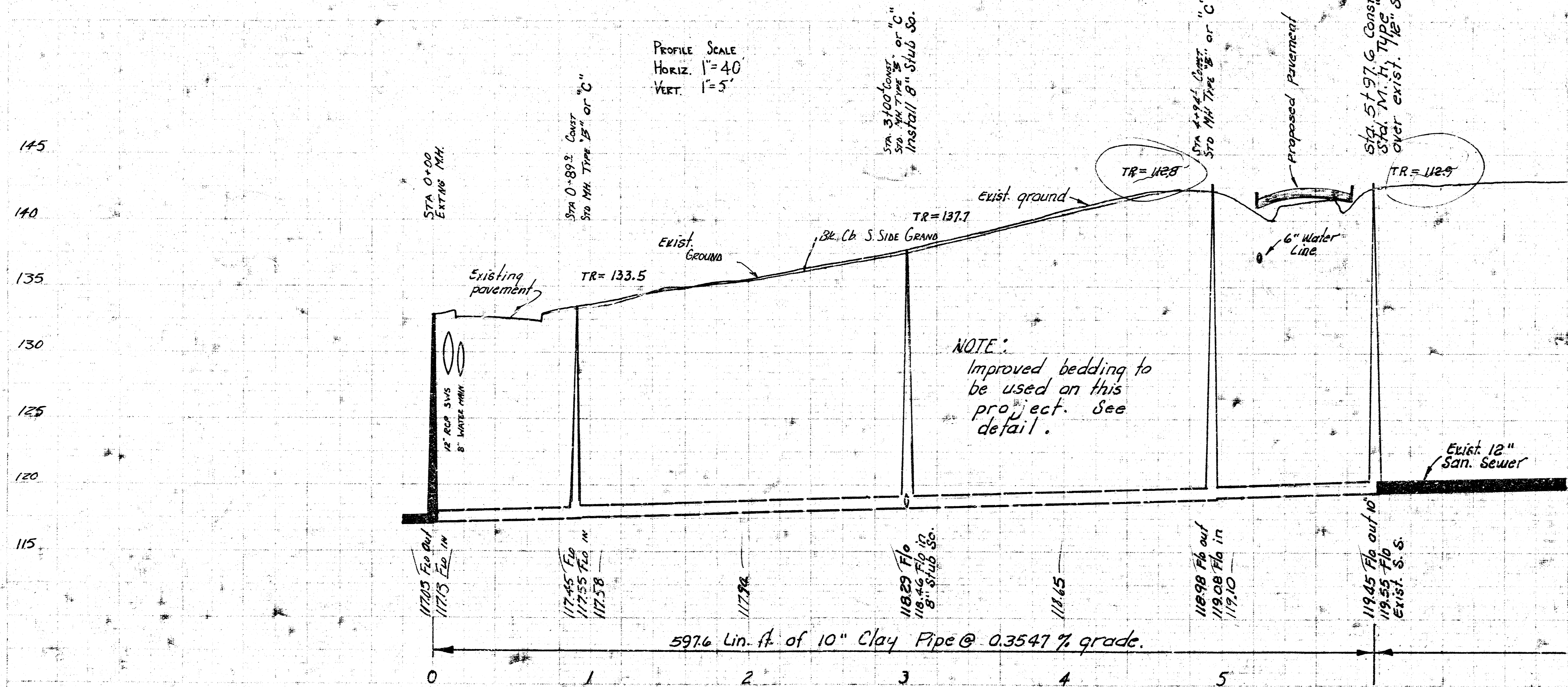


BM 14329 "O" ON W CURB CLIFTON
77' N of E GRAND.

NOTE: ALL SEWER SHALL BE CONSTRUCTED
WITH IMPROVED BEDDING.



IMPROVED BEDDING
Minimum depth of granular
embedment shall be
one-fourth pipe diameter but
in no case less than 4\"/>



LAT. B, DISTRICT 4, S. S. NO. 12
CITY OF WICHITA, KANSAS
R. W. LINN — CITY ENGINEER
APRIL 1975 PROJECT NO. DBKL 574098

