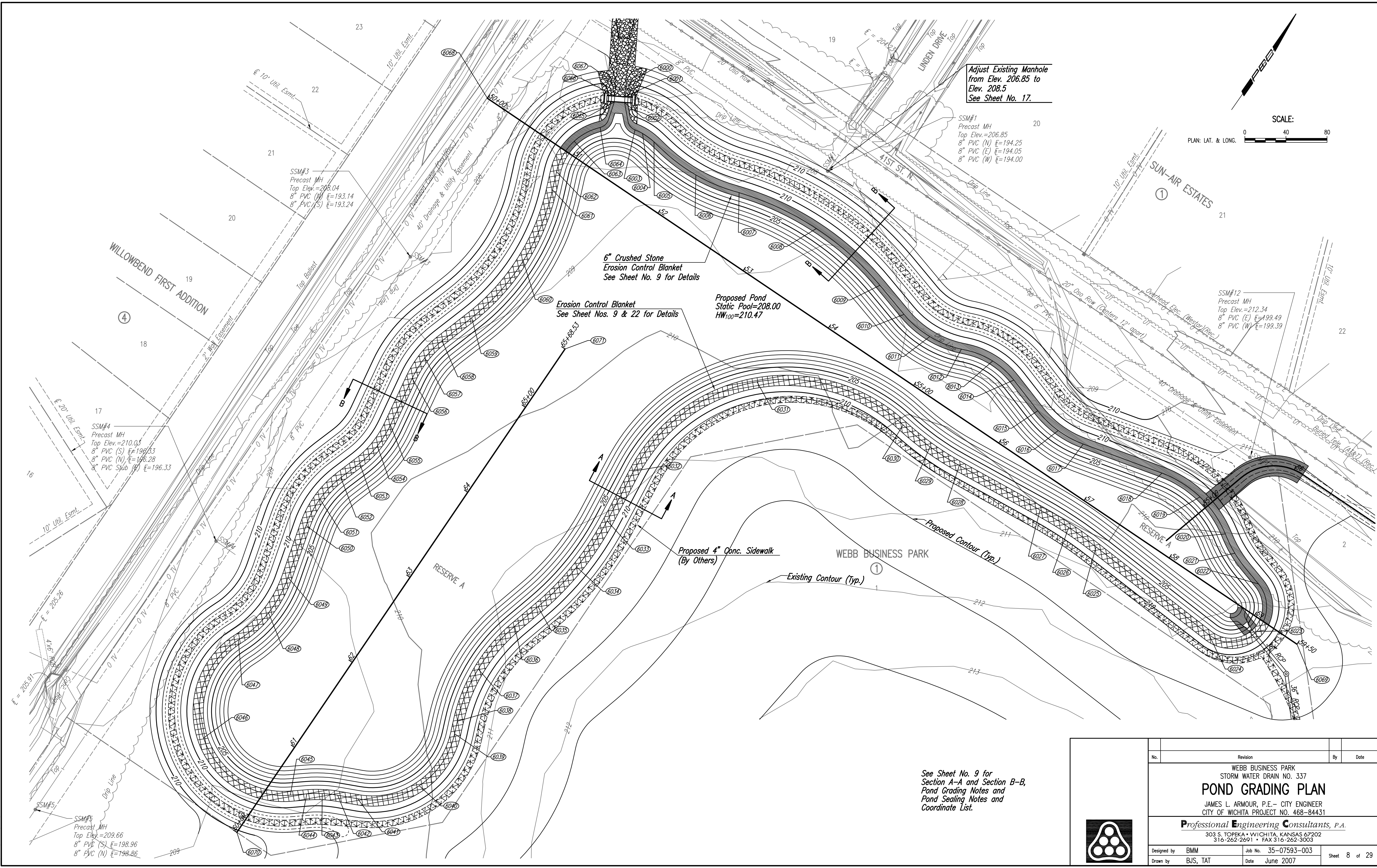
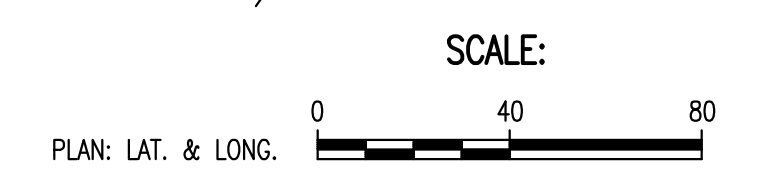


Saved: 03-20-2008 09:54:06 AM  
 Plot Scale: 1" = 40'  
 03/20/07 07:59:33 003.07593-003-C-POND



Adjust Existing Manhole  
 from Elev. 206.85 to  
 Elev. 208.5  
 See Sheet No. 17.



SSM#3  
 Precast MH  
 Top Elev. = 208.04  
 8" PVC (N)  $\bar{E}$  = 193.14  
 8" PVC (S)  $\bar{E}$  = 193.24

SSM#1  
 Precast MH  
 Top Elev. = 206.85  
 8" PVC (N)  $\bar{E}$  = 194.25  
 8" PVC (E)  $\bar{E}$  = 194.05  
 8" PVC (W)  $\bar{E}$  = 194.00

SSM#12  
 Precast MH  
 Top Elev. = 212.34  
 8" PVC (E)  $\bar{E}$  = 199.49  
 8" PVC (W)  $\bar{E}$  = 199.39

SSM#4  
 Precast MH  
 Top Elev. = 210.03  
 8" PVC (S)  $\bar{E}$  = 196.33  
 8" PVC (N)  $\bar{E}$  = 196.28  
 8" PVC (W)  $\bar{E}$  = 196.33

SSM#5  
 Precast MH  
 Top Elev. = 209.66  
 8" PVC (S)  $\bar{E}$  = 198.96  
 8" PVC (N)  $\bar{E}$  = 198.86

6" Crushed Stone  
 Erosion Control Blanket  
 See Sheet No. 9 for Details

Erosion Control Blanket  
 See Sheet Nos. 9 & 22 for Details

Proposed Pond  
 Static Pool = 208.00  
 HW<sub>100</sub> = 210.47

Proposed 4" Conc. Sidewalk  
 (By Others)

See Sheet No. 9 for  
 Section A-A and Section B-B,  
 Pond Grading Notes and  
 Pond Sealing Notes and  
 Coordinate List.

No.	Revision	By	Date
	WEBB BUSINESS PARK STORM WATER DRAIN NO. 337 <b>POND GRADING PLAN</b> JAMES L. ARMOUR, P.E. - CITY ENGINEER CITY OF WICHITA PROJECT NO. 468-84431 <b>Professional Engineering Consultants, P.A.</b> 303 S. TOPEKA • WICHITA, KANSAS 67202 316-262-2691 • FAX 316-262-3003		
Designed by	BMM	Job No.	35-07593-003
Drawn by	BJS, TAT	Date	June 2007

