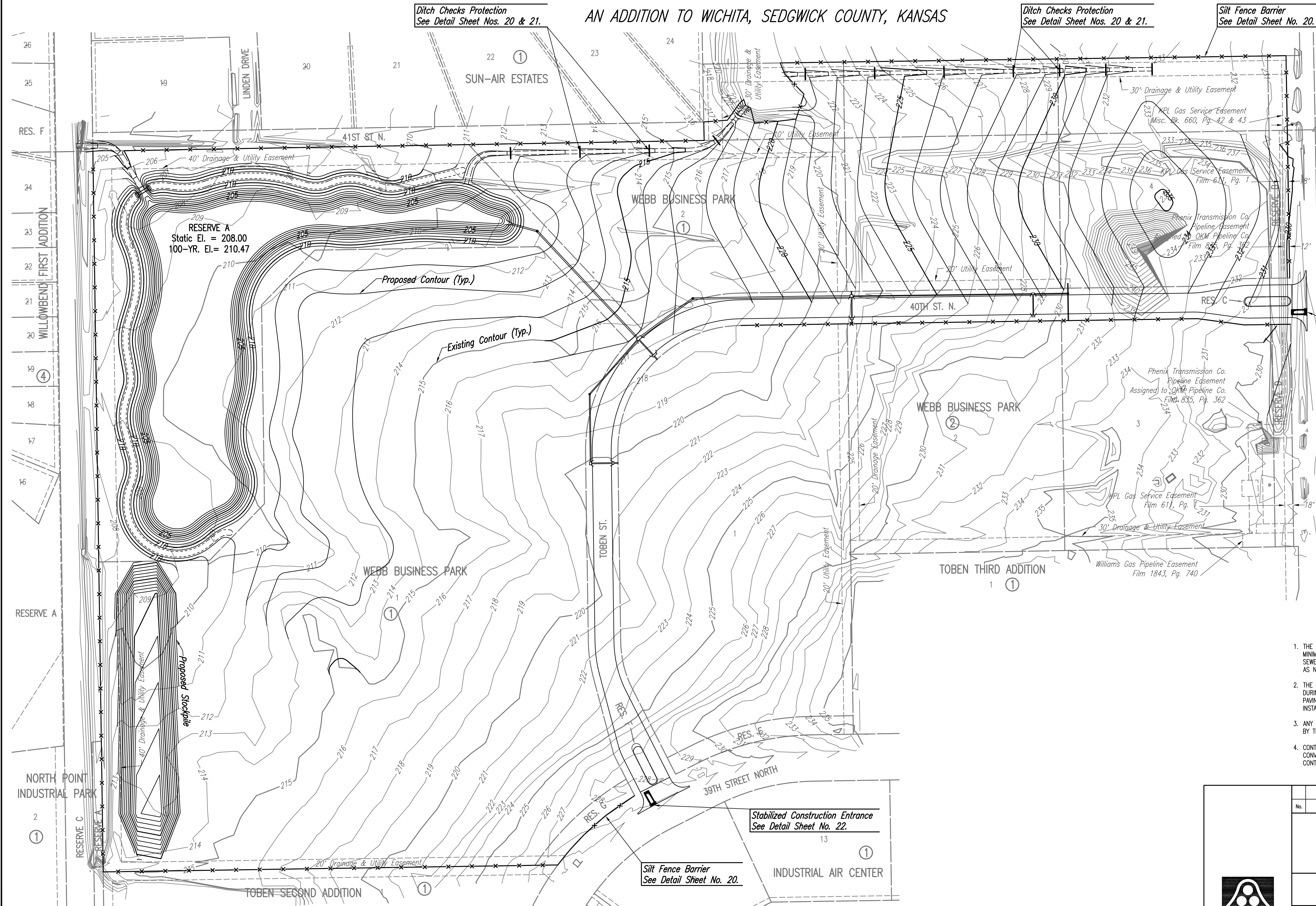


WEBB BUSINESS PARK

AN ADDITION TO WICHITA, SEDGWICK COUNTY, KANSAS



Stabilized Construction Entrance
See Detail Sheet No. 22.

- LEGEND**
- x— Silt Fence Barrier
 - x— Ditch Checks Protection

GENERAL NOTES

1. THE EROSION CONTROL DEVICES SHOWN ON THIS SHEET ARE CONSIDERED MINIMUM STANDARDS. WHENEVER SEDIMENT ENTERS THE STREETS, STORM SEWERS, DITCHES, OR PONDS, CONTRACTOR WILL INSTALL ADDITIONAL DEVICES, AS NEEDED, TO CORRECT THE PROBLEM.
2. THE EROSION CONTROL DEVICES SHOWN HEREON MUST BE IN PLACE AT ALL TIMES DURING CONSTRUCTION UNTIL SUCH TIME AS THE SITE IS REESTABLISHED WITH PAVING OR GRASS. TEMPORARY OR PERMANENT AND MULCH WILL BE INSTALLED WHEN EARTHWORK ACTIVITIES CEASE IN AN AREA FOR 14 DAYS OR MORE.
3. ANY MUD INADVERTENTLY TRACKED ONTO ANY STREET WILL BE CLEANED UP BY THE CONTRACTOR, AT THE END OF EACH DAY'S WORK.
4. CONTRACTOR TO FURNISH A TRUCK WASH-OUT PIT TO BE PLACED AT A CONVENIENT LOCATION THAT DOES NOT CONFLICT WITH CONSTRUCTION. CONTRACTOR SHALL CLEAN OUT AND BACKFILL PIT PRIOR TO FINAL INSPECTION.

Scaled 03-19-2008 1:55:38 PM by BJS
 Plot Scale 1:100 03-19-2008 4:17:13 PM
 Q:\2007\07593\003\07593-003-C-EROSION CONTROL PLAN

No.	Revision	By	Date
	WEBB BUSINESS PARK STORM WATER DRAIN NO. 337		
EROSION CONTROL PLAN			
JAMES L. ARMOUR, P.E. - CITY ENGINEER CITY OF WICHITA PROJECT NO. 468-84431			
Professional Engineering Consultants, P.A. 303 S. TOPEKA • WICHITA, KANSAS 67202 316-262-2691 • FAX 316-262-3003			
Designed by	BMM	Job No.	35-07593-003
Drawn by	BJS, TAT	Date	June 2007
			Sheet 18 of 29

