

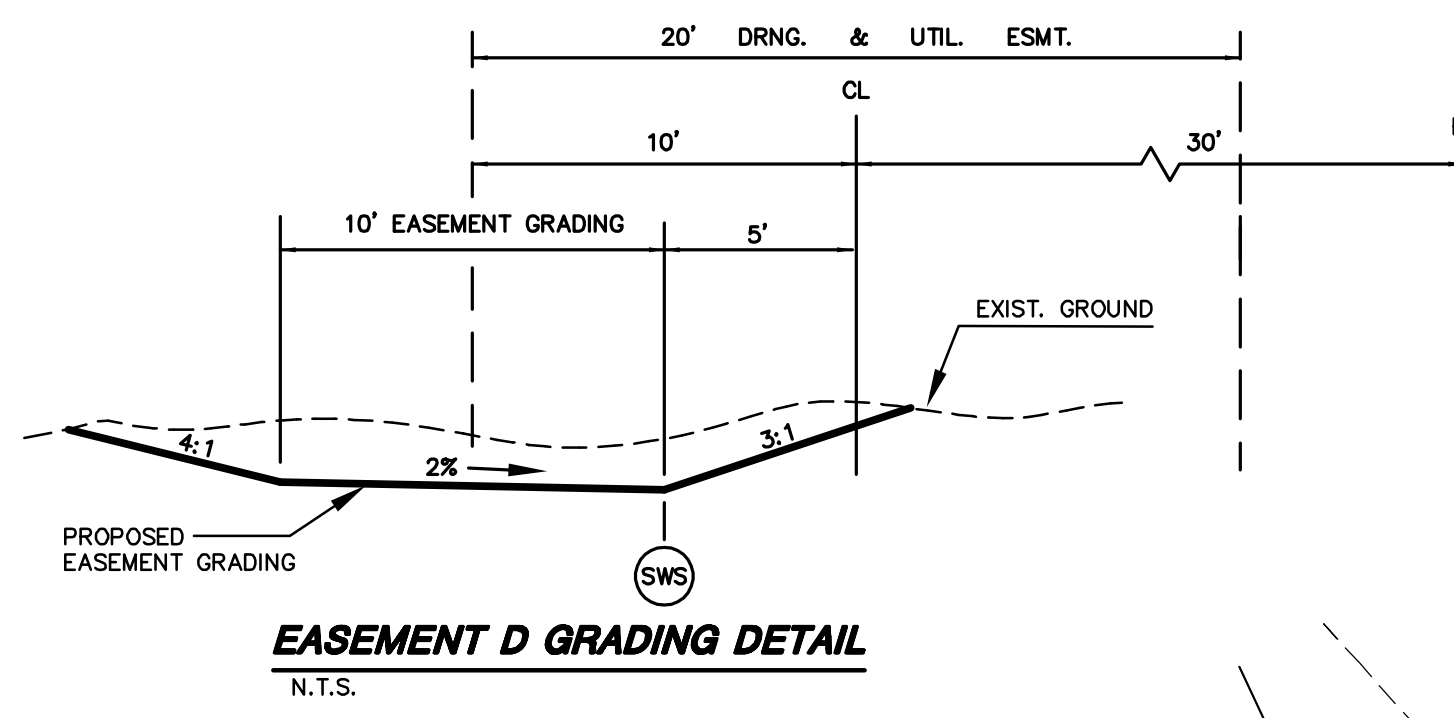
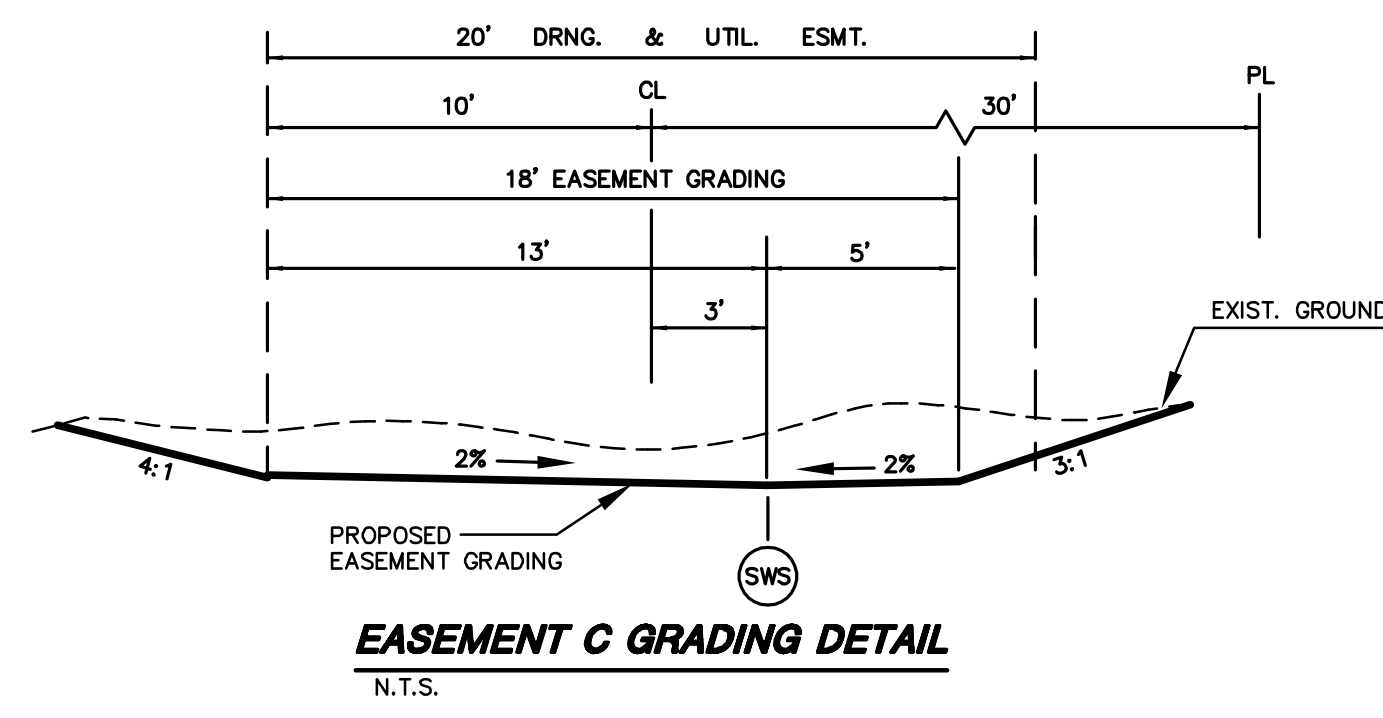
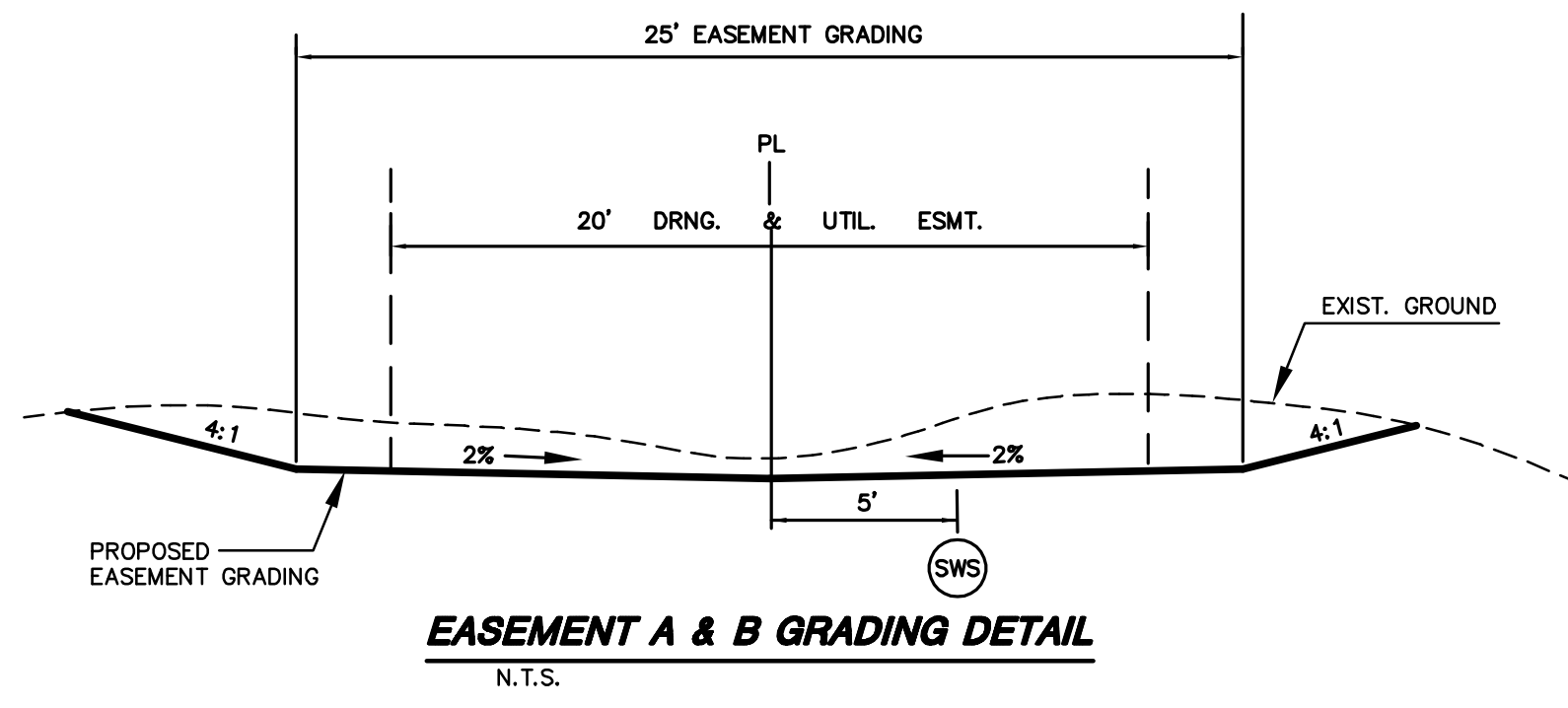
**PAVING PLANS  
COUNTRY HOLLOW ADDITION  
PHASE 2**

**EASEMENT GRADING**  
SHEET TITLE  
472-84351  
PROJECT NUMBER

DFL  
DESIGN BY  
KKL  
DRAWN BY  
GJA  
CHECKED BY

ISSUED  
March 2008  
REVISED

SHEET NO.  
**14 of 32**



**EASEMENT GRADING NOTES: \*\***

1. Easement Grading will be bid on a lump sum basis for grading the easements to the profile and elevations shown on the Easement Grading Plan (this sheet). Approximate quantities of earthwork for easement grading are shown below. These approximate quantities are given for information only. The Contractor should verify the quantities when preparing the proposal.

\*\*Graded widths and slopes may vary as approved by the Engineer to minimize conflict with existing trees.

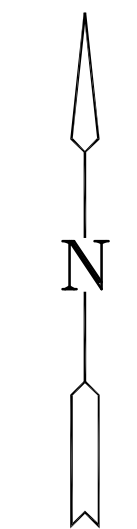
Cut 4250 C.Y. (Approximate)  
Fill 0 C.Y. (Approximate)

**GENERAL GRADING NOTES:**

1. Equipment and construction materials shall remain out of and away from tree driplines so as not to compact the root zone or damage trees. Chemical spill damage shall be prevented by filling gas tanks, cleaning tools and repairing equipment well outside tree protected root zones. Mixing trucks shall be rinsed off site. If a construction route or a proposed improvement occurs within a tree's protective root zone, it may be necessary, dependent upon the type of construction and equipment used, to install a root protection bridge or approved equivalent. This may be determined in the field at the direction of the owner's representative.

2. Topsoil shall be replaced at a depth of 6" in reserve areas that have been disturbed. Note that the finished grade indicates the surface elevation after the topsoil layer has been replaced.

Out 170 C.Y.  
Compacted Fill 900 C.Y.

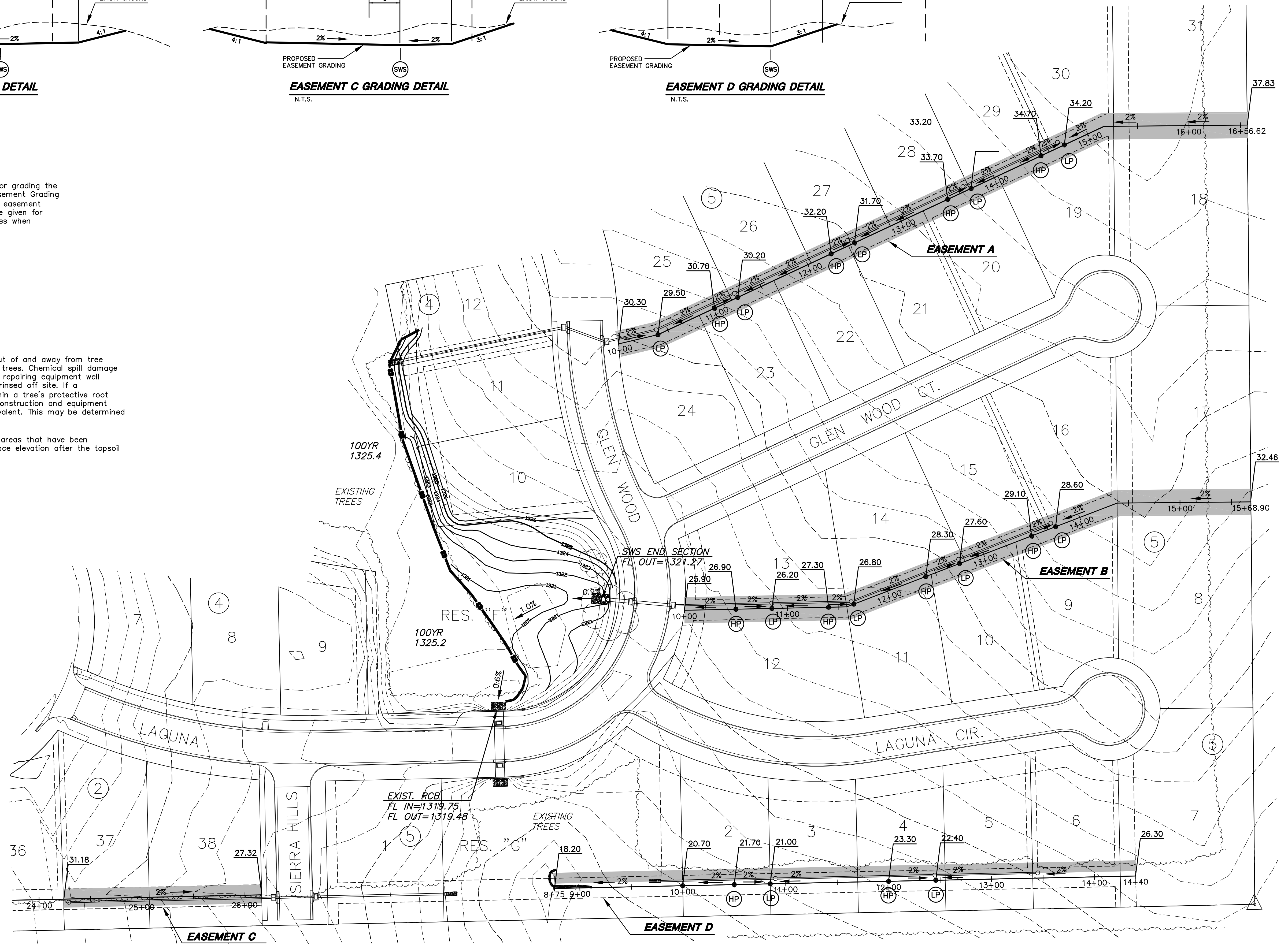


SCALE: 1" = 50'

**LEGEND**

- SILT FENCE (470 L.F.)
- EXISTING CONTOURS
- PROPOSED CONTOURS
- EASEMENT GRADING\*\*
- HIGH POINT
- LOW POINT

NOTE:  
RE-USE OR REPLACE EXISTING BACK YARD INLET FILTERS FROM PREVIOUS STORM SEWER PROJECT AS NEEDED. COST SUBSIDIARY TO PROJECT.



PLOTED: Friday, March 28, 2008 @ 10:54AM

J:\CIVIL\04429\DWG\PAV\PHASE 2\ESMT GRAD.DWG