

HORIZONTAL CONTROL POINTS		
C.P. NO. 1	N 4999.66 E 4990.03	"X" Cut (Found) in sidewalk (SE Cor. of Lot 1, Block 1)
C.P. NO. 2	N 4994.45 E 4022.33	"X" Cut (Found) in sidewalk (SW Cor. of Lot 1, Block 1)
C.P. NO. 3	N 5165.19 E 4448.28	5/8" Rebar w/RLS 1294 Cap (SW R/W Cor. of Holyoke, N. side of Lot.)

Sta. 0+00.00, Begin 6" FPSSL, 1-12"x6" Tapping Sleeve & Valve Assembly. (MJ Gate Valve) To be Furnished & Installed By City of Wichita Water Department. Contractor to be Responsible for \$1,400 Tapping Fee. Top Valve Box Elev=162.00 Contractor to Verify Depth & Location of Existing Main Prior to Installation & Notify Engineer of any Discrepancies. N 5012.88 E 4470.77

Proposed 2 1/2" Domestic Service Line with 2" Meter by Others.

FD Connection Located 1' Lt. of FP Line On Building To Be Installed By Others.

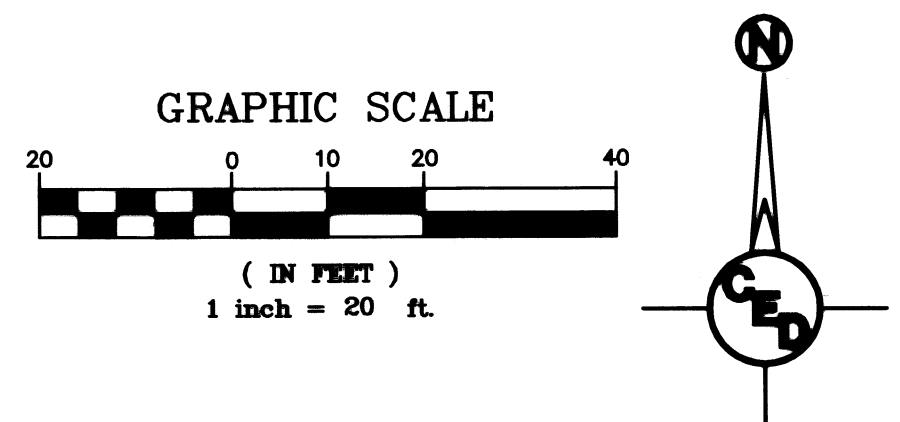
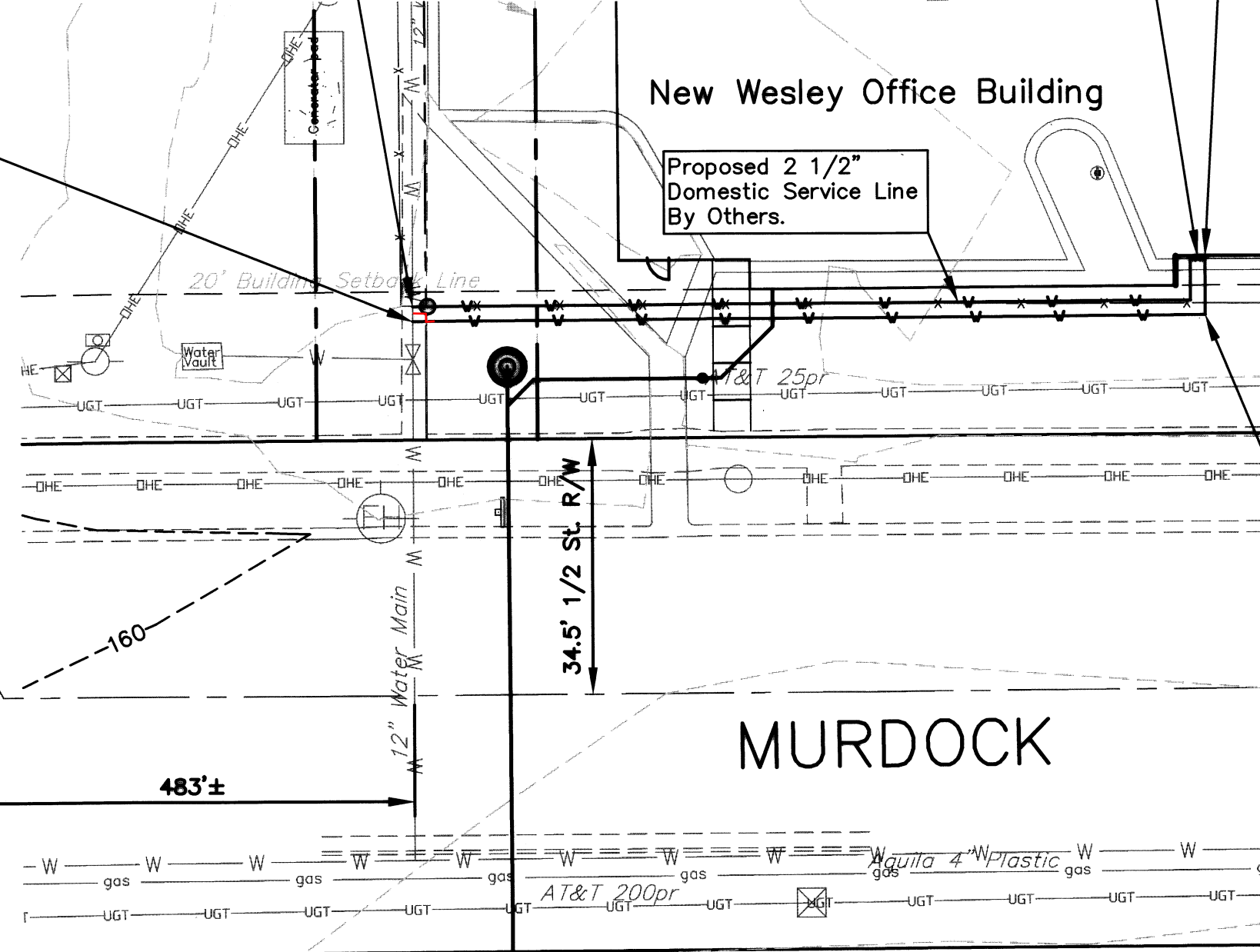
Sta. 1+15.17, FPSSL, Connect 6" Fire Protection Service Line to New Building Riser. (Backflow Preventer To Be Installed Inside Building By Others) N 5021.43 E 4577.96

Sta. 1+07.19, FPSSL, 1-6" CI CL MJ 90° Bend N 5013.45 E 4577.96

Because of bell in existing waterline, we moved 3' north
3' of 6" dcd
1-90 deg. MJ
2' of 6" dcd
1-90 deg. MJ
Back on line

HILLSIDE

MURDOCK



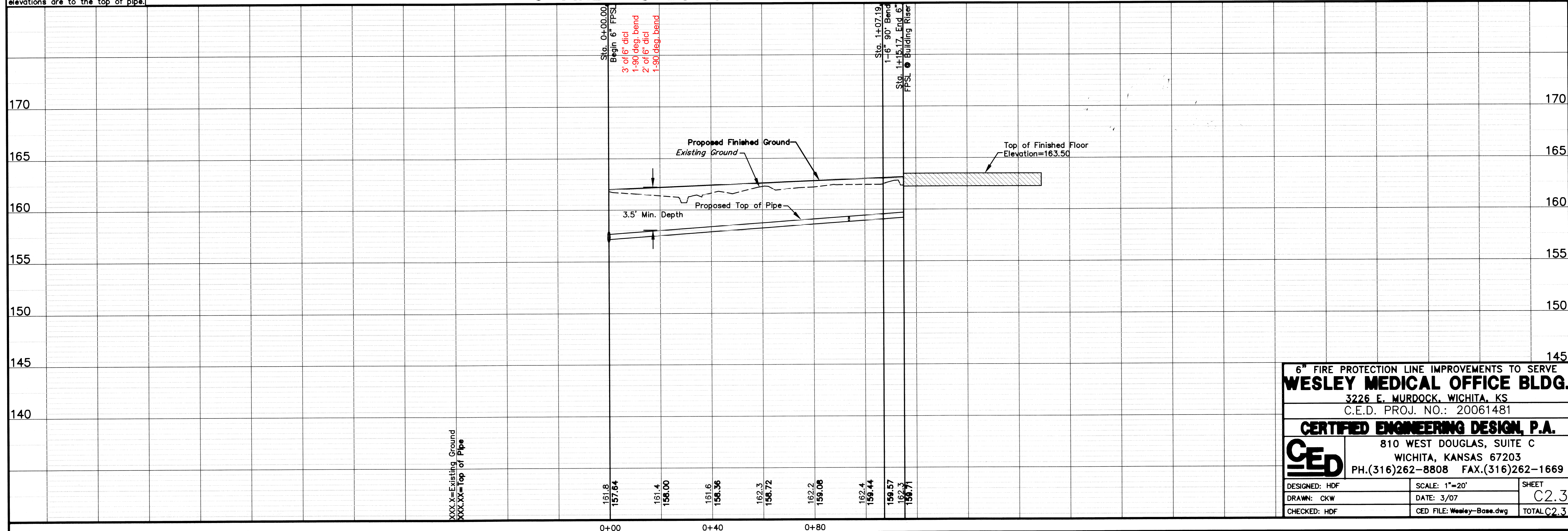
- Benchmark #1**
"□" Square cut on top of curb sw. corner of wheelchair ramp at the ne. corner of Orchard and Hillside. Elevation = 151.12 City of Wichita
- Benchmark #2**
"□" Square cut on top of curb ne. corner of wheelchair ramp at the se. corner of Orchard and Holyoke. Elevation = 153.00 City of Wichita
- Benchmark #3**
"□" Square cut on top of curb se. corner of wheelchair ramp at the nw. corner of Murdock and Vasser. Elevation = 153.00 City of Wichita

UTILITIES SHOWN REPRESENT THE BEST INFORMATION AVAILABLE FOR DESIGN. ADDITIONAL UTILITIES MAY BE PRESENT ON THIS PROJECT. THE CONTRACTOR SHALL BE RESPONSIBLE FOR DETERMINING THE EXACT LOCATION, DEPTH AND SIZE OF ALL UNDERGROUND UTILITIES PRIOR TO CONSTRUCTION. THE CONTRACTOR SHALL BE LIABLE FOR ANY DAMAGE CAUSED BY THE FAILURE TO DO SO.

DISCLAIMER:
TOPOGRAPHIC SURVEY USED IN PREPARING PLANS WAS PROVIDED BY ARROWHEAD LAND SURVEYING, 13110 E. MAPLE GROVE ROAD, MT. HOPE, KS 67108 (316-445-2221). ENGINEER DOES NOT GUARANTEE SURVEY ELEVATIONS FOR ACCURACY. CONTRACTOR SHALL VERIFY ELEVATIONS AND NOTIFY ENGINEER OF ANY DISCREPANCIES.

Unless otherwise noted, proposed elevations are to the top of pipe.

6" FIRE PROTECTION LINE IMPROVEMENTS



6" FIRE PROTECTION LINE IMPROVEMENTS TO SERVE		
WESLEY MEDICAL OFFICE BLDG.		
3226 E. MURDOCK, WICHITA, KS		
C.E.D. PROJ. NO.: 20061481		
CERTIFIED ENGINEERING DESIGN, P.A.		
810 WEST DOUGLAS, SUITE C		
WICHITA, KANSAS 67203		
PH.(316)262-8808 FAX.(316)262-1669		
DESIGNED: HDF	SCALE: 1"=20'	SHEET
DRAWN: CKW	DATE: 3/07	C2.3
CHECKED: HDF	CEI FILE: Wesley-Bass.dwg	TOTAL C2.3