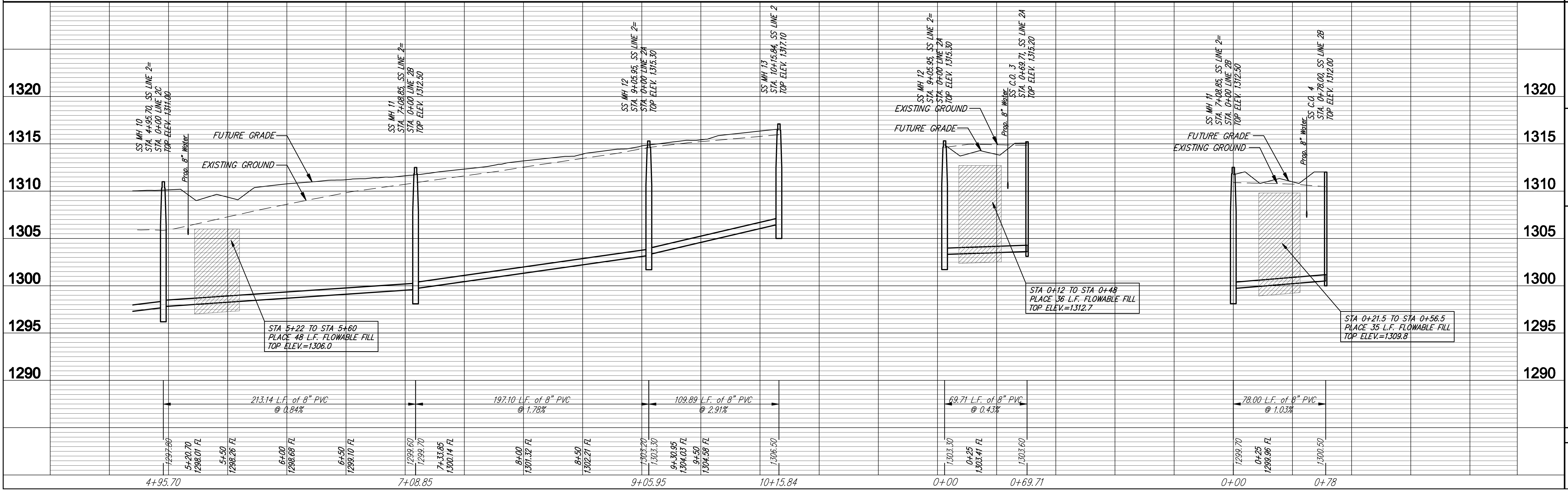


SEWER SERVICE TABLE

| NUMBER | TYPE               | LOCATION |           |          |                   | FOR INFORMATION ONLY       |          |
|--------|--------------------|----------|-----------|----------|-------------------|----------------------------|----------|
|        |                    | LOT NO.  | BLOCK NO. | LINE NO. | STATION DIRECTION | APPROXIMATE LENGTH 4" PIPE | VERTICAL |
| 16     | Manhole Stub       | 6        | 3         | 2        | 7+08.85           | 8'                         | 10'      |
| 17     | Manhole Stub       | 7        | 3         | 2        | 9+05.95           | 8'                         | 10'      |
| 18     | 8" X 4" Saddle Tee | 8        | 3         | 2        | 10+11             | 8'                         | 10'      |
| 19     | 8" X 4" Double Wye | 5        | 2         | 2A       | 0+69.71/R         | 8'                         | 10'      |
| 20     | 8" X 4" Double Wye | 4        | 2         | 2A       | 0+69.71/L         | 8'                         | 10'      |
| 21     | 8" X 4" Double Wye | 3        | 2         | 2B       | 0+78/R            | 8'                         | 10'      |
| 22     | 8" X 4" Double Wye | 2        | 2         | 2B       | 0+78/L            | 8'                         | 10'      |

NOTE: Vertical Riser Pipe shall be extended to 2' minimum above ground water elevation and 4' maximum below proposed ground elevation.

SEWER TO BE BACKFILLED WITH SAND AND FLUSHED AND VIBRATED PER CTY OF WICHITA STANDARD SPECIFICATIONS FROM STA. 4+96 TO STA. 5+22 AND 5+60 TO STA. 10+15 LINE 2. SUITABILITY OF EXCAVATED SAND FOR USE AS BACKFILL WILL BE DETERMINED BY THE ENGINEER.



**Rugles & Decker, P.A.**  
 Engineering & Surveying  
 1000 S. W. 10th St., Suite 100  
 Topeka, KS 66604  
 Phone: 785-233-1111  
 Fax: 785-233-1112  
 Email: info@ruglesanddecker.com

PROJECT NUMBER: 468-84480  
 DRAWING TITLE: 05 Line 2 & 2a & 2b  
 DATE: Jan. 23, 2008  
 EJB  
 AML  
 UNITY

**CAMBRIA ADDITION  
 SANITARY SEWER  
 WICHITA, KANSAS**

18