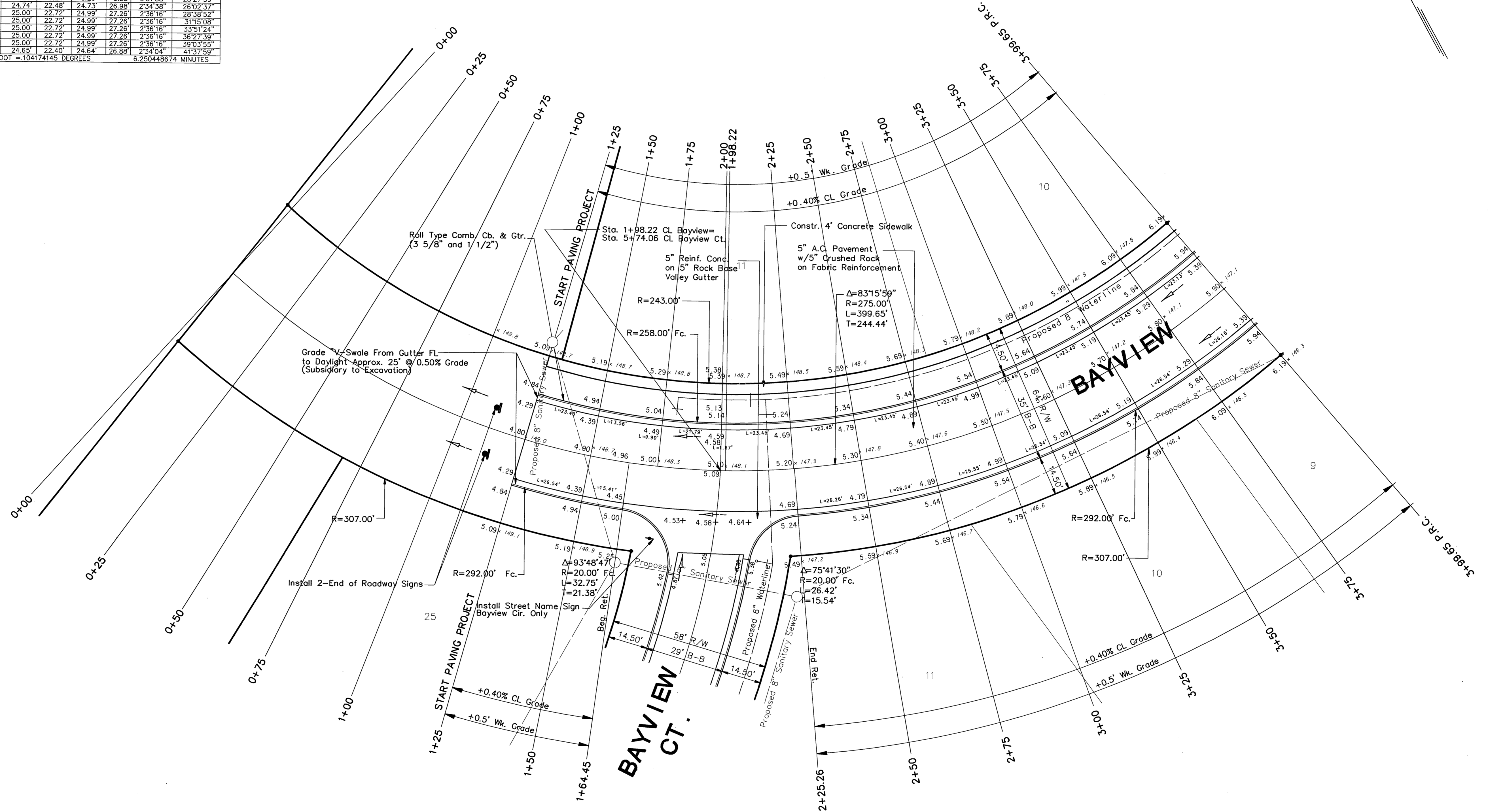
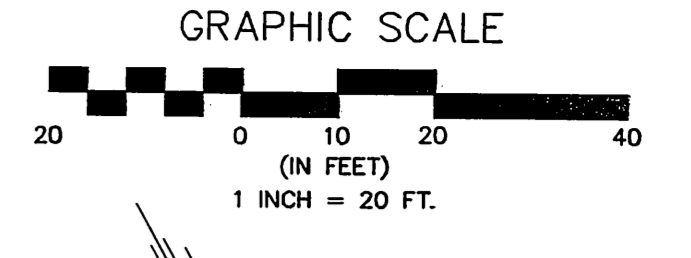


$\Delta = 83^{\circ}15'59''$      $L = 399.65'$      $R = 275.00'$      $T = 244.44'$

STATION	CL ARC	CHORD LENGTH		DEFLECTION		TOTAL DEFLECTION
		R' LT.	R' RT.	R' LT.	R' RT.	
0+00.00 P.C.						
0+25.00	25.00'	22.72'	24.99'	27.26'	2'36"16"	2'36"16"
0+50.00	25.00'	22.72'	24.99'	27.26'	2'36"16"	5'12"31"
0+75.00	25.00'	22.72'	24.99'	27.26'	2'36"16"	7'48"47"
1+00.00	25.00'	22.72'	24.99'	27.26'	2'36"16"	10'25"03"
1+25.00	25.00'	22.72'	24.99'	27.26'	2'36"16"	13'01"18"
1+50.00	25.00'	22.72'	24.99'	27.26'	2'36"16"	15'37"34"
1+75.00	14.45'	13.13'	14.45'	15.76'	1'50"19"	17'07"53"
1+98.22	10.55'	9.89'	10.55'	11.51'	1'05"57"	18'13"50"
2+00.00	23.22'	21.10'	23.21'	25.32'	2'25"08"	20'38"58"
2+25.00	1.78'	1.62'	1.78'	1.94'	0'11"08"	20'50"05"
2+25.00	25.00'	22.72'	24.99'	27.26'	2'36"16"	23'26"21"
2+50.00	0.26'	0.24'	0.26'	0.28'	0'01"38"	23'27"59"
2+50.00	24.74'	22.48'	24.73'	26.98'	2'34"38"	26'02"37"
2+75.00	25.00'	22.72'	24.99'	27.26'	2'36"16"	28'38"52"
3+00.00	25.00'	22.72'	24.99'	27.26'	2'36"16"	31'15"08"
3+25.00	25.00'	22.72'	24.99'	27.26'	2'36"16"	33'51"24"
3+50.00	25.00'	22.72'	24.99'	27.26'	2'36"16"	36'27"39"
3+75.00	25.00'	22.72'	24.99'	27.26'	2'36"16"	39'03"55"
3+99.65 P.T.	24.65'	22.40'	24.64'	26.88'	2'34"04"	41'37"59"

DEFLECTION/FOOT = 104174145 DEGREES    6.250448674 MINUTES



<b>FINAL</b> Designed By: G. Miles Drawn By: S. Schmidt Pce. Job No.: 1665B Date: June 1998	<b>POE &amp; ASSOCIATES OF KANSAS, INC.</b> CONSULTING ENGINEERS 5940 E. Central, Suite 200 • Wichita, KS 67208 • 316/855-4444	<b>CITY OF WICHITA, KANSAS</b> MICHAEL E. LINDBAK, P.E. - CITY ENGINEER Project No. 465-82879 Index Code 764654	No. <input type="checkbox"/> Date <input type="checkbox"/> By <input type="checkbox"/> Approved <input type="checkbox"/> Revision <input type="checkbox"/>
			STREET IMPROVEMENTS MOORINGS NORTH ADDITION

F:\APPS\DCAP\665B\base.dwg Wed Jul 01 09:03:30 1998 Steve Schmidt