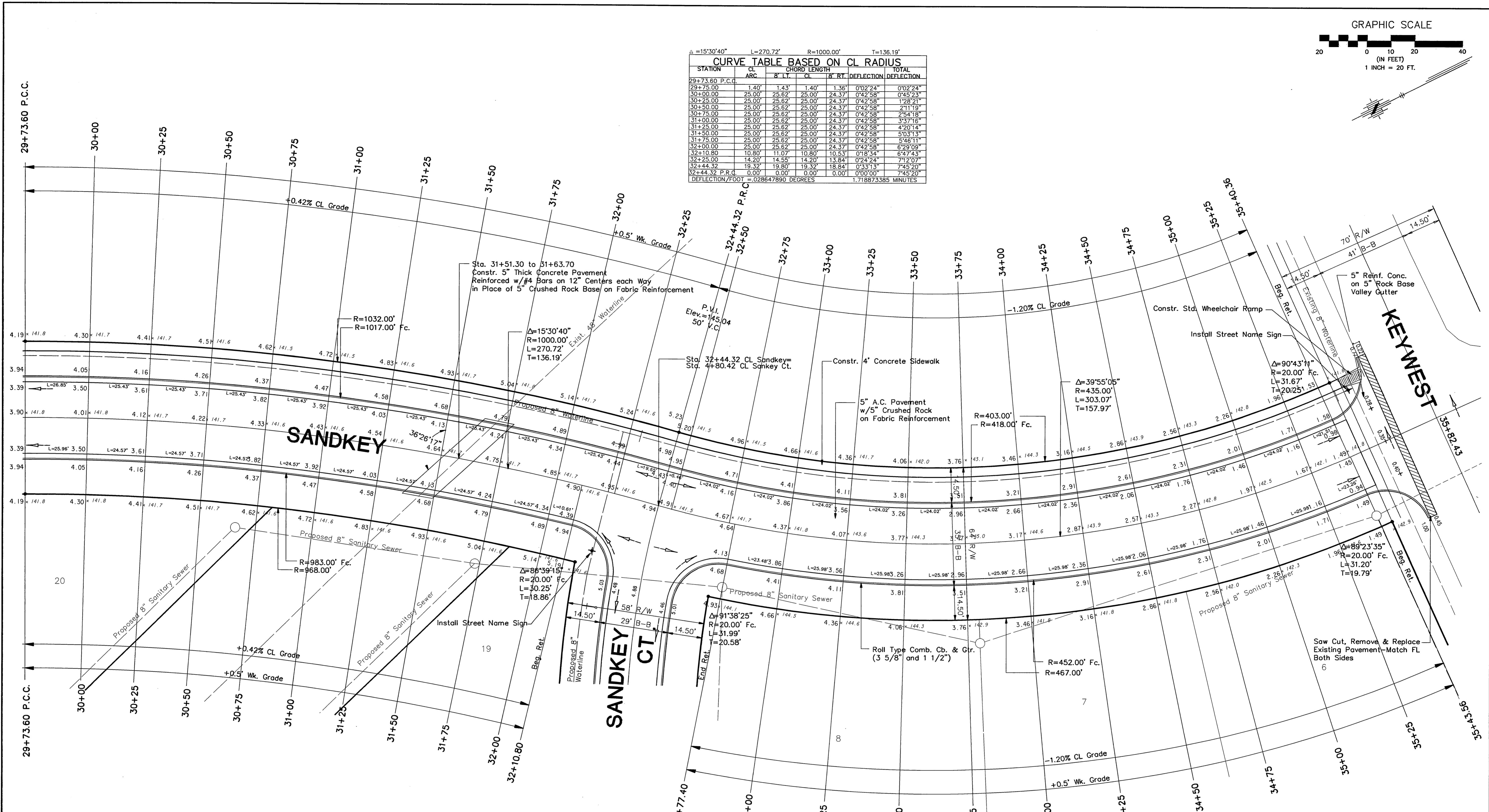


Δ=15°30'40" L=270.72' R=1000.00' T=136.19'

STATION	CL ARC	CHORD LENGTH		DEFLECTION		TOTAL
		B' LT.	CL	B' RT.	DEFLECTION	DEFLECTION
29+73.60 P.C.C.						
29+75.00	1.40'	1.43'	1.40'	1.36'	0°02'24"	0°02'24"
30+00.00	25.00'	25.62'	25.00'	24.37'	0°42'58"	0°45'22"
30+25.00	25.00'	25.62'	25.00'	24.37'	0°42'58"	1°28'21"
30+50.00	25.00'	25.62'	25.00'	24.37'	0°42'58"	2°11'19"
30+75.00	25.00'	25.62'	25.00'	24.37'	0°42'58"	2°54'18"
31+00.00	25.00'	25.62'	25.00'	24.37'	0°42'58"	3°37'16"
31+25.00	25.00'	25.62'	25.00'	24.37'	0°42'58"	4°20'14"
31+50.00	25.00'	25.62'	25.00'	24.37'	0°42'58"	5°03'13"
31+75.00	25.00'	25.62'	25.00'	24.37'	0°42'58"	5°46'11"
32+00.00	25.00'	25.62'	25.00'	24.37'	0°42'58"	6°29'09"
32+10.80	10.80'	11.07'	10.80'	10.53'	0°18'34"	6°47'43"
32+25.00	14.20'	14.55'	14.20'	13.84'	0°24'24"	7°12'07"
32+44.32	19.32'	19.80'	19.32'	18.84'	0°33'13"	7°45'20"
32+44.32 P.R.C.	0.00'	0.00'	0.00'	0.00'	0°00'00"	7°45'20"
DEFLECTION/FOOT = 0.28647890 DEGREES						1.718873385 MINUTES

Δ=39°55'05" L=303.07' R=435.00' T=157.97'

STATION	CL ARC	CHORD LENGTH		DEFLECTION		TOTAL
		B' LT.	CL	B' RT.	DEFLECTION	DEFLECTION
32+44.32 P.R.C.						
32+50.00	5.68'	5.35'	5.68'	6.01'	0°22'27"	0°22'27"
32+75.00	25.00'	23.56'	25.00'	26.43'	1°38'47"	2°01'14"
32+77.40	2.40'	2.26'	2.40'	2.54'	0°09'29"	2°10'43"
33+00.00	22.60'	21.30'	22.60'	23.90'	1°29'18"	3°40'01"
33+25.00	25.00'	23.56'	25.00'	26.43'	1°38'47"	5°18'48"
33+50.00	25.00'	23.56'	25.00'	26.43'	1°38'47"	6°57'35"
33+75.00	25.00'	23.56'	25.00'	26.43'	1°38'47"	8°36'22"
34+00.00	25.00'	23.56'	25.00'	26.43'	1°38'47"	10°15'10"
34+25.00	25.00'	23.56'	25.00'	26.43'	1°38'47"	11°53'57"
34+50.00	25.00'	23.56'	25.00'	26.43'	1°38'47"	13°32'44"
34+75.00	25.00'	23.56'	25.00'	26.43'	1°38'47"	15°11'31"
35+00.00	25.00'	23.56'	25.00'	26.43'	1°38'47"	16°50'18"
35+25.00	25.00'	23.56'	25.00'	26.43'	1°38'47"	18°29'05"
35+40.36	15.36'	14.48'	15.36'	16.24'	1°00'42"	19°29'47"
35+43.56	3.20'	3.02'	3.20'	3.38'	0°12'39"	19°42'26"
35+47.39 P.T.	3.83'	3.61'	3.83'	4.05'	0°15'07"	19°57'33"
DEFLECTION/FOOT = 0.65857218 DEGREES						3.951433070 MINUTES



F:\APPS\DATA\16658\16658.dwg Mod Jul 01 07:35:29 1998 Steve Schmidt

**FINAL**

Designed By: G. Miles  
 Drawn By: S. Schmidt  
 Pce Job No.: 16658  
 Date: June 1998

**POE & ASSOCIATES OF KANSAS, INC.**  
 CONSULTING ENGINEERS  
 3940 E. Central, Suite 200 Wichita, KS 67208 • 316/685-1114 • Fax 316/685-1444

**STREET IMPROVEMENTS**  
 MOORINGS NORTH ADDITION  
 CITY OF WICHITA, KANSAS  
 MICHAEL E. LINDBERGH, P.E. - CITY ENGINEER  
 Project No. 468-82879 Index Code 764654

Sheet 10 of 48