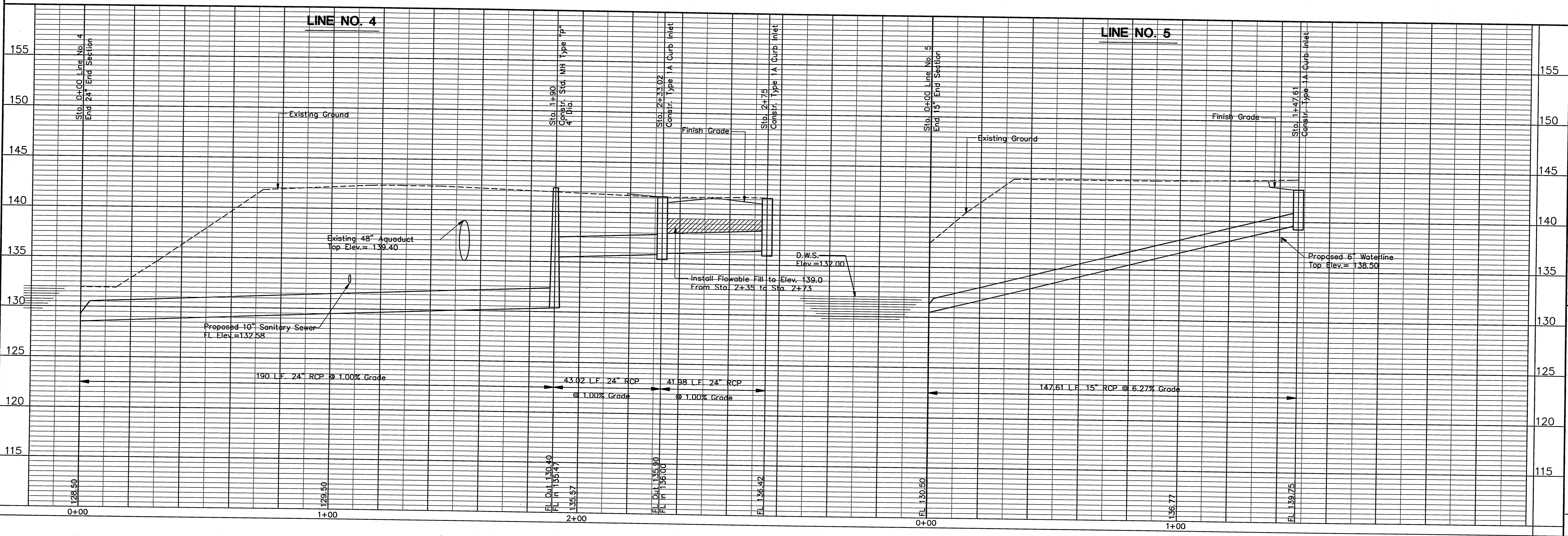
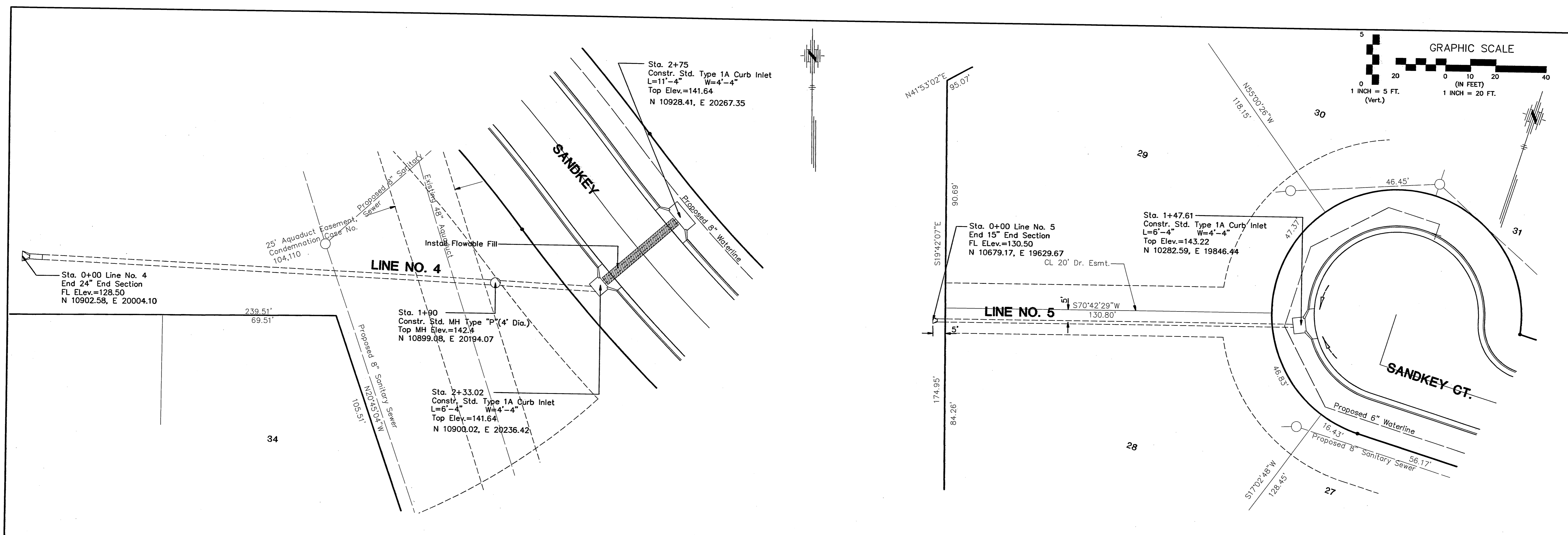


F:\APPS\DCAP\5668\base.dwg Wed Jul 01 07:29:56 1998 Steve Schmidt



MOORINGS NORTH ADDITION
STORM SEWER LINE NO. 4 & 5

CITY OF WICHITA, KANSAS
 MICHAEL E. LINDEBAK, P.E. - CITY ENGINEER
 Project No. 488-52879 Index Code 764654

POE & ASSOCIATES OF KANSAS, INC.
 CONSULTING ENGINEERS
 5940 E. Central, Suite 200 Wichita, KS 67208 316/685-4114 Fax 316/685-4444

FINAL

Designed By: G. Miles
 Drawn By: S. Schmidt
 P.O. Job No.: 1565B
 Date: June 1998

Sheet
 20 of 48