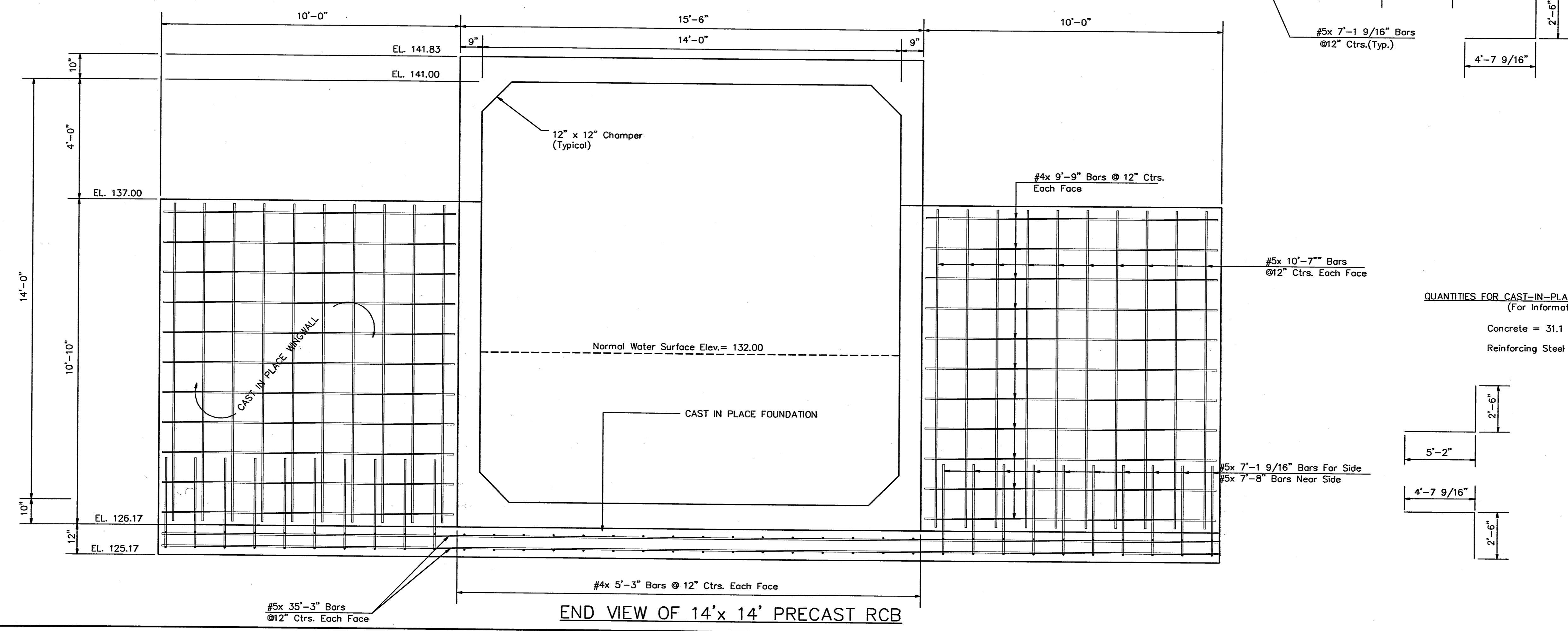


ELEVATION OF 14'x 14' PRECAST RCB



END VIEW OF 14'x 14' PRECAST RCB

QUANTITIES FOR CAST-IN-PLACE WALLS & FOUNDATIONS
(For Information Only)
Concrete = 31.1 C.Y.
Reinforcing Steel = 1,650 Lbs.

<p>POE & ASSOCIATES OF KANSAS, INC. CONSULTING ENGINEERS 5900 E. Central, Suite 200 • Wichita, KS 67208 • 316/685-4114 • Fax 316/685-444</p>	
<p>DESIGNED BY: G. Miles DRAWN BY: S. Schmidt POE JOB NO.: 1565B DATE: June 1998</p>	<p>14'x 14' PRECAST RCB DETAILS MOORINGS NORTH ADDITION CITY OF WICHITA, KANSAS MICHAEL E. LINDBERGH, P.E. - CITY ENGINEER Project No. 468-82777 Index Code</p>
<p>Sheet 22 of 48</p>	<p>FINAL</p>

F:\MPPS\DOCA\1565B\1565B.rvt 31.dwg Tue Jun 30 16:22:37 1998 Steve Schmidt