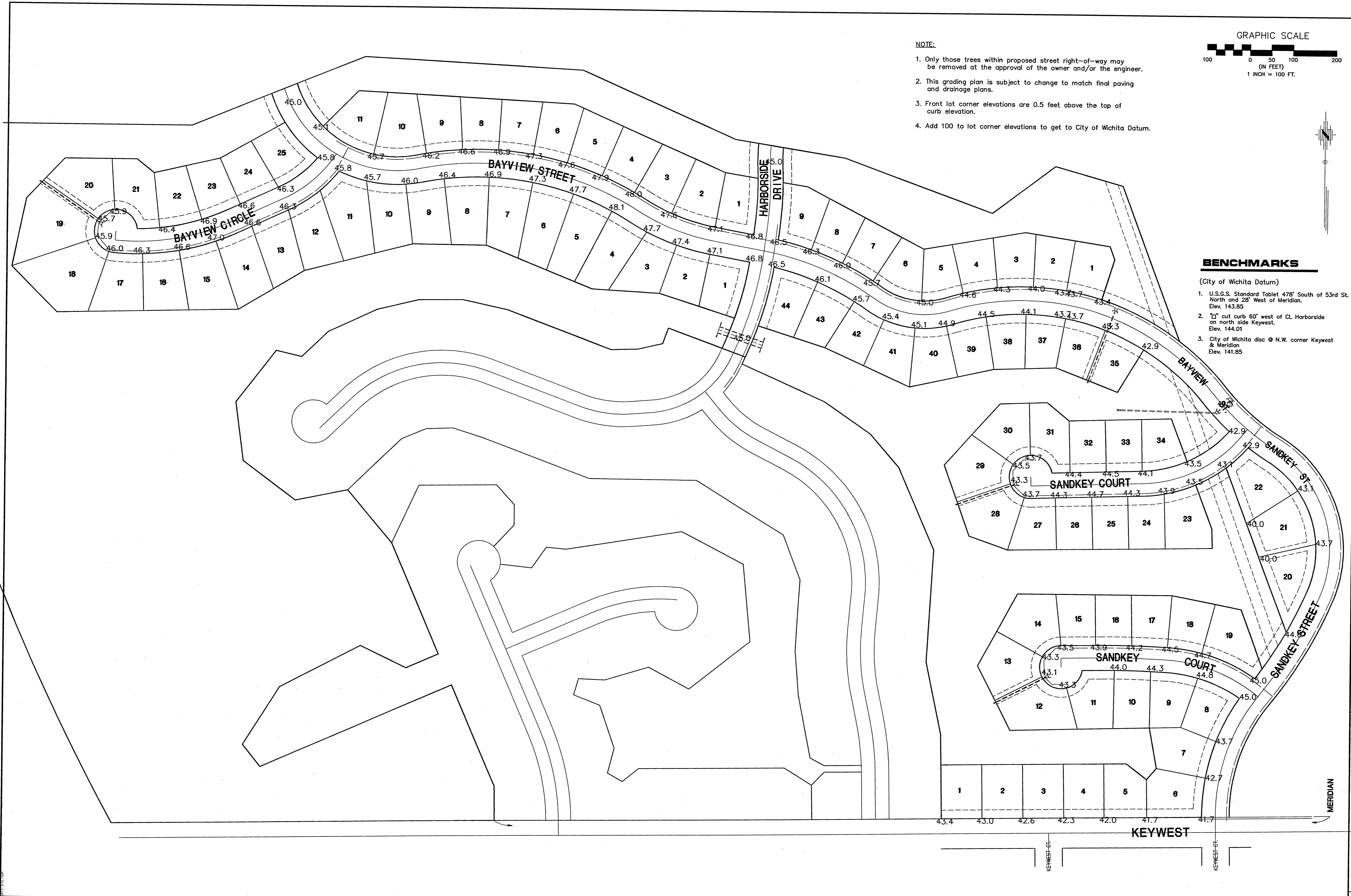
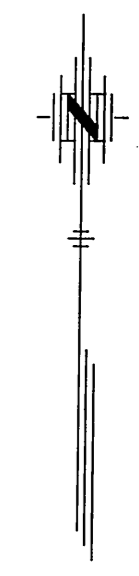
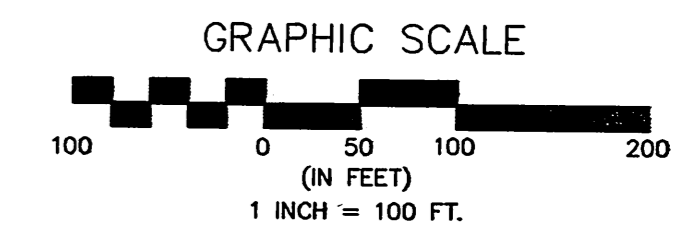


F:\APPS\DCAP\665B\base.dwg Wed Jul 01 10:43:25 1998 Steve Schmidt



- NOTE:**
1. Only those trees within proposed street right-of-way may be removed at the approval of the owner and/or the engineer.
  2. This grading plan is subject to change to match final paving and drainage plans.
  3. Front lot corner elevations are 0.5 feet above the top of curb elevation.
  4. Add 100 to lot corner elevations to get to City of Wichita Datum.



**BENCHMARKS**

- (City of Wichita Datum)
1. U.S.G.S. Standard Tablet 478' South of 53rd St. North and 28' West of Meridian. Elev. 143.85
  2. "T" cut curb 60' west of CL Harborside on north side Keywest. Elev. 144.01
  3. City of Wichita disc @ N.W. corner Keywest & Meridian. Elev. 141.85

No.	Date	By	Approved	Revision

MODRINGS NORTH ADDITION  
STREET IMPROVEMENTS  
LOT GRADING PLAN  
**CITY OF WICHITA, KANSAS**  
MICHAEL E. LINDEBAK, P.E. - CITY ENGINEER  
PROJECT NO. 468-82879 INDEX CODE 764654

**POE & ASSOCIATES OF KANSAS, INC.**  
CONSULTING ENGINEERS  
5940 E. Central, Suite 200 • Wichita, KS 67208 • 316/685-1114 • Fax 316/685-1444

**PE**

Designed By: G. Miles  
Drawn By: S. Schmidt  
Poe Job No.: 1665B  
Date: June 1998

**FINAL**

Sheet  
46 of 48