

WATER DISTRIBUTION SYSTEM

to serve

THE WOODS ADDITION - PHASE 1

CITY OF WICHITA, KANSAS

James L. Armour, P.E. City Engineer

Project Number
448-90163

O.C.A. Number
735400

Scale: 1" = 150'

BENCHMARKS

BM #1: City of Wichita Benchmark Disc, top of curb at west end of curb return, Northwest corner of intersection of City View and Sheriac Cir. in Shadow Woods Addition. Elev. = 1,386.66 NGVD29

BM #2: City of Wichita Benchmark Disc, Top of curb by fire hydrant at west end of curb return, Northwest corner of intersection of Sheriac Cir. and Sheriac Ct., South of SE corner of Lot 13, Block B, Shadow Woods Addition. Elev. = 1,392.11 NGVD29

SHEET INDEX

Title Sheet	1
Standard Water Details	2
Line 1	3-6
Line 2	7
Line 3	8
Erosion Control Plan	9
Erosion Control BMPs	10-13
Coordinate Sheet	14
Copy of Plat	15-16

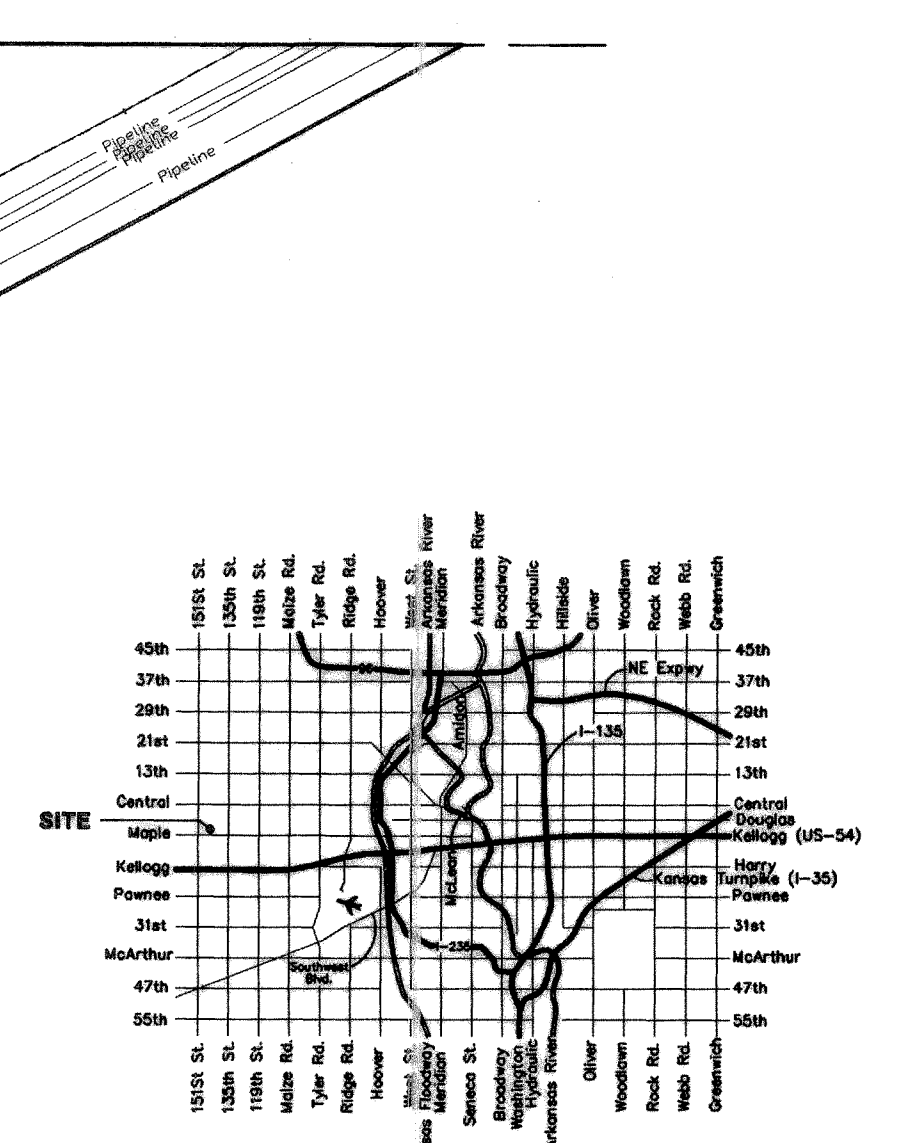
GENERAL NOTES:

- Contractor will be required to provide notice to utility companies a minimum of forty-eight (48) hours prior to any excavation, as follows:

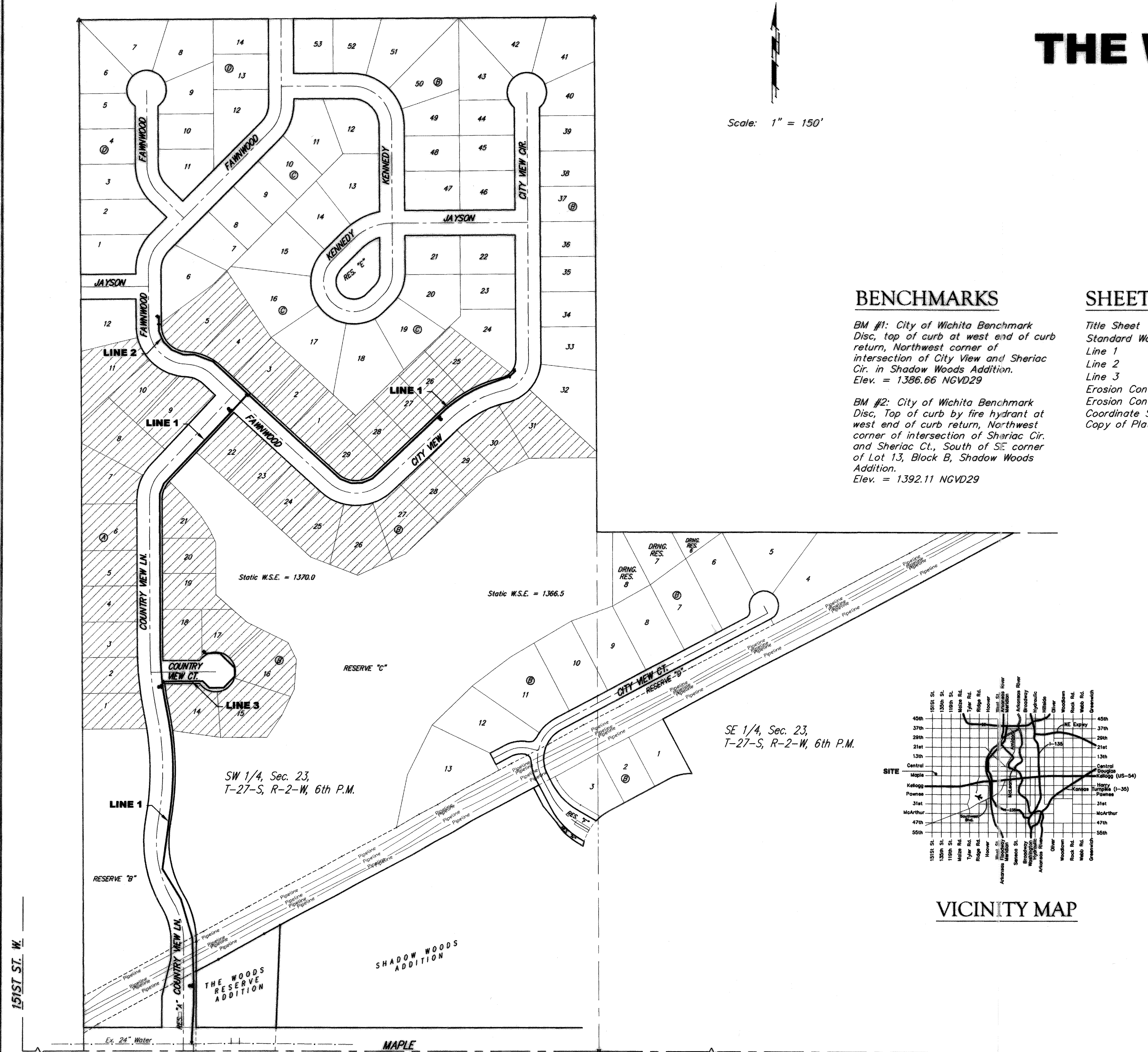
Kansas One-Call	687-2470
-----------------	----------

The Contractor must notify the following in case of an emergency:

Cox Communications	262-4270
Kansas Gas Service	1-888-482-4950
Wester Energy	383-8650
Aquila Energy	1-800-303-0357
AT&T	1-800-288-2020
City of Wichita Water Dept.	268-4563
City of Wichita Sewer Maint.	268-4024
City of Wichita Storm Sewer Maint.	268-4090
City of Wichita Traffic Maint.	268-4034
ConocoPhillips Pipeline Co.	1-877-267-2290
Southern Star Pipeline Co.	529-6600
Kinder-Morgan Pipeline Co.	1-888-644-5658
Quest Midstream Partners L.P.	1-800-467-2751
- Utility service lines, poles, valve boxes, meters, and etcetera are to be adjusted as necessary by others prior to construction unless the plans specifically call for their adjustment by the Contractor or unless the plans specifically identify a utility to be adjusted by its owner during construction. Existing utilities and their location, as shown on the plans, represent the best information obtainable for design. The Contractor will be required to work around existing utilities within the right-of-way which do not conflict with proposed construction.
- Rubble from the removal of miscellaneous structures and excess excavation which is to be wasted shall be disposed of on sites to be provided by the Contractor. These sites shall be approved by the Engineer as to suitability, appearance and site location. Locations, in the opinion of the Engineer, that will leave an unsightly appearance will not be approved. All disposal sites must be approved by the Kansas Department of Health and Environment. Material either stockpiled or disposed of in a flood plain would require a Kansas State Board of Agriculture permit. Any material dumped in waters of the United States or wetlands is subject to U.S. Corps. of Engineers permitting regulations. Any material buried or stockpiled beyond approved construction limits would require additional archaeological investigations unless buried in a previously approved borrow location.
- Trees and shrubs in public right-of-way which are in direct conflict with proposed new construction shall be removed by the Contractor ONLY with the Developer or Baughman Company approval. Trees and shrubs which are not in direct conflict with proposed new construction shall be saved and protected from damage.
- The Contractor shall give all property owners and/or tenants of developed property abutting the construction of this project a minimum of ten (10) days notice prior to start of construction.
- The Contractor shall be responsible for preserving property irons. The Contractor will be required to re-establish any property irons which are damaged or destroyed by his construction operations. Such irons shall be re-established by a licensed land surveyor in accordance with state laws.
- All existing and proposed erosion control measures including silt fencing, erosion control mat, straw bales, inlet barriers, and const. entrance shall be maintained throughout construction by the contractor and until project is accepted by the City of Wichita. The on-site engineer shall complete weekly reports on the status of erosion control measures. The contractor shall be required to comply with maintenance and/or replacement of erosion control measures as determined by the on-site engineer until project is accepted by City of Wichita.
- The Contractor shall adjust water valve boxes and fire hydrants as directed by the Engineer at the price bid for said adjustments. The Water Department shall field locate water valves one time during construction when requested by Contractor. It shall be the Contractor's responsibility to preserve such field locations during the construction process. Water valves, water valve boxes or fire hydrants damaged during construction shall be repaired by the Contractor at his own expense.
- All water mains and appurtenances shall be installed in accordance with City of Wichita, Kansas Standard Specifications for Water Main Installations No. 14533.
- Opening and closing of water valves shall be done slowly to prevent damage to the water distributions system from water hammer. All valves closed by the contractor must be reopened as new construction permits. Project inspector must ascertain that any valve closed by the Contractor is reopened. Contractor will be permitted to operate water valves only when the project inspector assigned to the project is present.
- Following construction, all disturbed areas shall be regraded and restored to preconstruction grades. Any excess earth remaining from excavation shall be wasted on-site at a location to be determined by the engineer.
- All areas disturbed during construction shall be seeded at 300 lbs./acre with Rye Grass immediately following construction in that area. Contractor shall prepare ground per City of Wichita Specifications. All costs associated with seeding shall be included in bid item "Project Seeding"
- The developer for this project is Jay Russell, (316) 722-2417
- No construction or equipment operation shall be allowed within ConocoPhillips, or Quest easements without first contacting a representative from the respective company. No work shall be allowed within these easements until permission has been granted by the pipeline companies and/or encroachment agreements have been signed. Contact engineer for status prior to construction.



VICINITY MAP



BENEFIT DISTRICT

Baughman

Baughman Company, P.A. 315 Ellis St. Wichita, KS 67211 P 316-262-7271 F 316-262-0149

ENGINEERING | SURVEYING | PLANNING | LANDSCAPE ARCHITECTURE

