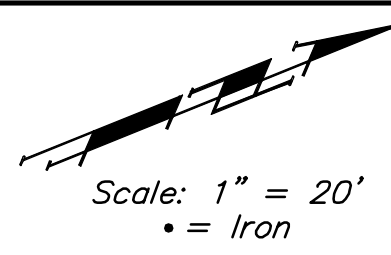


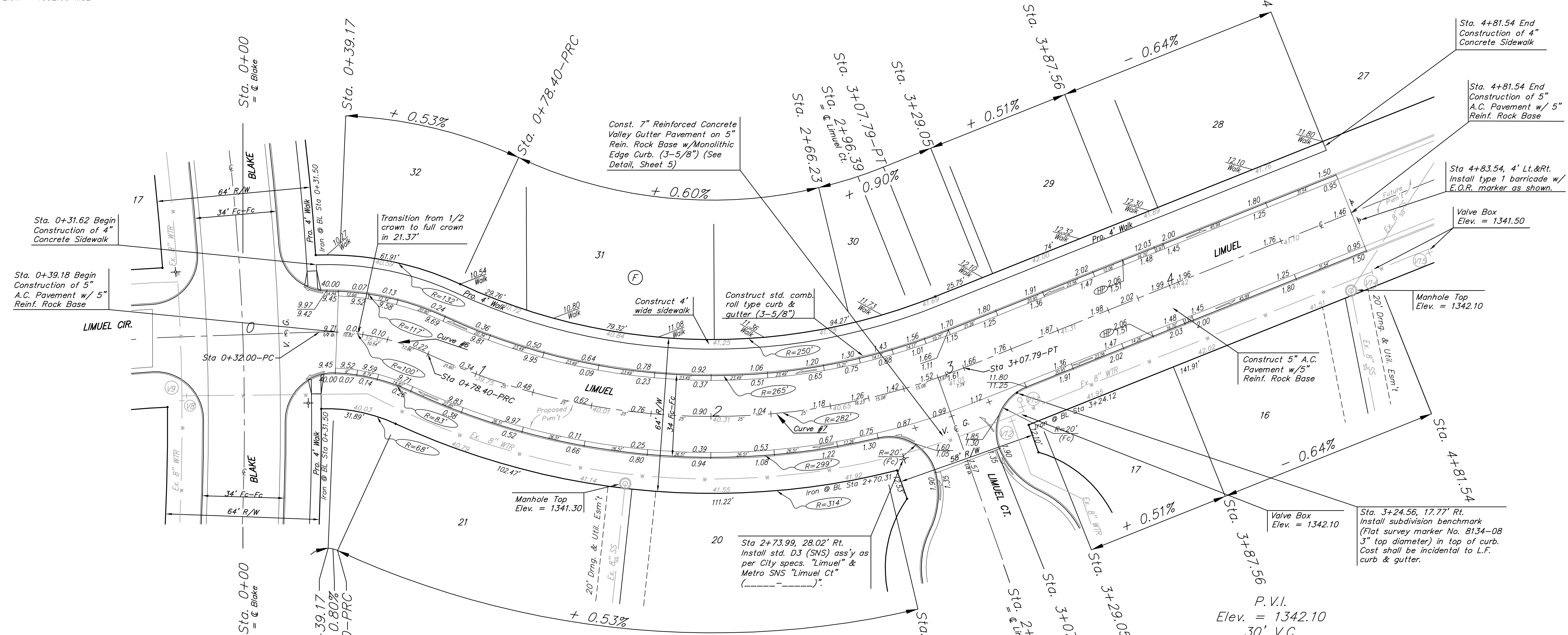
BENCHMARKS:

135th St. W. & Pawnee—
City of Wichita Benchmark
Disc on SW Corner of
Concrete Base of High Line
Pole.
Elev. = 1359.65 NGVD29

119th St. W. & Pawnee—
City of Wichita Benchmark
Disc 0.5 miles S of Kellogg.
42.2' E of centerline & 6.4'
S of Power Pole.
Elev. = 1332.09 MSL



P.V.I.
Elev. = 1342.10
30' V.C.



WATER VALVE LOCATION TABLE

VALVE NUMBER	BASELINE STATION	OFFSET DISTANCE	OFFSET DIRECTION
V12	3+18.28	28.00'	Rt.
V13	3+24.36	26.00'	Rt.
V14	4+80.49	26.00'	Rt.
V15	5+05.49	26.00'	Rt.

Paving contractor will be responsible to operate all water valves on the project, in the presence of the inspector, to ensure accessibility to the valves, and that all valves are left in the "ON" position when the project is completed.

Curve #7
Curve Data Based on Centerline
Rad. = 282' Delta = 46°36'18" Tangent = 121.46'
Arc = 229.39' L.C. = 223.11' Def./Ft. = 6.09508 Min.

Station	Arc	6' Right	Defl.	Total Defl.
0+78.40	-	-	0'00"00"	0'00"00"
1+00.00	21.60'	22.05'	2'11"39"	2'11"39"
1+25.00	25.00'	25.52'	2'32"23"	4'44"02"
1+50.00	25.00'	25.52'	2'32"22"	7'16"24"
1+75.00	25.00'	25.52'	2'32"23"	9'48"47"
2+00.00	25.00'	25.52'	2'32"23"	12'21"10"
2+25.00	25.00'	25.52'	2'32"22"	14'53"32"
2+50.00	25.00'	25.52'	2'32"23"	17'25"55"
2+66.23	16.23'	16.57'	1'38"55"	19'04"50"
2+75.00	8.77'	8.96'	0'53"28"	19'58"18"
2+96.39	21.39'	21.84'	2'10"22"	22'08"40"
3+00.00	3.61'	3.69'	0'22"00"	22'30"40"
3+07.79	7.79'	7.96'	0'47"29"	23'18"09"

Curve #6
Curve Data Based on Centerline
Rad. = 100' Delta = 26°52'18" Tangent = 23.89'
Arc = 46.40' L.C. = 46.47' Def./Ft. = 17.37392 Min.

Station	Arc	6' Left	6' Right	Defl.	Total Defl.
0+32.00	-	-	-	0'00"00"	0'00"00"
0+35.03	3.03'	3.25'	2.88'	0'52"39"	0'52"39"
0+39.17	4.14'	4.44'	3.93'	1'11"55"	2'04"34"
0+50.00	10.83'	11.60'	10.28'	3'08"10"	5'12"44"
0+75.00	25.00'	26.71'	23.69'	7'14"21"	12'27"05"
0+78.40	3.40'	3.64'	3.23'	0'59"04"	13'26"09"

NOTE: ROLL TYPE CURB & GUTTER TO BE CONSTRUCTED ON THE PAVEMENT SHOWN ON THIS SHEET. TOP OF CURB ELEVATIONS ARE GIVEN FOR FULL HEIGHT CURB.

Baughman Turkey Creek 3rd Addition - Phase I
Limuel Sta. 0+39.18 to 4+81.54

Baughman Company, P.A. 315 Ella St. Wichita, KS 67211 F 316-262-7271 F 316-262-0149
ENGINEERING | SURVEYING | PLANNING | LANDSCAPE ARCHITECTURE

PROJECT NUMBER: 472-84486
DESIGN: MWS
DRAWN: JRW
APPROVED: MWS
DATE: 08/07
SCALE: Noted
SHEET: 12 OF 54

E:\Turkey creek 3rd\Phase 1\07-15-Str.dwg 07-07-E92