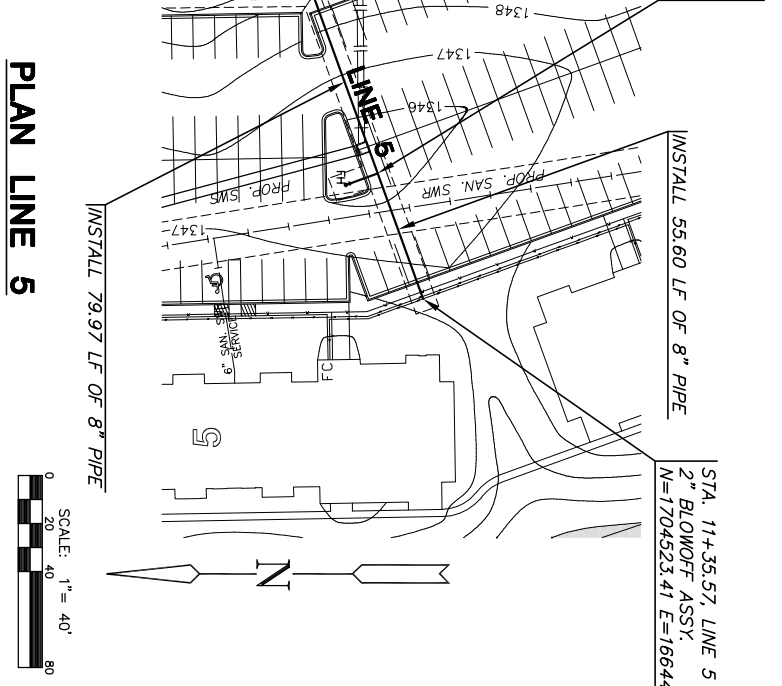
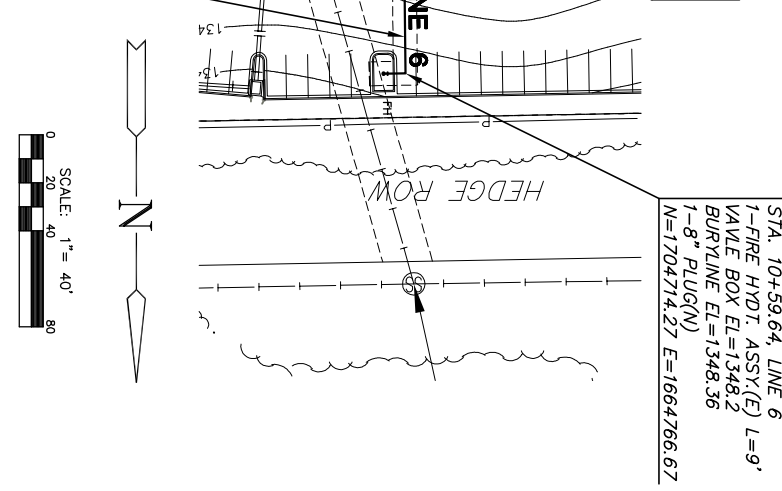


STA. 10+79.97, LINE 5  
 1-FIRE HYD. ASSY (N) L=14'  
 VALVE BOX EL=1345.7  
 BURY LINE EL=1346.3  
 N=1704542.34 E=1664523.29



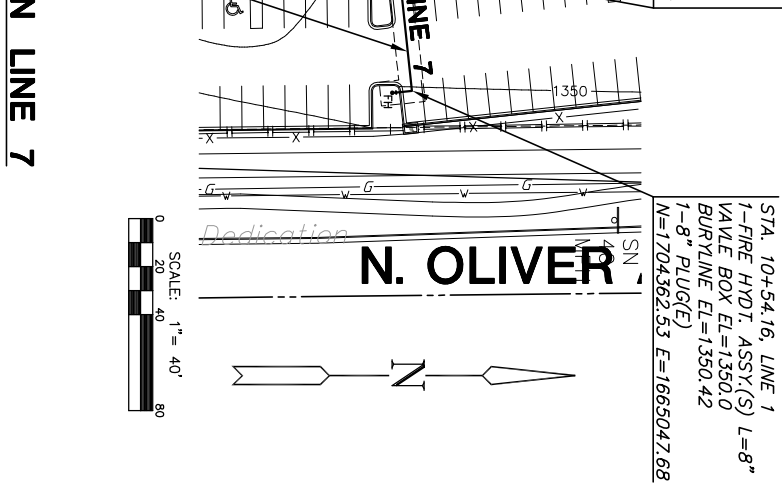
STA. 11+35.57, LINE 5  
 2" BLOWOFF ASSY  
 N=1704523.41 E=1664471.02

STA. 10+00.00, LINE 6  
 STA. 14+12.33, LINE 1  
 8" TEE & VALVE  
 N=1704654.63 E=1664767.33



STA. 10+59.64, LINE 6  
 1-FIRE HYD. ASSY (E) L=9'  
 VALVE BOX EL=1348.2  
 BURY LINE EL=1348.36  
 1-8" PLUG (N)  
 N=1704714.27 E=1664766.67

STA. 10+00.00, LINE 7  
 STA. 14+46.20, LINE 2  
 8" TEE  
 8" VALVE ASSY (E)  
 VALVE BOX EL=1350.9  
 N=1704356.79 E=1664993.82



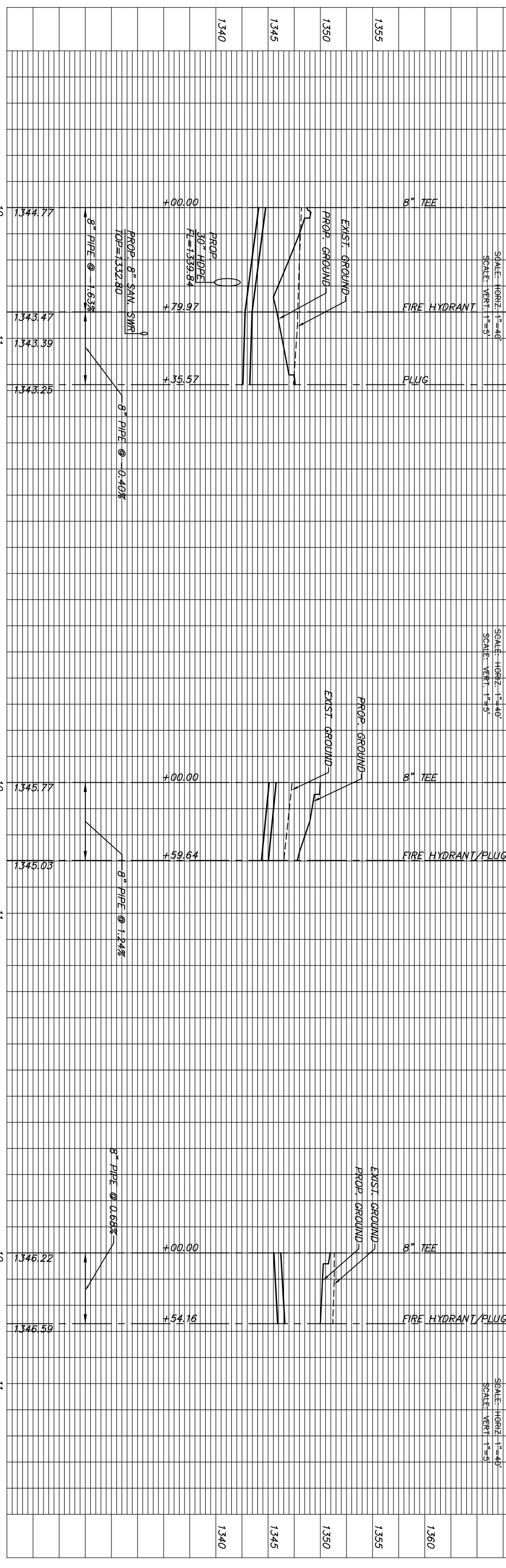
STA. 10+54.16, LINE 1  
 1-FIRE HYD. ASSY (S) L=8"  
 VALVE BOX EL=1350.0  
 BURY LINE EL=1350.42  
 1-8" PLUG (E)  
 N=1704362.53 E=1665047.68

**PROFILE LINE 5**

**PROFILE LINE 6**

**PROFILE LINE 7**

AS-BUILT FEBRUARY 2008



ISSUED  
 October 2007

REVISID

DESIGN BY  
 JWC

DRAWN BY  
 GJA

CHECKED BY

SHEET NO.  
**8 of 8**

**LINES 5 - 7**

SHEET TITLE  
 07008 (CC)

PROJECT NUMBER  
 07254 (MKEC)

DESIGN BY  
 JWC

DRAWN BY  
 GJA

CHECKED BY

**WATER DISTRIBUTION PLANS**

**THE GROVE AT WICHITA**

LOT 1, BLOCK 1 CAMPUS CREST

**MKEC**

ENGINEERING  
 CONSULTANTS, INC.

411 N. WEBB ROAD  
 WICHITA, KS 67206  
 316-684-9600