

GENERAL NOTES

PRIVATE STORM SEWER AND RECONSTRUCTION SANITARY SEWER

HANGAR 16 REHAB, MID-CONTINENT AIRPORT PRIVATE PROJECT NUMBER 1769 PPS (607861)

As Built Plans
Contractor: Tri-State Plumbing
Inspector: Don Eddingfielt
pdf's by: KEK, 3/24/08

Released 4/4/08
JDL 4/17/08

1. Contractor will be required to provide a minimum advance notice of forty-eight (48) hours to utility companies prior to starting any excavation as follows:

Kansas One-Call 687-2470

The Contractor must notify the following in case of an emergency:

- Cox Communications 262-0661
- Kansas Gas Service 383-8600
- Westar 383-8600
- Aquila Energy 1-800-303-0357
- Southwestern Bell Telephone Company 1-800-286-8313
- City of Wichita Water Department 262-6000
- City of Wichita Sewer Maintenance 262-6000

2. Existing utilities and their location, as shown on the plans, represent the best information obtainable for design. Location information has been obtained from the various utility companies and is either from company record drawings or company-provided field locations. The Contractor will be required to work around existing utilities within the right-of-way which do not conflict with proposed construction.

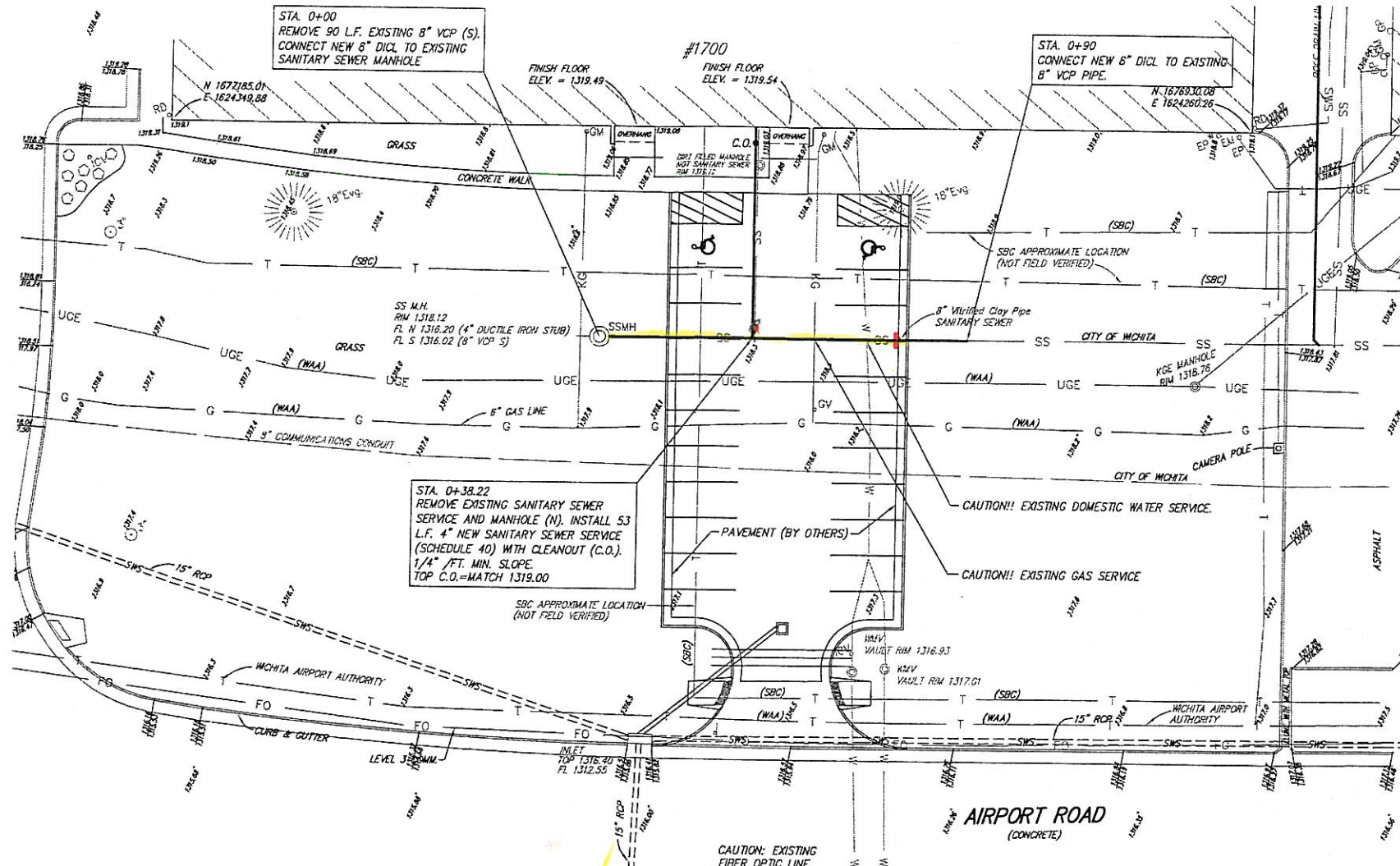
3. This project is to be constructed in accordance with City of Wichita Standard Specifications for the Construction of City Projects, and Policy on Construction of Public Works Improvements by Private Contract.

4. No work shall begin on this project before required bonds are submitted to the City of Wichita, and the project inspector has been notified.

5. All areas of public R/W disturbed by construction of this project are to be restored in accordance with Administrative Regulation AR 78 of the City of Wichita.

6. Sewage flow in the existing sanitary sewer shall be maintained at all times. The Contractor's plan for maintaining flow shall be submitted and approved by the Engineer prior to beginning work on the project.

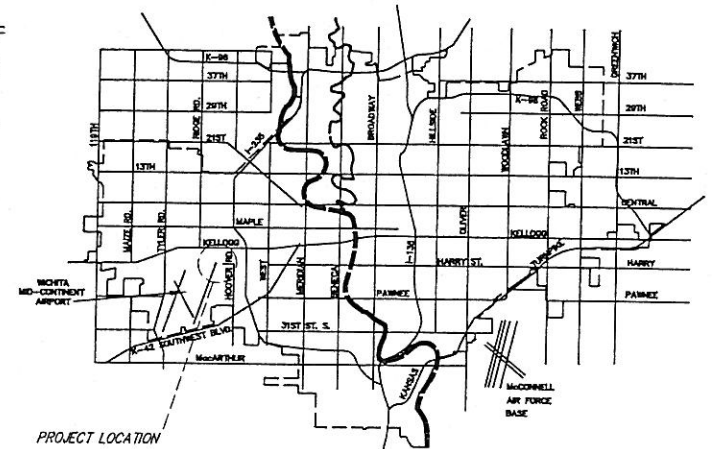
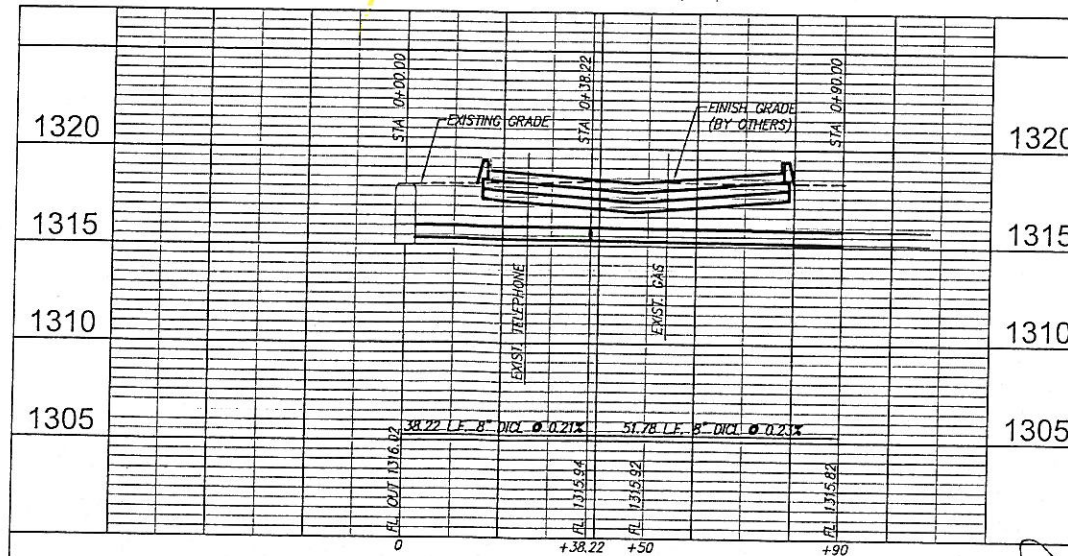
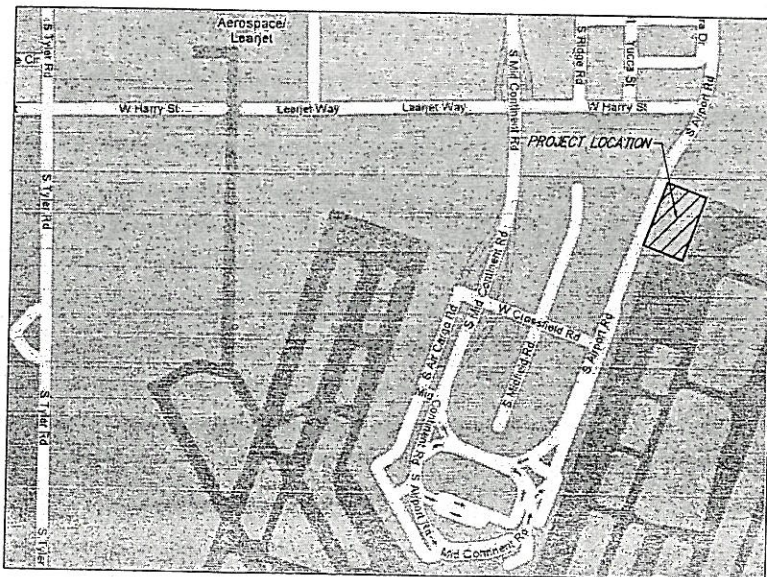
7. Traffic will not be affected by this project.



HORIZONTAL CONTROL - AIRPORT GRID SYSTEM
 PT #303
 #4 BAR 5' NORTH OF EAST GATE POST NEAR THE CENTERLINE OF HARRY STREET (REMOVED) 150'± EAST OF TAXIWAY "H" AND 16.30' SOUTH OF PUEBLO DR.
 N 1677904.69
 E 1625478.84

PT #304
 #4 BAR 60' EAST OF SECURITY FENCE EAST SIDE OF TAXIWAY "H", ON LINE WITH 2-BLUE TAXILIGHTS TO THE WEST 89.3' SE OF A FENCE LINE BRACE POST, 920'± SOUTH OF PUEBLO DR.
 N 1679607.93
 E 1625484.52

PT #305
 #4 BAR 5' NORTH AND 5' EAST OF SECURITY FENCE CORNER AT NORTH END TAXIWAY "H" 30'± SOUTH OF CENTERLINE PUEBLO DR.
 N 1679498.82
 E 1625445.40



RB
 SCALE: 1"=20'
 1"=5' (VERT.)
 CHRISTOPHER MICHAEL BOHM
 LICENSED PROFESSIONAL ENGINEER
 #1631
 2/22/08
 KANSAS

CITY OF WICHITA, KANSAS
JAMES L. ARMOUR, P.E., CITY ENGINEER

APPROVED AS NOTED
 BY CITY ENGINEER OF WICHITA

Sanitary Sewers LCJ 2-22-08

Storm Sewers _____

Driveway Approaches _____

Water Mains _____

Paving _____

Inspection by Wichita Airport Authority.
 (Baughman Co. P.A.)

HANGAR 16, MID-CONTINENT AIRPORT
 SANITARY SEWER PLAN & PROFILE
 WICHITA, KANSAS

Ruggles & Bohm, P.A.
 Engineering, Surveying, Land Planning

924 North Main
 Wichita, Kansas 67203
 www.rbkansas.com

(316) 264-8008
 (316) 264-4521 fax
 E-mail: info@rbkansas.com

DESIGN TCR
 DRAWN EJB
 REVIEW
 UTILITY
 DATE Feb. 22, 2008

SHEET 7 OF 7