

FINAL PLAT

KRUG SOUTH ADDITION

AN ADDITION TO WICHITA, SEDGWICK COUNTY, KANSAS

DRAINAGE RESERVES LINE TABLE

| LINE | LENGTH | BEARING |
|------|---------|-------------|
| L1 | 218.52' | N12°28'30"W |
| L2 | 107.16' | N12°28'30"W |
| L3 | 130.23' | N07°28'42"W |
| L4 | 159.23' | S39°07'41"W |
| L5 | 40.00' | N80°18'03"E |
| L6 | 80.00' | N33°05'39"E |
| L7 | 40.37' | N13°28'00"E |
| L8 | 27.99' | N71°45'50"E |
| L9 | 20.41' | N07°32'55"W |
| L10 | 72.63' | S63°19'03"W |
| L11 | 93.04' | S21°07'37"W |
| L12 | 23.42' | S86°19'48"E |
| L13 | 41.15' | N77°41'34"E |
| L14 | 59.42' | N49°35'40"E |
| L15 | 40.00' | N30°39'25"E |
| L16 | 91.60' | N17°48'12"E |
| L17 | 178.55' | S55°32'53"W |

LEGEND
Date of Survey: September, 2007

- △ = Section Corner Monument Found
- ⊙ = Found 3/8" Rebar w/ MKEC CLS 39 id. cap
- = Set 3/8" Rebar w/ MKEC CLS 39 id. cap
- = Found 1/2" Rebar w/ Baughman id. cap
- (M) = Measured
- (CM) = Calculated from measured
- (P) = Platted
- (D) = Deeded or Described

BENCH MARKS

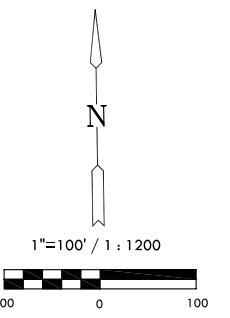
Datum BM: "1" at NE corner of Inlet on S. side of Williamsgate over bridge in Hawthorne Addition.
Elev. = 1355.74 (NGVD 29)

BM#3: RR spike in N. face of HLP in N. pole, the first HLP w. of E. 143rd St. being 57.3' NE. of SE. corner of Lot 8, Blk. 2.
Elev. = 1370.25 (NGVD 29)

BM#4: RR spike in N. face of HLP in N. pole, the third HLP west of E. 143rd St. being 59.0' NNW of SE. corner of Lot 15, Blk. 2.
Elev. = 1358.43 (NGVD 29)

MINIMUM PAD ELEVATIONS LOWEST OPENINGS

| LOTS (inclusive) | BLOCK | ELEVATION NGVD |
|------------------|-------|----------------|
| 27 - 32 | 2 | 1360.9 |
| 40 & 41 | 2 | 1360.9 |
| 33 - 39 | 2 | 1361.7 |
| 52 - 58 | 2 | 1347.7 |
| 59 | 2 | 1348.0 |
| 60 | 2 | 1348.4 |
| 61 | 2 | 1348.9 |
| 62 | 2 | 1349.9 |
| 63 | 2 | 1350.7 |
| 64 | 2 | 1352.5 |
| 66 & 65 | 2 | 1354.2 |
| 68 - 72 | 2 | 1355.8 |



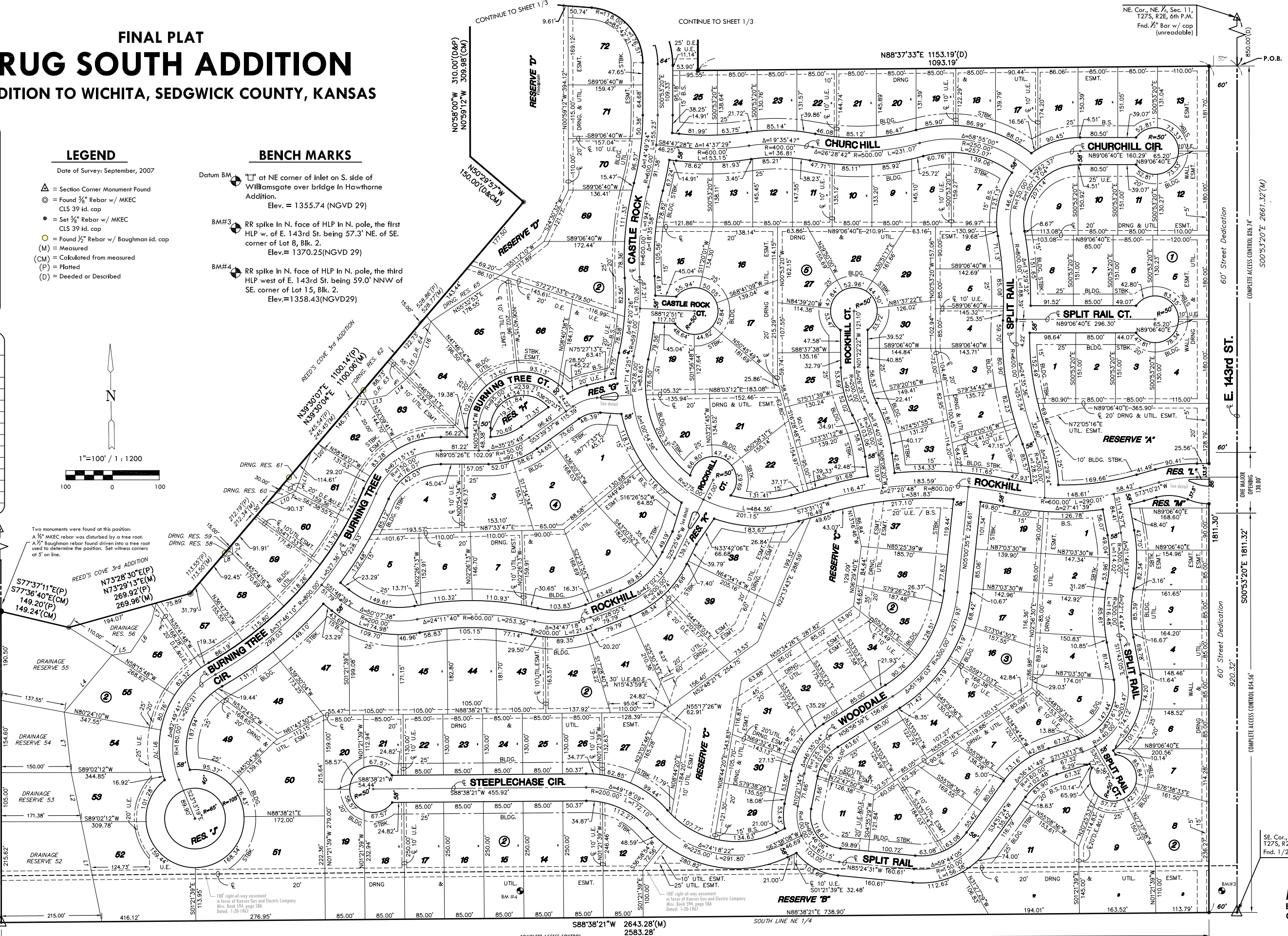
Two monuments were found at this position:
A 3/8" MKEC rebar was disturbed by a tree root.
A 1/2" Baughman rebar found driven into a tree root used to determine the position. Set witness corners at 5' on line.

REED'S COVE 3rd ADDITION
N73°28'30"E(P)
N73°29'13"E(M)
269.92'(P)
269.96'(M)

S77°37'11"E(P)
S77°36'40"E(CM)
149.20'(P)
149.24'(CM)

NW. Cor., NE 1/4, Sec. 11, T27S, R2E, 6th P.M.
Fnd. 3/4" Pipe

SW. Cor., NE 1/4, Sec. 11, T27S, R2E, 6th P.M.
Fnd. nail in stone



NE. Cor., NE 1/4, Sec. 11, T27S, R2E, 6th P.M.
Fnd. 1/2" Bar w/ cap (unreadable)

P.O.B.

60' Street Dedication

COMPLETE ACCESS CONTROL 824.74'

500°33'20"E 2661.32'(M)

ONE MAJOR OPENING 130.00'

60' Street Dedication

COMPLETE ACCESS CONTROL 854.56'

920.32'

500°33'20"E 1811.32'

SE. Cor., NE 1/4, Sec. 11, T27S, R2E, 6th P.M.
Fnd. 1/2" Bar w/ PEC cap

MKEC
ENGINEERING
CONSULTANTS, INC.

411 N. WEBB ROAD
WICHITA, KS. 67206
316-684-9600