

CONSTRUCTION PLANS FOR PROPOSED LATERAL 39, MAIN 1, COWSKIN INTERCEPTOR SEWER

SANITARY SEWER IMPROVEMENTS RAINBOW LAKES WEST ADDITION

FOR
THE CITY OF WICHITA
SEDGWICK COUNTY, KANSAS

Jim Armour, P.E., City Engineer

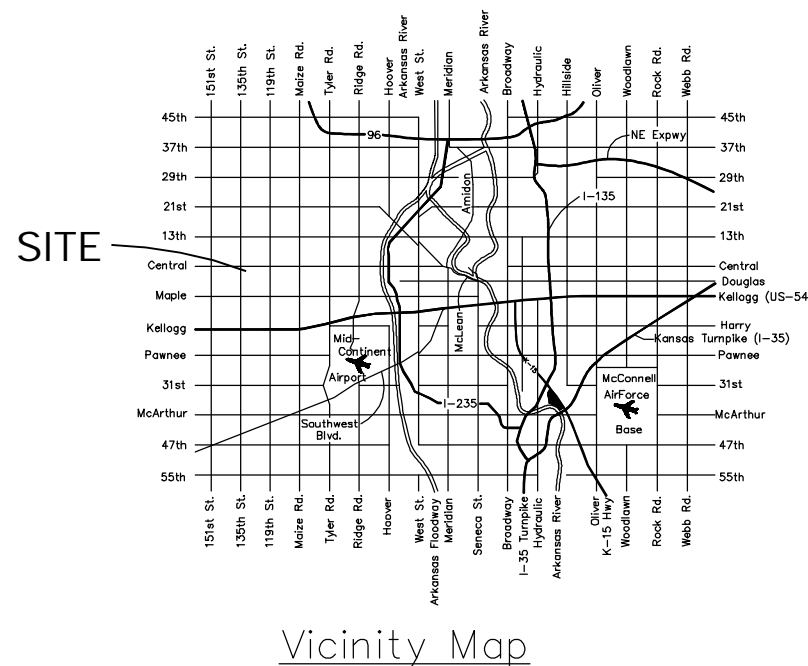
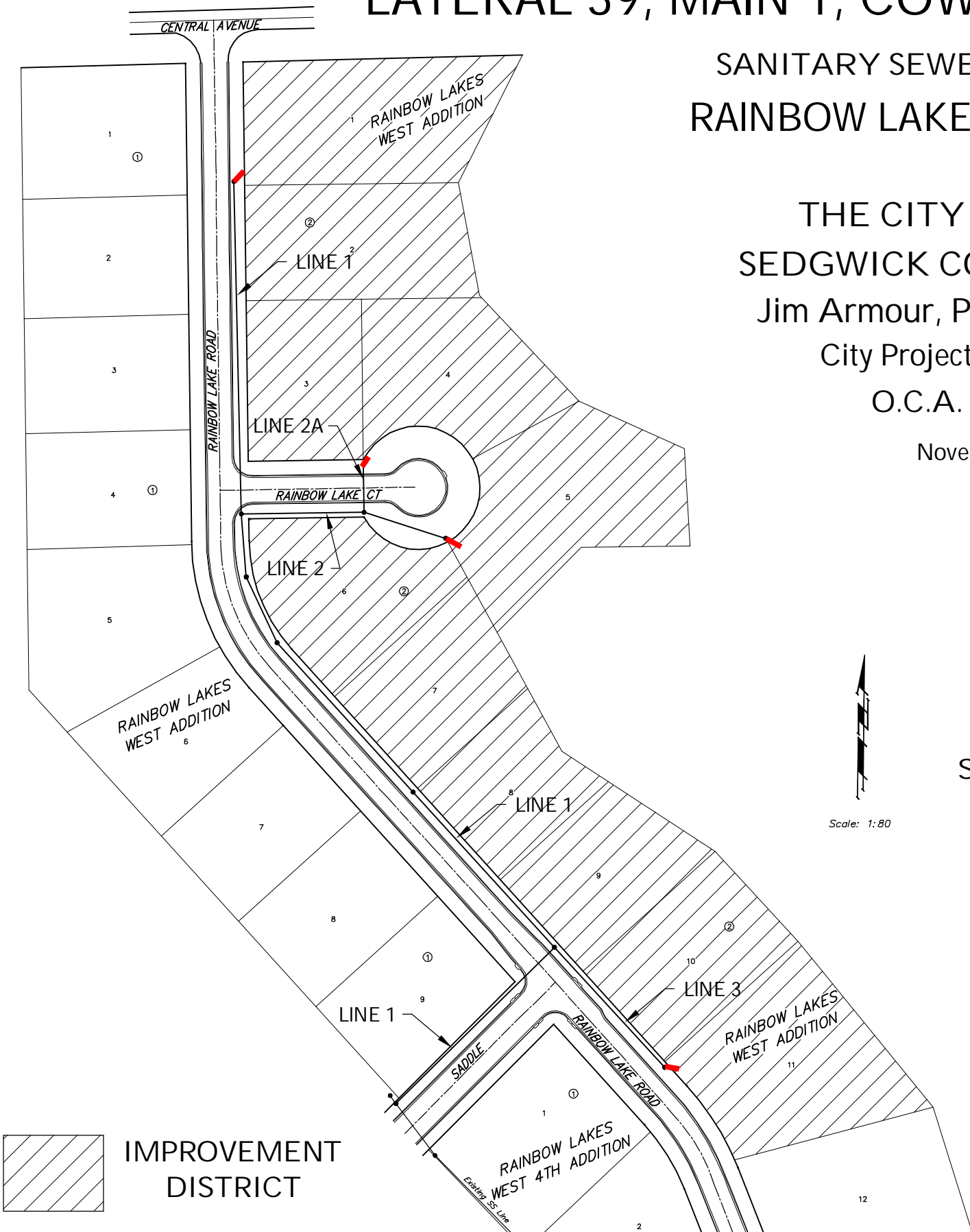
City Project No. 468-84168

O.C.A. No. 744180

November 2006

**Dondlinger & Sons Construction Co.,
Inc. - Contractor**
Hartman, City - Inspector
Released 9/11/07
As-Built - No changes
Cleanout Riser & Stubs
.pdf by JDL 4/23/08

Index	
Title Sheet	1
General Notes	2
Keysheet	3
Sanitary Sewer Plan/Profile Sheets	4-8
Standard Manhole Detail	9
Shallow Manhole Detail	10
Ring & Cover Detail	11
Standard Cleanout Detail	12
Erosion Control Map	13
Erosion Control BMP	14-17
Plat	18



Benchmarks

BM #1 - "□" CUT ON TOP OF NORTH CURB APPROX 8.2' NW OF NW EDGE OF DRIVEWAY ON LOT 8, BLOCK 2, RAINBOW LAKES WEST ADDITION
ELEV. = 156.20'

BM #2 - "□" CUT ON TOP OF CURB AT N END OF N CURB RETURN AT INTERSECTION OF RAINBOW LAKES AND RAINBOW LAKES CT.
ELEV. = 156.82