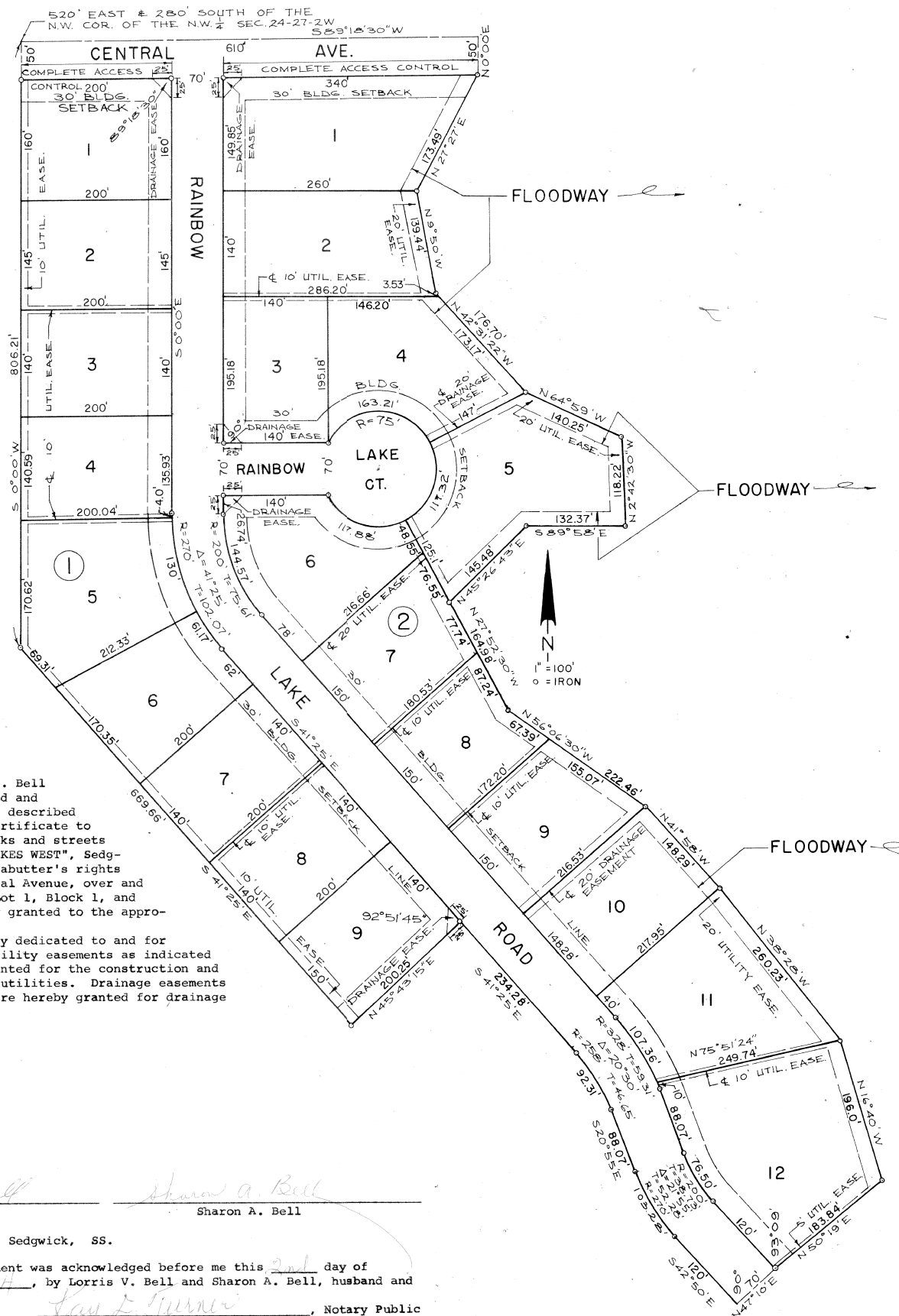


RAINBOW LAKES WEST

SEDGWICK COUNTY, KANSAS



State of Kansas)
County of Sedgwick) SS.

Know all men by these presents that we, Lorris V. Bell and Sharon A. Bell, husband and wife, have caused the land described in the Civil Engineer's certificate to be platted into lots, blocks and streets to be known as "RAINBOW LAKES WEST", Sedgwick County, Kansas. All abutter's rights of access to or from Central Avenue, over and across the north line of Lot 1, Block 1, and Lot 1, Block 2, are hereby granted to the appropriate governing body.

The streets are hereby dedicated to and for the use of the public. Utility easements as indicated on the plat are hereby granted for the construction and maintenance of all public utilities. Drainage easements as indicated on the plat are hereby granted for drainage purposes.

Lorris V. Bell Sharon A. Bell
Lorris V. Bell Sharon A. Bell

State of Kansas, County of Sedgwick, SS.

The foregoing instrument was acknowledged before me this 2nd day of July, 1974, by Lorris V. Bell and Sharon A. Bell, husband and wife.

Kay D. Turner
Notary Public

State of Kansas, County of Sedgwick, SS.

I, Kenneth O. Taylor, Civil Engineer in said State and County, do hereby certify that I have surveyed and platted "RAINBOW LAKES WEST", Sedgwick County, Kansas, and that the accompanying plat is a true and correct exhibit of said survey described as follows: A tract in the NW 1/4 of Section 24, T27S, R2W of the 6th P.M., Sedgwick County, Kansas, described as follows: Commencing at the NW corner of said NW 1/4; thence S0°00'W on the west line of said NW 1/4, 280 feet; thence N89°18'30"E parallel to the north line of said NW 1/4, 520 feet to a point of beginning; thence S0°00'W parallel to the west line of said NW 1/4, 806.21 feet; thence S41°25'E, 669.66 feet; thence N45°43'15"E, 200.25 feet; thence S41°25'E, 234.28 feet to the P.C. of a curve; thence southeasterly on a curve to the right having a radius of 258 feet and a deflection angle of 20°30', 92.31 feet to the P.T. of said curve; thence S20°55'E on a tangent to said curve, 86.07 feet to the P.C. of a curve; thence southeasterly on a curve to the left having a radius of 270 feet and a deflection angle of 21°55', 103.28 feet to the P.T. of said curve; thence S42°50'E on a tangent to said curve, 120 feet; thence N47°10'E, 70 feet; thence N50°19'E, 183.84 feet; thence N16°40'W, 196.00 feet; thence N38°28'W, 260.23 feet; thence N41°58'W, 148.29 feet; thence N56°06'30W, 222.46 feet; thence N27°52'30"W, 164.98 feet; thence N45°26'43"E, 145.48 feet; thence S89°58'E, 132.37 feet; thence N2°42'30"W, 118.22 feet; thence N64°59'W, 140.25 feet; thence N42°31'22"W, 176.70 feet; thence N9°50'W, 139.44 feet; thence N27°27'E, 173.49 feet; thence N0°00'E, 50 feet; thence S89°18'30"W, 610 feet to the point of beginning.

Kenneth O. Taylor
Kenneth O. Taylor, Civil Engineer

This plat approved and all dedications shown hereon accepted by the Board of City Commissioners of the City of Wichita, Kansas, this 19 day of AUGUST, 1975.

Connie A. Peters, Mayor
Donald C. Gisick, City Clerk

This plat approved and all dedications shown hereon accepted by the Board of County Commissioners of Sedgwick County, Kansas, this 9th day of September, 1975.

ATTEST:
George Pierce, County Clerk
Carl E. Rush, Chairman
Tom Scott, Commissioner
John Hale, Commissioner

Entered on transfer record this 10th day of September, 1975.

246722

State of Kansas, County of Sedgwick, SS.

This is to certify that this instrument was filed for record in the Register of Deeds Office, at 11:00 o'clock a.m., on the 10th day of September, 1975.

Bette F. McCart, Register of Deeds
Pearl B. Gilbert, Deputy

Seneca National Bank of Wichita, by W. Nolan Artz, President, and Mid Kansas Federal Savings and Loan Association of Wichita, by Kenneth P. Brasted, U. Pres., mortgagees of the land described in the Civil Engineer's certificate, do hereby consent to the platting of "RAINBOW LAKES WEST", Sedgwick County, Kansas.

ATTEST:
Richard Hoff, CASHIER
W. Nolan Artz, President

ATTEST:
David H. Brasted, Sec'y.
Kenneth P. Brasted, U. Pres.

State of Kansas, County of Sedgwick, SS.

The foregoing instrument was acknowledged before me this 2nd day of July, 1974, by W. Nolan Artz, President, of Seneca National Bank of Wichita, a Kansas corporation, on behalf of the corporation.

Kay D. Turner, Notary Public

State of Kansas, County of Sedgwick, SS.

The foregoing instrument was acknowledged before me this 28th day of June, 1974, by Kenneth P. Brasted, U. Pres., of Mid Kansas Federal Savings and Loan Association of Wichita, a Kansas corporation, on behalf of the corporation.

Georgia E. Van Arken, Notary Public

This plat of "RAINBOW LAKES WEST", Sedgwick County, Kansas, has been submitted to and approved by the Wichita-Sedgwick County Metropolitan Area Planning Commission, Wichita, Kansas.

Dated this 13th day of JUNE, 1974.

Wichita-Sedgwick County Metropolitan Area Planning Commission
By Marjorie L. Taylor, Chairman
Robert A. Lakin, Secretary

