

Lateral 523, SWI
 SANITARY SEWER IMPROVEMENTS
 to serve
GRAY'S 6TH ADDITION

CITY OF WICHITA, KANSAS

James L. Armour, P.E. City Engineer

Project Number

468-84360

O.C.A. Number

744240

Benchmarks

CITY OF WICHITA BENCHMARK DISK -
 NORTHEAST CORNER OF INTERSECTION
 OF 47TH STREET SOUTH & HOOVER RD.
 21.60' NORTH OF CENTERLINE
 71.50' EAST OF CENTERLINE
 73.60 FEET EAST NORTHEAST OF
 SECTION COR.
 5.90' WEST OF POWER POLE
 ELEV. = 1290.46 NGVD29

Dondlinger & Sons Construction Co., Inc. - Contractor
 DeCicco, City - Inspector
 Released 12/7/07
 As-Built
 Risers & Stubs
 .pdf by JDL 4/23/08

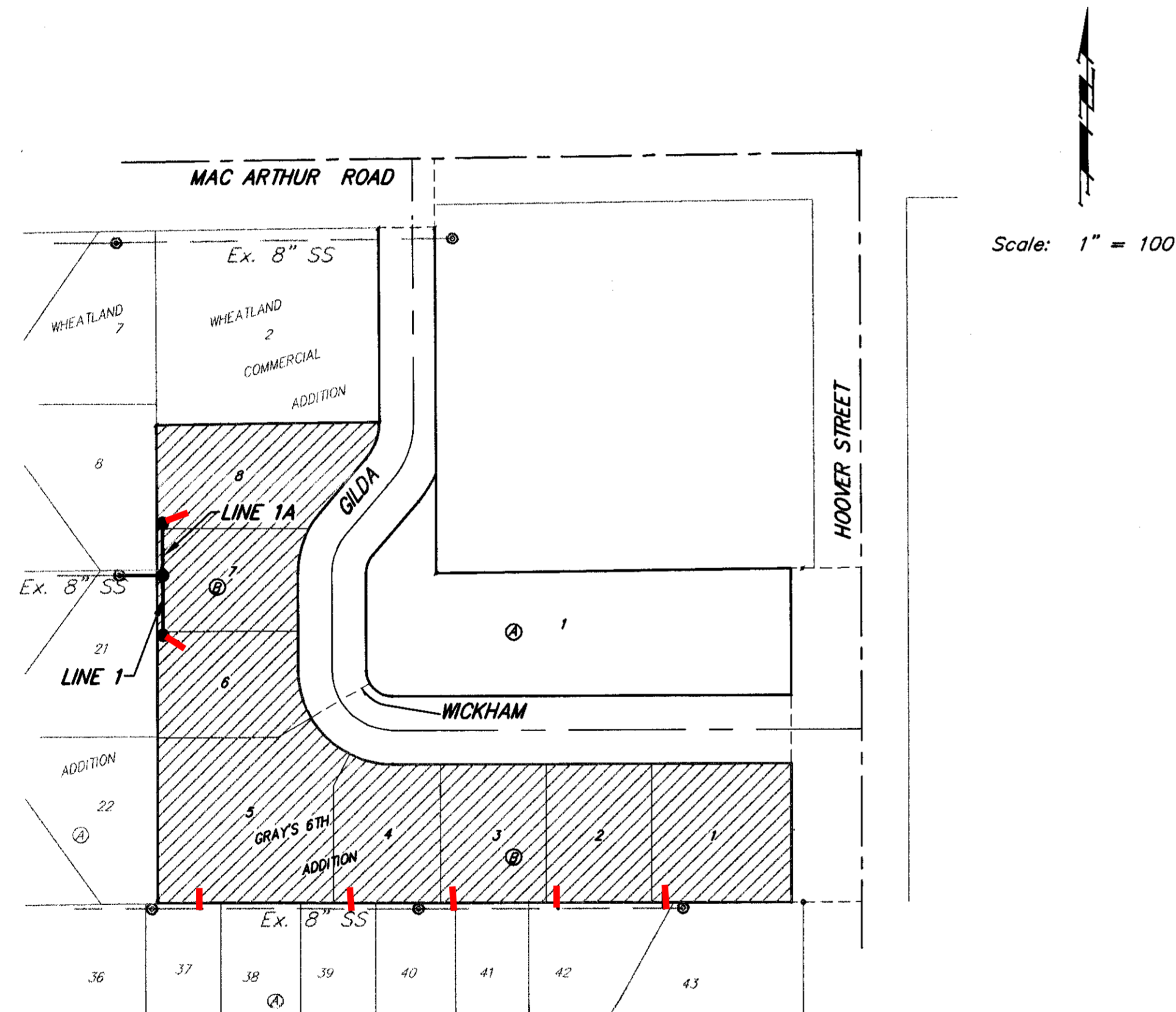
GENERAL NOTES:

- Contractor will be required to provide notice to utility companies a minimum of forty-eight (48) hours prior to any excavation, as follows:

Kansas One-Call	687-2470
-----------------	----------

The Contractor must notify the following in case of an emergency:

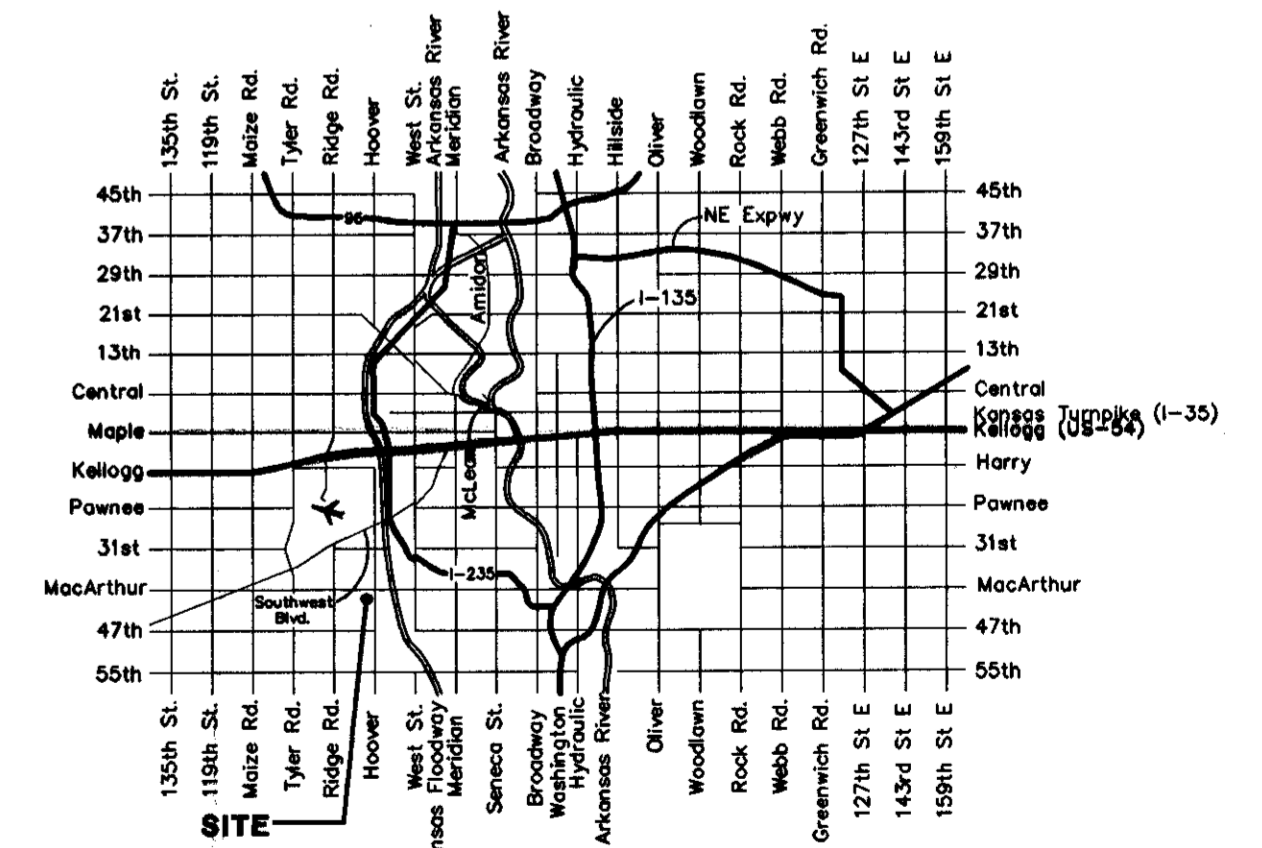
Cox Communications	262-4270
Kansas Gas Service	1-888-482-4950
Westar Energy	383-8650
Aquila Energy	1-800-303-0357
AT&T	268-2245
City of Wichita Water Dept.	268-4563
City of Wichita Sewer Maint.	268-4024
City of Wichita Storm Sewer Maint.	268-4090
Conoco Phillips Pipeline Co.	268-4034
Southern Star Pipeline Co.	1-877-267-2290
Kindler-Morgan Pipeline Co.	529-6600
	1-888-844-5658
- Utility service lines, poles, valve boxes, meters, and etcetera are to be adjusted as necessary by others prior to construction unless the plans specifically call for their adjustment by the Contractor or unless the plans specifically identify a utility to be adjusted by its owner during construction. Existing utilities and their location, as shown on the plans, represent the best information obtainable for design. The Contractor will be required to work around existing utilities within the right-of-way which do not conflict with proposed construction.
- Rubble from the removal of miscellaneous structures can be disposed of on site. All excess excavation shall remain on site. These sites shall be approved by the Engineer as to suitability, appearance and site location. Locations, in the opinion of the Engineer, that will leave an unsightly appearance will not be approved. All disposal sites must be approved by the Kansas Department of Health and Environment. Material either stockpiled or disposed of in a flood plain would require a Kansas State Board of Agriculture permit. Any material dumped in waters of the United States or wetlands is subject to U.S. Corps. of Engineers permitting regulations. Any material buried or stockpiled beyond approved construction limits would require additional archaeological investigations unless buried in a previously approved borrow location.
- Trees and shrubs in public right-of-way which are in direct conflict with proposed new construction shall be removed by the Contractor with the Engineer's approval. Trees and shrubs which are not in direct conflict with proposed new construction shall be saved and protected from damage.
- The Contractor shall give all property owners and/or tenants of developed property abutting the construction of this project a minimum of ten (10) days notice prior to start of construction.
- The Contractor shall be responsible for preserving property irons. The Contractor will be required to re-establish any property irons which are damaged or destroyed by his construction operations. Such irons shall be re-established by a licensed land surveyor in accordance with state laws.
- All existing and proposed erosion control measures including silt fencing, erosion control mat, straw bales, inlet barriers, and const. entrance shall be maintained throughout construction by the contractor and until project is accepted by the City of Wichita. The on-site engineer shall complete weekly reports on the status of erosion control measures. The contractor shall be required to comply with maintenance and/or replacement of erosion control measures as determined by the on-site engineer until project is accepted by City of Wichita. Maintenance and/or replacement of erosion control measures to be paid by L.S. bid item "Site Clearing & Restoration".
- The Contractor shall be responsible for maintaining continuous flow of sewage through construction. Contractor's proposed method for maintaining sewage flow shall be approved by the Engineer. Cost of maintaining flow of sewage through construction will not be paid for directly and this cost shall be considered as subsidiary to the other pay items of work.
- Easements will be graded and seeded with street project (separate project).
- The developer for this project is Gray Development, Inc.



Note: Risers placed on existing Lateral 523, SWI (N-204) to serve new development.

Sheet Index

Title Sheet	1
Lines 1 & 1A	2
Standard Manhole Detail	3
Ring & Cover Detail	4
Vertical Riser Detail	5
Erosion Control Plan	6
Erosion Control BMP Details	7-10
Coordinate Sheet	11
Copy of Plat	12



Vicinity Map

Benefit District



Baughman Company, P.A. 315 Ellis St. Wichita, KS 67211 P 316-262-7271 F 316-262-0149
 ENGINEERING | SURVEYING | PLANNING | LANDSCAPE ARCHITECTURE