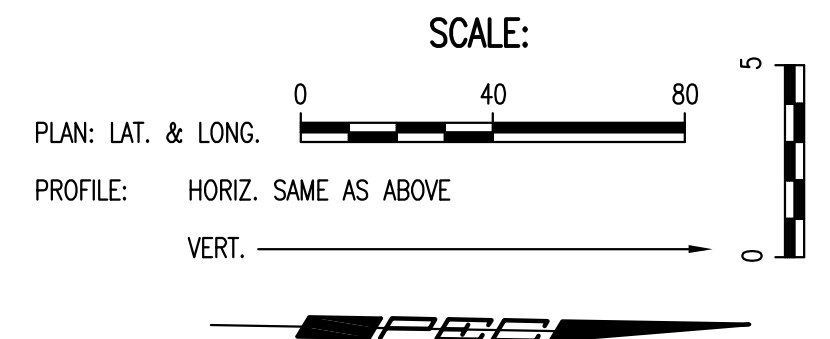


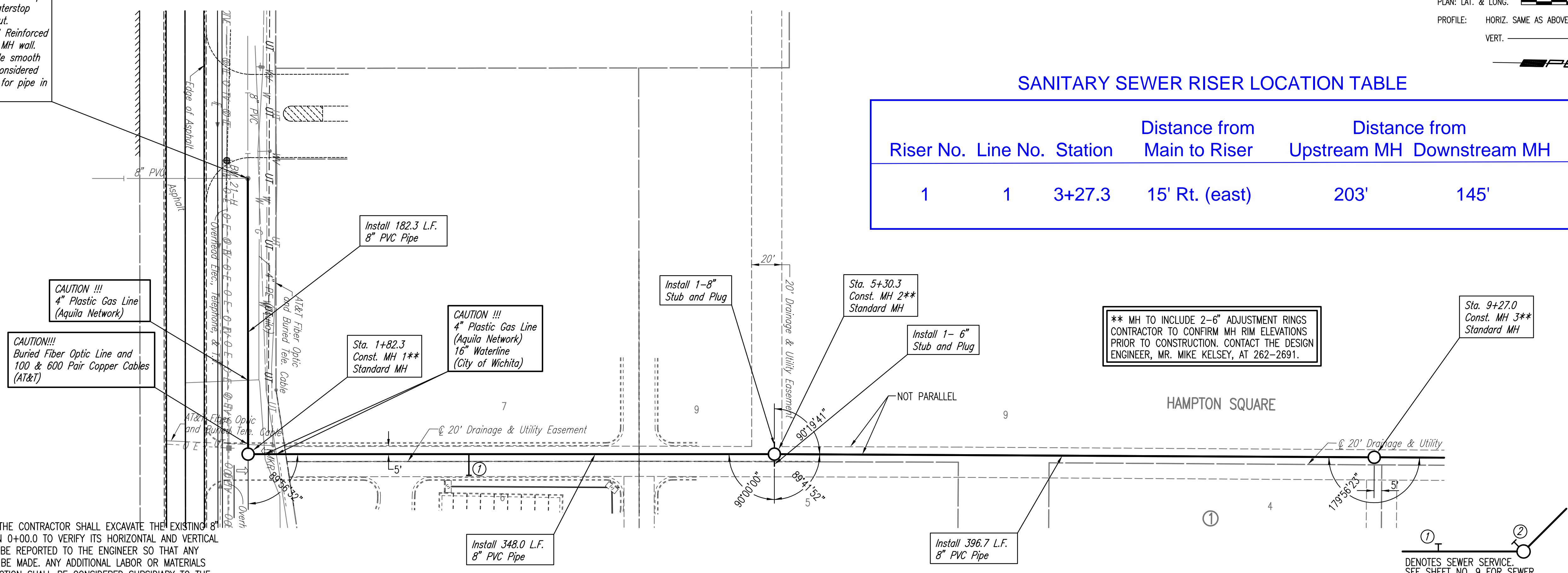
Sta. 0+00.0  
 Core existing concrete MH wall and  
 Install New 8" Pipe. Seal new 8" Pipe  
 to MH with an approved waterstop  
 gasket and non-shrink grout.  
 Construct a minimum of 3' Reinforced  
 Concrete Encasement from MH wall.  
 Reshape MH floor to provide smooth  
 flow. This work shall be considered  
 subsidiary to the price bid for pipe in  
 place.



**SANITARY SEWER RISER LOCATION TABLE**

Riser No.	Line No.	Station	Distance from Main to Riser	Distance from Upstream MH	Distance from Downstream MH
1	1	3+27.3	15' Rt. (east)	203'	145'

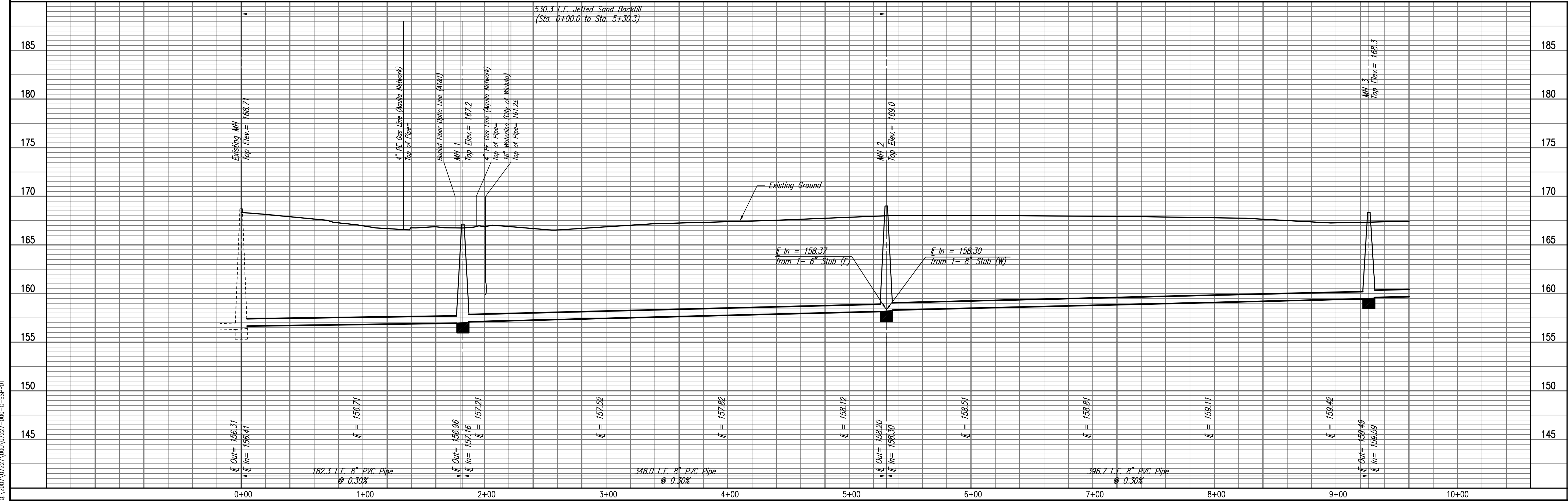
DATE
BY
CHECKED
CHECKED
PLAN



\* PRIOR TO BEGINNING CONSTRUCTION, THE CONTRACTOR SHALL EXCAVATE THE EXISTING 8" PVC PIPE AT SANITARY SEWER STATION 0+00.0 TO VERIFY ITS HORIZONTAL AND VERTICAL LOCATION. THE PIPE LOCATION SHALL BE REPORTED TO THE ENGINEER SO THAT ANY NECESSARY PLAN MODIFICATIONS CAN BE MADE. ANY ADDITIONAL LABOR OR MATERIALS NECESSARY TO COMPLETE THE CONNECTION SHALL BE CONSIDERED SUBSIDIARY TO THE PROJECT.

**SANITARY SEWER LINE NO. 1**

DATE
BY
CHECKED
CHECKED
PROFILE



LATERAL 4, MAIN 7 OF THE  
 NORTHWEST INTERCEPTOR SEWER  
**SANITARY SEWER LINE NO. 1**  
 JAMES L. ARMOUR, P.E. - CITY ENGINEER  
 CITY OF WICHITA PROJECT NO. 468-83826

Professional Engineering Consultants, P.A.  
 603 S. TOPICKA AVENUE, WICHITA, KANSAS 67202  
 316-262-2691 • FAX 316-262-3003  
 Job No. 35-07227-000-042  
 Date MAY 2007  
 Designed By MDK  
 Drawn By SAW

Saved 09-24-2007 1:20:18 PM by AME  
 Plot Scale 1:40 (09-24-2007 3:25:46 PM by AME  
 C:\2007\07227\000\07227-000-C-SSP01