

STATE	PROJECT NO.	YEAR	SHEET NO.	TOTAL SHEETS
KANSAS	87 N-0190-01	2005	1	96

KDOT PROJ. NO. 87 N-0190-01
F.A. NO. STP N019 (001)

MILL AND OVERLAY
GRADING AND SURFACING
STORM SEWER
PAVEMENT MARKING
SEEDING
REINFORCED CONCRETE BOX CULVERT

STATE OF KANSAS

DEPARTMENT OF TRANSPORTATION



PLAN AND PROFILE OF PROPOSED 21st STREET NORTH IMPROVEMENTS FROM OLIVER TO WOODLAWN

FEDERAL AID PROJECT

WICHITA, SEDGWICK COUNTY, KANSAS

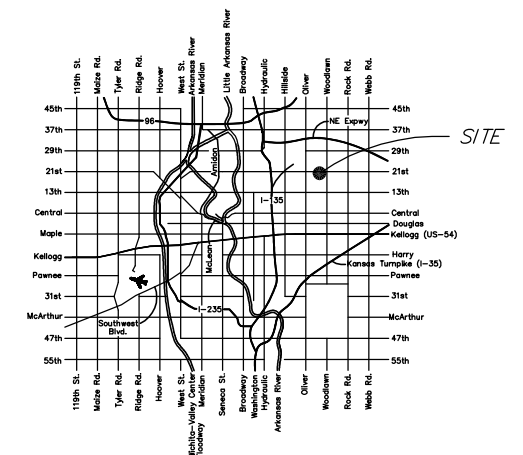
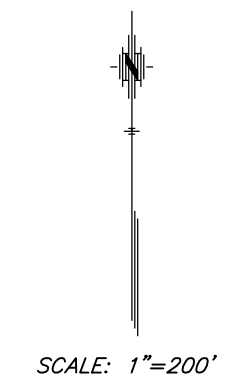
POPULATION = 335,562

CITY OF WICHITA PROJECT NO. 472-84235

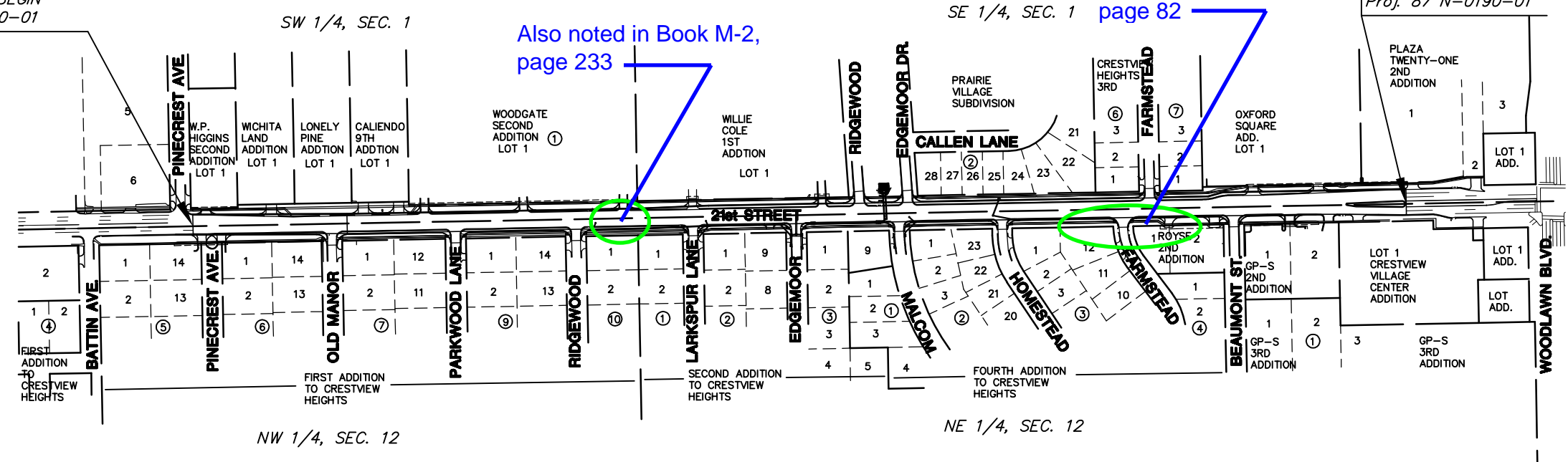
CITY OF WICHITA O.C.A. NO. 706923

INDEX OF SHEETS

SHEET NO	DESCRIPTION
1	TITLE SHEET
2	GENERAL NOTES
3-4	TYPICAL SECTIONS
5-11	PLAN SHEETS
12-16	STORM SEWER PLAN AND PROFILE
17-23	PAVING DETAILS
24-34	INLET AND MANHOLE DETAILS
35-36	SCHEDULE OF INLETS AND MANHOLES
37-42	RCB DETAILS
43-44	SANITARY SEWER PLAN AND PROFILE
45	MISCELLANEOUS DETAILS
46	SUMMARY OF QUANTITIES
47-54	SOIL EROSION BMP
55	SEEDING
56-58	PAVEMENT MARKING PLAN
58-60	SIGNING PLAN
61-62	SIGNING DETAILS
63	CONSTRUCTION SEQUENCE SUMMARY
64-72	TRAFFIC CONTROL
73-74	DRAINAGE DATA SHEET
75-96	CROSS SECTIONS



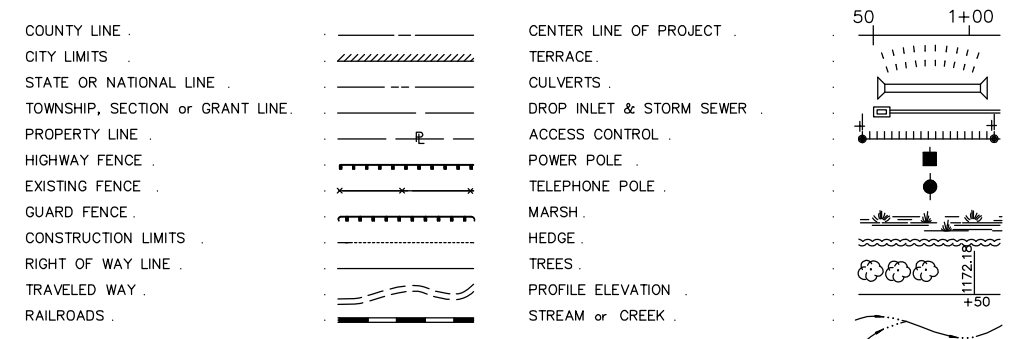
Sta. 23+64.15 BEGIN
Proj. 87 N-0190-01



DESIGN DESIGNATION

AADT (2002)	=	25,892
AADT (2030)	=	31,000
DHV	=	10 %
D	=	60 %
T	=	3 %
V	=	40 M.P.H.
Control of Access	=	NONE
Clear Zone	=	6 FT.

CONVENTIONAL SIGNS



GROSS LENGTH OF PROJECT	3,528.35 FT.
EXCEPTIONS	0.00 FT.
ADDITIONS	0.00 FT.
NET LENGTH OF PROJECT	3,528.35 FT.
NET LENGTH OF BRIDGES	0.00 FT.
NET LENGTH OF ROAD	3,528.35 FT.

Cornejo & Sons, Inc. - Contractor
Anthis, City - Inspector
Released 9/6/06
Per Plan
.pdf by JDL 4/30/08

NOTE:
TWO WAY TRAFFIC TO BE CARRIED THROUGH CONSTRUCTION. LOCAL TRAFFIC WILL BE PERMITTED TO ADJACENT PROPERTIES.

PREPARED & SUBMITTED BY
MKEC ENGINEERING CONSULTANTS, INC.
WICHITA, KANSAS

APPROVED - DATE

JIM ARMOUR, P.E.
CITY ENGINEER
PROJECT NO. 87 N-0190-01