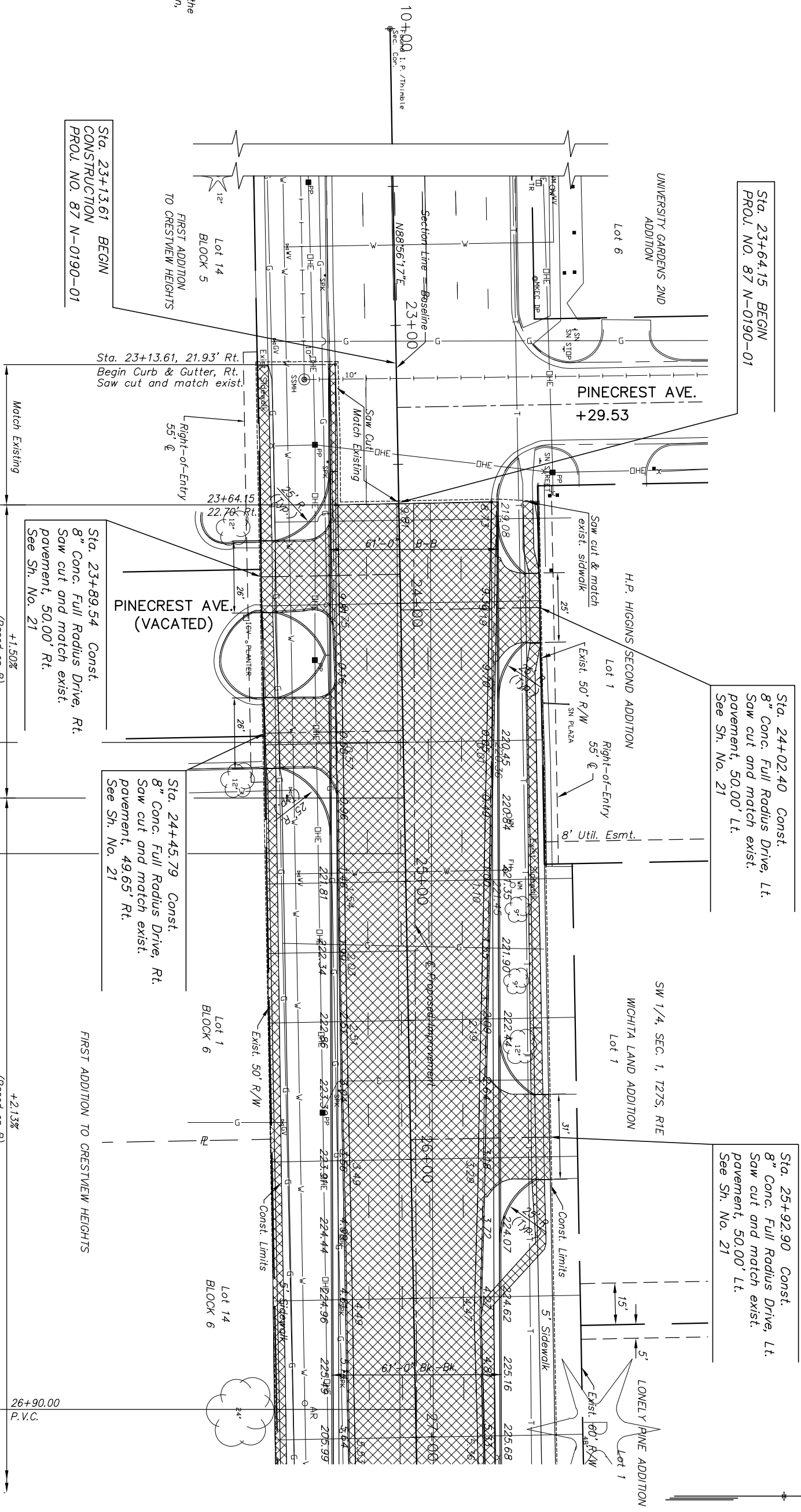
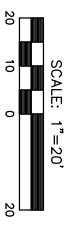


| | | | | |
|--------|--------------|------|-----------|--------------|
| STATE | PROJECT NO. | YEAR | SHEET NO. | TOTAL SHEETS |
| KANSAS | 87 N-0190-01 | 2005 | 5 | 96 |



PROJECT SURVEY CONTROL

Horiz. Proj. Datum: **NAD 83**
 Project Coordinate: **N 1699548.087, E 1673809.393**
 Vert. Datum: **NGVD 29**
 Datum Bench Mark: **C.O.W. Benchmark located at the S.W. corner of 21st Street and Woodlawn intersection, top of concrete retaining wall, south and west of property line.**
 USGS Elevation: **1391.18 (203.78 C.O.W.)**

UTILITIES

Contractor will be required to provide a minimum advance notice of seventy-two (72) hours to utility companies prior to starting any excavation as follows:
 Kansas one-call: **1-800-344-7233**
 Or local (wchitta): **687-2470**
 Cox communications (cable): **262-0861**
 Westor (electric): **261-6512**
 Kansas gas service (gas): **832-3101**
 Sbc (telephone): **800-870-8390**
 City of Wichita water & sewer: **262-6000**
 Aquila (gas): **946-0096**

LEGEND

- Mill and Overlay
- Pavement/Walk Removal
- Pavement Widening
- Full Depth Pavement Patch

1. Southwest Corner, Section 1, T27S, R1E
2. Sta. 10+00.00, 0.00 Lt.
3. Found Iron Pipe and Thimble
- 4.
- 5.

J:\DWI\104178\dwg\PAV\104178E01.dwg, 5/18/2005, 3:47:36 PM CST
 KANSAS DEPARTMENT OF TRANSPORTATION
21ST STREET NORTH IMPROVEMENTS
STA. 23+00 TO STA. 27+00
 PROJECT NO. 87 N-0190-01
M K E C ENGINEERING CONSULTANTS, INC.
 WICHITA, KANSAS

| | | | |
|--------------|-----|-------------|---------|
| DESIGNED BY: | LAC | CHECKED BY: | JRA |
| DRAWN BY: | DFG | DATE: | 3/17/05 |
| | | SHEET: | 5 OF 96 |