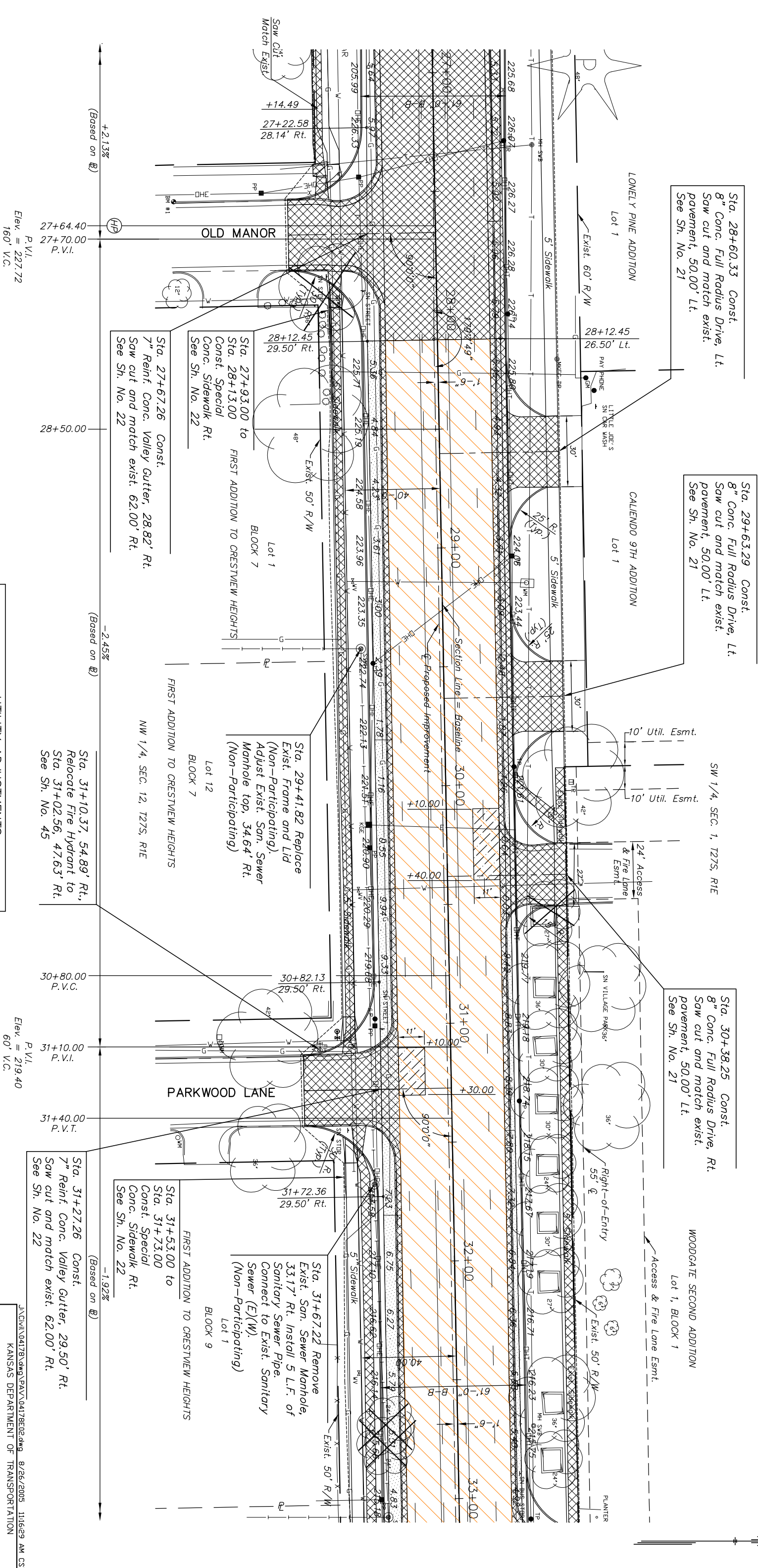


STATE	PROJECT NO.	YEAR	SHEET NO.	TOTAL SHEETS
KANSAS	87 N-0190-01	2005	6	96

Note:
Remove Railroad ties around trees and deliver to owner.



P.V.I.
Elev. = 227.72
160' V.C.

P.V.I.
Elev. = 219.40
60' V.C.

UTILITY ADJUSTMENTS

DESCRIPTION	STATION/OFFSET	REMARKS
Water Valve	27+94.26, 41.92' Rt.	Adjust
Water Valve	29+13.25, 37.55' Rt.	Adjust
Water Valve	30+43.12, 37.57' Rt.	Adjust
Water Valve	31+06.33, 42.12' Rt.	Adjust
Water Valve	32+46.51, 41.21' Rt.	Adjust

LEGEND

- Mill and Overlay
- Pavement/Walk Removal
- Pavement Widening
- Full Depth Pavement Patch

21ST STREET NORTH IMPROVEMENTS
STA. 27+00 TO STA. 33+00

PROJECT NO. 87 N-0190-01 SEDGWICK CO.
M K E C ENGINEERING CONSULTANTS, INC.
WICHITA, KANSAS

DESIGNED BY:	LKC	CHECKED BY:	JRA
DRAWN BY:	DPG	DATE:	3/17/05
		SHEET:	6 OF 96

BM#1 Square cut on top of curb, south of 21st St., and west curb of Old Manor Sta. 27+52.31, 109.93' Rt. Elev. 227.68