

STATE	PROJECT NO.	YEAR	SHEET NO.	TOTAL SHEETS
KANSAS	87 N-0190-01	2005	7	96

Note:  
Remove Railroad ties around trees and deliver to owner.



Sta. 33+25.78 Const.  
8" Conc. Full Radius Drive, Lt.  
Saw cut and match exist.  
Pavement, 50.00' Lt.  
See Sh. No. 21

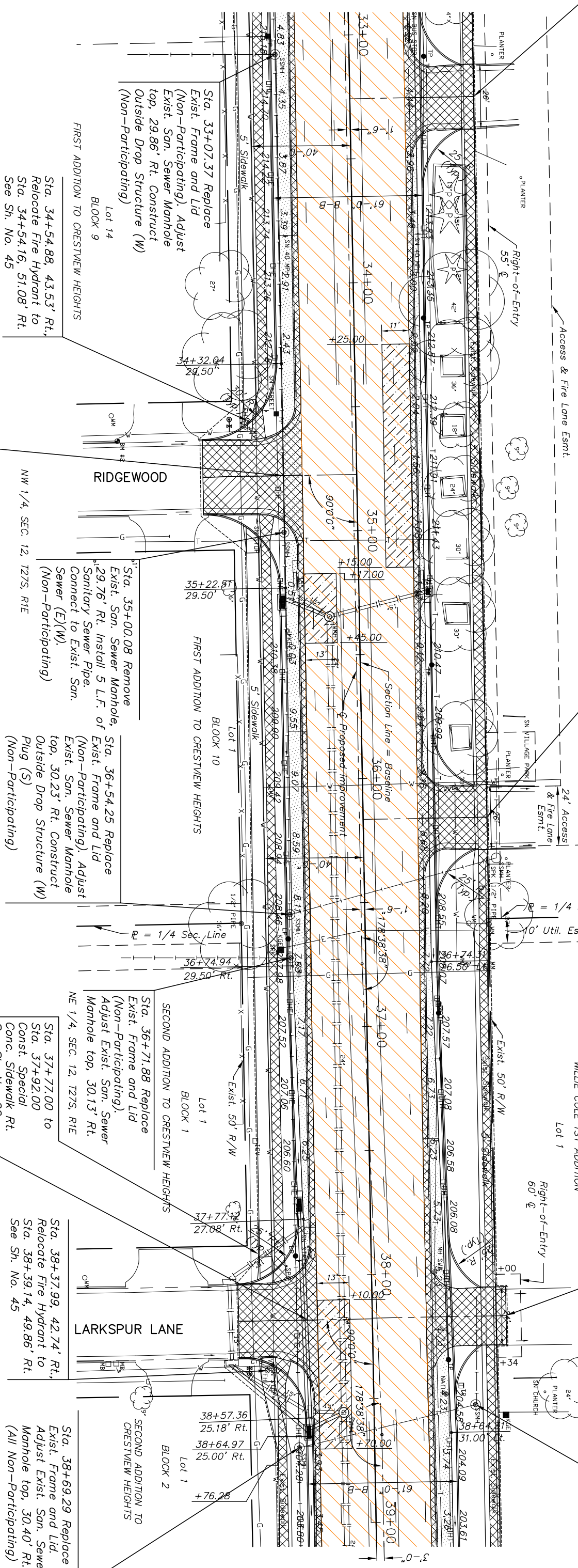
SW 1/4, SEC. 1, T27S, R1E  
WOODGATE SECOND ADDITION  
Lot 1, BLOCK 1

Sta. 36+16.44 Const.  
8" Conc. Full Radius Drive, Lt.  
Saw cut and match exist.  
Pavement, 50.00' Lt.  
See Sh. No. 21

Sta. 38+17.58 Const.  
8" Conc. Full Radius Drive, Lt.  
Saw cut and match exist.  
Pavement, 55.00' Lt.  
See Sh. No. 21

SE 1/4, SEC. 1, T27S, R1E  
WILLIE COLE 1ST ADDITION  
Lot 1

Sta. 38+53.22 Replace  
Exist. Frame and Lid.  
Adjust Exist. San. Sewer  
Manhole top, 41.04' Lt.  
(All Non-Participating)



Sta. 34+77.28 Const.  
7" Reinf. Conc. Valley Gutter, 29.50' Rt.  
Saw cut and match exist. 62.07' Rt.  
See Sh. No. 22

Lot 14  
BLOCK 9  
FIRST ADDITION TO CRESTVIEW HEIGHTS  
Sta. 34+54.88, 43.53' Rt.,  
Relocate Fire Hydrant to  
Sta. 34+54.16, 51.08' Rt.  
See Sh. No. 45

Lot 1  
BLOCK 10  
FIRST ADDITION TO CRESTVIEW HEIGHTS  
Sta. 35+00.08 Remove  
Exist. San. Sewer Manhole,  
29.76' Rt. Install 5 L.F. of  
Sanitary Sewer Pipe.  
Connect to Exist. San.  
Sewer (E)(W).  
(Non-Participating)

Lot 1  
BLOCK 1  
SECOND ADDITION TO CRESTVIEW HEIGHTS  
Sta. 36+71.88 Replace  
Exist. Frame and Lid  
(Non-Participating).  
Adjust Exist. San. Sewer  
Manhole top, 30.13' Rt.  
NE 1/4, SEC. 12, T27S, R1E

Sta. 38+17.89 Const.  
7" Reinf. Conc. Valley Gutter, 26.12' Rt.  
Saw cut and match exist. 53.98' Rt.  
See Sh. No. 22

Lot 1  
BLOCK 2  
SECOND ADDITION TO CRESTVIEW HEIGHTS  
Sta. 38+69.29 Replace  
Exist. Frame and Lid.  
Adjust Exist. San. Sewer  
Manhole top, 30.40' Rt.  
(All Non-Participating)

UTILITY ADJUSTMENTS

DESCRIPTION	STATION/OFFSET	REMARKS
Water Valve	34+59.03, 42.28' Rt.	Adjust
Water Valve	36+02.85, 37.61' Rt.	Adjust
Water Valve	36+04.74, 37.29' Lt.	Adjust
Water Valve	38+36.06, 40.92' Rt.	Adjust
Water Valve	31+06.36, 40.12' Rt.	Adjust

LEGEND

- Mill and Overlay
- Pavement/Walk Removal
- Pavement Widening
- Full Depth Pavement Patch

21ST STREET NORTH IMPROVEMENTS  
STA. 33+00 TO STA. 39+00

DESIGNED BY:	DKG	CHECKED BY:	JRA
DRAWN BY:	DPG	DATE:	3/17/05
PROJECT NO. 87 N-0190-01		SEDGWICK CO.	
M K E C ENGINEERING CONSULTANTS, INC.			
WICHITA, KANSAS			
DRAWN BY: DPG		SHEET 7 OF 96	

J:\DWG\104178\DWG\PAV\104178E03.dwg 8/16/2005 10:06:04 AM CST  
KANSAS DEPARTMENT OF TRANSPORTATION