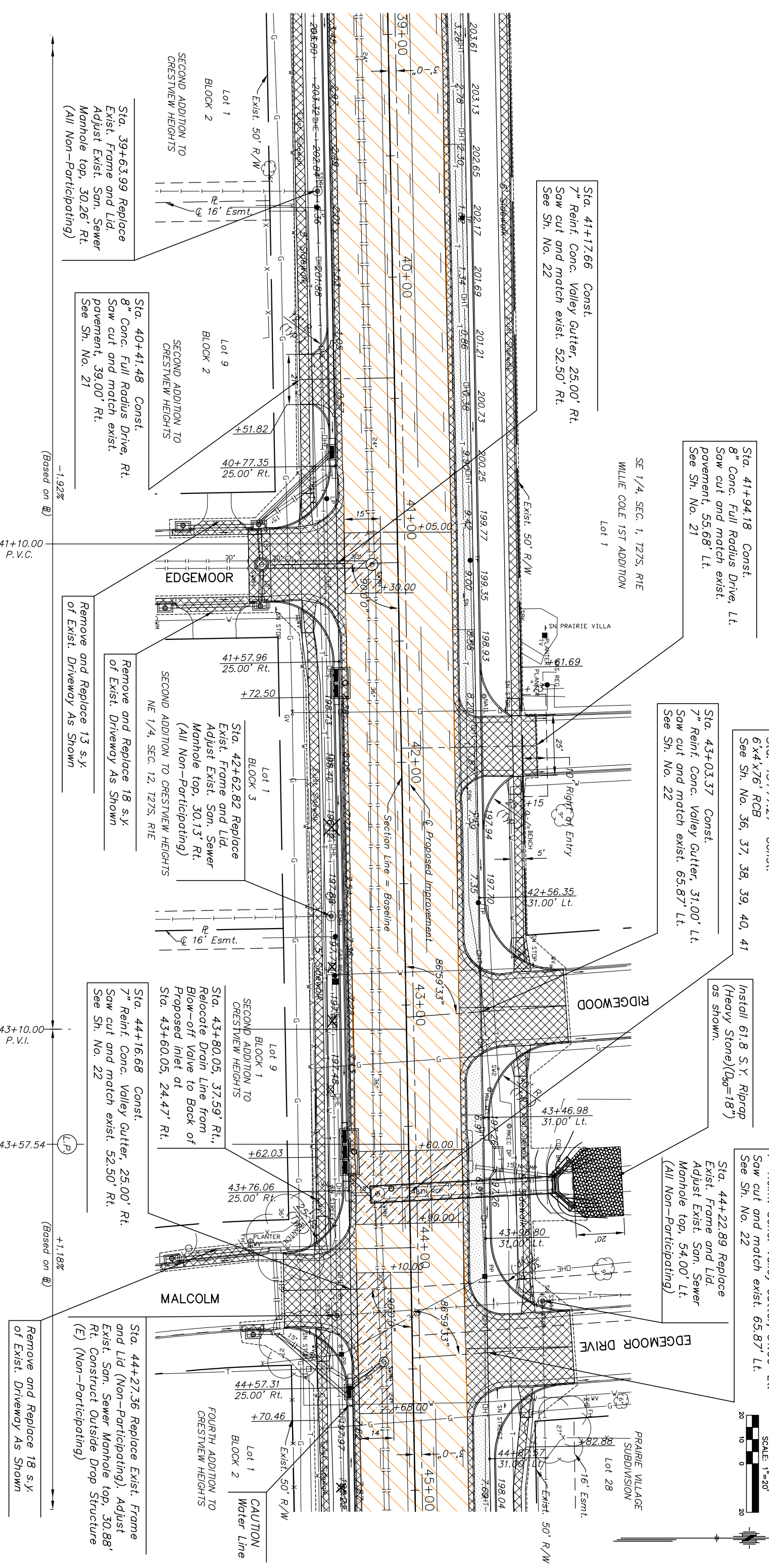
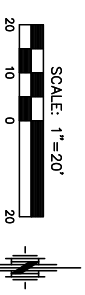


STATE	PROJECT NO.	YEAR	SHEET NO.	TOTAL SHEETS
KANSAS	87 N-0190-01	2005	8	96



Sta. 39+63.99 Replace Exist. Frame and Lid. Adjust Exist. San. Sewer Manhole top, 30.26' Rt. (All Non-Participating)

Sta. 40+41.48 Const. 8\" Conc. Full Radius Drive, Rt. Saw cut and match exist. pavement, 39.00' Rt. See Sh. No. 21

Sta. 41+17.66 Const. 7\" Reinf. Conc. Valley Gutter, 25.00' Rt. Saw cut and match exist. 52.50' Rt. See Sh. No. 22

Sta. 41+94.18 Const. 8\" Conc. Full Radius Drive, Lt. Saw cut and match exist. pavement, 55.68' Lt. See Sh. No. 21

Sta. 43+03.37 Const. 7\" Reinf. Conc. Valley Gutter, 31.00' Lt. Saw cut and match exist. 65.87' Lt. See Sh. No. 22

Sta. 43+77.27 Const. 6\"x4\"x76\" RCB See Sh. No. 36, 37, 38, 39, 40, 41

Install 61.8 S.Y. Riprap (Heavy Stone) (D₅₀=18\" as shown.

Sta. 44+43.89 Const. 7\" Reinf. Conc. Valley Gutter, 31.00' Lt. Saw cut and match exist. 65.87' Lt. See Sh. No. 22

Sta. 44+22.89 Replace Exist. Frame and Lid. Adjust Exist. San. Sewer Manhole top, 54.00' Lt. (All Non-Participating)

Sta. 43+80.05, 37.59' Rt., Relocate Drain Line from Blow-off Valve to Back of Proposed inlet at Sta. 43+60.05, 24.47' Rt.

Sta. 44+27.36 Replace Exist. Frame and Lid (Non-Participating). Adjust Exist. San. Sewer Manhole top, 30.88' Rt. Construct Outside Drop Structure (E) (Non-Participating)

Remove and Replace 18 s.y. of Exist. Driveway As Shown

UTILITY ADJUSTMENTS

DESCRIPTION	STATION/OFFSET	REMARKS
Water Valve	41+39.66, 41.96' Rt.	Adjust
Water Valve	42+81.08, 44.79' Lt.	Adjust
Water Valve	43+74.08, 32.64' Rt.	Adjust
Water Valve	44+43.42, 41.54' Rt.	Adjust

LEGEND

- Mill and Overlay
- Pavement/Walk Removal
- Pavement Widening
- Full Depth Pavement Patch

21ST STREET NORTH IMPROVEMENTS

PROJECT NO. 87 N-0190-01 SEDGWICK CO.
M K E C ENGINEERING CONSULTANTS, INC.
 WICHITA, KANSAS

J:\CIVIL\04178\06\PAV\04178E04.dwg, 08/16/2005, 07:42:31 AM CST
 KANSAS DEPARTMENT OF TRANSPORTATION
 DESIGNED BY: LAG
 CHECKED BY: JRA
 DRAWN BY: DPG
 DATE: 9/20/04
 SHEET 8 OF 96