

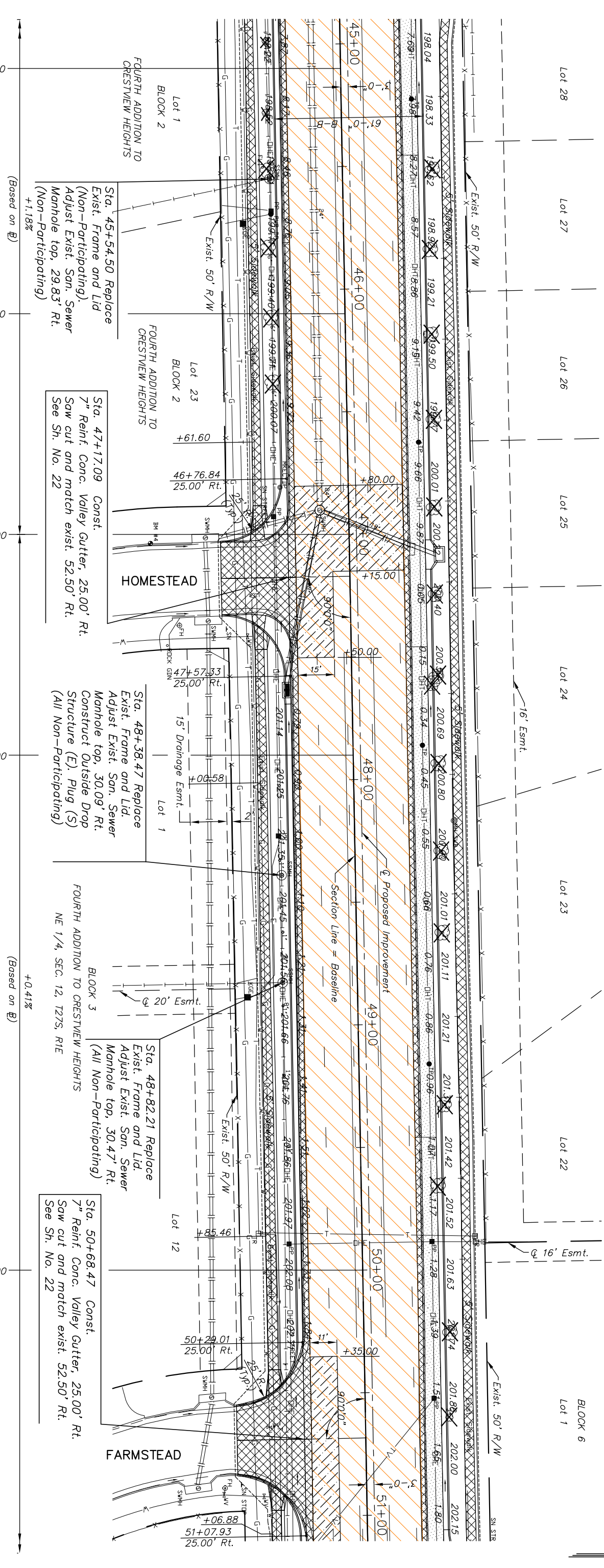
STATE	PROJECT NO.	YEAR	SHEET NO.	TOTAL SHEETS
KANSAS	87 N-0190-01	2005	9	96



SE 1/4, SEC. 1, T27S, R1E

PRAIRIE VILLAGE SUBDIVISION

CRESTVIEW HEIGHTS 3RD



Sta. 45+54.50 Replace
Exist. Frame and Lid
(Non-Participating).
Adjust Exist. San. Sewer
Manhole top, 29.83' Rt.
(Non-Participating)
+1.18%

Sta. 47+17.09 Const.
7" Reinf. Conc. Valley Gutter, 25.00' Rt.
Saw cut and match exist. 52.50' Rt.
See Sh. No. 22

Sta. 48+38.47 Replace
Exist. Frame and Lid.
Adjust Exist. San. Sewer
Manhole top, 30.09' Rt.
Construct Outside Drop
Structure (E). Plug (S)
(All Non-Participating)

Sta. 48+82.21 Replace
Exist. Frame and Lid.
Adjust Exist. San. Sewer
Manhole top, 30.47' Rt.
(All Non-Participating)

Sta. 50+68.47 Const.
7" Reinf. Conc. Valley Gutter, 25.00' Rt.
Saw cut and match exist. 52.50' Rt.
See Sh. No. 22

P.V.I.
Elev. = 201.01
180' V.C.

45+10.00
P.V.T.

46+10.00
P.V.C.

47+00.00
P.V.I.

47+90.00
P.V.T.

50+00.00
P.V.C.

UTILITY ADJUSTMENTS

DESCRIPTION	STATION/OFFSET	REMARKS
Water Valve	47+40.86, 42.15' Rt.	Adjust
Water Valve	50+63.40, 39.25' Rt.	Adjust
Water Valve	50+91.58, 41.96' Rt.	Adjust

LEGEND

- Mill and Overlay
- Pavement/Walk Removal
- Pavement Widening
- Full Depth Pavement Patch

21ST STREET NORTH IMPROVEMENTS

STA. 45+00 TO STA. 51+00

PROJECT NO. 87 N-0190-01 SEDGWICK CO.
M K E C ENGINEERING CONSULTANTS, INC.
WICHITA, KANSAS

DESIGNED BY:	LKC	CHECKED BY:	JRA
DRAWN BY:	DPG	DATE:	9/30/04
		SHEET	9 OF 96

J:\CIVIL\04178\DWG\PAV\04178E05.dwg 5/18/2005 4:46:50 PM CST
KANSAS DEPARTMENT OF TRANSPORTATION