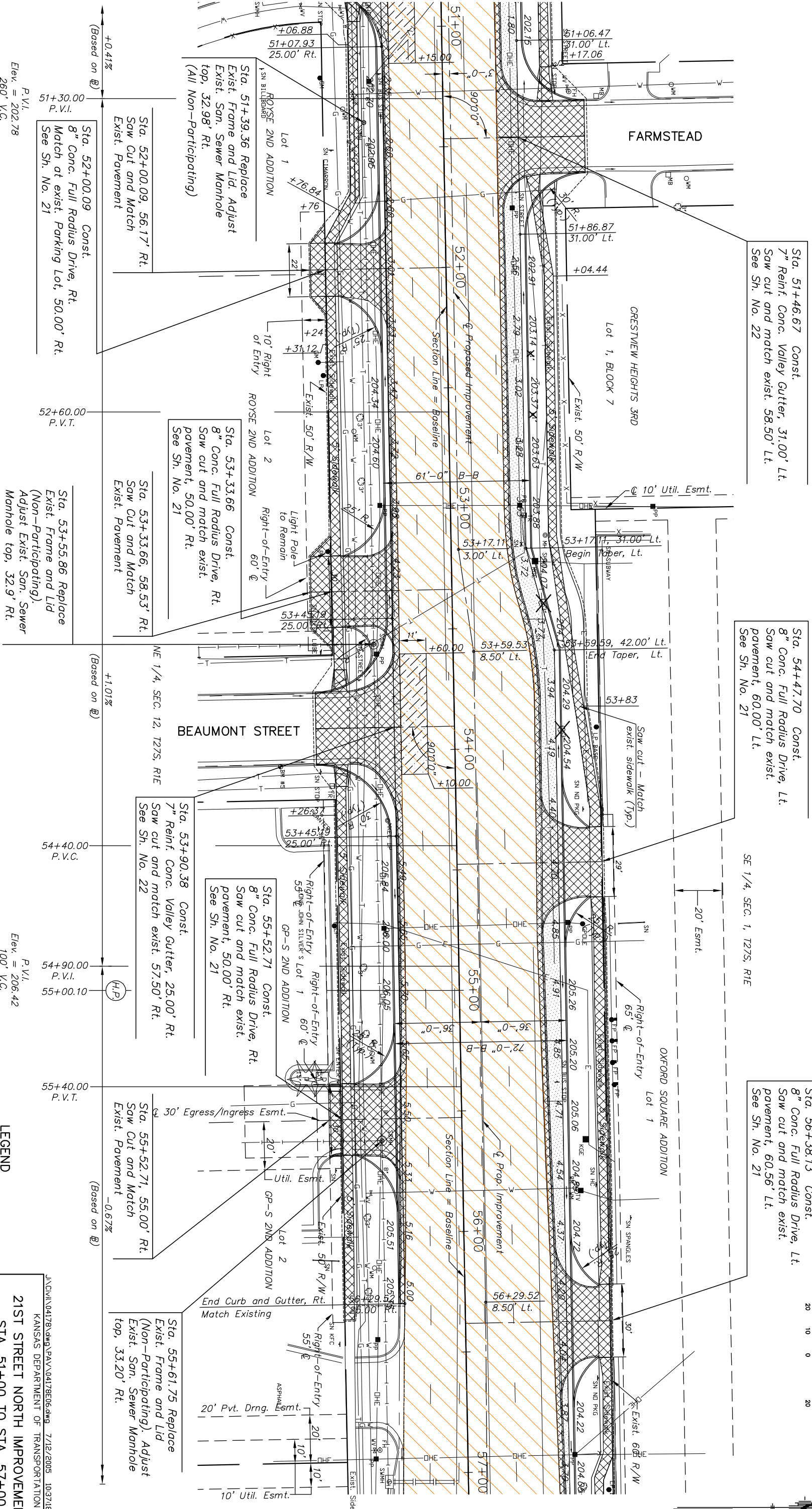
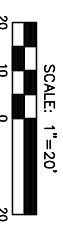


STATE	PROJECT NO.	YEAR	SHEET NO.	TOTAL SHEETS
KANSAS	87 N-0190-01	2005	10	96



Sta. 51+46.67 Const.
7" Reinf. Conc. Valley Gutter, 31.00' Lt.
Saw cut and match exist. 58.50' Lt.
See Sh. No. 22

Sta. 54+47.70 Const.
8" Conc. Full Radius Drive, Lt.
Saw cut and match exist.
pavement, 60.00' Lt.
See Sh. No. 21

Sta. 56+38.13 Const.
8" Conc. Full Radius Drive, Lt.
Saw cut and match exist.
pavement, 60.56' Lt.
See Sh. No. 21

Sta. 51+39.36 Replace
Exist. Frame and Lid. Adjust
Exist. San. Sewer Manhole
top, 32.98' Rt.
(All Non-Participating)

Sta. 53+33.66 Const.
8" Conc. Full Radius Drive, Rt.
Saw cut and match exist.
pavement, 50.00' Rt.
See Sh. No. 21

Sta. 55+52.71 Const.
8" Conc. Full Radius Drive, Rt.
Saw cut and match exist.
pavement, 50.00' Rt.
See Sh. No. 21

Sta. 55+52.71, 55.00' Rt.
Saw Cut and Match
Exist. Pavement

Sta. 55+61.75 Replace
Exist. Frame and Lid
(Non-Participating). Adjust
Exist. San. Sewer Manhole
top, 33.20' Rt.

Sta. 52+00.09 Const.
8" Conc. Full Radius Drive, Rt.
Match at exist. Parking Lot, 50.00' Rt.
See Sh. No. 21

Sta. 53+55.86 Replace
Exist. Frame and Lid
(Non-Participating).
Adjust Exist. San. Sewer
Manhole top, 32.9' Rt.

P.V.I.
Elev. = 202.78
260' V.C.

P.V.I.
Elev. = 206.42
100' V.C.

(Based on @)

(Based on @)

UTILITY ADJUSTMENTS	
DESCRIPTION	STATION/OFFSET
Water Valve	51+27.58, 37.46' Rt. Adjust
Water Valve	55+83.41, 38.21' Rt. Adjust

BM#5 Square cut on top of curb, south
of 21st St., and east curb of Beaumont St.
Sta. 54+05.84, 72.39' Rt. Elev. 206.60

LEGEND	
	Mill and Overlay
	Pavement/Walk Removal
	Pavement Widening
	Full Depth Pavement Patch

J:\DWG\104178\DWG\PAVA\104178E06.dwg 7/12/2005 10:37:18 AM CST
KANSAS DEPARTMENT OF TRANSPORTATION

21ST STREET NORTH IMPROVEMENTS
STA. 51+00 TO STA. 57+00

PROJECT NO. 87 N-0190-01 SEDGWICK CO.
M K E C ENGINEERING CONSULTANTS, INC.
WICHITA, KANSAS

DESIGNED BY:	LKC	CHECKED BY:	JRA
DRAWN BY:	DPG	DATE:	9/20/04

SHEET 10 OF 96