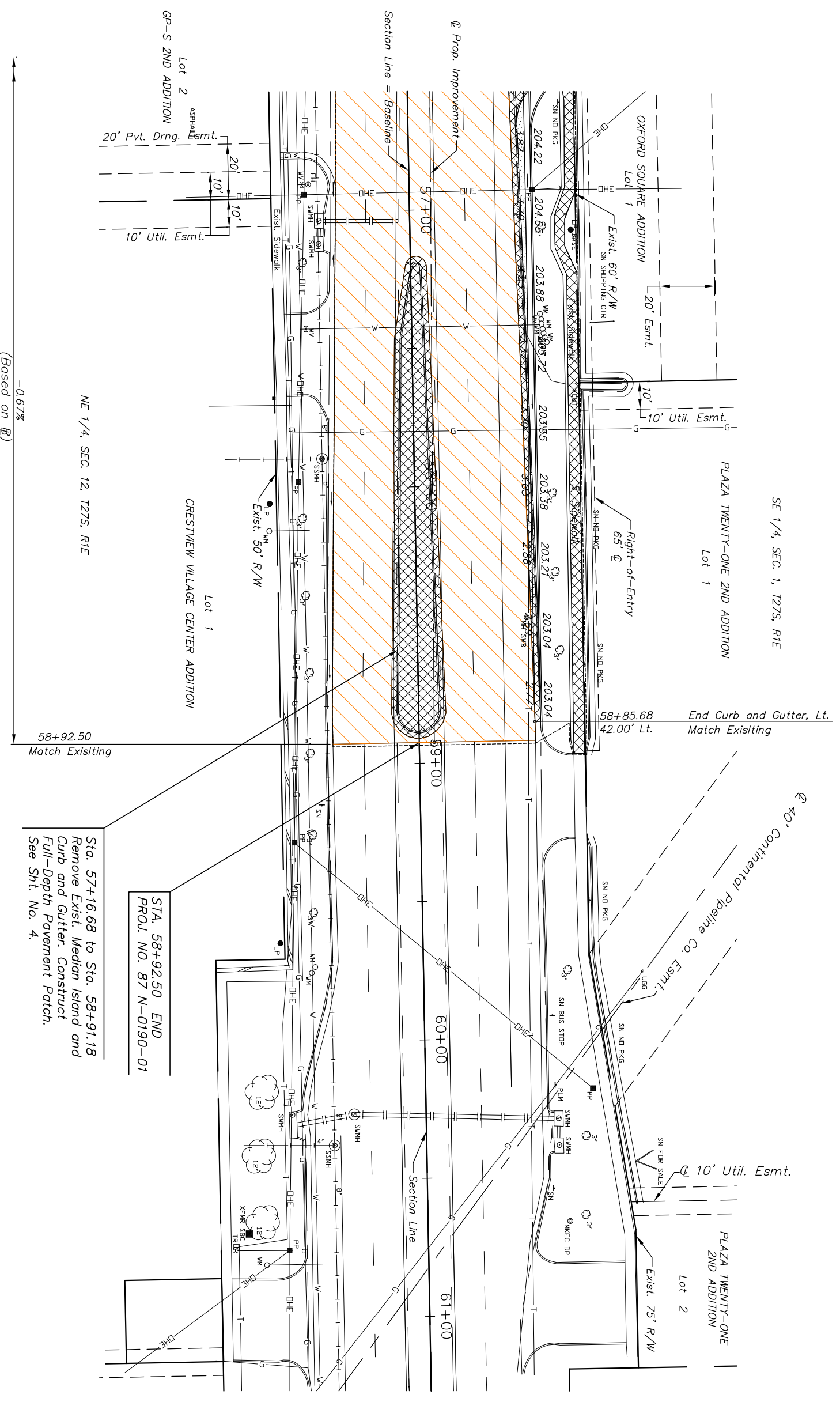


STATE	PROJECT NO.	YEAR	SHEET NO.	TOTAL SHEETS
KANSAS	87 N-0190-01	2005	11	96

- P.I. Sta. 63+20.78 = NE Cor., Sec. 12, T27S, R1E
1. Found 5/8" Iron Pipe and Thimble
  - 2.
  - 3.
  - 4.
  - 5.



(Based on @)

Sta. 57+16.68 to Sta. 58+91.18  
Remove Exist. Median Island and  
Curb and Gutter. Construct  
Full-Depth Pavement Patch.  
See Sht. No. 4.

STA. 58+92.50 END  
PROJ. NO. 87 N-0190-01

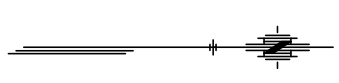
**LEGEND**

- Mill and Overlay
- Pavement/Walk Removal
- Pavement Widening
- Full Depth Pavement Patch

Northeast Corner, Sec. 12, T27S, R1E  
Sta. 63+20.78, 0.00' Rt.

1. Found 5/8" Iron Pipe and Thimble
- 2.
- 3.
- 4.
- 5.

BM#6 COW Benchmark, SW corner of intersection,  
21st & Woodlawn, on top of conc. retaining wall.  
Sta. 62+45.20, 75.20' Rt. Elev. 203.78



J:\CIVIL\04178\DWG\PAV\04178E07.dwg 5/18/2005 3:46:58 PM CST

KANSAS DEPARTMENT OF TRANSPORTATION

**21ST STREET NORTH IMPROVEMENTS**

STA. 57+00 TO STA. 61+00

PROJECT NO. 87 N-0190-01 SEDGWICK CO.

M K E C ENGINEERING CONSULTANTS, INC.  
WICHITA, KANSAS

DESIGNED BY:	LKG	CHECKED BY:	JRA
DRAWN BY:	DPG	DATE:	3/17/05
		SHEET	11 OF 96