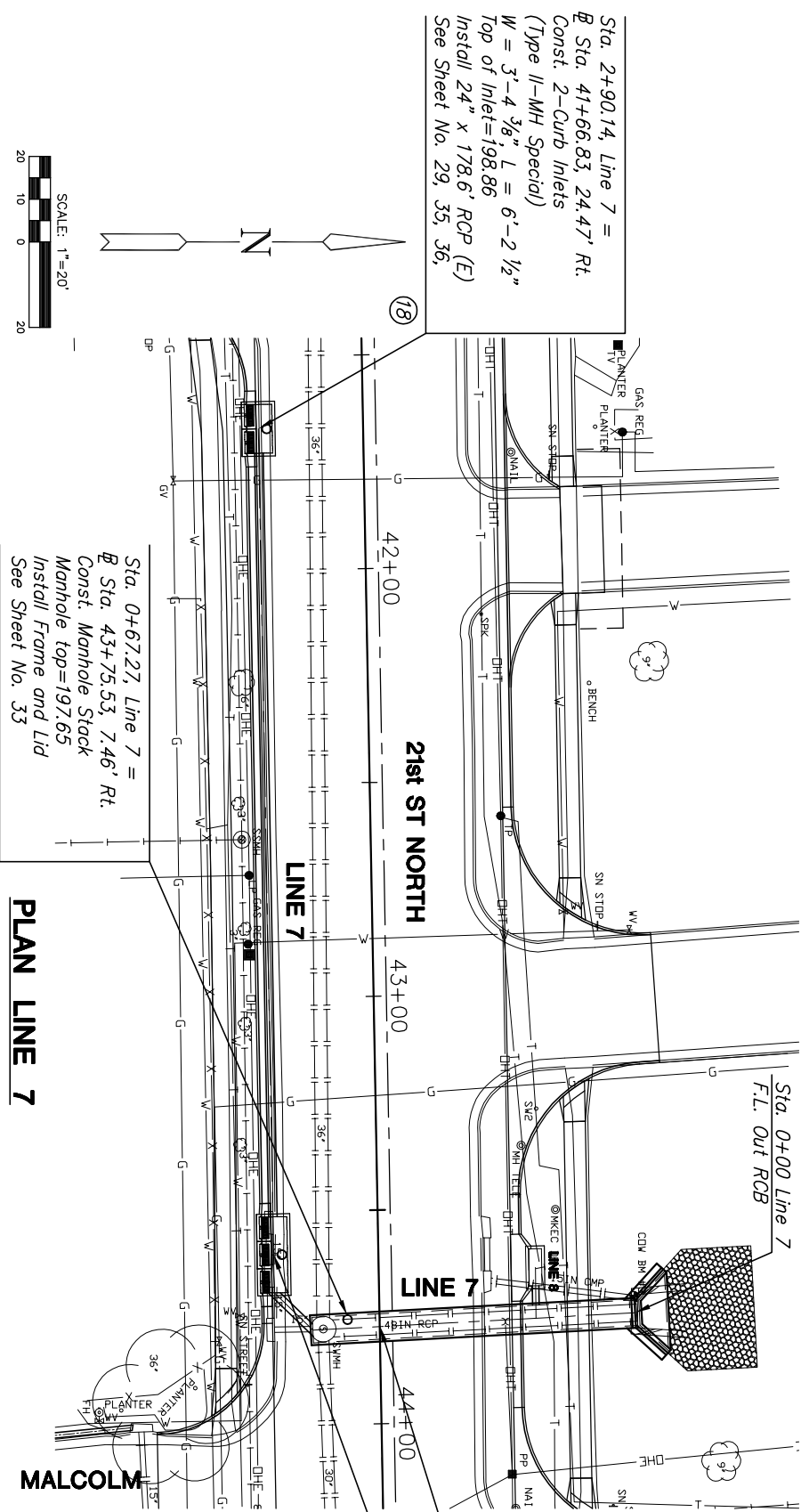


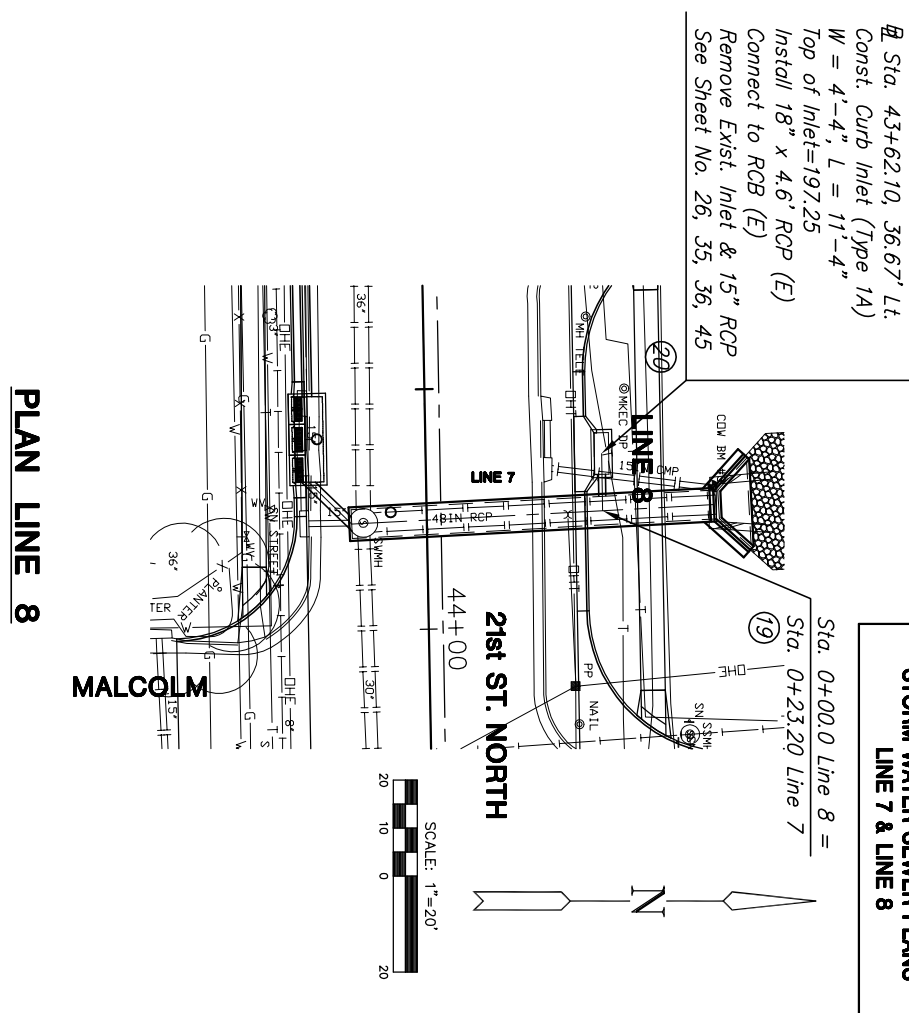
**21ST STREET NORTH IMPROVEMENTS
STORM WATER SEWER PLANS
LINE 7 & LINE 8**



Sta. 2+90.14, Line 7 =
 @ Sta. 41+66.83, 24.47' Rt.
 Const. 2-Curb Inlets
 (Type II-MH Special)
 W = 3'-4 3/8", L = 6'-2 1/2"
 Top of Inlet=198.86
 Install 24" x 178.6' RCP (E)
 See Sheet No. 29, 35, 36,

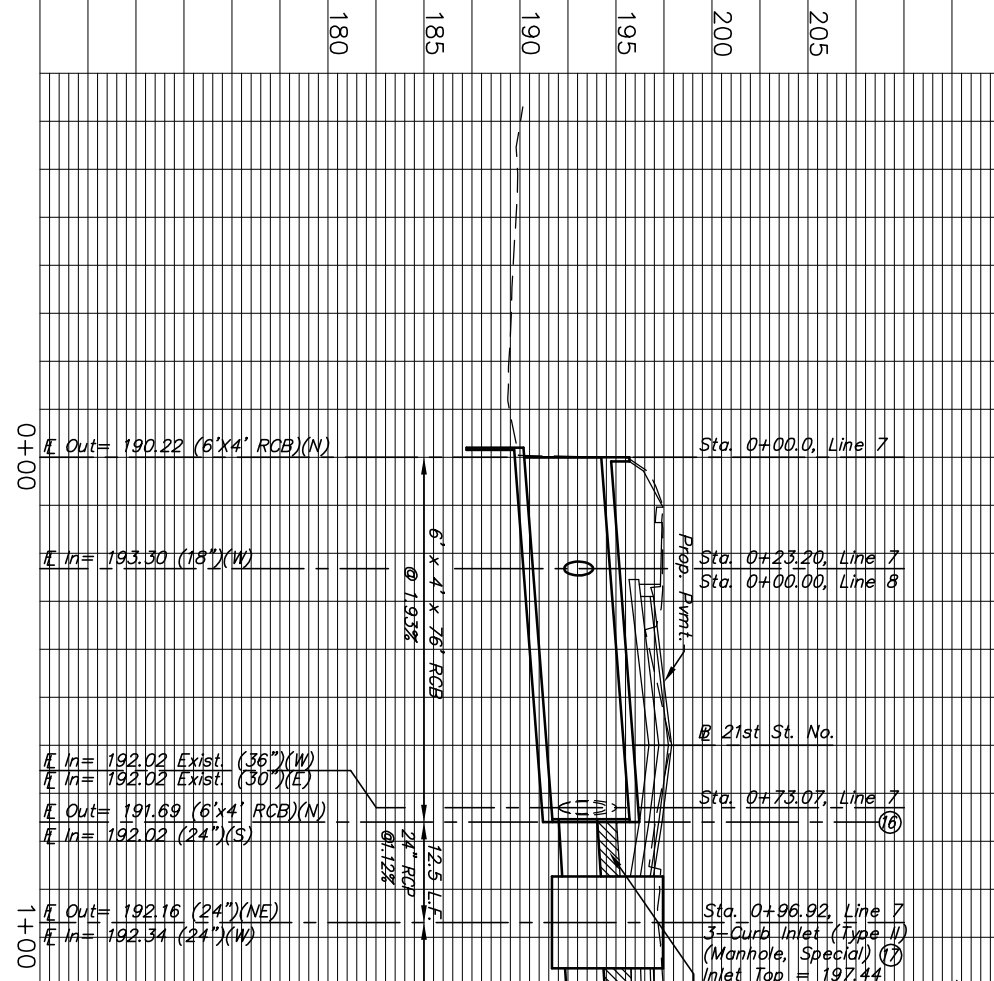
Sta. 0+59+87 Line 7 =
 @ Sta. 43+77.27 Const.
 6'x4'x76' RCB
 w/Wingwall (N) and
 Permanent Plug (S)
 Connect exist. 36" RCP (W)
 and 30" RCP (E)
 Remove exist. manhole and
 48" x 72" RCP (N) with headwall
 See Sheet No. 37, 38, 40, 45

Sta. 0+96.92, Line 7 =
 @ Sta. 43+60.05, 24.47' Rt.
 Const. 3-Curb Inlets
 (Type II-MH Special)
 W = 3'-4 3/8", L = 6'-2 1/2"
 Top of Inlet=197.44
 Install 24" x 12.5' RCP (NE)
 Connect to RCB(NE)
 Remove exist. 3-curb inlets
 and 15" Pipe (W & N)
 See Sheet No. 30, 35, 36, 45



Sta. 0+11.85, Line 8 =
 @ Sta. 43+62.10, 36.67' Lt.
 Const. Curb Inlet (Type 1A)
 W = 4'-4", L = 11'-4"
 Top of Inlet=197.25
 Install 18" x 4.6' RCP (E)
 Connect to RCB (E)
 Remove Exist. Inlet & 15" RCP
 See Sheet No. 26, 35, 36, 45

Sta. 0+00.0 Line 8 =
 @ Sta. 0+23.20 Line 7



Sta. 0+00.0, Line 7
 F. Out= 190.22 (6'x4' RCB)(N)
 F. In= 193.30 (18")(W)

Sta. 0+23.20, Line 7
 Sta. 0+00.00, Line 8

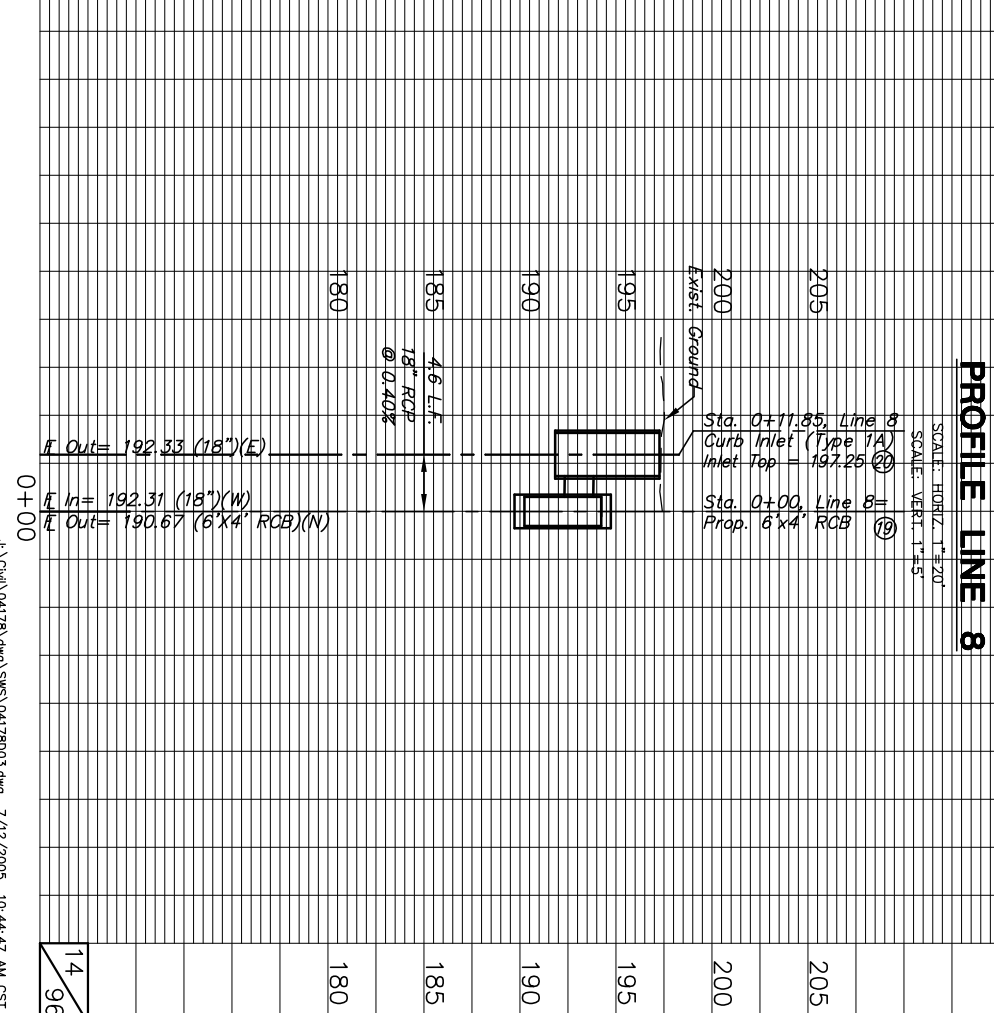
21st St. No.

Sta. 0+73.07, Line 7

Sta. 0+96.92, Line 7
 3-Curb Inlet (Type II)
 (Manhole, Special) (18)
 Inlet Top = 197.44

Sta. 2+90.14, Line 7
 2-Curb Inlet (Type II)
 (Manhole, Special) (18)
 Inlet Top = 198.86

Annotations include: 21st St. No., Sta. 0+00.0, Line 7, Sta. 0+23.20, Line 7, Sta. 0+00.00, Line 8, Sta. 0+73.07, Line 7, Sta. 0+96.92, Line 7, Sta. 2+90.14, Line 7, and various inlet and RCP details.



Sta. 0+00, Line 8
 F. Out= 190.67 (6'x4' RCB)(N)
 F. In= 192.31 (18")(W)

Sta. 0+11.85, Line 8
 Curb Inlet (Type 1A)
 Inlet Top = 197.25 (19)

21st St. No.

Sta. 0+00, Line 8
 Prop. 6'x4' RCB (19)

Annotations include: 21st St. No., Sta. 0+00, Line 8, Sta. 0+11.85, Line 8, and various inlet and RCP details.