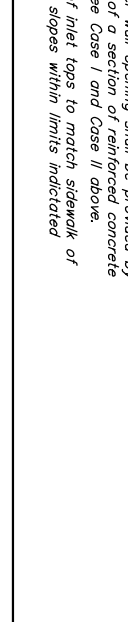
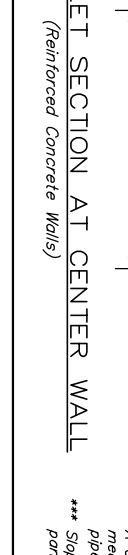
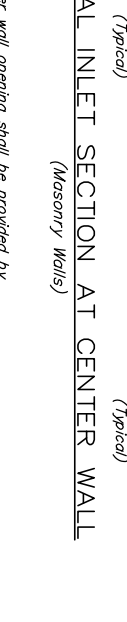
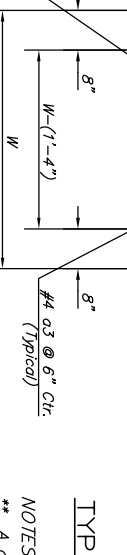
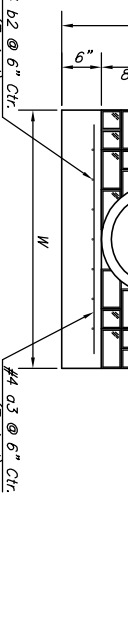
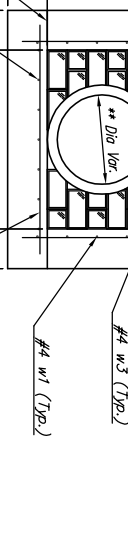
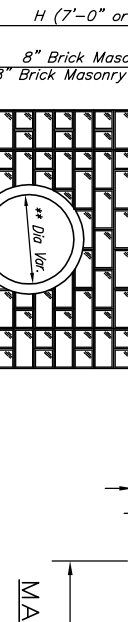
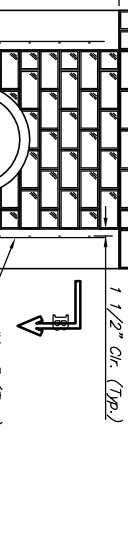
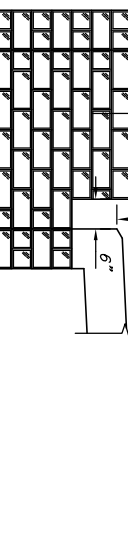
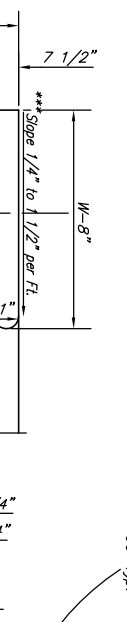
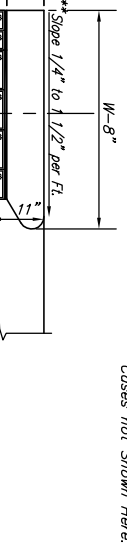
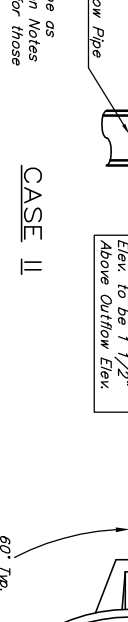
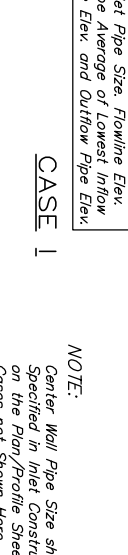
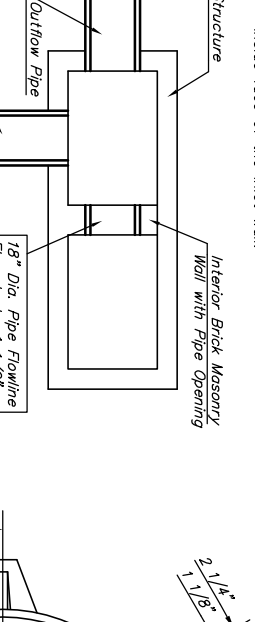
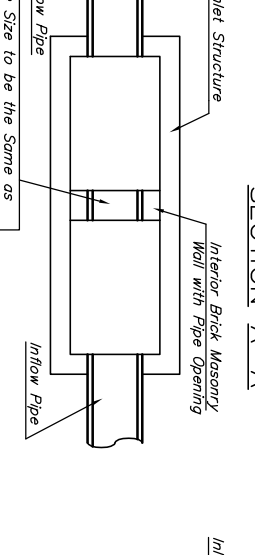
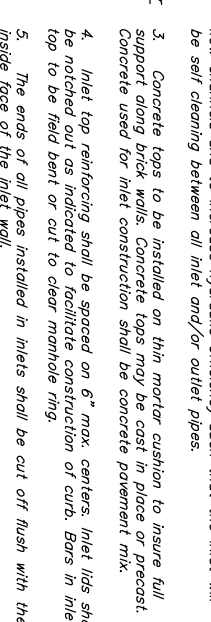
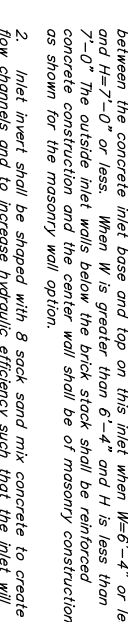
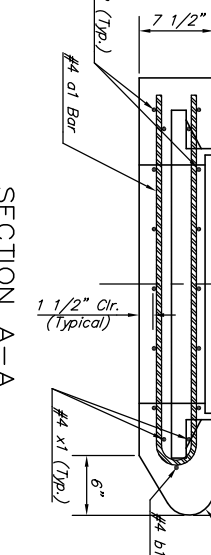
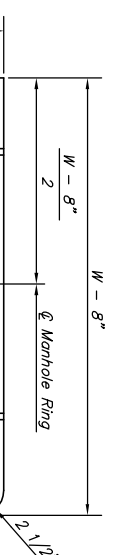
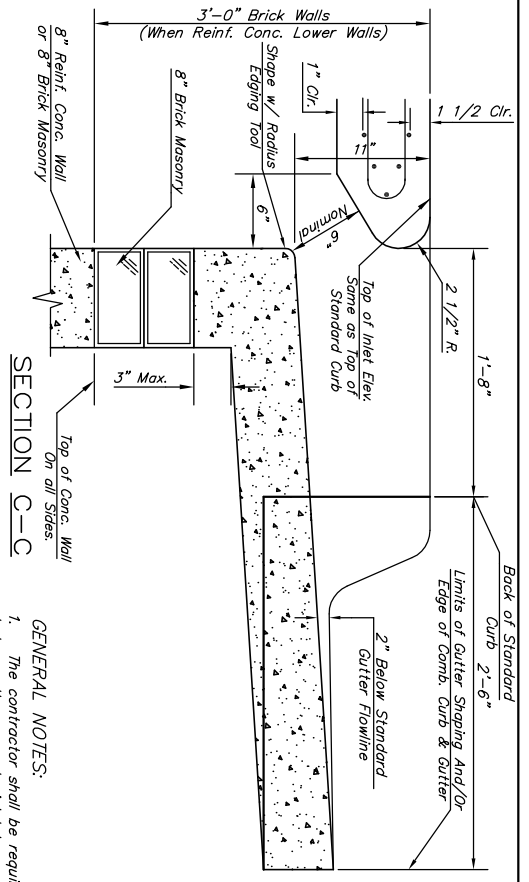


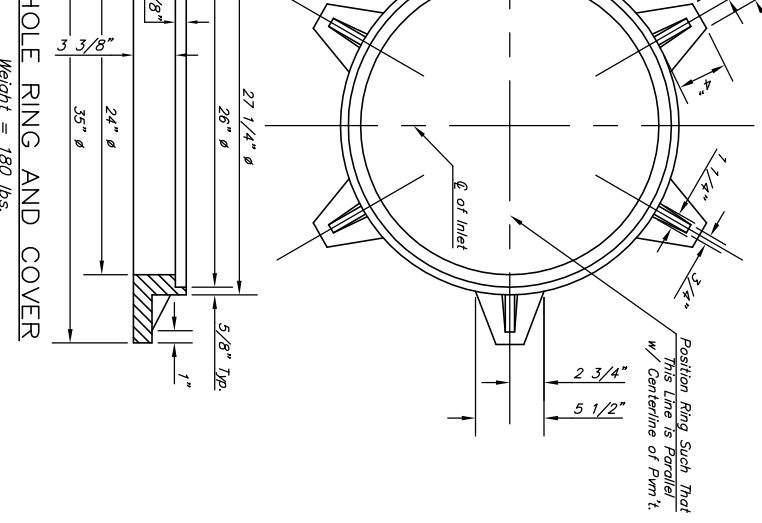
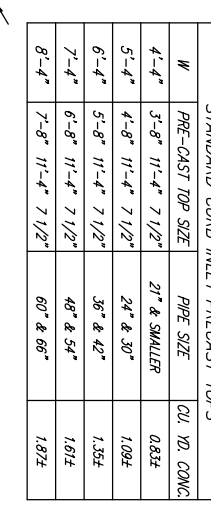
STATE	PROJECT NO.	YEAR	SHEET NO.	SHEETS
KANSAS	87 N-0190-01	2005	26	96

PRECAST SLAB AND FLOOR REINFORCING											
W = 4'-4"		W = 5'-4"		W = 6'-4"		W = 7'-4"		W = 8'-4"		W = 9'-4"	
MARK	SIZE	NO.	LENGTH	NO.	LENGTH	NO.	LENGTH	NO.	LENGTH	NO.	LENGTH
*01	#4	13	6'-7"	13	8'-7"	13	10'-7"	13	12'-7"	13	14'-0"
*02	#4	4	6'-0"	4	8'-0"	4	10'-0"	4	12'-0"	4	14'-0"
*03	#4	23	4'-1"	23	5'-1"	23	6'-1"	23	7'-1"	23	8'-1"
*04	#4	1	9'-9"	1	9'-9"	1	9'-9"	1	9'-9"	1	9'-9"
*05	#4	23	11'-1"	29	11'-1"	35	11'-1"	41	11'-1"	47	11'-1"
*06	#4	16	3'-10"	16	4'-2"	16	4'-2"	16	4'-10"	16	5'-2"

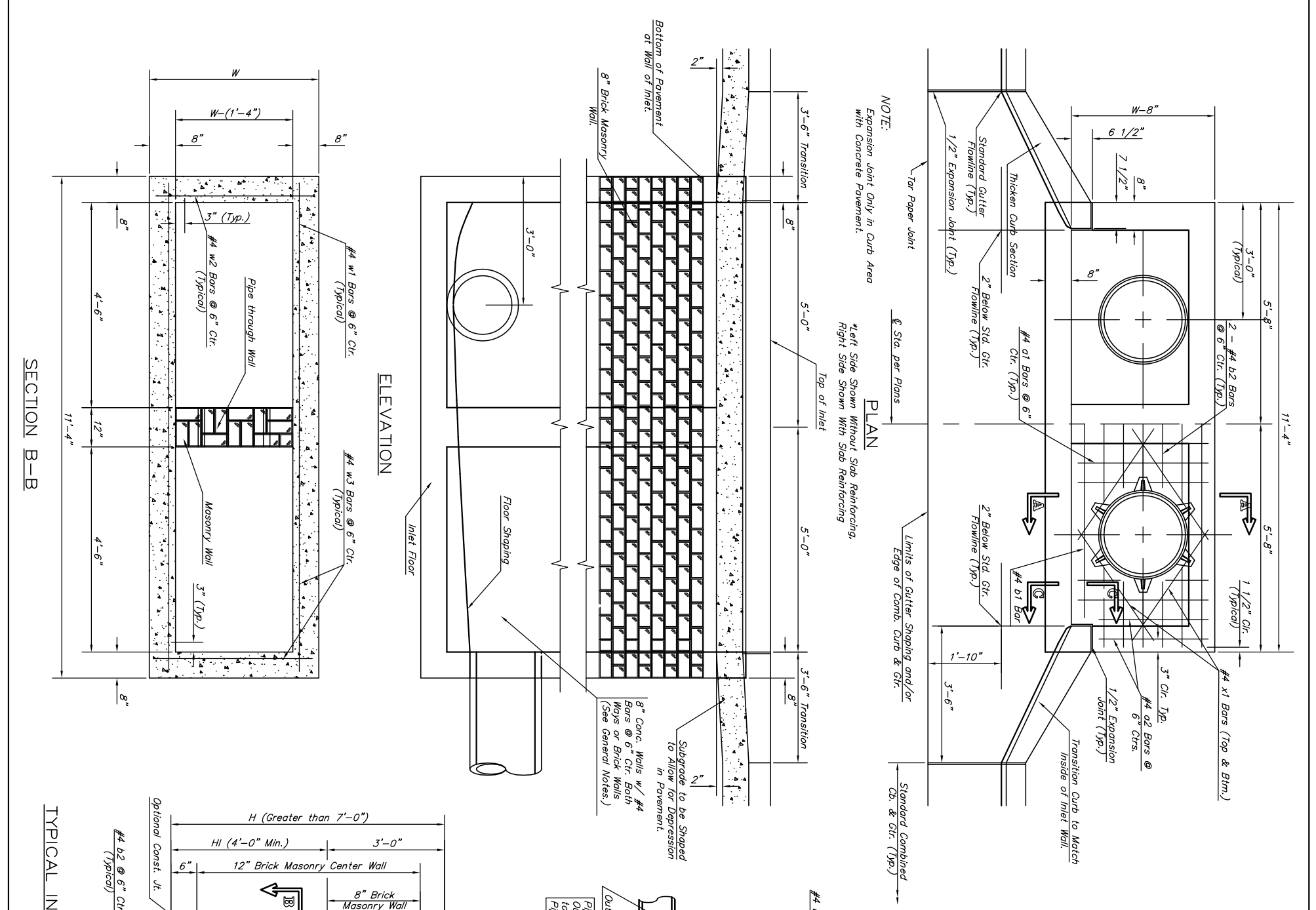
WALL REINFORCING											
W = 4'-4"		W = 5'-4"		W = 6'-4"		W = 7'-4"		W = 8'-4"		W = 9'-4"	
MARK	SIZE	NO.	LENGTH	NO.	LENGTH	NO.	LENGTH	NO.	LENGTH	NO.	LENGTH
W1	#4	11	11'-1"	11	11'-1"	11	11'-1"	11	11'-1"	11	11'-1"
W2	#4	11	11'-1"	11	11'-1"	11	11'-1"	11	11'-1"	11	11'-1"
W3	#4	52	50	50	50	50	50	50	50	50	50



STANDARD CURB INLET PRECAST TOPS											
W	PRE-CAST TOP SIZE	PIPE SIZE	CU. YD. CONC.								
4'-4"	3'-8" 11'-4" 7 1/2"	21" & SMALLER	0.834								
5'-4"	4'-8" 11'-4" 7 1/2"	24" & 30"	1.004								
6'-4"	5'-8" 11'-4" 7 1/2"	36" & 42"	1.354								
7'-4"	6'-8" 11'-4" 7 1/2"	48" & 54"	1.614								
8'-4"	7'-8" 11'-4" 7 1/2"	60" & 66"	1.874								



MANHOLE RING AND COVER
 Weight = 180 lbs.
 *See City of Wichita Standard Manhole Ring and Cover Detail Sheet for Cover Details to Be Used With Inlet Frame.
 J:\CWN\04178.dwg\DETAILS\Inlet_Type10-2.dwg 03/24/2005 09:25:59 AM CS
 KANSAS DEPARTMENT OF TRANSPORTATION
 STANDARD TYPE 1A CURB INLET
 OPENING = 6" x 10'-0"
 M K E C ENGINEERING CONSULTANTS, INC.
 WICHITA, KANSAS
 SEDGWICK CO.
 PROJECT NO. 87 N-0190-01
 DESIGNED BY: RJA
 CHECKED BY: RJA
 DRAWN BY: WJU
 DATE: 2004
 SHEET 26 OF 96



NOTE: Expansion Joint Only in Curb Area with Concrete Pavement.
 *Left Side Shown Without Slab Reinforcing, Right Side Shown With Slab Reinforcing.
 NOTE: Center Wall Pipe Size shall be as Specified in Inlet Construction Notes on the Plan/Profile Sheets for those Cases not Shown Here.
 ** A center wall opening shall be provided by means of a section of reinforced concrete pipe. See Case I and Case II above.
 *** Slope of inlet tops to match sidewalk or parking slopes within limits indicated.