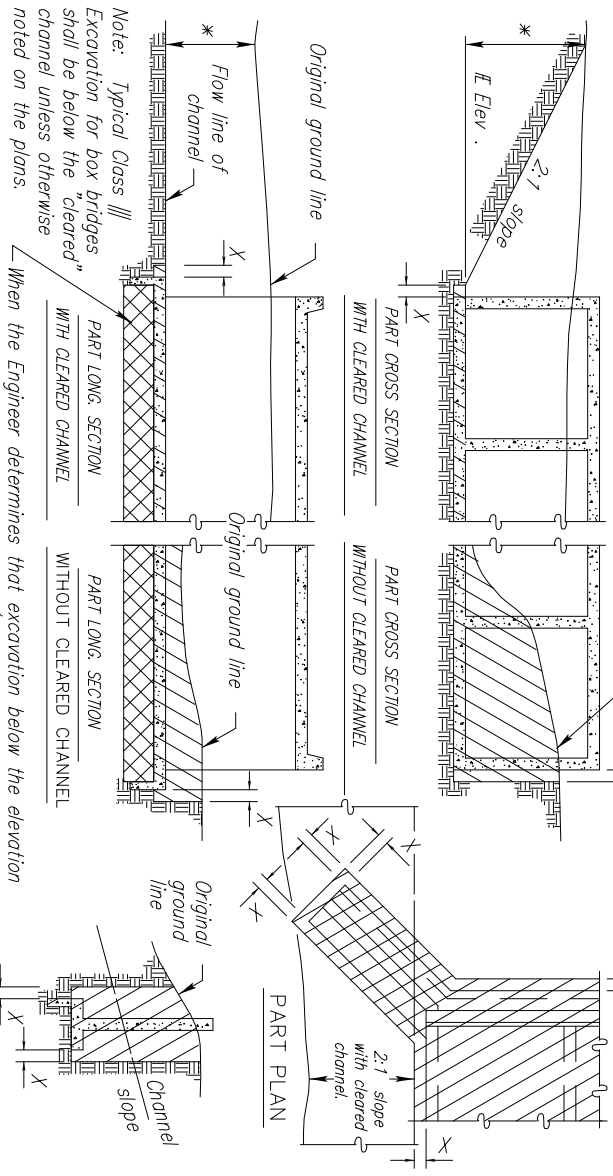
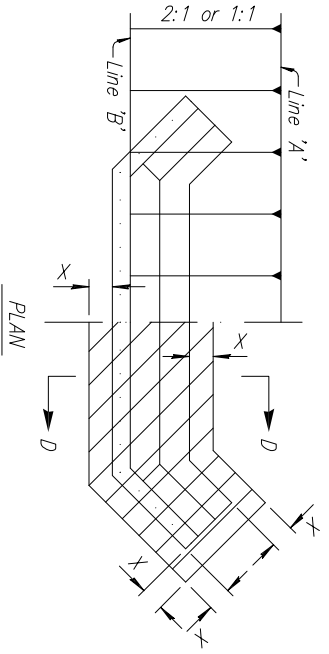


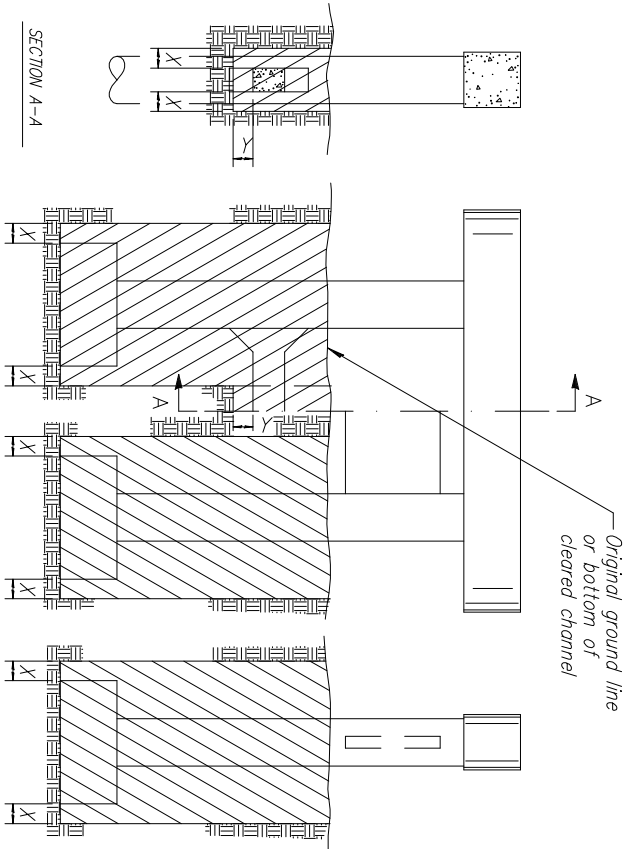
\* Note: The Grading Contractor shall excavate the channel to the limits shown prior to the construction of the box bridge, unless otherwise noted in the plans.



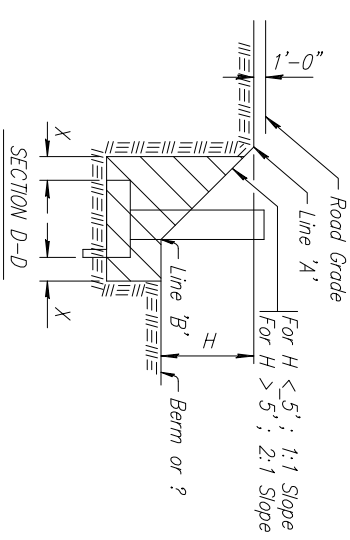
EXCAVATION DETAILS FOR REINFORCED CONCRETE BOX CULVERT  
 Note: Excavation for culverts less than bridge length shall not be paid for as Class III Excavation but shall be subsidiary to Class AAA Concrete.



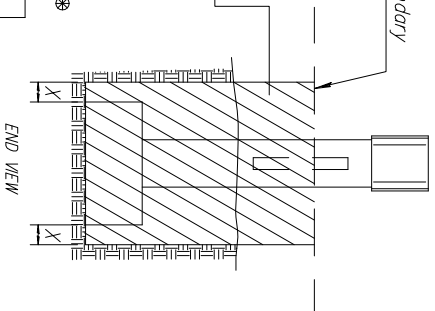
EXCAVATION DETAILS FOR ABUTMENTS WITH FLARED WINGWALLS  
 (Toe wall excavation shall be subsidiary)



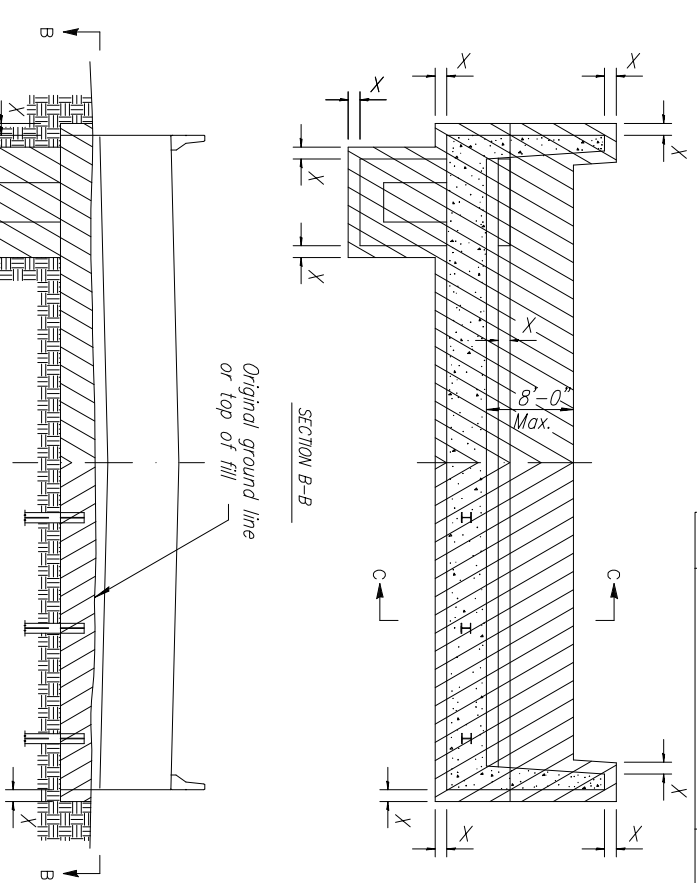
EXCAVATION DETAILS FOR TYPICAL PIERS  
 See detail when rock or shale (rock) is encountered.



Note: Class II Excavation includes the entire volume of whatever nature found below the "Excavation Boundary Plane" within the limits specified for measurement. This may include water or oil.  
 CLASS II EXCAVATION QUANTITIES  
 See detail when rock or shale (rock) is encountered.

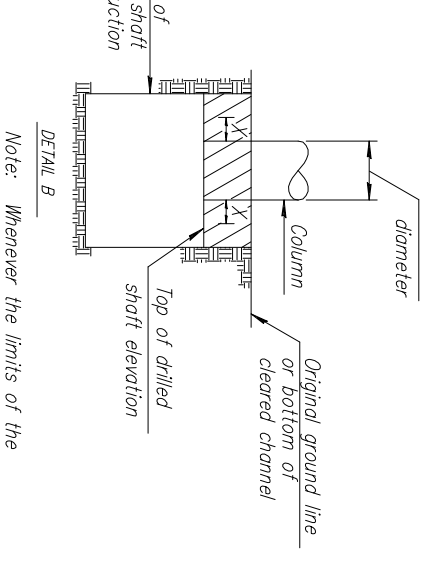
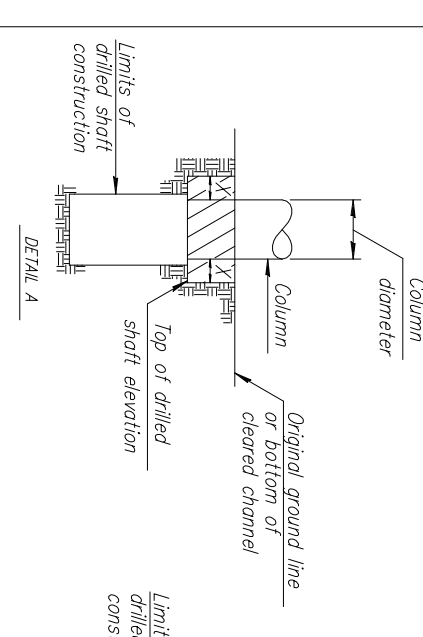
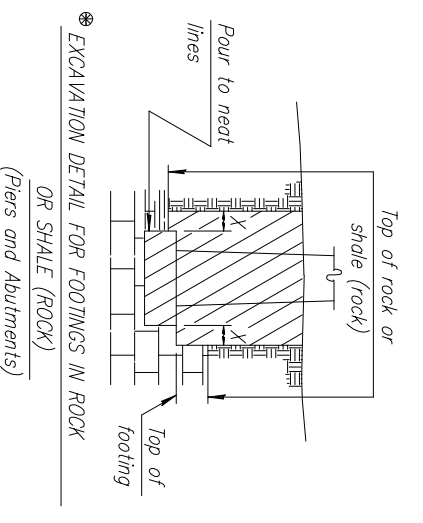


See detail when rock or shale (rock) is encountered.



Note: Bridge Contractor shall finish the embankment and berms after the construction of the abutment and dispose of any excess material as approved by the Engineer.  
 Note: Any steeking required shall be subsidiary to the bid item for Excavation.  
 Grading Contractor to complete embankment to this profile prior to construction of the abutment  
 No excavation beyond this line Road grade  
 8'-0" Max  
 Section C-C

EXCAVATION DETAILS FOR TYPICAL ABUTMENTS



Note: All bridge excavation shall be computed on the basis of the cross-hatch areas and boundary lines indicated on this sheet and the Excavation Boundary Plane on the Construction Layout.  
 Sides of trenches in hard or compacted soil including embankments shall be shored, sheeted, braced or otherwise supported when the trench is more than 5 feet in depth and 8 feet or more in length. In lieu of the shoring, the sides of the trench above the 5 foot level may be sloped to preclude collapse. The slope for average soils shall be 1:1. If the angle of repose of the soil is less, flatter slopes shall be required.

NO.	DATE	REVISIONS	BY	APP'D
1	4-6-90	Change limits of abutments	LRR	KFH
2	1-26-93	Add Class 2 & Flared Wing det.	LRR	KFH
3	7-26-94	Change limits of abutment	LRR	KFH
4	1-30-95	Drilled Shaft Excavation	LRR	KFH
5	8-12-95	Correct Section BB at abutment	LRR	KFH
6	4-10-02	Added "Foundation Stab." Note	RAM	KFH

A:\CIV\04178.dwg \R03\04\00.dwg 02/24/2005 02:13:12 PM CST  
 KANSAS DEPARTMENT OF TRANSPORTATION  
 BRIDGE EXCAVATION