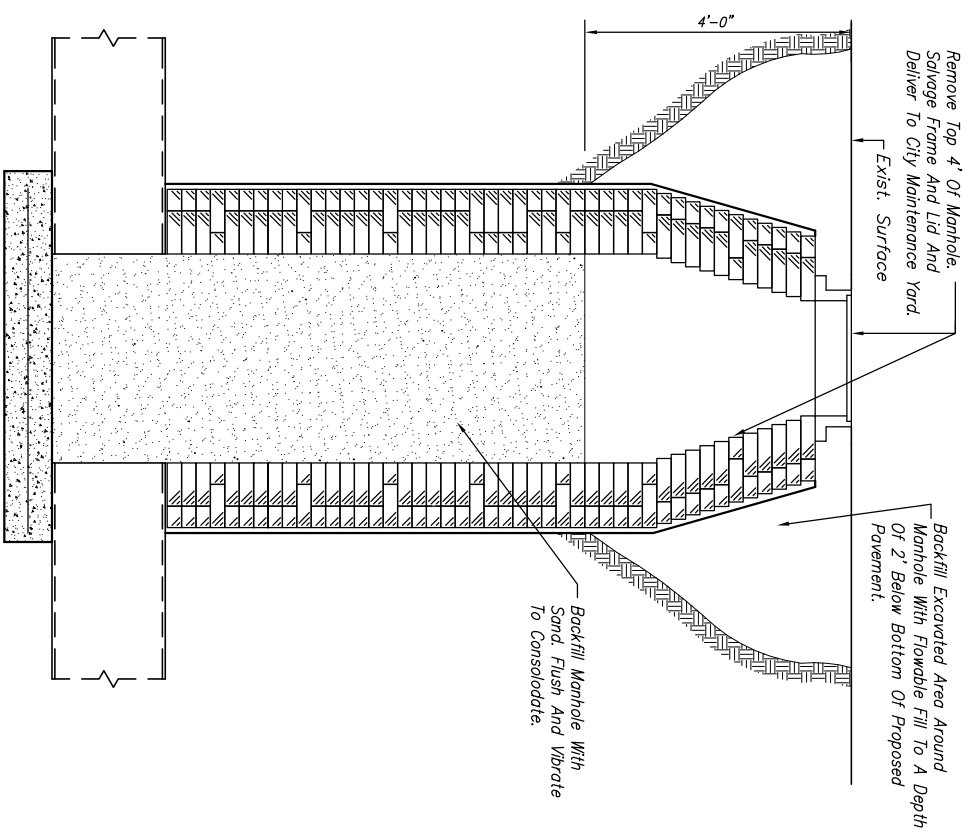


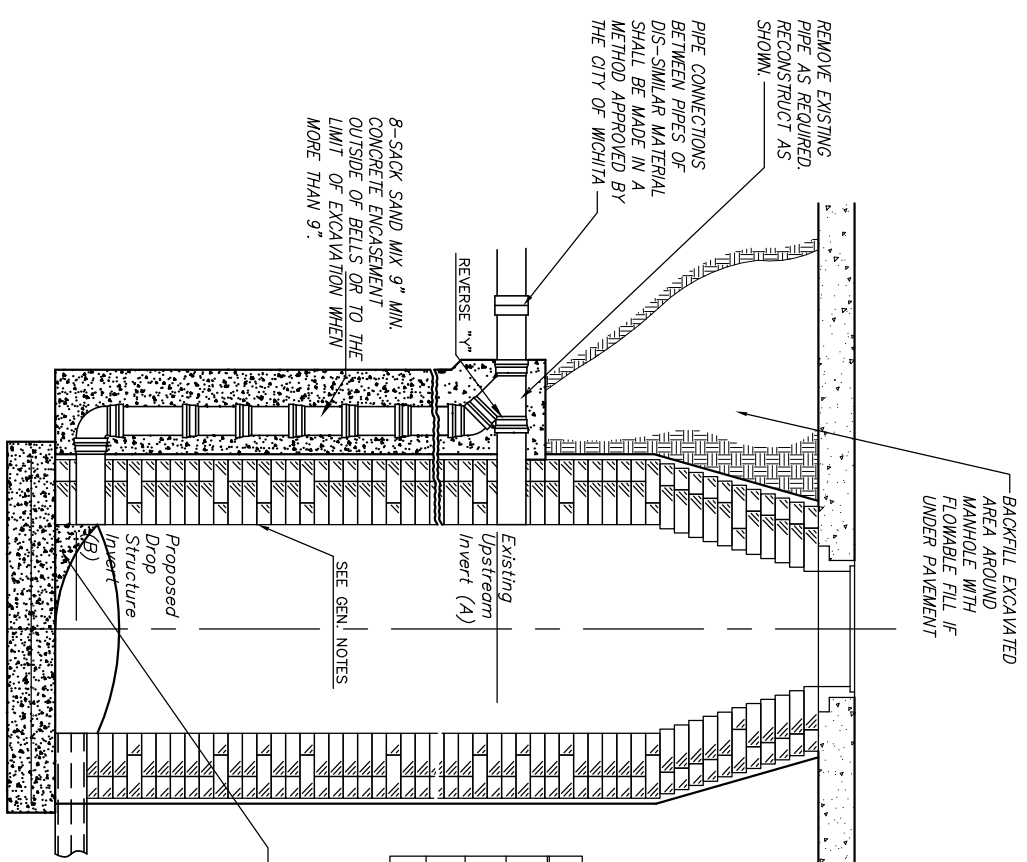
STATE	PROJECT NO.	YEAR	SHEET NO.	SHEETS
KANSAS	87 N-0190-01	2005	44	96

NOTE:
 WATERSTOP GASKETS SHALL BE USED WITH P.V.C. AND A.B.S. COMPOSITE PIPE. THE NEW PIPE SHALL BE GROUTED INTO THE OPENING USING AN APPROVED NONSHRINK GROUT FOR THE FULL MANHOLE WALL THICKNESS. THE EXTERIOR OF THE COMPLETED CONNECTION SHALL BE SEALED WITH AN APPROVED BITUMINOUS COATING SUCH THAT THE CONNECTION WILL BE WATER TIGHT.
 CONTRACTOR TO CONFIRM ELEVATIONS OF INVERTS PRIOR TO CONSTRUCTION.
 CONTRACTOR SHALL REPLACE LOOSE AND MISSING CEMENT MORTAR ON ALL EXPOSED SURFACES OF THE EXISTING MANHOLE.



MANHOLE REMOVAL DETAIL

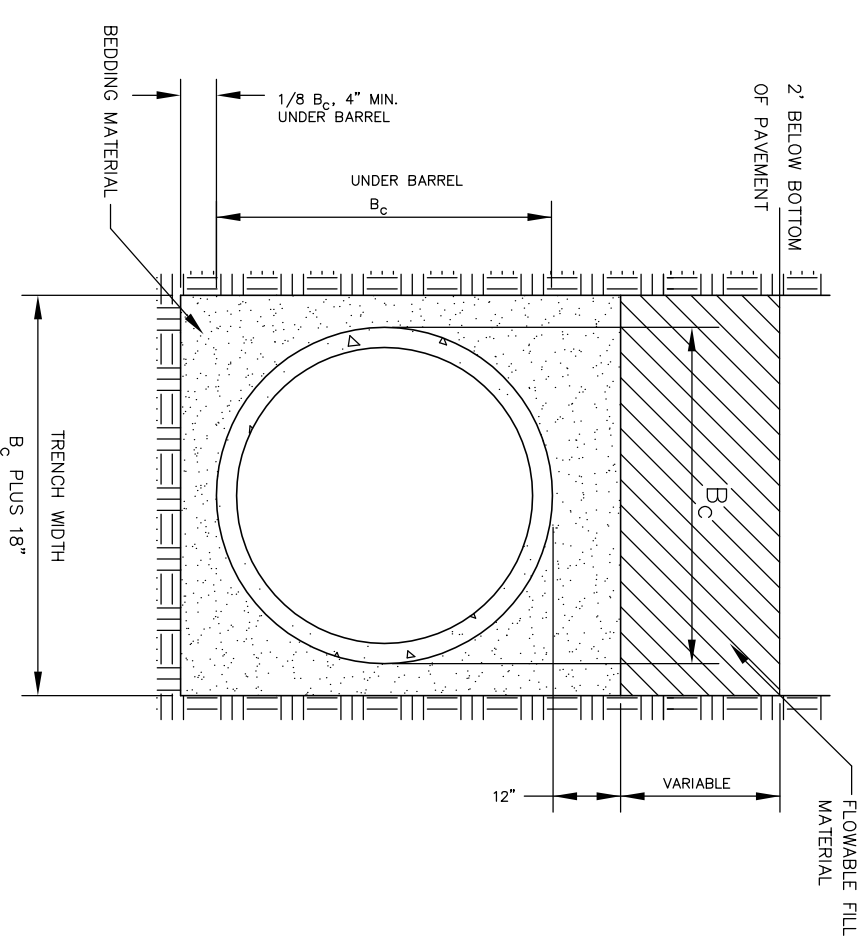
Note:
 Contractor May Completely Remove Manhole At No Additional Cost To Owner.
 Contractor Shall Plug Open Ends Of Pipe To Be Abandoned When Cut Or Broken During Construction Activities.



MANHOLE	A	B	C
33+07.67	212.35	208.90	208.80
36+54.25	205.25	201.47	201.37
44+27.36	188.52	186.62	186.52
48+38.47	193.51	191.11	191.01

Remove and Replace Manhole Invert as Required to Provide the Proper Shape Flow Channels. If Existing Inverts are Properly Shaped, as Determined by the City's Inspector, Adjust Proposed Drop Structure Invert (B) Accordingly. (B) Must Never Be More Than 2'-0" Higher than (C).

DETAIL OF OUTSIDE DROP CONSTRUCTED ON EXISTING MANHOLE



DETAIL OF FLOWABLE FILL FOR SANITARY SEWER PIPE

J:\CIVIL\04178\dwg\DETAIL S\04178s.mxd 03/24/2005 09:11:51 PM CST
 KANSAS DEPARTMENT OF TRANSPORTATION
 MISCELLANEOUS DETAILS

PROJECT NO. 87 N-0190-01 SEDGWICK CO.
 M K E C ENGINEERING CONSULTANTS, INC.
 WICHITA, KANSAS

DESIGNED BY: JRA
 CHECKED BY: JRA
 DRAWN BY: WJU
 DATE: 3/17/05
 SHEET 44 OF 96