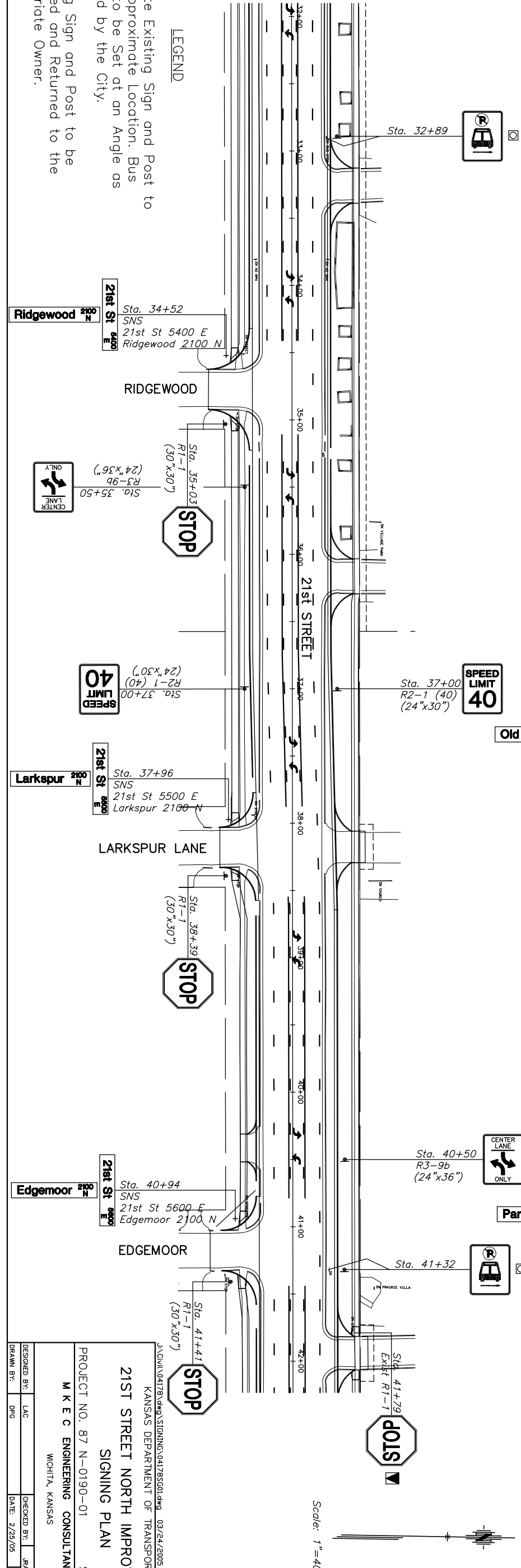
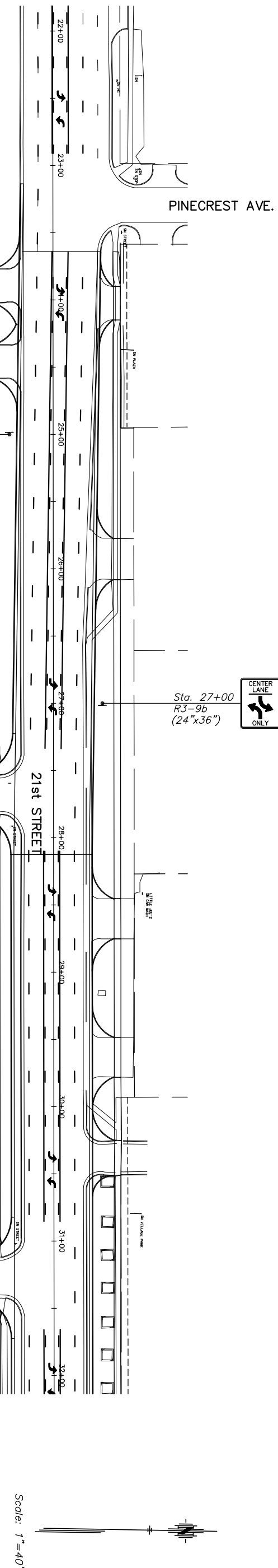


NOTE: REMOVE ALL EXISTING SIGNS WITHIN THE LIMITS OF CONSTRUCTION UNLESS NOTED OTHERWISE ON THE PLAN. ALL SIGNS SHOWN ON THE PLAN ARE TO BE NEW SIGNS ON NEW POSTS UNLESS NOTED OTHERWISE.

STATE	PROJECT NO.	YEAR	SHEET NO.	TOTAL SHEETS
KANSAS	87 N-0190-01	2005	59	96



**LEGEND**

- ☐ Relocate Existing Sign and Post to This Approximate Location. Bus Signs to be Set at an Angle as Directed by the City.
- ▼ Existing Sign and Post to be Removed and Returned to the appropriate Owner.

J:\DWG\04178.dwg, SIGNING\041785501.dwg, 03/24/2005, 10:05:52 AM CST  
 KANSAS DEPARTMENT OF TRANSPORTATION  
**21ST STREET NORTH IMPROVEMENTS**  
 SIGNING PLAN  
 PROJECT NO. 87 N-0190-01  
 M K E C ENGINEERING CONSULTANTS, INC.  
 WICHITA, KANSAS  
 SEDGWICK CO

DESIGNED BY:	LAG	CHECKED BY:	JRA
DRAWN BY:	PGC	DATE:	2/25/05
		SHEET	59 OF 96