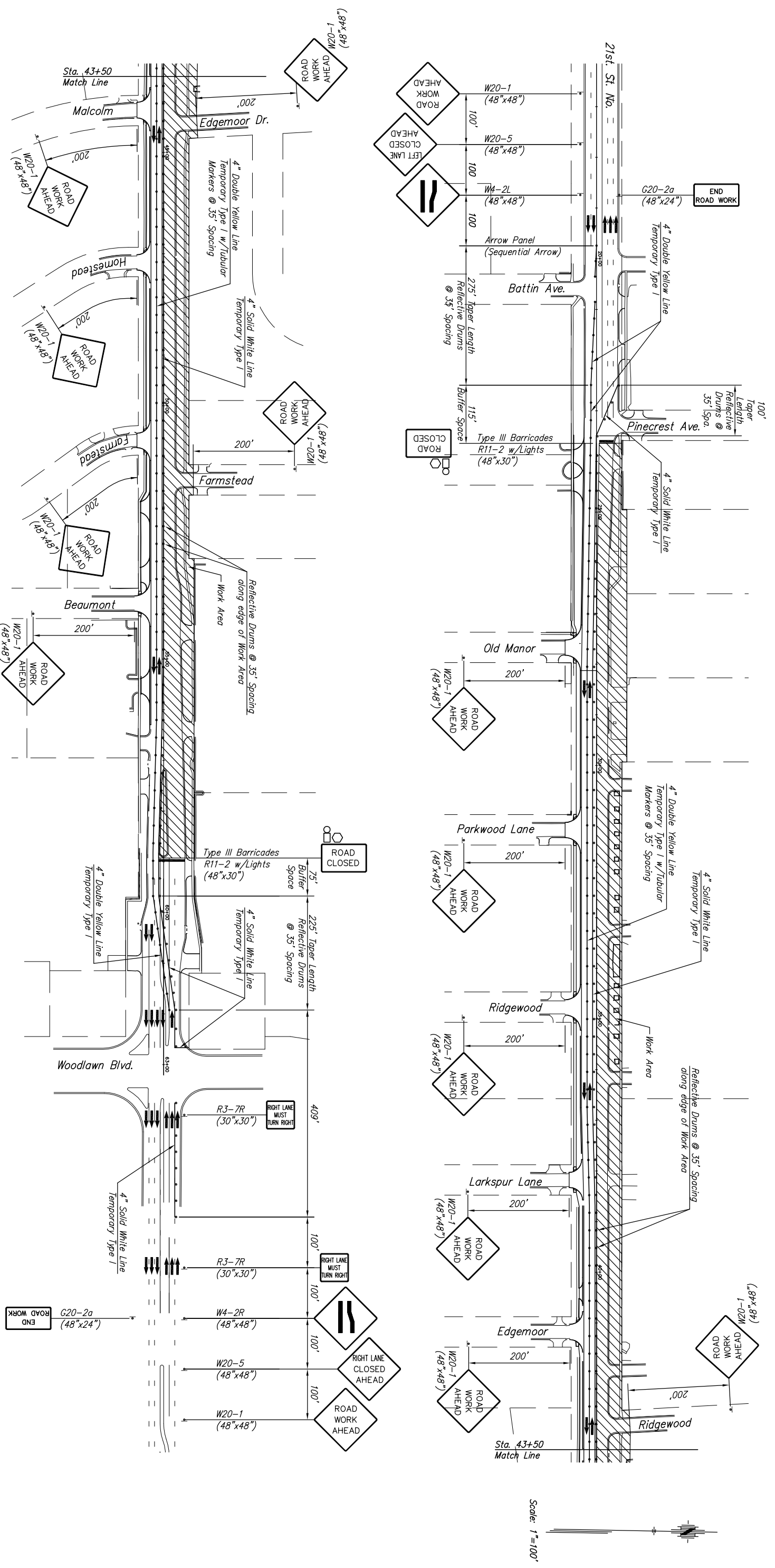
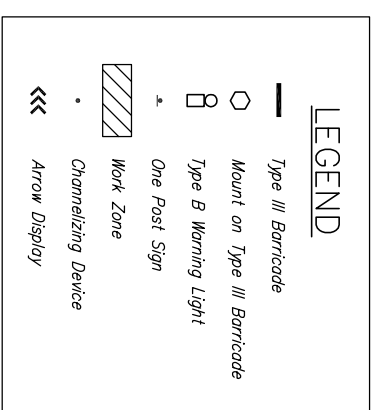


STATE	PROJECT NO.	YEAR	SHEET NO.	SHEETS
KANSAS	87 N-0190-01	2005	66	96



Scale: 1"=100'

**GENERAL NOTES:**  
 Refer to Std. TE710, sheet 70, for identification of signs for handling traffic through construction.  
 Refer to Std. TE700, sheet 68, for dimensions.  
 Paving operations will be phased at entrances to allow continued use of the points of access.  
 Refer to Typical Entrance and Side Street Closure details for entrance and side street traffic control as necessary.



KANSAS DEPARTMENT OF TRANSPORTATION  
**21ST STREET NORTH IMPROVEMENTS**  
 TRAFFIC CONTROL  
 PHASE 3

PROJECT NO. 87 N-0190-01  
 SEDGWICK CO.  
 M K E C ENGINEERING CONSULTANTS, INC.  
 WICHITA, KANSAS

DESIGNED BY: LAC	CHECKED BY: JRA
DRAWN BY: WJW	DATE: 2/21/05
	SHEET 66 OF 96