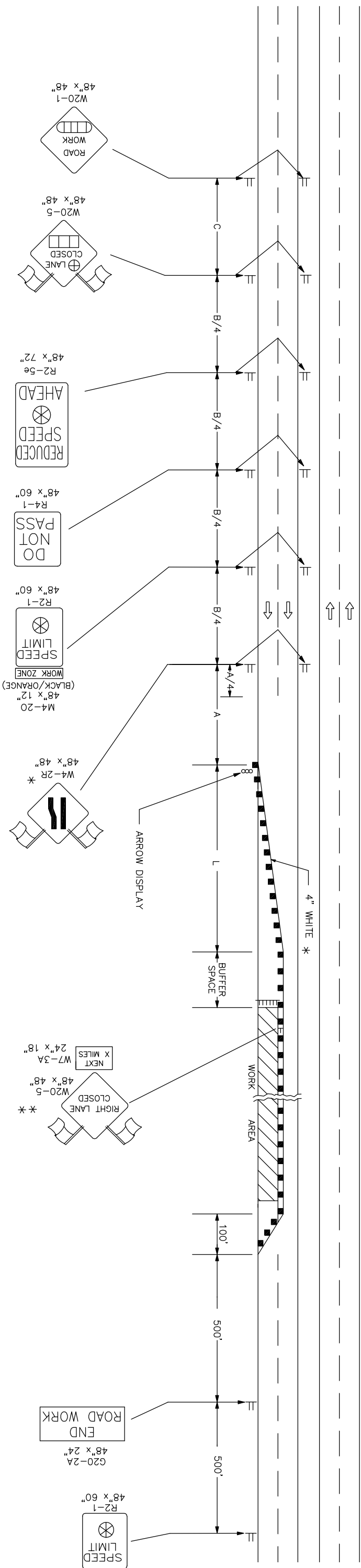


STATE	PROJECT NO.	YEAR	SHEET NO.	TOTAL SHEETS
KANSAS	87 N-0190-01	2005	71	96

REFER TO STD. TET710 FOR ADDITIONAL INFORMATION ON TRAFFIC CONTROL SIGNS AND SIGN SPACING.  
REFER TO STD. TET702 FOR INFORMATION ON TAPERS AND CHANNELIZING DEVICES.  
REFER TO STD. TET700 FOR LENGTH OF BUFFER SPACE.



LEFT-SIDE SIGNS SHALL BE OMITTED FOR A FOUR-LANE UNDIVIDED HIGHWAY.

\* FOR LEFT LANE CLOSURES USE W4-2L AND YELLOW EDGE LINE ALONG CHANNELIZING DEVICES.

\*\* THE W20-5 (RIGHT LANE CLOSED) AND W7-3A (NEXT X MILES) SIGNS SHOULD BE PLACED AT 2 MILE INCREMENTS ON A PROJECT OF 4 MILES OR LONGER.

A TRAILER OR TRUCK WITH AN ARROW DISPLAY MAY BE USED DURING DAYTIME IN PLACE OF THE ARROW DISPLAY. THE TRUCK SHOULD BE LOCATED BETWEEN THE BUFFER SPACE AND THE WORK AREA.

- Channelizing Devices
- III Type III Barricades
- ⊗ AHEAD, 1500 FT Or 1 MILE
- ⊗ Speed To Be Determined By The Engineer
- ⊗ AHEAD, 1000 FT, 1500 FT Or 1/2MILE
- ⊕ RIGHT OR LEFT
- X Length To The Nearest Whole Mile

J:\C:\M\04178\dwg\DETAILS\TE744.dwg 7/11/2005 4:20:22 PM CST

NO.	DATE	REVISIONS	BY	APP'D
3		CHANGED BORDER		
2	11-19-03		BH.	S.A.B.
1	9-26-02	REMOVED G20-1 SIGNS, ADDED W20-5 AND W7-3A	M.H.	S.A.B.

KANSAS DEPARTMENT OF TRANSPORTATION  
TYPICAL TRAFFIC CONTROL  
FOUR-LANE HIGHWAY  
ONE LANE CLOSED

TE744	11-28-03	APP'D Michael P. McKernan	TRACED	9/1/00
DESIGNED L.F.R.	DETAILED B.A.H.	QUANTITIES	TRACE CK.	
DESIGN CK.	DETAIL CK.	QUAN. CK.		71