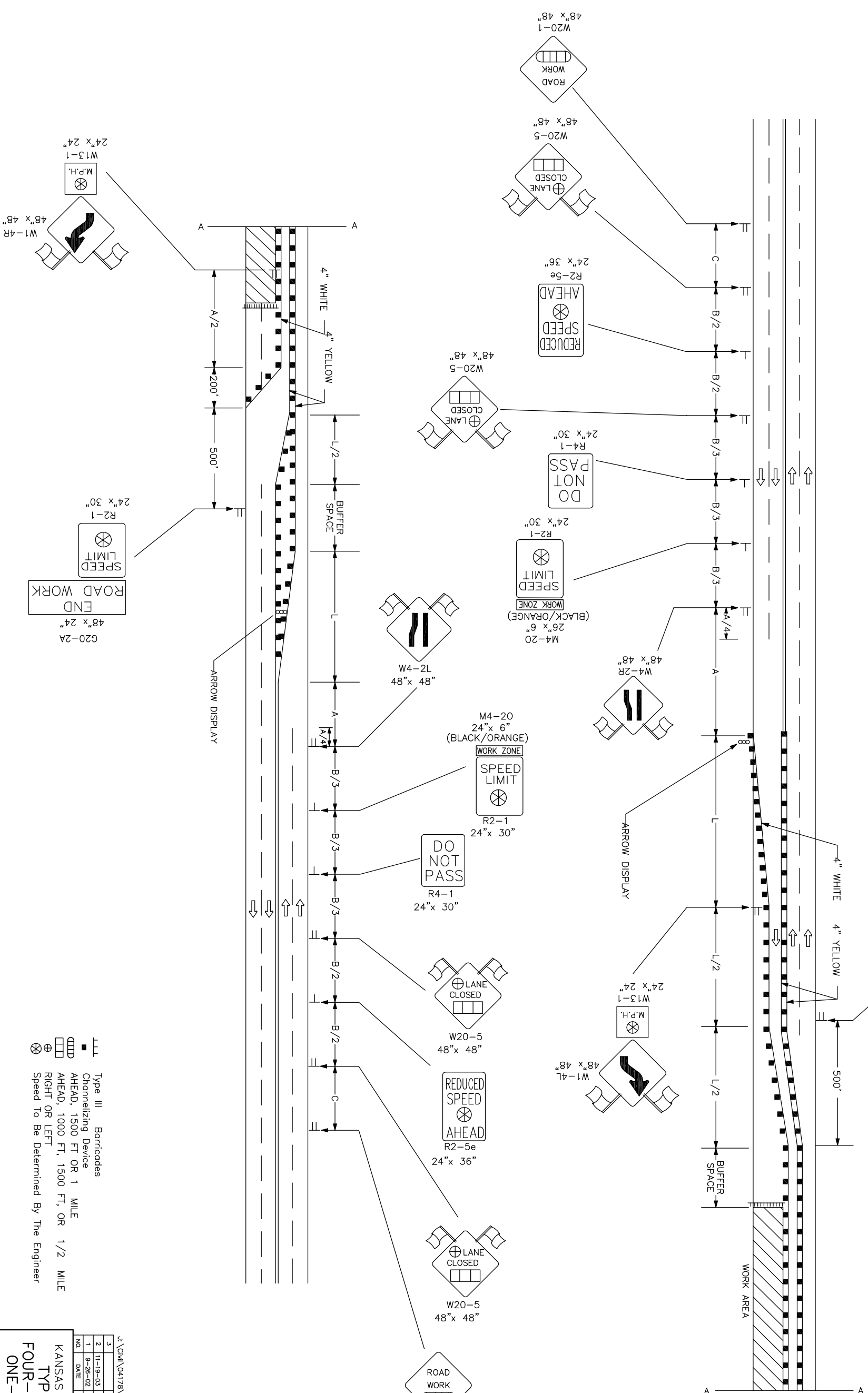


REFER TO STD. TET10 FOR ADDITIONAL INFORMATION ON TRAFFIC CONTROL SIGNS AND SIGN SPACING.
 REFER TO STD. TET02 FOR INFORMATION ON TAPERS AND CHANNELIZING DEVICES.
 REFER TO STD. TET00 FOR LENGTH OF BUFFER SPACE.



STATE	PROJECT NO.	YEAR	SHEET NO.	TOTAL SHEETS
KANSAS	87 N-0190-01	2005	72	96

NO.	DATE	REVISIONS	B.H.	S.A.B.
3				
2	11-19-03	CHANGED BORDER		
1	9-26-02	REMOVED G20-1 SIGNS		

KANSAS DEPARTMENT OF TRANSPORTATION
 TYPICAL TRAFFIC CONTROL
 FOUR-LANE UNDIVIDED HIGHWAY
 ONE-HALF ROADWAY CLOSED

TE748
 9/1/00

DESIGNED BY: J.P.D. Michael P. McKernan
 CHECKED BY: J.P.D. Michael P. McKernan
 DATE: 11-26-03
 DRAWN BY: J.P.D. Michael P. McKernan
 DATE: 11-26-03

NO.	DATE	REVISIONS	B.H.	S.A.B.
3				
2	11-19-03	CHANGED BORDER		
1	9-26-02	REMOVED G20-1 SIGNS		