

PLAN AND PROFILE OF PROPOSED

# CENTRAL AND OLIVER INTERSECTION

CITY OF WICHITA  
SEDGWICK COUNTY, KANSAS

PROJECT NO. 472-84362

JIM ARMOUR, P.E. - CITY ENGINEER

PAVING O.C.A. NO. 706950

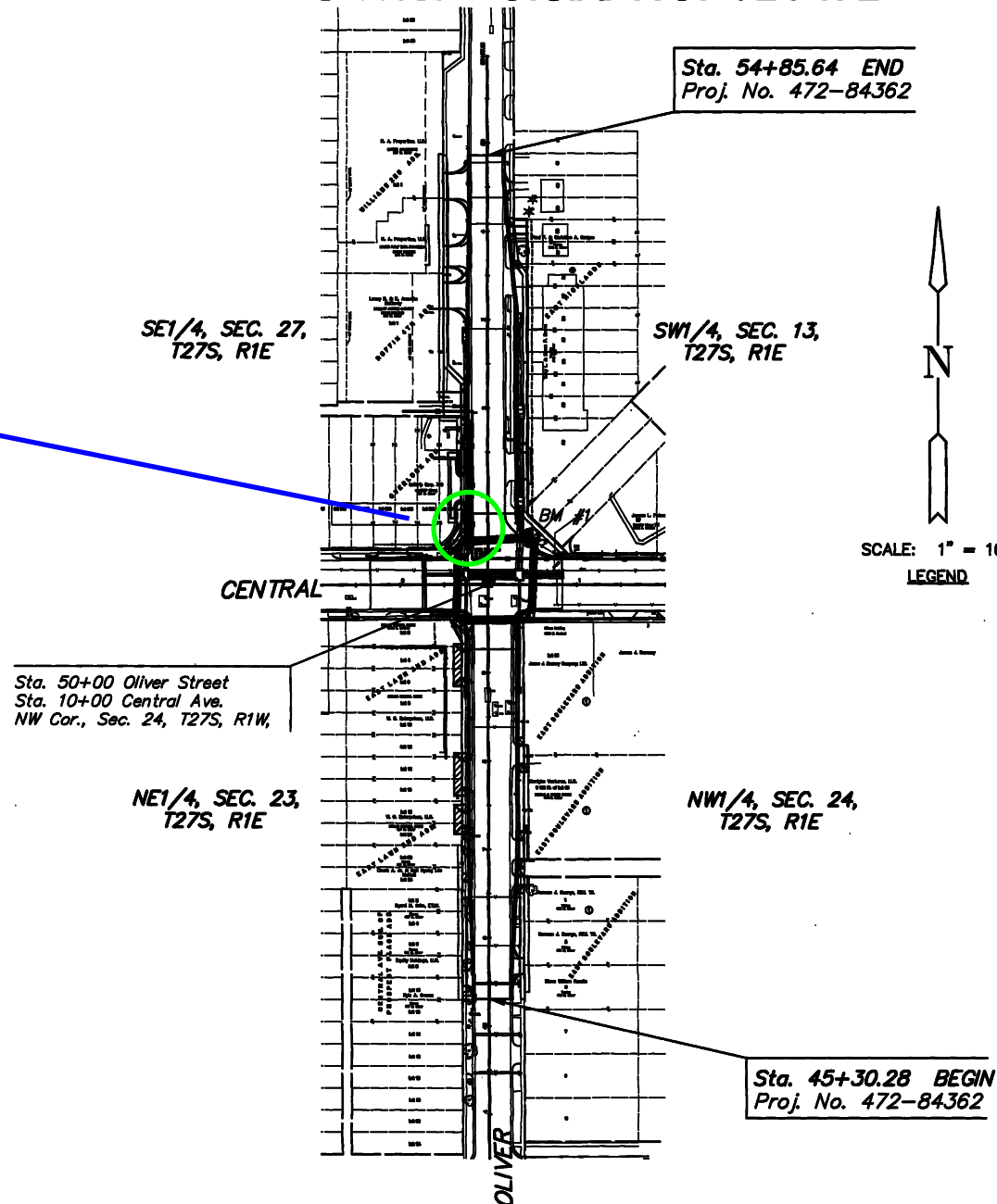
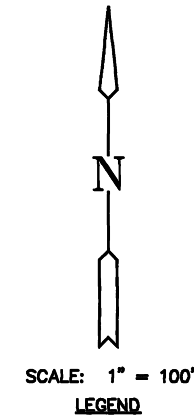
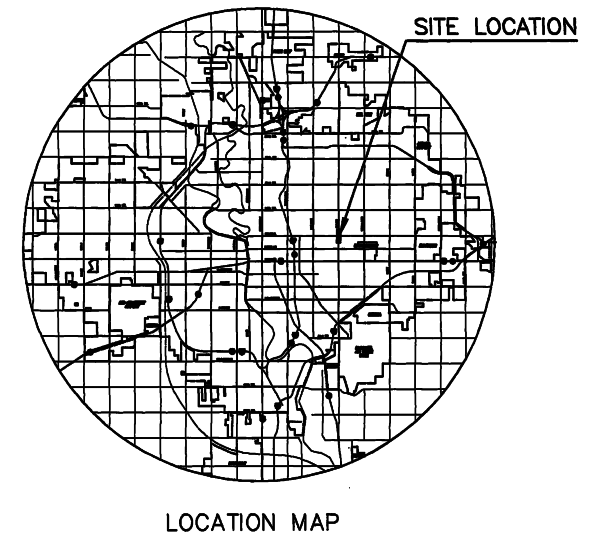
WATER O.C.A. NO. 636184

SANITARY SEWER O.C.A. NO. 620472

## INDEX TO DRAWINGS

SHEET NO	DESCRIPTION
1	TITLE SHEET
2	GENERAL NOTES
3	TYPICAL SECTIONS
4-5	PLAN SHEETS
6	PAVING BUBBLE MAP
7-9	STORM SEWER PLAN AND PROFILE
10	STORM SEWER BUBBLE MAP
11	INTERSECTION DETAIL
12-17	PAVING DETAILS
18-26	STORM SEWER DETAILS
27	MISCELLANEOUS DETAILS
28	SANITARY SEWER PLAN AND PROFILE
29	SANITARY SEWER BUBBLE MAP
30-32	WATER PLAN AND PROFILE
33	WATER BUBBLE MAP
34-36	WATER DETAILS
37-38	SUMMARY OF QUANTITIES
39-44	EROSION CONTROL BMP SHEETS
45-46	TRAFFIC SIGNAL PLAN
47-49	TRAFFIC SIGNAL DETAILS
50-51	PAVEMENT MARKING AND SIGNING PLAN
52	SIGNING DETAILS
53	CONSTRUCTION SEQUENCE SUMMARY
54-58	TRAFFIC CONTROL PLAN
59-61	TRAFFIC CONTROL DETAILS
62-68	CROSS SECTIONS

SS modifications also noted in  
Book C-1, page C-41



### BENCHMARK

BM #1 City of Wichita benchmark disc in concrete base of traffic signal, 53' north and 48' east of Section Corner at Central and Oliver.  
Elev. = 178.10

Dondlinger & Sons Construction Co.,  
Inc. - Contractor  
Coykendall, City - Inspector  
Released 10/9/07  
Per Plan  
.pdf by JDL 4/30/08

J:\CIVIL\05709\dwg\title\05709ET.DWG 01/29/2007 10:59:21 AM CST

<p><b>MKEC</b> ENGINEERING CONSULTANTS 411 N. WEBB ROAD WICHITA, KS. 67206 316 - 684 - 9600</p>	<b>CENTRAL AND OLIVER INTERSECTION</b>		
	PROJECT NAME		
<b>TITLE SHEET</b>			
SHEET TITLE			
JRA DESIGN BY.	JSB DRAWN BY.	JRA CHECKED BY.	
JAN. 2007 DATE	05709 JOB NO.	1 / 68 SHEET/OF	