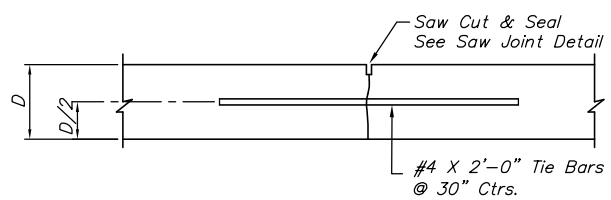
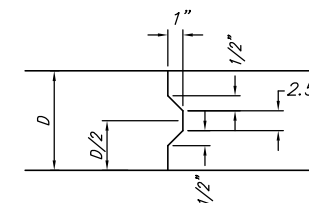


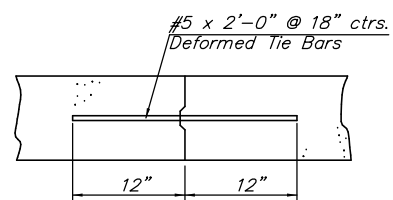
**ISOLATION JOINT (I.J.)**  
(At Structures)



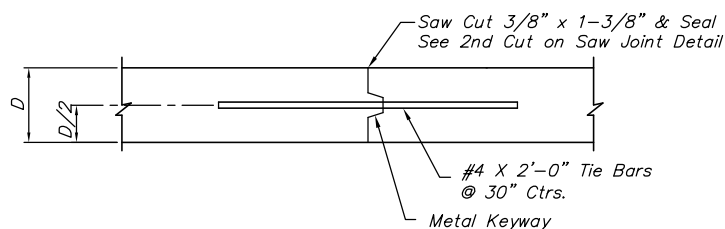
**LONGITUDINAL JOINT DETAIL (L.J.)**



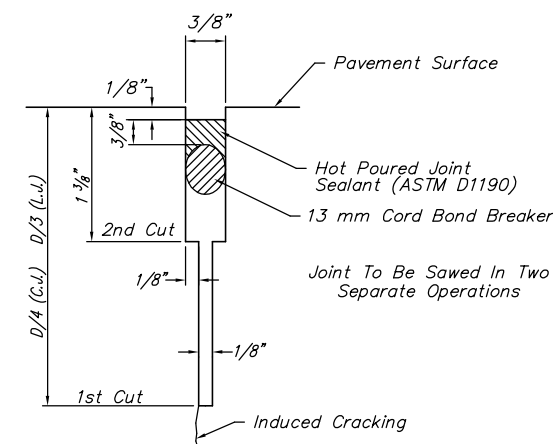
**KEYWAY DETAIL**



**TIED CONSTRUCTION (T.J.) AND  
CONTRACTION (C.J.) JOINT DETAIL**

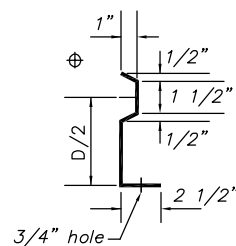


**OPTIONAL LONGITUDINAL JOINT DETAIL (L.J.)**



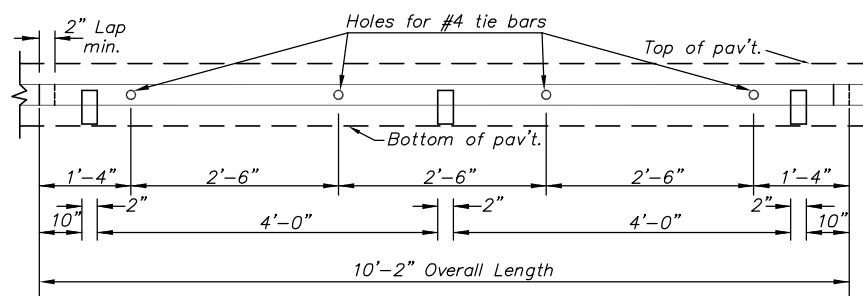
**SAW JOINT DETAIL**

Note: Contraction joints will be constructed at the planned location or as directed by the Engineer. When necessary to interrupt continuous placement for a substantial length of time or at the end of a day's pour, the Contractor has the option of ending placement at a contraction joint or with a construction joint located a minimum of five (5) feet from a contraction joint. Either joint type may be constructed by placing a header at the end of the pour or by paving past the joint location, sawing the joint after the concrete has hardened, and drilling holes for the tie bars and securing into the concrete with epoxy or cement grout.



**SECTION OF RECESSED  
FORM LEG**

⊕ Snap-in leg or other approved designs may be used in lieu of welded leg.



**METAL STRIP FOR LONGITUDINAL CONSTRUCTION JOINT**

To be used only against forms. Shall not extend through contraction or expansion joints. Other types of construction shall be permitted with the approval of the engineer.

J:\Civil\05709\dwg\details\05709dd1.dwg 01/29/2007 10:55:25 AM CST



**CENTRAL AND OLIVER INTERSECTION**  
PROJECT NAME

**CONCRETE PAVEMENT DETAILS**  
SHEET TITLE

JRA DESIGN BY.	JSB DRAWN BY.	JRA CHECKED BY.
JAN. 2007 DATE	-5709 JOB NO.	14 / 68 SHEET/OF