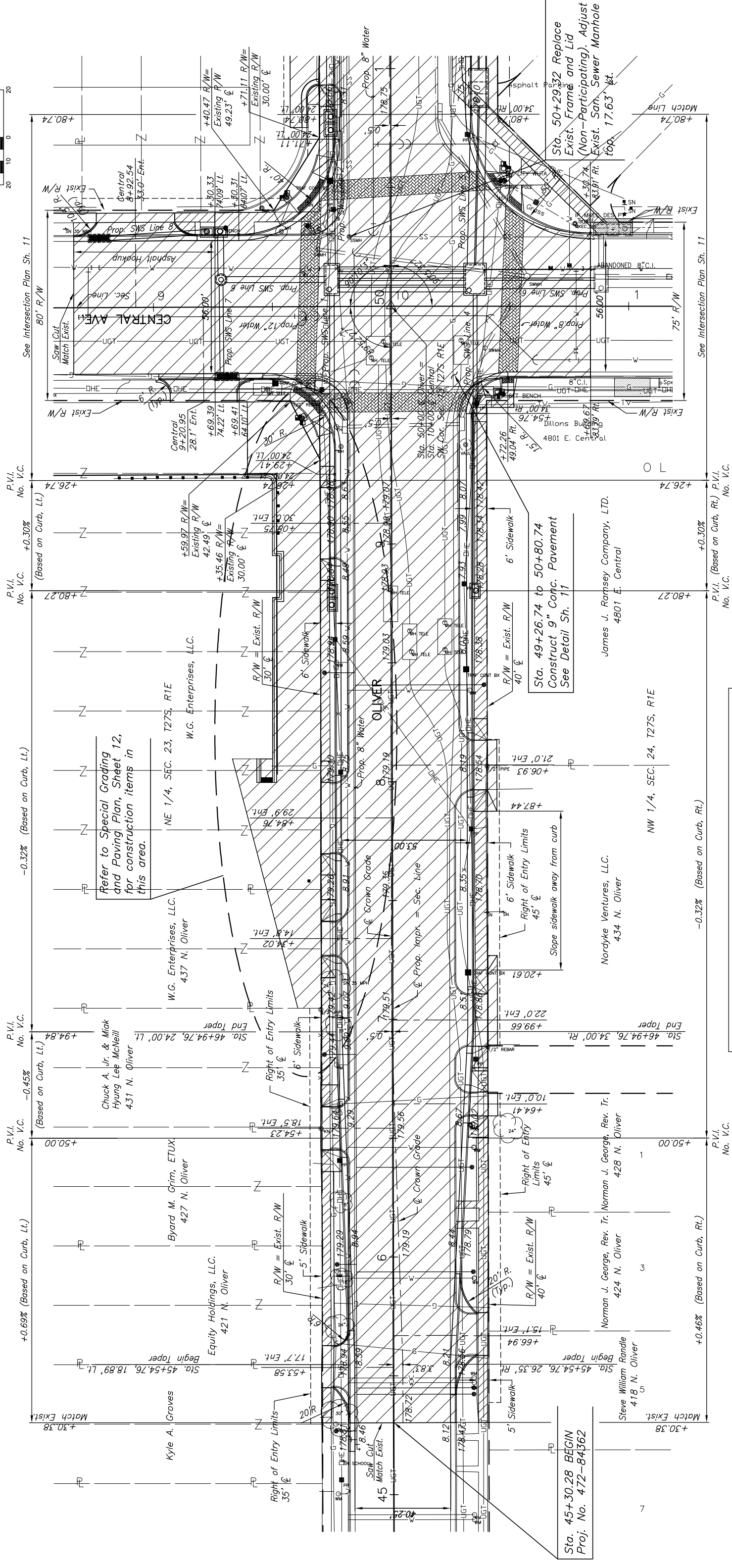
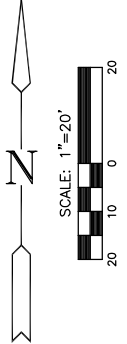


P.I. Southwest Corner Sec. 13, T27S, R1E
 1. Found Iron Pipe in Thimble
 2. 0.00' Rt., @ Sta. 50+00.00
 3. N 0.00, E 1000.00
 4. No references set



CENTRAL AND OLIVER INTERSECTION
 STREET IMPROVEMENT PLAN
 STA 45+30.28 TO STA 50+80.74

MKEC
 ENGINEERING
 CONSULTANTS
 411 N. WEBB ROAD
 WICHITA, KS. 67203
 316-694-9999

DESIGN BY: JRA
 DRAWN BY: USB
 CHECKED BY: JRA
 DATE: JAN. 2007
 JOB NO.: 05709
 SHEET OF: 4 / 68

LEGEND

Pavement/Sidewalk Removal

UTILITY ADJUSTMENT TABLE

STATION	OFFSET	EXISTING ELEVATION	PROPOSED ELEVATION	REMARKS
48+54.66	8.26 Rt.	178.56	178.76	Adjust Tel. Manhole
48+55.57	22.29 Rt.	178.10	178.33	Adjust Tel. Manhole
48+63.40	7.48 Rt.	178.60	178.73	Adjust Tel. Manhole
48+66.82	22.28 Rt.	178.05	178.29	Adjust Tel. Manhole
48+80.69	0.52 Lt.	178.70	178.93	Adjust Tel. Manhole
49+65.28	52.16 Lt.	179.43	179.53	Adjust Tel. Manhole
49+78.42	8.43 Lt.	178.40	179.09	Adjust Tel. Manhole
49+85.23	3.30 Lt.	178.35	178.98	Adjust Tel. Manhole
49+85.60	29.37 Rt.	178.03	178.33	Adjust Tel. Manhole
49+85.29	78.82 Rt.	177.58	177.64	Adjust Water Valve
50+29.32	17.63 Lt.	178.46	178.89	Adjust San. Sewer Manhole

UTILITIES

COX COMMUNICATIONS (CABLE) 262-0661
 WESTAR (ELECTRIC) 261-6512
 KANSAS GAS SERVICE (GAS) 832-3101
 SBC (TELEPHONE) 800-870-8390
 CITY OF WICHITA WATER & SEWER 262-6000
 AQUILA (GAS) 946-0096

J:\Civil\05709\dwg\pav\05709PL1.dwg 01/29/2007 10:58:02 AM CST