

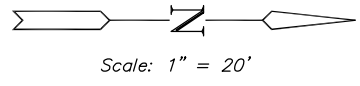
Sta. 1+33.91 Line 1=
 Sta. 48+77.44, 24.9' Lt.
 Const. Curb Inlet (Type 1)
 L=11'-4", W=4'-4"
 Inlet Top = 178.84

Sta. 0+00.00, Line 1=
 Sta. 0+00.00, Line 2=
 Sta. 0+13.34, Line 6 =
 Sta. 50+11.32, 24.96' Lt.
 Const. Reinf. Conc. Manhole
 L=13'-6", W=6'-6"
 M.H. Top = 179.21

NOTE: Contractor shall contact Westar to coordinate Storm Sewer Installation near existing Westar poles. Westar will secure poles during Construction.

Sta. 0+65.86, Line 2=
 Sta. 50+77.18, 25.50' Lt.
 Const. Curb Inlet (Type 1)
 L=11'-4", W=5'-4"
 Inlet Top = 178.65

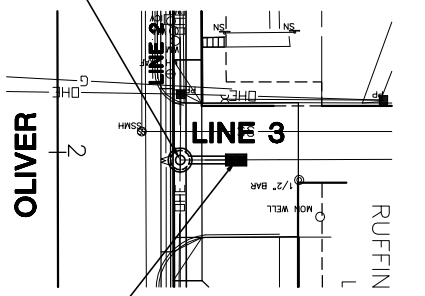
NOTE: Storm Sewer Installation will be required near existing AT&T facilities. AT&T facilities are shown based on field locates provided by AT&T. Confirm location prior to Storm Sewer Installation.



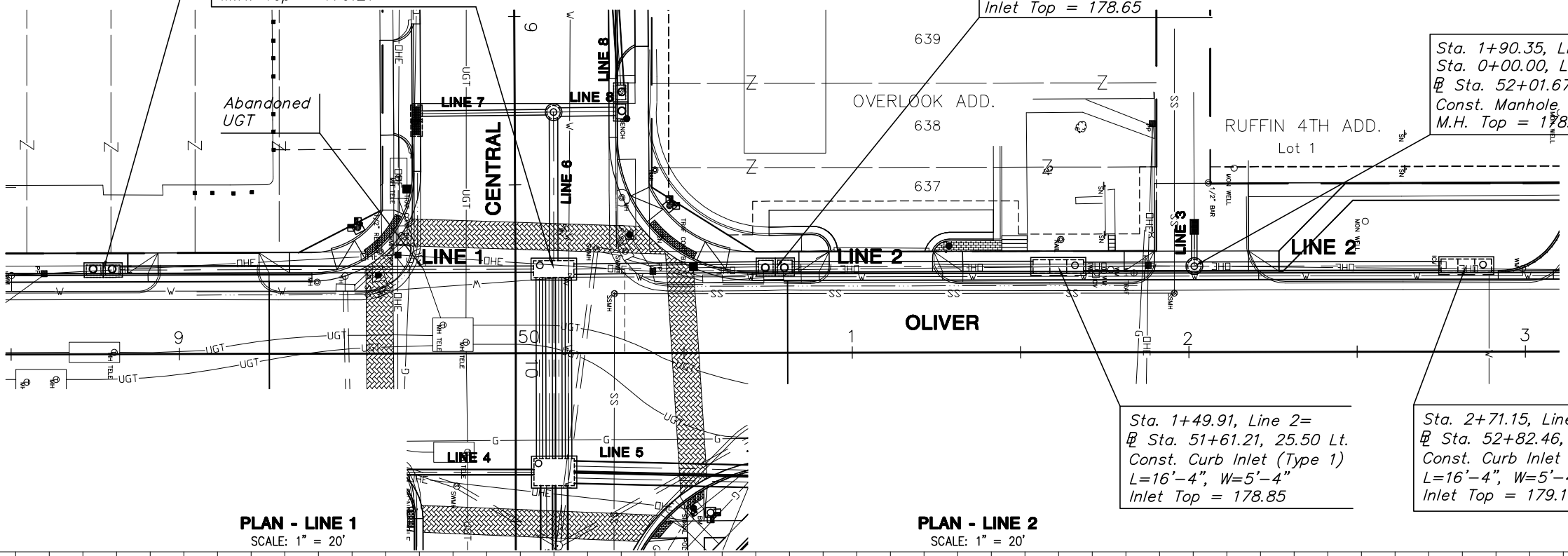
CENTRAL AND OLIVER INTERSECTION
 STORM SEWER PLANS
 LINE 1, LINE 2, & LINE 3

Scale: 1" = 20'

Sta. 0+00.00, Line 3=
 Sta. 1+90.35, Line 2=
 Sta. 52+01.67, 25.50' Lt.
 M.H. Top = 178.62



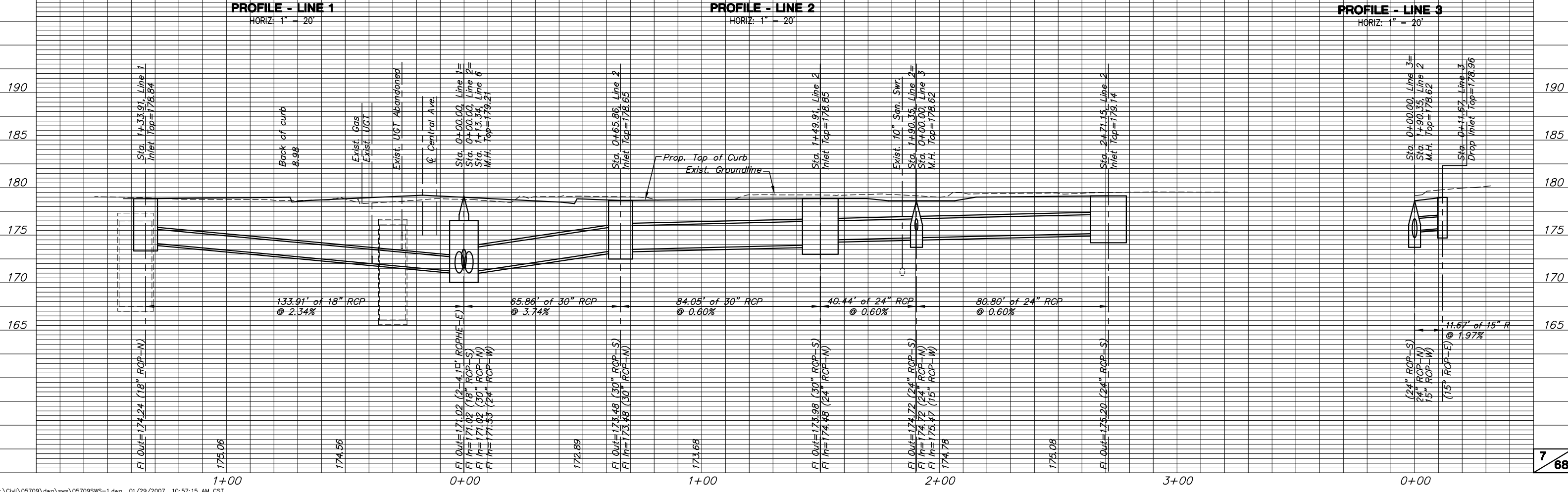
Sta. 0+11.67, Line 3=
 Sta. 52+01.67, 37.16' Lt.
 Const. Drop Inlet
 Inlet Top = 178.96



PLAN - LINE 1
 SCALE: 1" = 20'

PLAN - LINE 2
 SCALE: 1" = 20'

PLAN - LINE 3
 SCALE: 1" = 20'



PROFILE - LINE 1
 HORIZ. 1" = 20'

PROFILE - LINE 2
 HORIZ. 1" = 20'

PROFILE - LINE 3
 HORIZ. 1" = 20'