

Sta. 0+00.00, Line 6=
@ Sta. 50+11.31, 88.4' Rt.
Connect to Exist. Reinf.
Conc. Manhole
L=11'-0", W=6'-0"

Sta. 0+53.04, Line 6=
Sta. 0+00.00, Line 4=
Sta. 0+00.00, Line 5=
@ Sta. 50+11.32, 35.34' Rt.
M.H. Top = 178.37

Sta. 1+13.34, Line 6=
Sta. 0+00.00, Line 1=
Sta. 0+00.00, Line 2=
@ Sta. 50+11.32, 24.96' Lt.
M.H. Top = 179.21

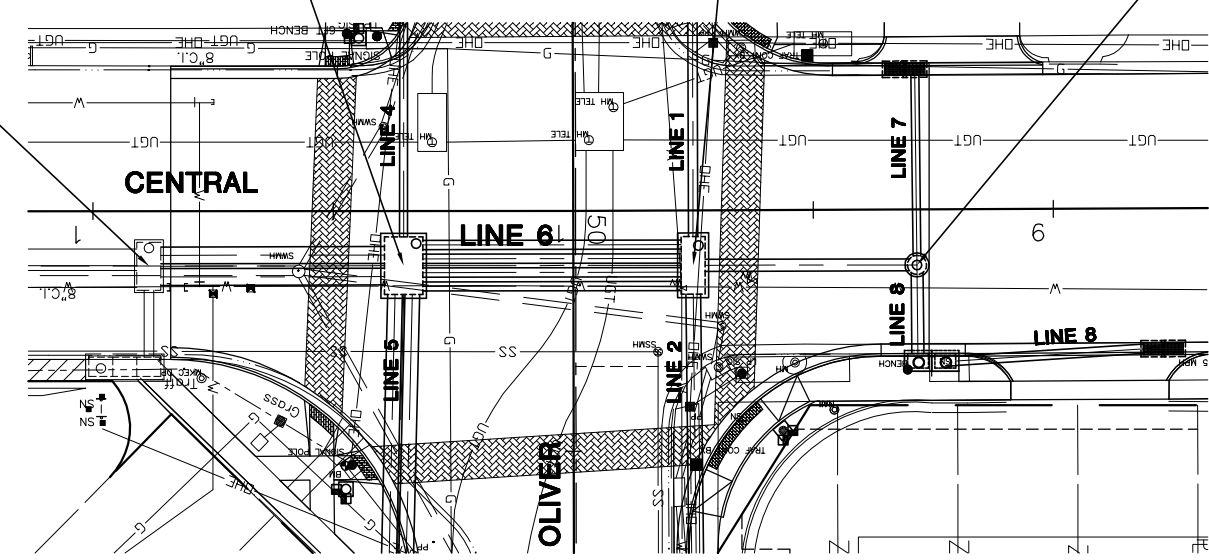
Sta. 1+59.97, Line 6=
Sta. 0+00.00, Line 7=
Sta. 0+00.00, Line 8=
@ Sta. 50+11.33, 71.58' Lt.
Const. Manhole (D=4')
M.H. Top = 179.76

Sta. 0+00.00, Line 7=
Sta. 0+00.00, Line 8=
Sta. 1+59.97, Line 6=
@ Sta. 50+11.33, 71.58' Lt.
M.H. Top = 179.76

Sta. 0+40.74, Line 7=
@ Sta. 49+70.65, 69.13' Lt.
Install Double Grate Gutter Inlet
Grate Top = 179.21 (FL)

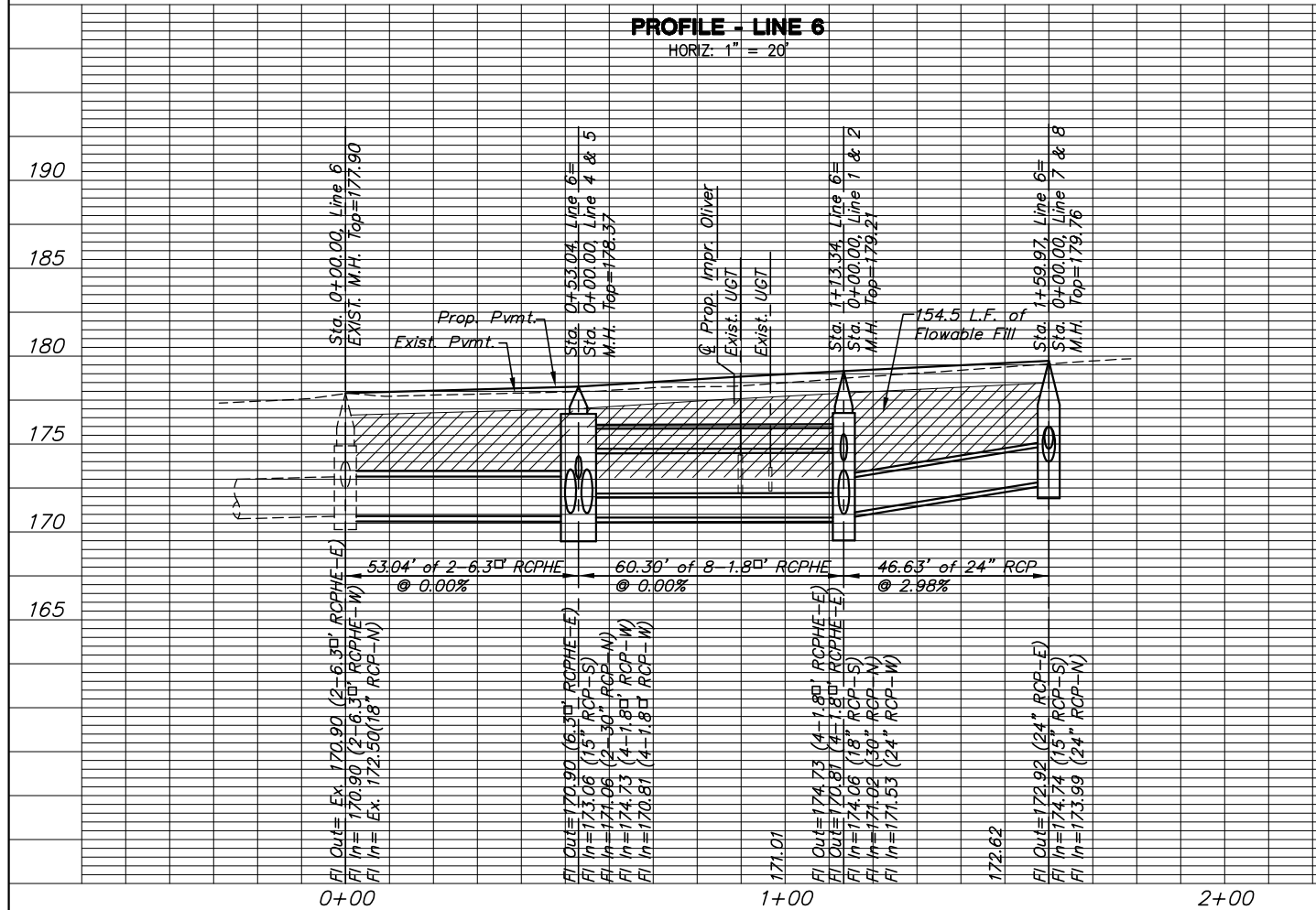
Sta. 0+71.16, Line 8=
@ Sta. 50+28.83, 122.85' Lt.
Install Double Grate Gutter Inlet
Grate Top = 180.05 (FL)

Sta. 0+22.82, Line 8=
@ Sta. 50+31.32, 74.59' Lt.
Const. Curb Inlet (Type 1)
L=11'-4", W=4'-4"
Inlet Top = 179.77



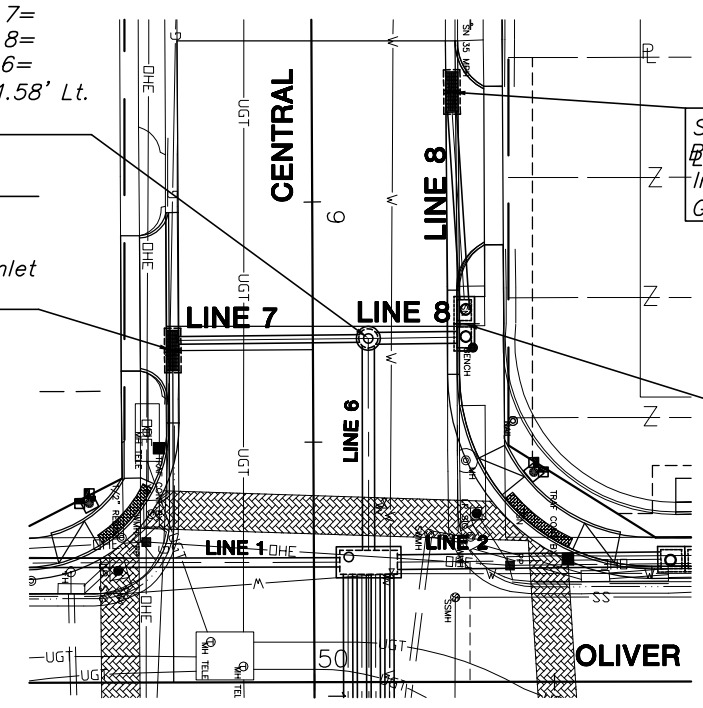
PLAN - LINE 6
SCALE: 1" = 20'

PROFILE - LINE 6
HORIZ: 1" = 20'



NOTE: Contractor shall contact Westar to coordinate Storm Sewer Installation near existing Westar poles. Westar will secure poles during Construction.

NOTE: Storm Sewer Installation will be required near existing AT&T facilities. AT&T facilities are shown based on field locates provided by AT&T. Confirm location prior to Storm Sewer Installation.



PLAN - LINE 7
SCALE: 1" = 20'

PROFILE - LINE 7
HORIZ: 1" = 20'



PLAN - LINE 8
SCALE: 1" = 20'

PROFILE - LINE 8
HORIZ: 1" = 20'

